

MODEL NUMBER
ADT-2805-SF-BMF-02

NOTES:

1.0 MATERIAL:

- 1.1 HOUSING, NUT AND WASHER: STAINLESS STEEL PER ASTM-A582, TYPE 303.
- 1.2 DIELECTRIC: PTFE FLUOROCARBON PER ASTM-D1710.
- 1.3 CENTER CONTACT AND EXTENSION: BERYLLIUM COPPER ROD ALLOY C172, PER ASTM-B196.

2.0 PLATING:

- 2.1 HOUSING, NUT AND WASHER: PASSIVATED PER MIL-F-14072 AND SAE AMS QQ-P-35.
- 2.2 CENTER CONTACT AND EXTENSION: GOLD PER MIL-PRF-39012.

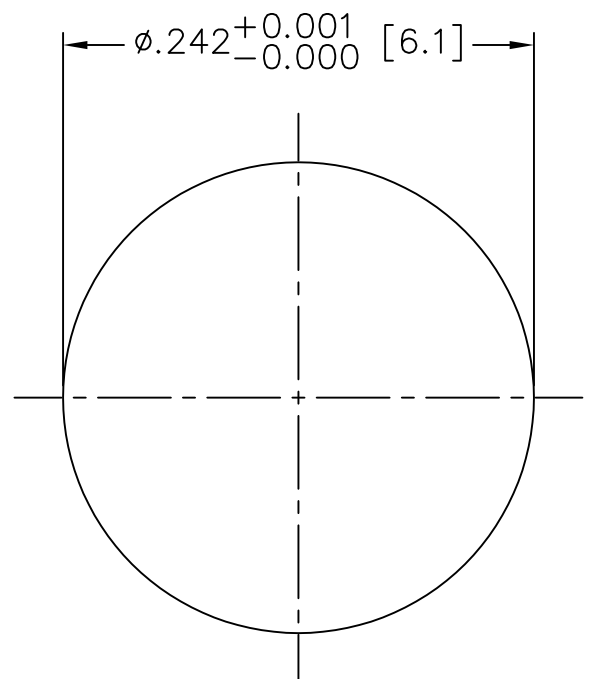
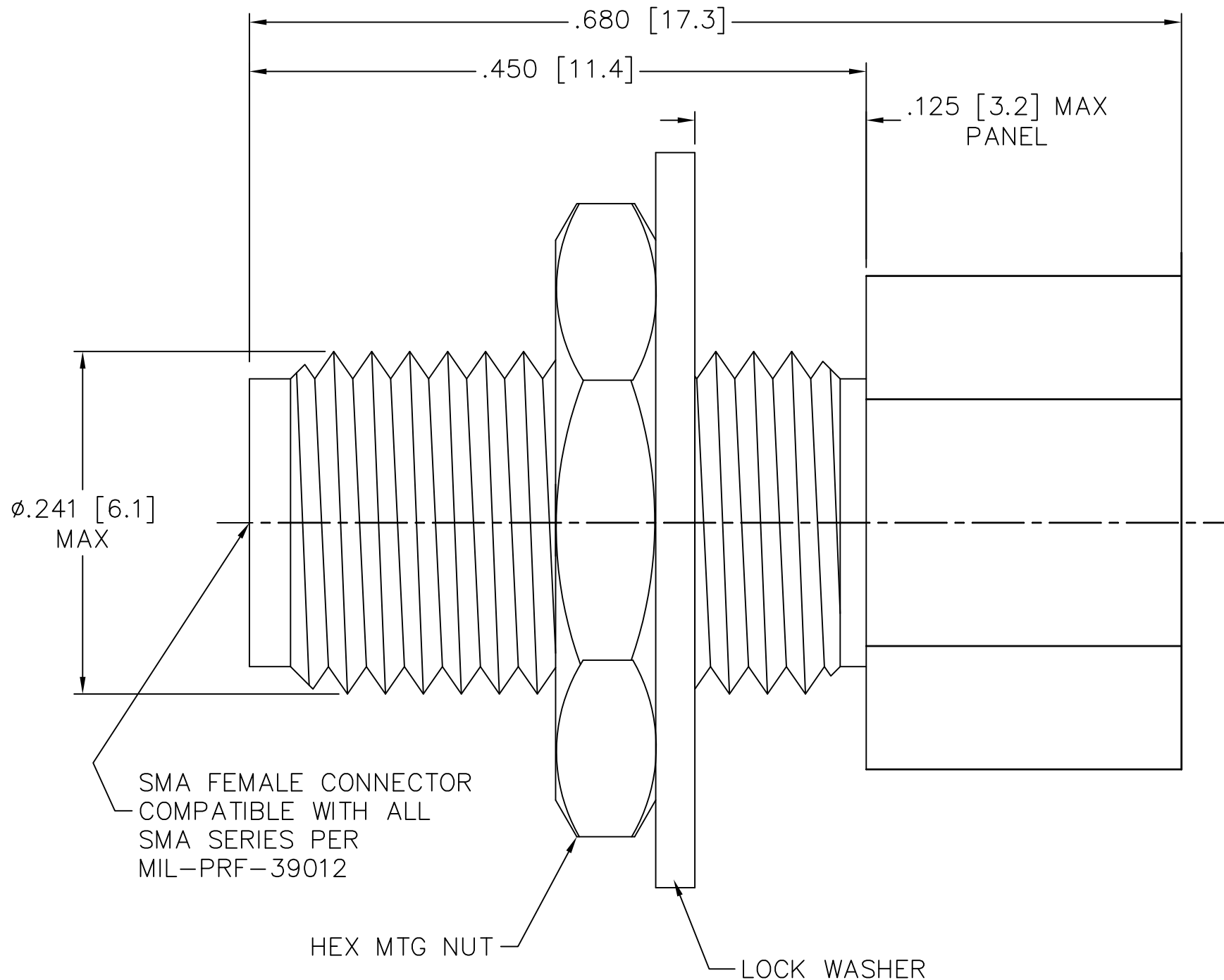
3.0 MECHANICAL:

- 3.1 INTERFACE PER MIL-STD-348A.
- 3.2 CENTER CONTACT CAPTURED IN ACCORDANCE WITH MIL-PRF-39012.

4.0 ELECTRICAL:

- 4.1 FREQUENCY RANGE: DC to 18 GHz
- 4.2 MAX V.S.W.R.: 1.05 + .005f(GHz)

5.0 DIMENSIONS IN BRACKETS ARE IN MILLIMETERS.

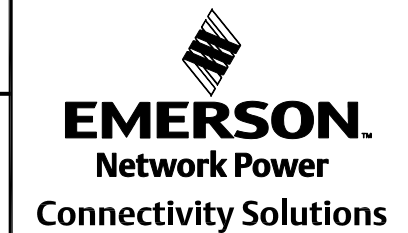


RECOMMENDED MOUNTING HOLE

NOTICE: The information contained in this drawing is proprietary and must not be used without the permission of Emerson Network Power.

UNLESS OTHERWISE NOTED DIMENSIONS ARE IN INCHES AND TOLERANCES ARE:
 3 PLACE DECIMALS ±.005
 2 PLACE DECIMALS ±.02
 FRACTIONS ±1/64
 PARALLELITY: T.I.R. _____
 FLATNESS: T.I.R. _____
 CONCENTRICITY: T.I.R. _____
 ANGLES AND PERPENDICULARITY: ±1°

CAGE CODE
34078 *MIDWEST MICROWAVE*



TITLE
 SMA FEMALE TO BMA FEMALE
 OUTLINE DRAWING

DRAWN/DATE
 S.ORLOV
 12/20/04
 CHECKED/DATE
 G.HOUGHTON
 12/22/04
 APPROVED/DATE
 G.HOUGHTON
 12/22/04

DRAWING NUMBER
 ADT-2805-SF-BMF-02-01
 SCALE: 10=1
 SHEET 1 of 1

DATE	12/22/94
DESCRIPTION	RELEASED
REV.	1

REV. -