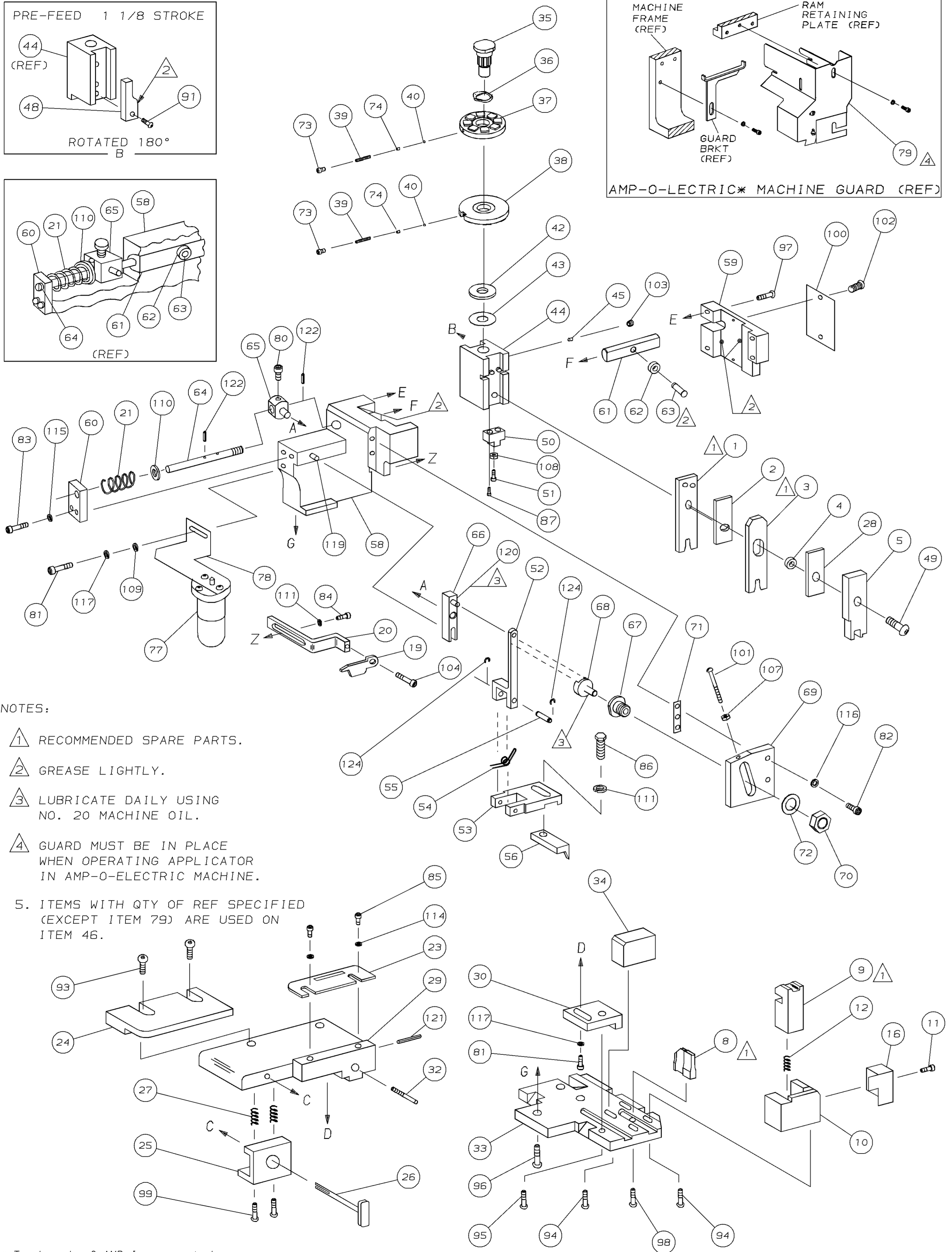
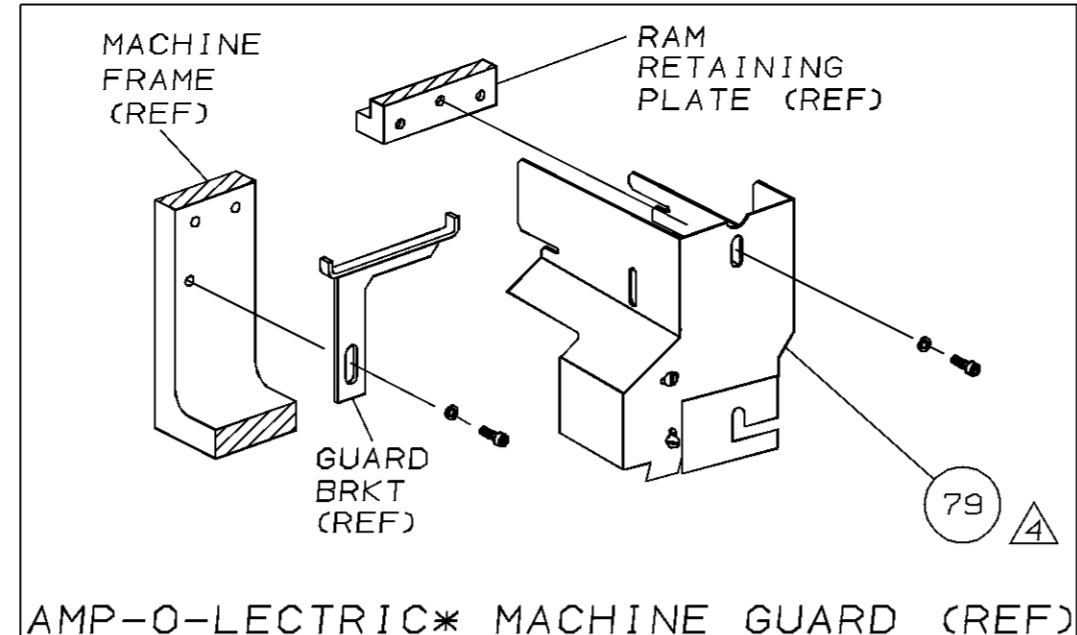
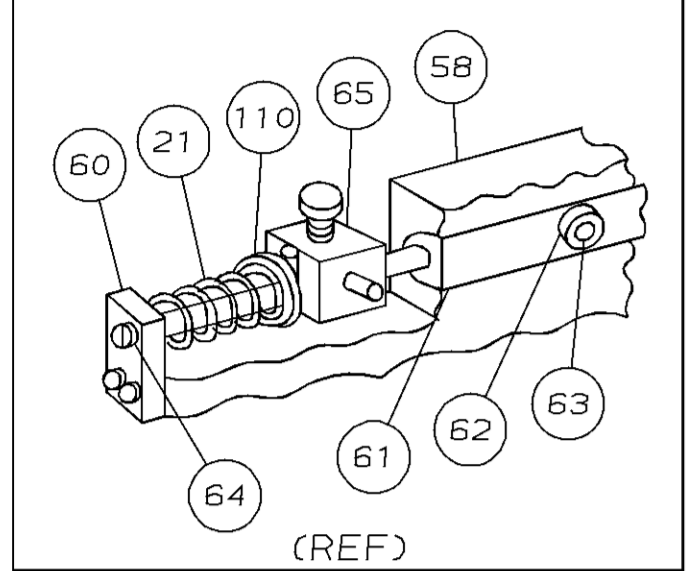
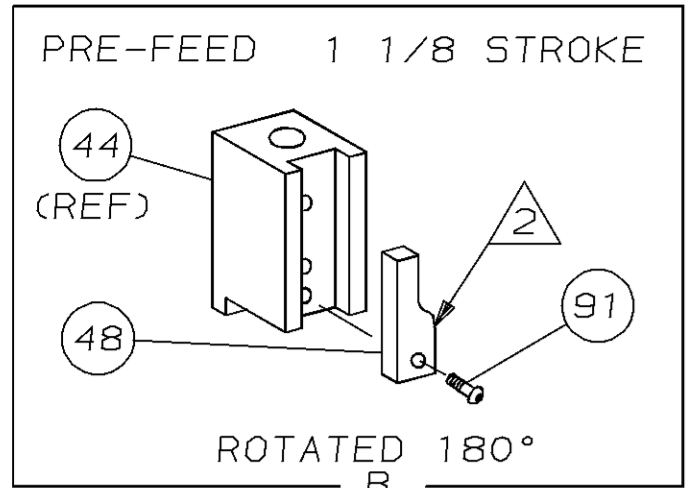


THIS DRAWING IS A CONTROLLED DOCUMENT FOR AMP INCORPORATED. IT IS SUBJECT TO CHANGE AND THE CONTROLLING ENGINEERING ORGANIZATION SHOULD BE CONTACTED FOR THE LATEST REVISION.



- NOTES:
- 1 RECOMMENDED SPARE PARTS.
 - 2 GREASE LIGHTLY.
 - 3 LUBRICATE DAILY USING NO. 20 MACHINE OIL.
 - 4 GUARD MUST BE IN PLACE WHEN OPERATING APPLICATOR IN AMP-O-ELECTRIC MACHINE.
5. ITEMS WITH QTY OF REF SPECIFIED (EXCEPT ITEM 79) ARE USED ON ITEM 46.

QTY	PART NO	DESCRIPTION	ITEM NO
2	21045-3	RING, RET "C" (.187ø) FEED FINGER PIN	124
1	454220-8	CAP, HOUSING	59
2	5-21028-1	PIN, SLT SPR (.125øx.50) ADJ ROD	123
1	454485-7	HOUSING	58
1	4-21028-0	PIN, SLT SPR (.093øx.75) ST GUIDE PL	122
1	690542-2	PAWL, FEED	56
1	1-21030-1	PIN, DOWEL (.187øx.50) LEVER	120
1	240624-1	PIN, FEED FINGER	55
1	1-21030-6	PIN, DOWEL (.187øx1.25) HOUSING	119
1	691499-1	SPRING, FEED FINGER	54
1	690541-1	FINGER, FEED	53
2	21024-5	WASHER, LOCK (NO. 10) ADJ BLOCK	117
1	455679-1	LEVER, TERMINAL FEED ARM	52
2	21024-5	WASHER, LOCK (NO. 10) ADJ PLATE	116
1	811242-2	BUMPER, HOLDDOWN	51
2	21024-5	WASHER, LOCK (NO. 10) FEED GUIDE ROD	115
1	844419-1	SPACER, TONKER	50
2	21024-2	WASHER, LOCK (NO. 4) FRONT STRIP GUIDE	114
1	7-21002-9	BOLT, CRIMPER (5/16-24x1.00)	49
1	690602-5	CAM, PRE-FEED 1 1/8 STROKE	48
			47
			46
4	21024-4	WASHER, LOCK (NO. 8) STRIPPER	111
1	690191-1	PLUG, NYLON	45
1	21899-4	WASHER, FLAT (5/16 DIA) SCREW ADJ	110
1	853076-1	RAM	44
1	21899-2	WASHER, FLAT (NO. 10) LUB ASSY	109
1	690125-1	WASHER, LAMINATED	43
1	21018-5	NUT, HEX (NO. 6) HOLDDOWN	108
1	690124-1	WASHER, RAM	42
			41
			40
1	456567-1	SCR, SHLD (.188øx.125) STRIPPER	105
1	23241-6	BALL, STEEL	40
1	21009-2	SCR, SKT SET (1/4-20x.25 LOC-WEL) RAM	104
2	690170-1	SPRING, COMPRESSION	39
2	21017-2	SCR, DRIVE (#2x.19) ID PLATE	103
1	690142-1	DISC, INSULATION	38
1	6-23715-5	SCR, PAN HD (6-32x1.50) FEED ADJ	102
1	5-690692-2	DISC, WIRE	37
1	22480-5	WASHER, SPRING	36
1	461264-1	PLATE, IDENTIFICATION	100
2	690212-1	POST, RAM	35
2	2-21002-9	SCR, BHC (10-32x.75) DRAG	99
1	690786-1	SUPPORT, TERMINAL	34
1	22733-8	SCR, BHC (8-32x.38 LOC-WEL) ANVIL	98
4	455675-1	PLATE, BASE	33
3	2-21002-9	SCR, BHC (10-32x.75) CAP	97
1	690432-3	SCREW, ADJUSTMENT	32
1	2-22733-8	SCR, BHC (1/4-20x.62) HOUSING	96
1	455689-1	BLOCK, STRIP GUIDE ADJ	30
1	2-21002-7	SCR, BHC (10-32x.50) SG ADJ BLOCK	95
2	2-455671-6	PLATE, STRIP GUIDE	29
2	455888-7	SPACER, FRONT SHEAR DEP	28
1	1-22284-0	SPRING, DRAG	27
1	690546-1	LEVER, DRAG RELEASE	26
1	240792-1	DRAG, STOCK	25
1	9-690504-5	GUIDE, STRIP (REAR)	24
1	690438-1	GUIDE, STRIP (FRONT)	23
2	1-21000-6	SCR, SET CAP 4-40 X .62	87
1	4-22284-9	SPRING, FEED RETURN	22
1	2-22603-0	SCR, HEX HEAD (8-32x.31) FEED FINGER	86
2	1-21000-3	SCR, SKT CAP (4-40x.25) F STRIP GUIDE	85
1	458950-1	ARM, STRIPPER	20
1	2-21000-7	SCR, SKT CAP (8-32x.50) STRIPPER	84
2	458949-1	STRIPPER	19
2	3-21000-7	SCR, SKT CAP (10-32x.75) FEED ROD GD	83
2	3-21000-6	SCR, SKT CAP (10-32x.62) FEED ADJ BLK	82
2	3-21000-4	SCR, SKT CAP (10-32x.38) SG ADJ BL	81
2	691667-1	GUARD, CHIP (FRONT)	17
2	3-21000-4	SCR, SKT CAP (10-32x.38) PIVOT BLOCK	80
REF	455749-1	GUARD, WINDOW	79
1	1-465184-0	LUBRICATOR ASSY	78
REF	852931-2	OIL, LUBRICATING	77
1	5-22280-0	SPRING, SHEAR	13
1	690461-1	STOP, SHEAR	12
1	690459-1	HOLDER, SHEAR (FRONT)	11
1	462006-1	SHEAR, FLOAT (FRONT)	10
2	8-803653-0	ANVIL	9
2	23030-1	SCR, SKT CAP (6-32x.25) CP DISC	8
2	458109-1	WASHER, SPECIAL	7
1	690517-1	SPACER	6
1	22594-8	NUT, HEX	5
1	2-455889-0	DEPRESSOR, SHEAR (FRONT)	4
1	240628-1	PLATE, ADJUSTMENT	3
1	238011-2	SPACER, TUBULAR	2
1	240626-1	SHAFT, PIVOT	1
1	844991-1	CRIMPER, INSULATION	
1	455888-3	SPACER, CRIMPER	
1	844418-1	CRIMPER, WIRE	

REMARKS	NO	REV
APPL USED ON MACHINE PART NO	MACH SERIAL NO	DISTRIBUTION
CUSTOMER NAME	APPL SERIAL NO	ORIGINAL
ADDRESS	PURCHASE ORDER	CUSTOMER COPY
CITY	ENG APP	FIELD ENG COPY

CRIMPING DATA				APPLICATOR WILL APPLY	
PAD LTR	CRIMP HEIGHT	WIRE SIZE		66341	
A	NOT	USED		213543-2	
B	.035	22,24, OR 26 *			
C	.033	2 (30'S)			
D	NOT	USED			
CRIMP SIZE	TYPE	FEED	APPL INST		
WIRE .054	F	.350	A1 8040		
INSUL .090	0				
WIRE RANGE 26-22	INSULATION RANGE .028-.054	MACHINE NO 565435-5			

AMP-O-ELECTRIC
PRE-FEED

* (2) 26 OR (2) 29 WIRES MAY BE USED AT THIS CRIMP HEIGHT

SET UP GAGE	10-1	458637-1	L1322-1
DR	5-30-90	APP	5-30-90
P. MATHIAS	A. ENGINEER		
CHK	5-30-90	REL	5-30-90
C. ERISMAN	M. MATHIO		

AMP AMP INCORPORATED
Harrisburg, Pa.

LOC **D** NO 567313-3 REV D

NAME MINIATURE QUICK CHANGE APPLICATOR
SIDE FEED (SERPENT)

P	F	LTR	REVISION RECORD	APP	DATE