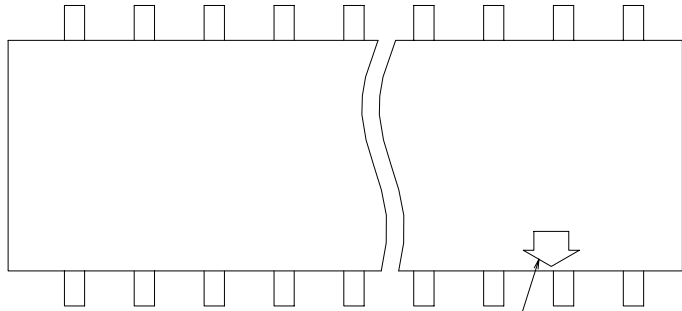




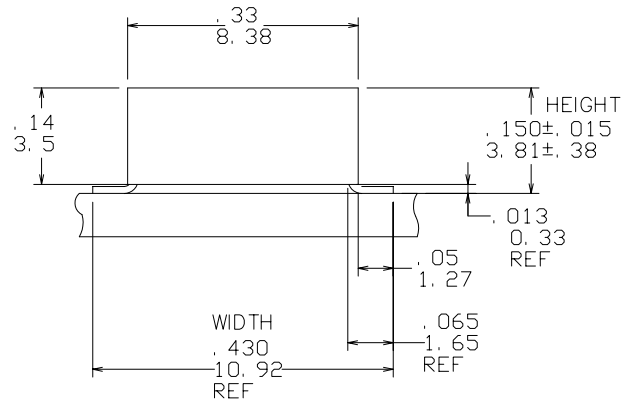
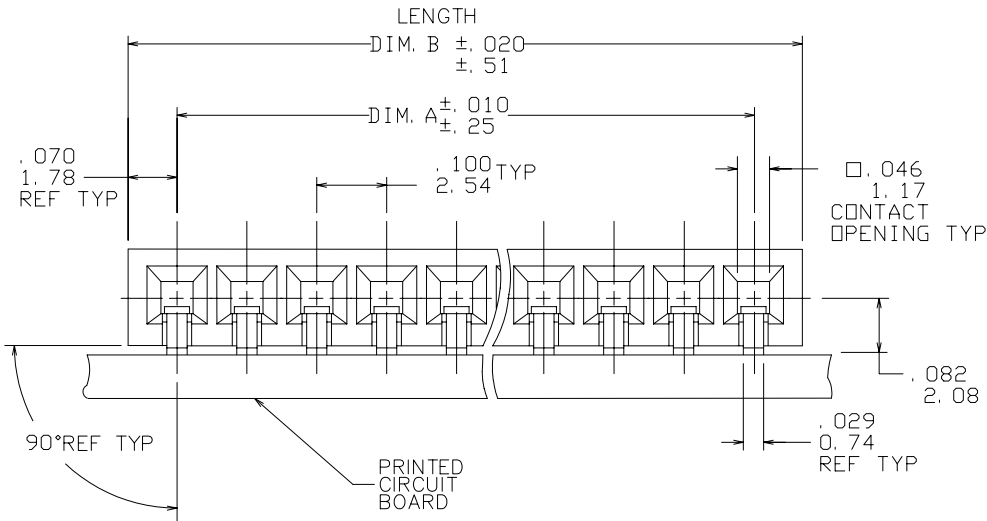
FCIconnect.com

Copyright FCI

PRODUCT NO.  
SEE TABLE



ARROW INDICATES PIN  
INSERTION SIDE



mat'l. code		surface ISO 1302 <input checked="" type="checkbox"/>		tolerance ISO 406 ISO 1101		projection 		product family CARD CONN	
ltr		ecn no dr		date		tolerances unless otherwise specified		title	
A		APPROVED		RDS		11/22/88		15μ"/0.38μ 1X.100	
B		V70468		MDF		8/7/97		SMT CARD CONNECTOR	
C		V02386		AZ		10/06/00		scale 4:1	
D		M05-0199		ERE		09/15/05		J.LINN 3/2/87	
E		M06-0210		MHT		6/03/06		enr M.HAHN 11/22/88	
								chr M.HAHN 11/22/88	
								appd M.HAHN 11/22/88	
sheet index		revision sheet		E		E		E	
		1 2		3 4					
								FCI	
								dwg no 68065 sheet 1 of 4 size A3	
								type Product Customer Drawing	

form: A3

PRODUCT NO.  
SEE TABLE

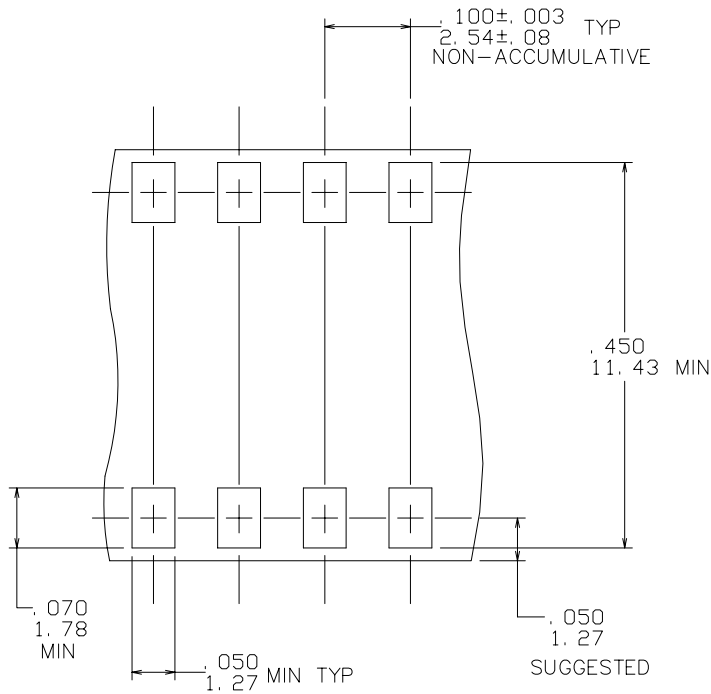


FIGURE 1  
SCALE 5:1

NOTES

1. HOUSING MATERIAL:  
FILLED HIGH TEMPERATURE NYLON  
COLOR: BLACK.
2. TERMINAL MATERIAL:  
BODY: BRASS, .010/.25 THICK.  
SPRING: BE-CU, HEAT TREATED.  
BODY PLATING:  
15 MICROINCH/.38 MICRON GOLD  
OVER 50 MICROINCH /1.27 MICRON NICKEL  
IN CONTACT AREA  
SPRING PLATING: GOLD FLASH
3. MARKING:  
FCI PART NUMBER AND DATE CODE LEGIBLE  
ON TUBE LABEL.
4. APPLICATION INFORMATION:
  - A. RECOMMENDED MOUNTING PAD  
PATTERN IS SHOWN IN FIGURE "1".
  - B. ALL MATING PINS TO BE  
.025/.64 SQUARE ON TRUE  
CENTER OF GIVEN TERMINAL  
SPACINGS WITHIN .015/.38 DIA.
  - C. SUGGESTED MATING PIN LENGTH  
.350±.020/8.89±.51.
- ⑤ ADD "LF" SUFFIX AT THE END OF PART NUMBER  
FOR LEAD FREE OPTION.
- ⑥ THESE PRODUCT MEET EUROPEAN UNION DIRECTIVES  
AND OTHER COUNTRY REGULATIONS AS DESCRIBED IN  
GS-22-008.
7. THIS PART WILL WITHSTAND EXPOSURE TO 260°C PEAK  
TEMPERATURE FOR 20 SECONDS IN WAVE SOLDER,  
INFRA-RED OR VAPOR PHASE SOLDER PROCESS.



FCIconnect.com

Copyright FCI

mat'l. code		surface ISO 1302 ✓		tolerance ISO 406 ISO 1101		projection ⊕		product family CARD CONN	
ltr		ecn no		dr		date		title	
E								15μ"/0.38μ 1X.100 SMT CARD CONNECTOR	
		angles		linear		.XX±.01/.X±.3 .XXX±.0.005/.XX±.13 XXXX±.0020/.XXX±.051		INCH/MM scale 4:1	
		0'±2'						dwg no 68065	
		dr		J.LINN		3/2/87		sheet 2 of 4 size A3	
		enr		M.HAHN		11/22/88		type Product Customer Drawing	
		chr		M.HAHN		11/22/88			
		appd		M.HAHN		11/22/88			
sheet index		revision sheet							



PRODUCT NO	NO. OF POS.	DIM A	DIM B	LEAD FREE OPTION
68065-001		UNAVAILABLE		
-002	1X2	.100/2.54	.240/6.10	NOTE 5
-003	1X3	.200/5.08	.340/8.64	
-004	1X4	.300/7.62	.440/11.18	
-005	1X5	.400/10.16	.540/13.72	
-006	1X6	.500/12.70	.640/16.26	
-007	1X7	.600/15.24	.740/18.80	
-008	1X8	.700/17.78	.840/21.34	
-009	1X9	.800/20.32	.940/23.88	
-010	1X10	.900/22.86	1.040/26.42	
-011	1X11	1.000/25.40	1.140/28.96	
-012	1X12	1.100/27.94	1.240/31.50	
-013	1X13	1.200/30.48	1.340/34.04	
-014	1X14	1.300/33.02	1.440/36.58	
-015	1X15	1.400/35.56	1.540/39.12	
-016	1X16	1.500/38.10	1.640/41.66	
-017	1X17	1.600/40.64	1.740/44.20	
-018	1X18	1.700/43.18	1.840/46.74	
-019	1X19	1.800/45.72	1.940/49.28	
-020	1X20	1.900/48.26	2.040/51.82	
-021	1X21	2.000/50.80	2.140/54.36	
-022	1X22	2.100/53.34	2.240/56.90	
-023	1X23	2.200/55.88	2.340/59.44	
-024	1X24	2.300/58.42	2.440/61.98	
-025	1X25	2.400/60.96	2.540/64.52	
-026	1X26	2.500/63.50	2.640/67.06	
-027	1X27	2.600/66.04	2.740/69.60	
-028	1X28	2.700/68.58	2.840/72.14	
-029	1X29	2.800/71.12	2.940/74.68	
-030	1X30	2.900/73.66	3.040/77.22	
-031	1X31	3.000/76.20	3.140/79.76	
-032	1X32	3.100/78.74	3.240/82.30	
-033	1X33	3.200/81.28	3.340/84.84	
-034	1X34	3.300/83.82	3.440/87.38	
-035	1X35	3.400/86.36	3.540/89.92	
-036	1X36	3.500/88.90	3.640/92.46	
-037	1X37	3.600/91.44	3.740/95.00	
-038	1X38	3.700/93.98	3.840/97.54	
-039	1X39	3.800/96.52	3.940/100.08	
68065-040	1X40	3.900/99.06	4.040/102.62	



FCIconnect.com

Copyright FCI

mat'l. code		surface ISO 1302 <input checked="" type="checkbox"/>		tolerance ISO 406 ISO 1101		projection 		product family CARD CONN	
ltr		ecn no		date		tolerances unless otherwise specified		title	
E						.XX±.01/.X±.3		15μ"/0.38μ 1X.100	
						linear .XXX±.0.005/.XX±.13		SMT CARD CONNECTOR	
						0'±2'		INCH/MM	
						.XXXX±.0020/.XXX±.051		scale 4:1	
						dr J.LINN 3/2/87		dwg no sheet 3 of 4 size	
						enr M.HAHN 11/22/88		68065 A3	
						chr M.HAHN 11/22/88		type Product Customer Drawing	
						appd M.HAHN 11/22/88			
sheet index		revision sheet							



form: A3

PRODUCT NO	NO. OF POS.	DIM A	DIM B	LEAD FREE OPTION
68065-041	1X41	4.000/101.60	4.140/105.16	NOTE 5 ↑ ↓
-042	1X42	4.100/104.14	4.240/107.70	
-043	1X43	4.200/106.68	4.340/110.24	
-044	1X44	4.300/109.22	4.440/112.78	
-045	1X45	4.400/111.76	4.540/115.32	
-046	1X46	4.500/114.30	4.640/117.86	
-047	1X47	4.600/116.84	4.740/120.40	
-048	1X48	4.700/119.38	4.840/122.94	
-049	1X49	4.800/121.92	4.940/125.48	
-050	1X50	4.900/124.46	5.040/128.02	
-051	1X51	5.000/127.00	5.140/130.56	NOTE 5
68065-052	1X52	5.100/129.54	5.240/133.10	



Copyright FCI

mat'l. code		surface ISO 1302 <input checked="" type="checkbox"/>		tolerance ISO 406 ISO 1101		projection 		product family CARD CONN	
ltr	ecn	no	dr	date		tolerances unless otherwise specified		title	
E						angles	linear	15μ"/0.38μ 1X.100	
						0°±2'		SMT CARD CONNECTOR	
						dr	J.LINN	3/2/87	
						enr	M.HAHN	11/22/88	
						chr	M.HAHN	11/22/88	
						appd	M.HAHN	11/22/88	
sheet index		revision sheet						scale 4:1	
								dwg no 68065 sheet 4 of 4 size A3	
								type Product Customer Drawing	



form: A3 1 2 3 4 5 6