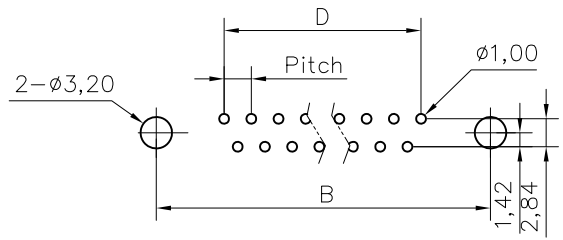
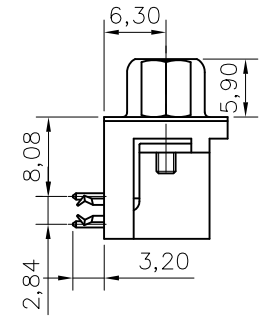
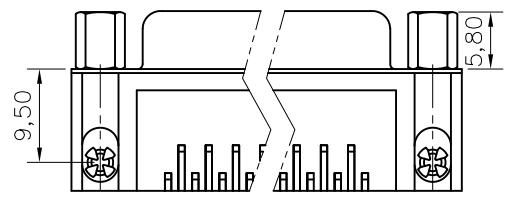
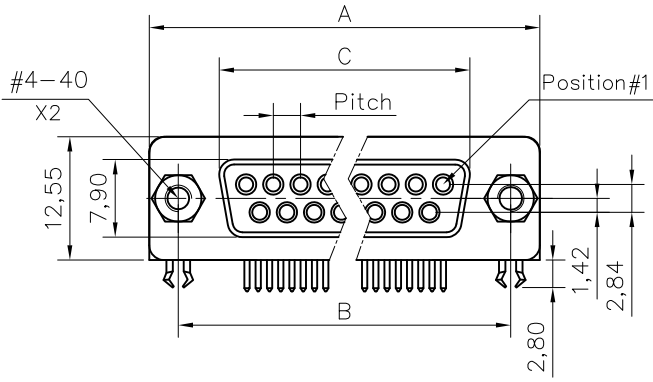


This document is the property of Amphenol Corporation and is delivered on the express condition that it is not to be disclosed, reproduced or used, in whole or in part, for manufacture or sale by anyone other than Amphenol Corporation without its prior consent, & that no right is granted to disclose or to use any information in this document.



RECOMMENDED P.C.B LAYOUT
(TOLERANCE +/-0.03)

Customer drawing

DIM.S	A	B	C	D	Pitch
09	30.81	24.99	16.24	10.96	2.74
15	39.14	33.32	24.56	19.18	2.74
25	53.04	47.04	38.38	33.24	2.77
37	69.32	63.50	54.76	49.86	2.77

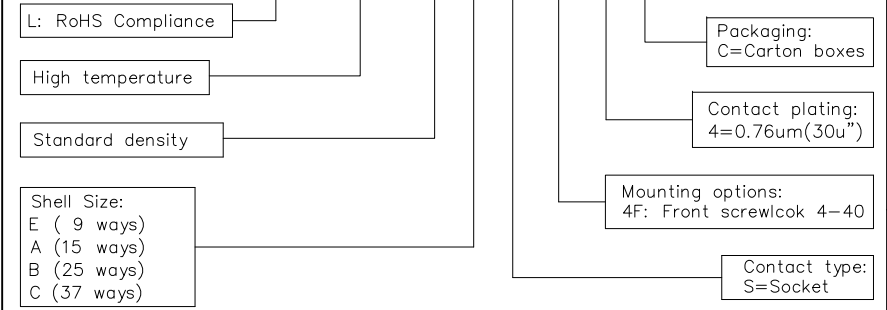
REVISIONS				
SYM	ECN	DESCRIPTION	DATE	APPROVED
1		New drawing	12/18/08	
2		Add more information	12/18/08	

D-SUB TECHNICAL DATA

SHELL : Steel, 100u" min tin over 50u" min nickel
 BODY : Glass filled thermoplastic.
 Flame retardant to UL94 V-0 Color Black
 PA9T, resist to 260°C,10S
 CONTACTS : Copper alloy
 0.76um(30u") over 1.25um (50u") min nickel on mating area.
 100u" min tin over 50" min nickel on solder area
 BOARDLOCK : Brass,100u" tin over 50u" min nickel
 SCREWLOCK : Brass, 50u" min nickel
 ELECTRICAL : Voltage rating 600 V Rms to 50 Hz
 Current rating 5A
 Withstanding Voltage >1000 V Rms to 50 Hz for one minute
 Insulation resistance >5000 M Ohms
 Contact resistance 20 mOhms max.
 SALT SPRAY : 8h
 CLIMATIC : Temperature range -55 °C up to 150°C
 MARKING : Amphenol...(Series NO.)
 Commercial reference
 Manufacturing date

PRODUCT CODE

L 17HT N X S 4F 4 C



UNLESS OTHERWISE SPECIFIED TOLERANCES		APPROVAL		DATE
U.S.	METRIC	DRAWN	Checked	12/18/08
.X +/-	0.50	Christina.cout		
.XX +/-	0.30	Lik.wang		12/18/08
.XXX +/-	0.20	CHECKED		
FRACTIONS +/-				
ANGLES +/-	2'			
FOR MATERIALS AND FINISHES SEE NOTES		DRAWING FILE :		
REMOVE SHARP EDGES		ANGLE OF PROJECTION		
DIMENSIONS				
U.S.	INCHES			
METRIC	MM			

Amphenol®		
TITLE D-SUB connectors, HTN series		
SIZE	DRAWING NO.	REV.
A4	C L17HTNXS4F4C	2
SCALE	N/A	SHEET 1 OF 1