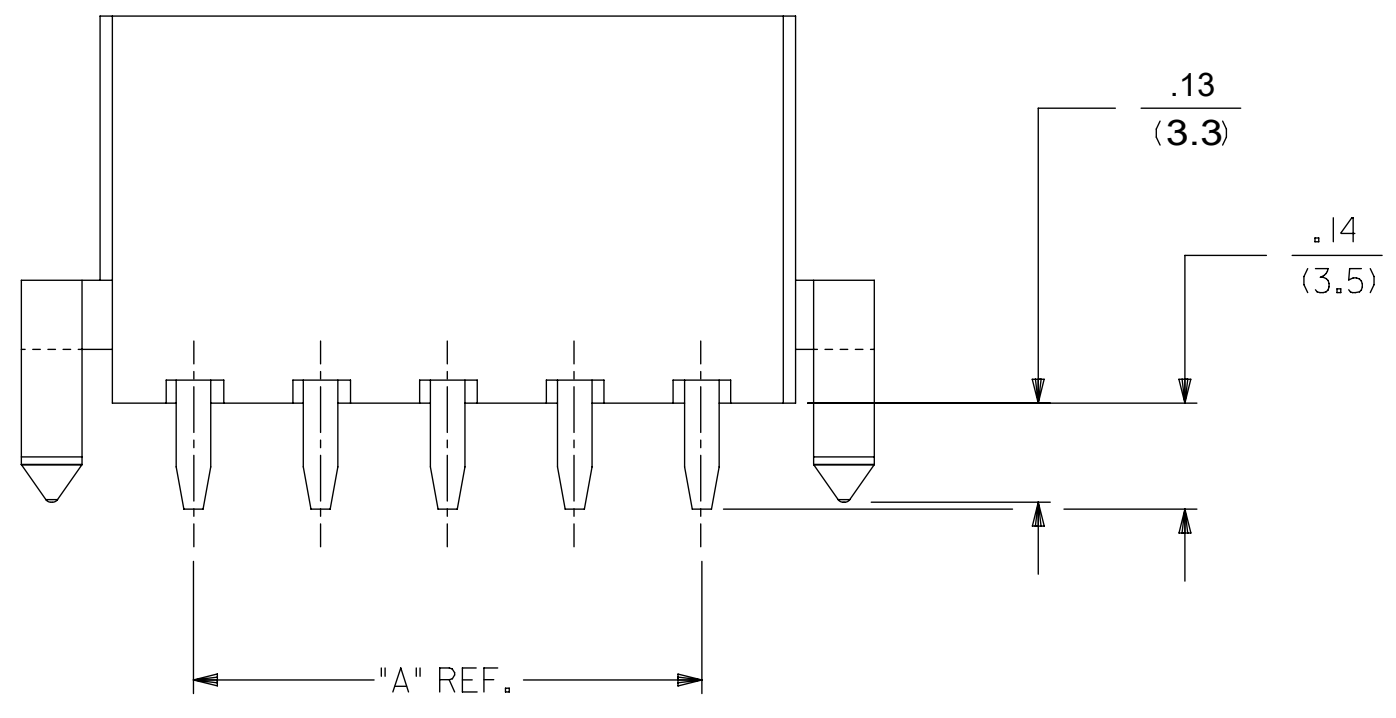
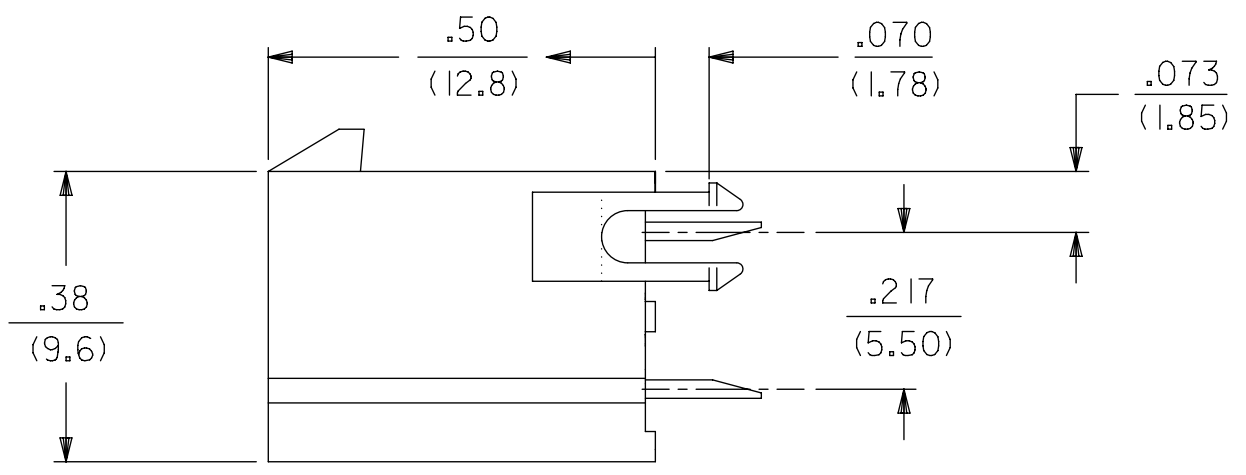
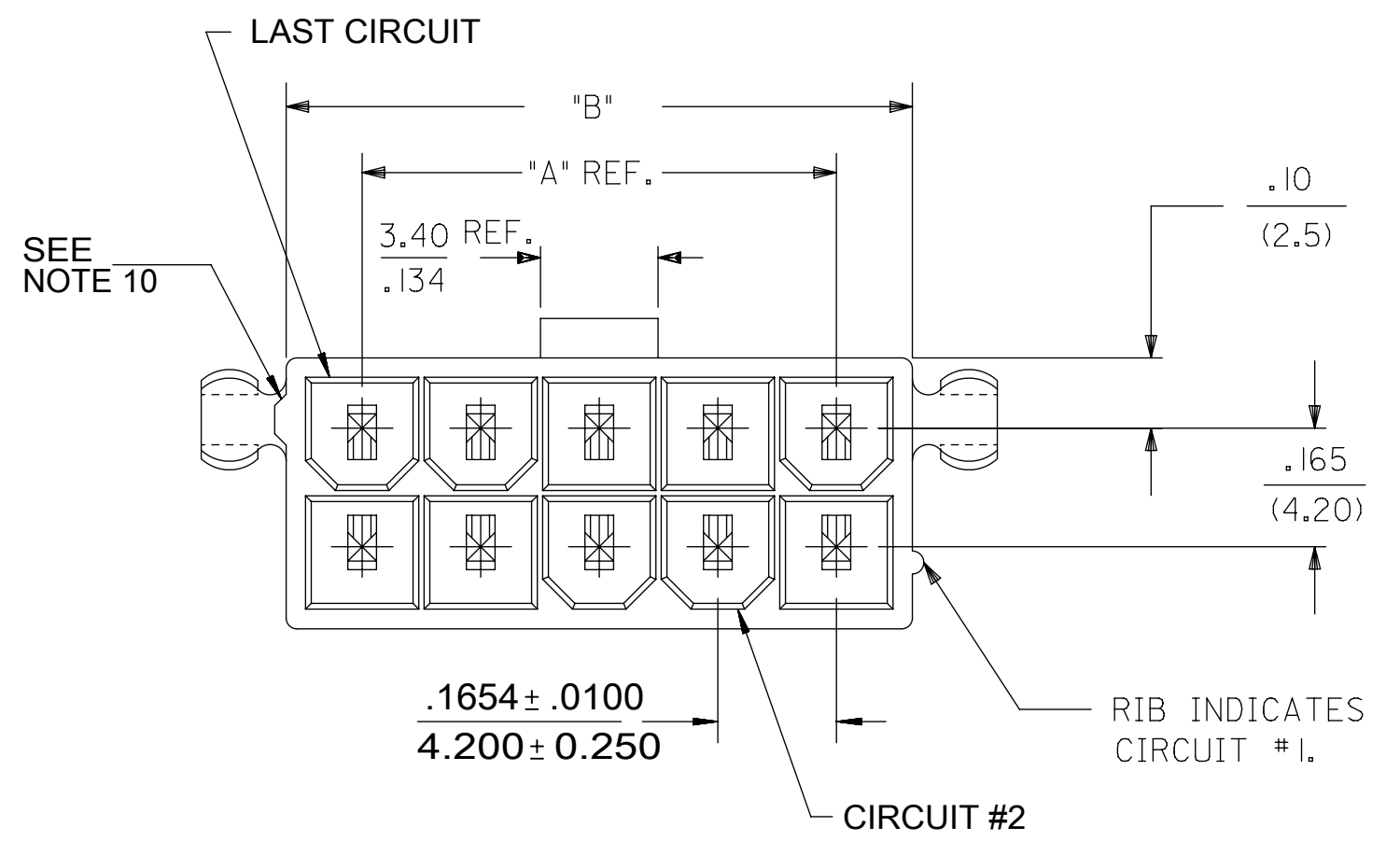


CIRCUIT SIZE	DIM. "A"	DIM. "B"	DIM. "C"
2	—	.21 (5.4)	.370 (9.40)
4	.17 (4.2)	.38 (9.6)	.535 (13.60)
6	.33 (8.4)	.54 (13.8)	.701 (17.80)
8	.50 (12.6)	.71 (18.0)	.866 (22.00)
10	.66 (16.8)	.87 (22.2)	1.031 (26.20)
12	.83 (21.0)	1.04 (26.4)	1.197 (30.40)
14	.99 (25.2)	1.20 (30.6)	1.362 (34.60)
16	1.16 (29.4)	1.37 (34.8)	1.528 (38.80)
18	1.32 (33.6)	1.54 (39.0)	1.693 (43.00)
20	1.49 (37.8)	1.70 (43.2)	1.858 (47.20)
22	1.65 (42.0)	1.87 (47.4)	2.024 (51.40)
24	1.82 (46.2)	2.03 (51.6)	2.189 (55.60)



- NOTES::
- HOUSING MATERIAL:
V-2 = NYLON 6/6, UNFILLED U.L. 94V-2, COLOR: NATURAL
V-0 = NYLON 6/6, UNFILLED U.L. 94V-0, COLOR: NATURAL
TERMINAL MATERIAL: COPPER ALLOY.
 - TERMINAL PLATING:
TIN = .000100/(.00254) MIN. MATTE TIN OVER .000050/(.00127) MIN. NICKEL OVERALL
GOLD = .000030/(.00080) MIN. SELECT GOLD, .000100/(.00254) MIN. MATTE TIN OVER .000050/(.00127) MIN. NICKEL OVERALL
 - PRODUCT SPECIFICATION: PS-45750-001
 - PACKAGING SPECIFICATION: PK-5566-001.
 - PART MATES WITH MINI-FIT RECEPTACLE NO. 5557
 - PART ARE NOT TO BE MATED OR UN-MATED WHILE CIRCUITS ARE LIVE
 - PARTS TO HAVE "HCS+" MARKING
 - PART CONFORMS TO CLASS B OF COSMETIC SPECIFICATION PS-45499-002 WITH THE EXCEPTION OF DISCOLORATION, FLASH, AND SINK MEET CLASS "C" REQUIREMENTS.
 - PART IS NOT DESIGNED FOR CURRENT SHARING.
 - ANTI-SHINGLING RIB MAY OR MAY NOT APPEAR ON HOUSINGS.
 - LOCATION OF .118/3.00 DIAMETER HOLES ON P.C. BOARD IS FOR OPTIONAL PEGS.
 - TEXT ON PART IS FOR REFERENCE ONLY. TEXT AND TEXT LOCATION MAY VARY DEPENDING ON PART NUMBER AND/OR TOOL.

THIS DRAWING CONTAINS INFORMATION THAT IS PROPRIETARY TO MOLEX ELECTRONIC TECHNOLOGIES, LLC AND SHOULD NOT BE USED WITHOUT WRITTEN PERMISSION

QUALITY SYMBOLS	OBSOLETE GW PINS	GENERAL TOLERANCES (UNLESS SPECIFIED)	DIMENSION UNITS		SCALE
			MM	INCH	4:1
▽ = 0	2016/01/27	4 PLACES ±	DRWN BY	DATE	molex®
▽ = 0	2016/10/27	3 PLACES ± ± 0.01	TGREGORI	2006/04/27	
▽ = 0	2016/11/02	2 PLACES ± 0.25 ± 0.2	CHK'D BY	DATE	VERTICAL HEADER ASSEMBLY DUAL ROW MINI-FIT PLUS HCS SERIES
▽ = 0		1 PLACES ± 0.5 ±	JCOMERCI		
▽ = 0		0 PLACES ± ±	APPR BY	DATE	PRODUCT CUSTOMER DRAWING
▽ = 0		ANGULAR TOL = 0.5	FSMITH	2010/04/09	
▽ = 0	EC NO: 102682	DRAFT WHERE APPLICABLE MUST REMAIN WITHIN DIMENSIONS	DRAWING SIZE	THIRD ANGLE PROJECTION	SERIES
▽ = 0	DRWN: CSLAFTER		C		46015
▽ = 0	CHKD: JBELL				MATERIAL NUMBER
▽ = 0	REV / APPR: FSMITH				SEE CHART
					CUSTOMER
					GENERAL MARKET
					DOCUMENT NUMBER
					SD-46015-001
					DOC TYPE
					PSD
					DOC PART
					000
					SHEET NUMBER
					1 OF 2

ITEM NO.	CKT. SIZE	HOUSING MATERIAL	PEGS	PLATING	
46015-0202	2	V-0	NO	TIN	
46015-0203			YES		
46015-0206		V-2	NO		
46015-0207			YES		
46015-0209		V-0	YES		GOLD
46015-0212			NO		
46015-0402	4	V-0	NO	TIN	
46015-0403			YES		
46015-0406		V-2	NO		
46015-0407			YES		
46015-0409		V-0	YES		GOLD
46015-0412			NO		
46015-0602	6	V-0	NO	TIN	
46015-0603			YES		
46015-0606		V-2	NO		
46015-0607			YES		
46015-0609		V-0	YES		GOLD
46015-0612			NO		
46015-0802	8	V-0	NO	TIN	
46015-0803			YES		
46015-0806		V-2	NO		
46015-0807			YES		
46015-0809		V-0	YES		GOLD
46015-0812			NO		
46015-1002	10	V-0	NO	TIN	
46015-1003			YES		
46015-1006		V-2	NO		
46015-1007			YES		
46015-1009		V-0	YES		GOLD
46015-1012			NO		
46015-1202	12	V-0	NO	TIN	
46015-1203			YES		
46015-1206		V-2	NO		
46015-1207			YES		
46015-1209		V-0	YES		GOLD
46015-1212			NO		

ITEM NO.	CKT. SIZE	HOUSING MATERIAL	PEGS	PLATING	
46015-1402	14	V-0	NO	TIN	
46015-1403			YES		
46015-1406		V-2	NO		
46015-1407			YES		
46015-1409		V-0	YES		GOLD
46015-1412			NO		
46015-1602	16	V-0	NO	TIN	
46015-1603			YES		
46015-1606		V-2	NO		
46015-1607			YES		
46015-1609		V-0	YES		GOLD
46015-1612			NO		
46015-1802	18	V-0	NO	TIN	
46015-1803			YES		
46015-1806		V-2	NO		
46015-1807			YES		
46015-1809		V-0	YES		GOLD
46015-1812			NO		
46015-2002	20	V-0	NO	TIN	
46015-2003			YES		
46015-2006		V-2	NO		
46015-2007			YES		
46015-2009		V-0	YES		GOLD
46015-2012			NO		
46015-2202	22	V-0	NO	TIN	
46015-2203			YES		
46015-2206		V-2	NO		
46015-2207			YES		
46015-2209		V-0	YES		GOLD
46015-2212			NO		
46015-2402	24	V-0	NO	TIN	
46015-2403			YES		
46015-2406		V-2	NO		
46015-2407			YES		
46015-2409		V-0	YES		GOLD
46015-2412			NO		

RELEASE STATUS	P1	RELEASE DATE	02.11.2016	21:11:43
12		11		10
			9	
			8	
			7	
			6	
			5	
			4	
			3	
			2	
			1	

QUALITY SYMBOLS		THIS DRAWING CONTAINS INFORMATION THAT IS PROPRIETARY TO MOLEX ELECTRONIC TECHNOLOGIES, LLC AND SHOULD NOT BE USED WITHOUT WRITTEN PERMISSION												
	= 0	OBSOLETE GW P/N'S EC NO: 102682 DRWN: CSLAFTER CHKD: JBELL REV APPR: FSMITH	GENERAL TOLERANCES (UNLESS SPECIFIED)				DIMENSION UNITS		SCALE		molex			
	= 0		MM		INCH		IN/MM		4:1					
	= 0		4 PLACES ± ±				DRWN BY		DATE		VERTICAL HEADER ASSEMBLY DUAL ROW MINI-FIT PLUS HCS SERIES			
	= 0		3 PLACES ± ± 0.01				TGREGORI		2006/04/27					
	= 0		2 PLACES ± 0.25 ± 0.2				CHK'D BY		DATE		PRODUCT CUSTOMER DRAWING			
	= 0		1 PLACES ± 0.5 ±				JCOMERCI							
	= 0		0 PLACES ± ±				APPR BY		DATE		SERIES MATERIAL NUMBER CUSTOMER 46015 SEE CHART GENERAL MARKET			
	= 0		ANGULAR TOL = 0.5				FSMITH		2010/04/09					
	= 0		DRAFT WHERE APPLICABLE MUST REMAIN WITHIN DIMENSIONS				DRAWING SIZE		THIRD ANGLE PROJECTION		DOCUMENT NUMBER DOC TYPE DOC PART SHEET NUMBER SD-46015-001 PSD 000 2 OF 2			
	= 0		C											