

REVISION C

DO NOT SCALE FROM THIS PRINT

NOTES:

1. ⊕ REPRESENTS A CRITICAL DIMENSION.
2. PARTS TO BE PACKAGED IN TUBE.
3. SPECIAL GAGE AT-2019-049 TO BE USED FOR DIMENSIONS C1, C2, C4, C5 C6, C7 CHECK.

DESIGNED & DIMENSIONED IN MILLIMETERS [INCHES]

PCIE-XXX-02-X-D-RA

NO OF POSITIONS
-036, -064, -098, -164 (DOUBLE ROW)

LEAD STYLE
-02: 1.57 [0.062"] THICK CARD

PLATING SPECIFICATION
(VALUES GIVEN ARE IN MICRO INCHES)
-S: 30u" MIN Au/50u" Ni IN CONTACT, MATING TIN ON TAIL
-F: 3u" MIN Au/50u" Ni IN CONTACT, MATING TIN ON TAIL

OPTION
-RA: RIGHT ANGLE

ROW SPECIFICATION
-D: DOUBLE ROW

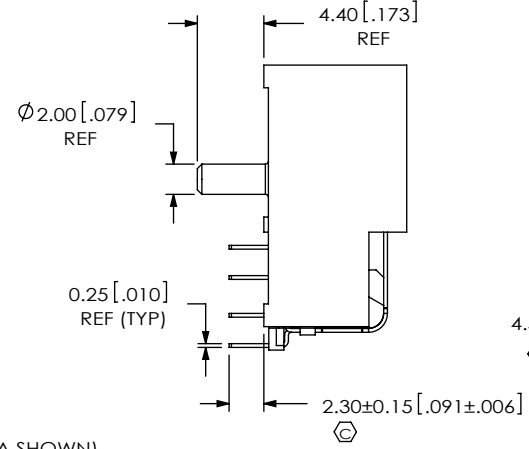
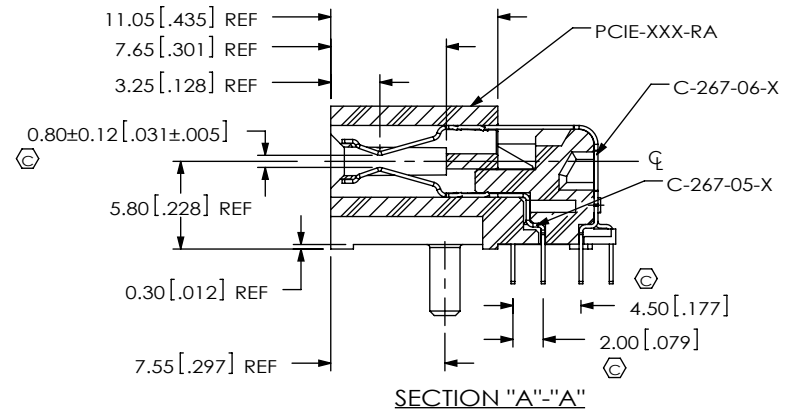
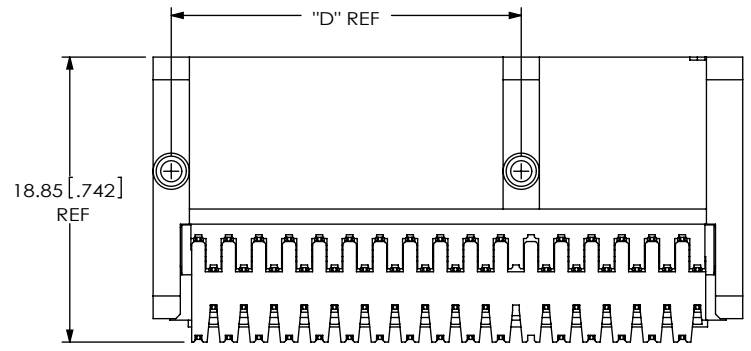
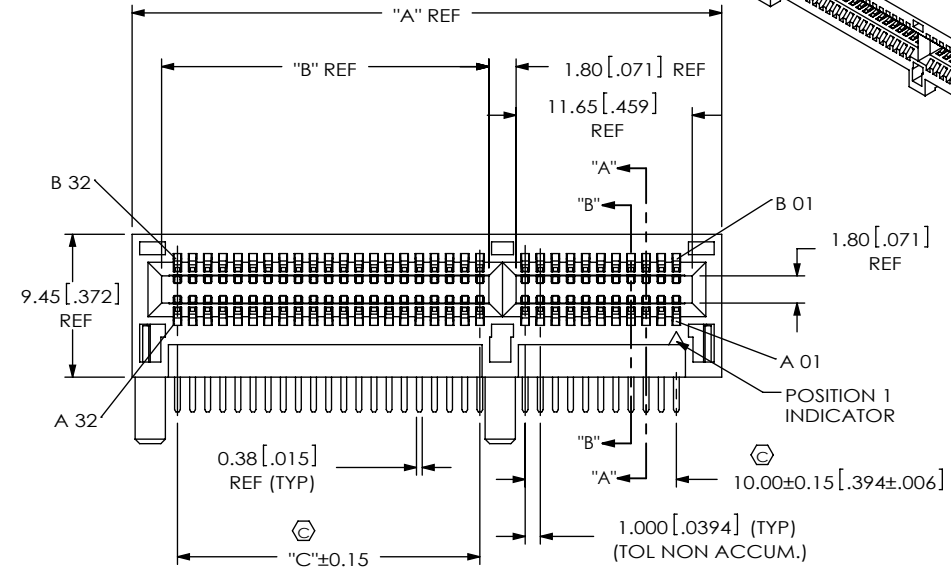
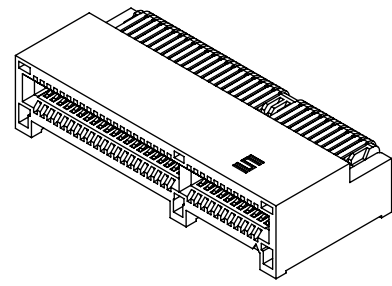
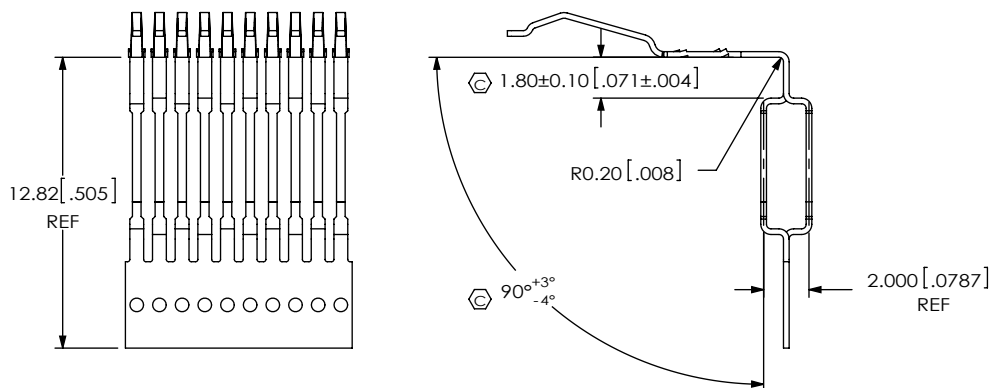


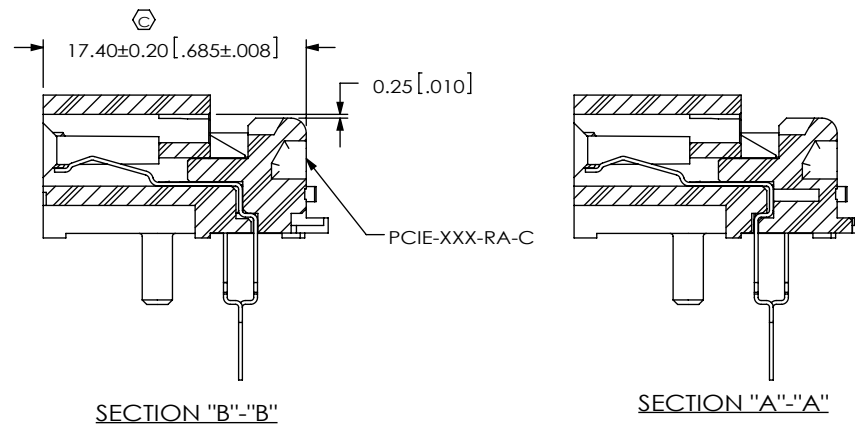
FIG. 1
(PCIE-064-02-X-D-RA SHOWN)

SECTION "B"-"B"
(SAME AS SECTION "A"-"A", EXCEPT AS SHOWN)

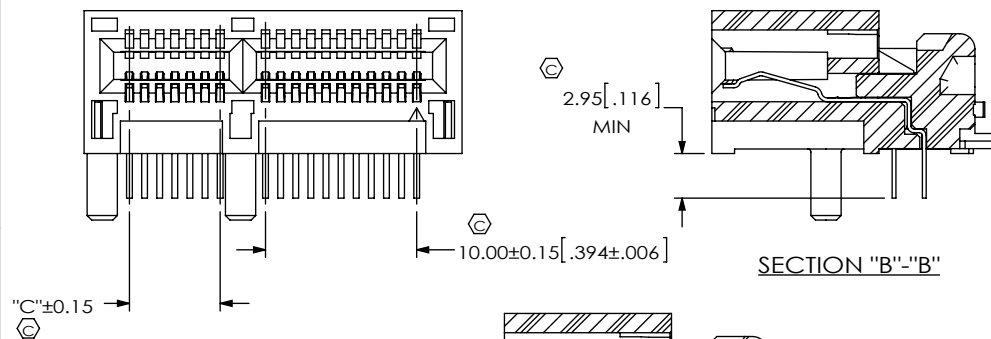
| | | |
|---|--|--|
| <p>UNLESS OTHERWISE SPECIFIED, DIMENSIONS ARE IN MILLIMETERS [INCHES]. TOLERANCES ARE: DECIMALS ANGLES X.X: ±0.3 [0.1] X.XX: ±0.13 [0.005] X.XXX: ±0.051 [0.0020]</p> | <p>PROPRIETARY NOTE THIS DOCUMENT CONTAINS CONFIDENTIAL AND PROPRIETARY INFORMATION AND ALL DESIGN, MANUFACTURING, REPRODUCTION, USE, PATENT RIGHTS AND SALES RIGHTS ARE EXPRESSLY RESERVED BY SAMTEC, INC. THIS DOCUMENT SHALL NOT BE DISCLOSED, IN WHOLE OR PART, TO ANY UNAUTHORIZED PERSON OR ENTITY NOR REPRODUCED, TRANSFERRED OR INCORPORATED IN ANY OTHER PROJECT IN ANY MANNER WITHOUT THE EXPRESS WRITTEN CONSENT OF SAMTEC, INC.</p> | <p>samtec 520 PARK EAST BLVD, NEW ALBANY, IN 47150 PHONE: 812-944-6733 FAX: 812-948-5047 e-Mail: info@SAMTEC.com code 55322</p> |
| | | |
| <p>INSULATOR: LCP, COLOR: BLACK CONTACT: PHOS BRONZE</p> | <p>DWG. NO. PCIE-XXX-02-X-D-RA</p> | <p>BY: ROY LUO 10/21/2009 SHEET 1 OF 3</p> |



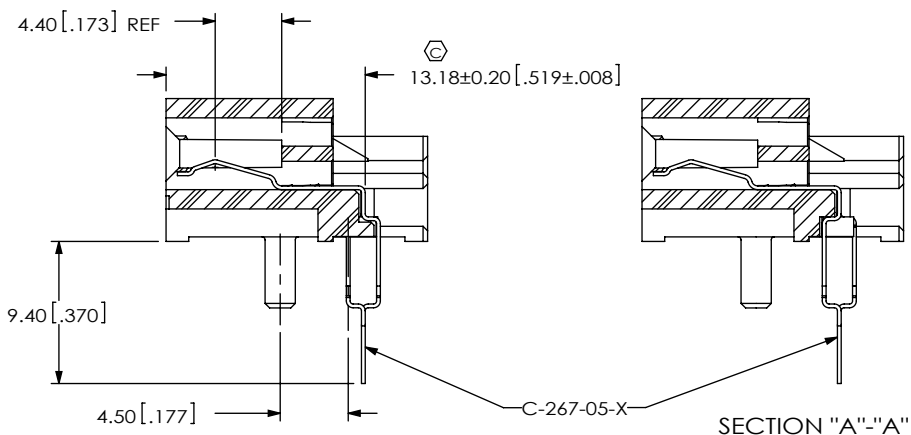
IN-PROCESS 1
(FORM CONTACT C-267-05-X)



IN-PROCESS 3
(FILL PCIE-XXX-RA-C)



IN-PROCESS 4
(CUTOFF OF CARRIER)



IN-PROCESS 2
(FILL BOTTOM ROW)

PROPRIETARY NOTE
 THIS DOCUMENT CONTAINS CONFIDENTIAL AND PROPRIETARY INFORMATION AND ALL DESIGN, MANUFACTURING, REPRODUCTION, USE, PATENT RIGHTS AND SALES RIGHTS ARE EXPRESSLY RESERVED BY SAMTEC, INC. THIS DOCUMENT SHALL NOT BE DISCLOSED, IN WHOLE OR PART, TO ANY UNAUTHORIZED PERSON OR ENTITY NOR REPRODUCED, TRANSFERRED OR INCORPORATED IN ANY OTHER PROJECT IN ANY MANNER WITHOUT THE EXPRESS WRITTEN CONSENT OF SAMTEC, INC.

DO NOT SCALE DRAWING

SHEET SCALE: 2:1

samtec

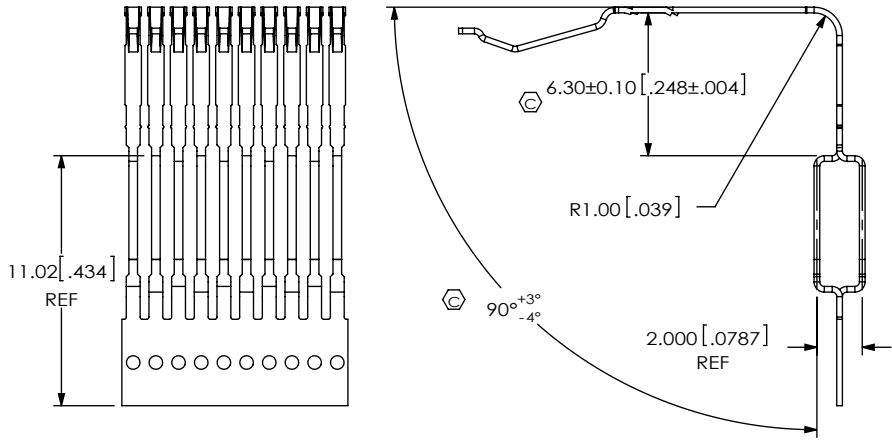
520 PARK EAST BLVD, NEW ALBANY, IN 47150
 PHONE: 812-944-6733 FAX: 812-948-5047
 e-Mail: info@SAMTEC.com code 55322

DESCRIPTION:
 PCI EXPRESS RIGHT ANGLE ASSEMBLY

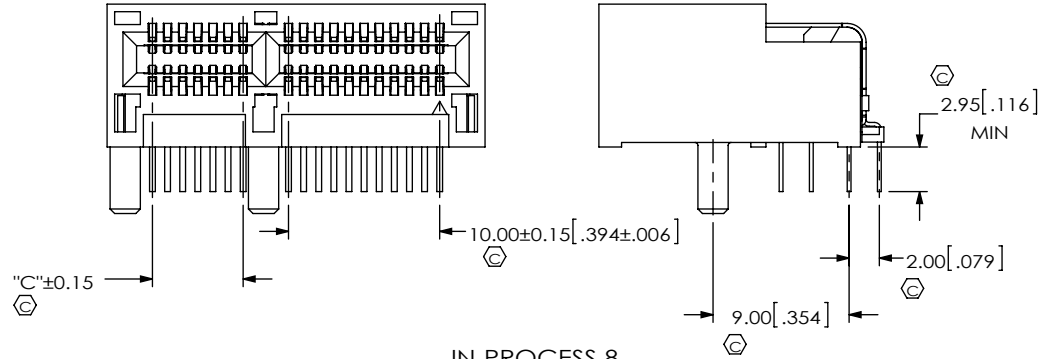
DWG. NO.

PCI-E-XXX-02-X-D-RA

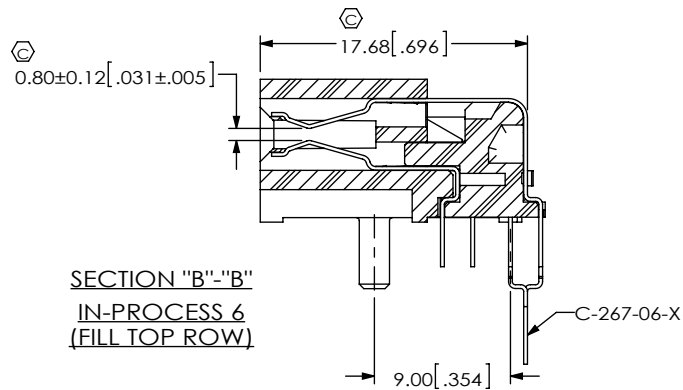
BY: ROY LUO 10/21/2009 SHEET 2 OF 3



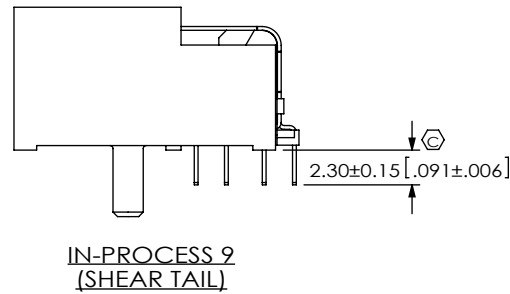
IN-PROCESS 5
(FORM CONTACT C-267-06-X)



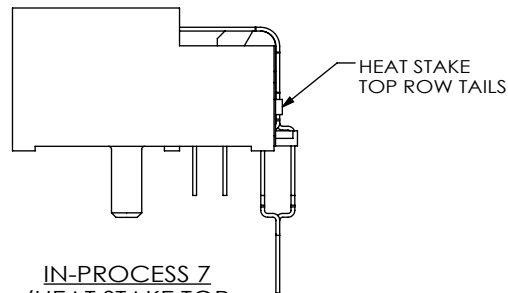
IN-PROCESS 8
(CUT OFF TOP CONTACT CARRIER)



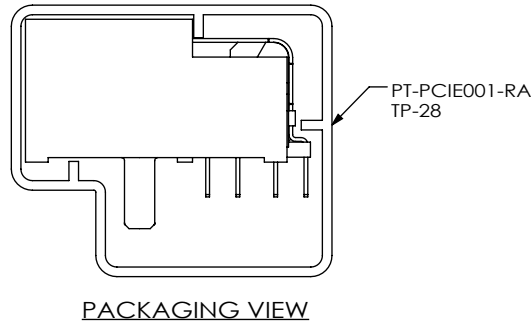
SECTION "B"-"B"
IN-PROCESS 6
(FILL TOP ROW)



IN-PROCESS 9
(SHEAR TAIL)



IN-PROCESS 7
(HEAT STAKE TOP ROW CONTACTS)



PACKAGING VIEW

F:\dwg\misc\mktg\PCIE-XXX-02-X-D-RA-MKT.SLDDRW

PROPRIETARY NOTE
THIS DOCUMENT CONTAINS CONFIDENTIAL AND PROPRIETARY INFORMATION AND ALL DESIGN, MANUFACTURING, REPRODUCTION, USE, PATENT RIGHTS AND SALES RIGHTS ARE EXPRESSLY RESERVED BY SAMTEC, INC. THIS DOCUMENT SHALL NOT BE DISCLOSED, IN WHOLE OR IN PART, TO ANY UNAUTHORIZED PERSON OR ENTITY NOR REPRODUCED, TRANSFERRED OR INCORPORATED IN ANY OTHER PROJECT IN ANY MANNER WITHOUT THE EXPRESS WRITTEN CONSENT OF SAMTEC, INC.

DO NOT SCALE DRAWING

SHEET SCALE: 2:1



520 PARK EAST BLVD, NEW ALBANY, IN 47150
PHONE: 812-944-6733 FAX: 812-948-5047
e-Mail info@SAMTEC.com code 55322

DESCRIPTION:
PCI EXPRESS RIGHT ANGLE ASSEMBLY

DWG. NO.
PCIE-XXX-02-X-D-RA

BY: ROY LUO 10/21/2009 SHEET 3 OF 3