

ATLANTIC VERSION TERMINATOR INTERFACE ADAPTER	PART NUMBER	REVISION	DESCRIPTION	FEED TYPE	CONVERT TO	PART NUMBERS REQUIRED					
	2266214-1	A	FINE CRIMP HEIGHT ADJUST	MECHANICAL	PNEUMATIC FEED	2119950-1	1338685-1	5-18022-5	2119641-1	2119799-1	2063440-1
	2266214-2	A	FINE CRIMP HEIGHT ADJUST	PNEUMATIC	SERVO LATCH PLATE	2119951-1	-	8-2266214-5	1901094-3	-	2168400-6 (QUANTITY 2)
					SMART APPLICATOR	2161326-1	-	8-2266214-4	-	-	
					MECHANICAL FEED	2119949-1	1338685-1	5-18022-5	2119653-1	-	-
	2266214-5	A	FINE CRIMP HEIGHT ADJUST	SERVO LATCH PLATE ⁴	SERVO LATCH PLATE	2119951-1	-	8-2266214-5	1901094-3	-	2168400-6 (QUANTITY 2)
					SMART APPLICATOR	2161326-1	-	8-2266214-4	-	-	
					MECHANICAL FEED	2119949-1	1338685-1	5-18022-5	2119653-1	-	-
2266214-6	A	NON-CRIMP HEIGHT ADJUST	SERVO LATCH PLATE ⁴	-	-	-	-	-	-	-	
2266214-7	A	FINE CRIMP HEIGHT ADJUST	NONE	-	-	-	-	-	-	-	
7-2266214-7	A	CRIMP TOOLING KIT	-	-	-	-	-	-	-	-	

APPLICATOR DATA		
CRIMP	SIZE	TYPE
WIRE	1.57 mm [.062]	F
INSUL	3.05 mm [.120]	O

APPLICATOR INSTRUCTIONS 408-10389

TERMINAL DATA: DELPHI TERMINAL DELPHI CRIMP SPECIFICATION				
TERMINAL NAME: MICRO TERMINAL				
WIRE STRIP LENGTH 3.25-4.01 mm [.128-.158 IN]	INSULATION DIAMETER RANGE Ø ¹³			
TERMINAL APPLICATION SPECIFICATION	DELPHI CRIMP INFORMATION SHEET			
TERMINALS APPLIED ¹³				
TE TERMINAL	DELPHI TERMINAL	TE SEAL	DELPHI SEAL	INSULATION Ø
(A) 2113397-1	(A) 13580648	(A) 1949130-1	(A) 15327918	1.40-2.00mm
		(A) 1949130-2	(A) 15327913	1.20-1.60mm
		(A) 1949130-5	(A) 15344777	1.20-1.60mm
		(A) 1949130-6	(A) 15344778	1.40-2.00mm

WIRE SIZE	CRIMP HEIGHT mm [INCH]	CRIMP HEIGHT REFERENCE SETTING
0.75mm ²	1.15+/-0.05 [.045+/-0.002]	5.9
0.50mm ²	1.05+/-0.05 [.041+/-0.002]	6.9

- ¹ RECOMMENDED SPARE PARTS
- ² GREASE BEARING SURFACES LIGHTLY
- ³ LUBRICATE DAILY PER THE APPLICATOR INSTRUCTION SHEET SUPPLIED WITH THE APPLICATOR.
- ⁴ APPLICATOR SPECIFIC DATA TO BE ENTERED INTO BLANK MEMORY CHIP AT ASSEMBLY. SEE BELOW FOR PART NUMBER:
 MECHANICAL FEED WITH "SMART APPLICATOR" CONVERSION: 8-2266214-4
 PNEUMATIC FEED WITH "SMART APPLICATOR" CONVERSION: 8-2266214-4
 SERVO FEED WITH "FINE CRIMP HEIGHT ADJUST": 8-2266214-5
 SERVO FEED WITH "NON-CRIMP HEIGHT ADJUST": 8-2266214-6
- ⁵ ADJUSTMENT OF THE STRIPPER MAY BE REQUIRED WHEN MOVING THE APPLICATOR BETWEEN BENCH AND LEADMAKER APPLICATIONS.
- ⁶ APPLY PART NUMBER 1-23419-5 LOCTITE TO THREADS OF ITEMS 62 & 242. FOR -6 ONLY APPLY PART NUMBER 1-23419-5 LOCTITE TO THREADS OF ITEMS 37 & 242.
- ⁷ GREASE THREADS, GROOVE AND O-RING ON ITEMS 35 & 252.
- ⁸ MAGNET, ITEM 166 MUST BE ORIENTED CORRECTLY IN ORDER TO PROPERLY ACTUATE THE COUNTER.
- ⁹ CRIMP HEIGHT REFERENCE SETTING WAS THE SETTING USED WHEN THE APPLICATOR WAS QUALIFIED AT THE FACTORY. ADJUSTMENT MAY BE NECESSARY WHEN RUNNING APPLICATOR IN THE FIELD.
- ¹⁰ SPARE FEED CAM STORAGE LOCATION REFER TO INSTRUCTION SHEET FOR ADDITIONAL INFORMATION.
- ¹¹ TO CONVERT THE APPLICATOR TO A NON-CARRIER CUTTING STYLE, REMOVE ITEM 13 AND ATTACH TO THE LOCATION ON THE BACK SIDE OF THE HOUSING. REFER TO INSTRUCTION SHEET FOR ADDITIONAL INFORMATION.
- ¹² WHEN ASSEMBLING A NON CRIMP HEIGHT ADJUST APPLICATOR (-6) USE SHIMS FROM ITEM 260 TO ACHIEVE A NOMINAL SHIM HEIGHT OF 4.65.
- ¹³ THIS APPLICATOR APPLIES TERMINAL WITH A SEAL. REFER TO CHART FOR INSULATION Ø.
- ¹⁴ APPLY TORO-SEAL IN ALLEN SOCKET TO FILL HOLE AFTER FLAT HD HAS BEEN ADJUSTED TO CORRECT HEIGHT AT QUALIFICATION. APPLY #1-23419-5 LOC-TITE TO THREADS.

***WARNING**
 ON INSTALLATION, SET WIRE DISC, ITEM 40 TO LARGEST WIRE SIZE SETTING. USE OF SETTINGS BELOW MINIMUM REQUIRED CRIMP HEIGHT SETTING WILL CAUSE DAMAGE TO CRIMP TOOLING.

-77	-7	-6	-5	-2	-1	PART NO	DESCRIPTION	ITEM NO
-	-	1	-	-	-	2119957-2	APPLICATOR SHIM PACK	260
-	1	-	1	1	1	8-21084-0	O-RING, .676 ID, .070 DIA. MAT.	252
-	-	-	-	1	-	2119640-1	PUSH ROD, AIR FEED	250

ATLANTIC VERSION
 Shown on sheets 1 of 4 & 2 of 4
 (Pacific version shown on sheets 3 of 4 & 4 of 4)

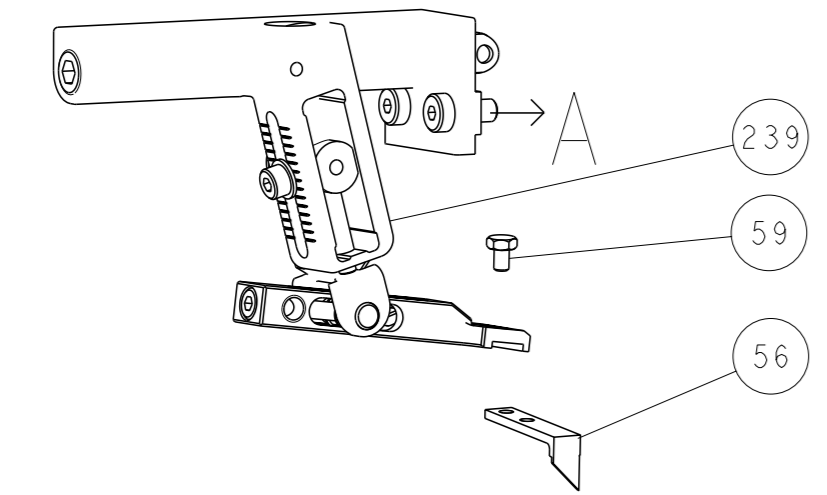
SET UP GAUGE	LOC	DIST	REVISIONS			
2119599-1	A	66	#	DATE	BY	APPV
			1	11FEB2014	GH	TE
			A	24MAR2014	GH	GB

#	DATE	BY	APPV	DESCRIPTION	DATE	BY	APPV
-	-	-	-	1	-	-	-
-	-	-	-	1	-	-	-
-	1	-	1	1	1	2079988-1	BUSHING, LCH5-12, MISUMI
-	-	-	-	1	-	2119641-1	FEED CAM, AIR FEED
-	1	-	1	1	1	2119798-1	DETENT PIN
-	1	-	1	1	1	1-22279-3	SPRING, COMPRESSION
-	-	1	-	-	-	2119758-1	RAM, AMP STYLE, SIDE FEED, NON-ADJ.
-	1	1	1	1	1	2119082-8	CAM, SNAIL, INSULATION ADJUSTMENT
-	1	1	1	1	1	2079764-1	WASHER, WAVE SPRING, CREST-TO-CREST
-	1	1	1	1	1	2119083-1	RETAINER, INSULATION DIAL
-	1	1	1	1	1	7-18023-7	SCR, SKT HD CAP M3 X 4.0
-	-	2	2	-	-	2168400-6	SHCS, LOW HEAD, RoHS, M5 X 16
-	-	-	-	-	-	2119580-1	MECHANICAL FEED ASSEMBLY
-	-	-	-	-	-	2063440-1	AIR FEED MODULE
-	-	1	1	-	-	2119740-2	TAG, IDENTIFICATION
-	-	1	1	-	-	1901094-3	SPACER, FEEDER
-	-	-	-	2	-	21045-3	RING, RETAIN, EXTERN, 3/16 CRESCENT
-	1	1	1	1	1	994969-1	MAGNET, RARE EARTH HIGH ENERGY
-	REF	REF	REF	REF	REF	994970-2	COUNTER, MAGNETIC
-	-	-	-	1	-	240638-1	SPRING, FEED FINGER
-	-	-	-	1	-	3-23627-7	PIN, RETAIN, GRVD, 3/16 X .854
-	-	-	-	1	-	2119799-1	HOLDER, FEED FINGER, AF
-	-	REF	REF	-	-	SEE NOTE 4	MEMORY CHIP, PROGRAMMED
-	-	1	1	-	-	1633743-1	SERVO FEED LATCH ASM
-	1	1	1	1	1	1-18028-2	WASHER, FLAT, REG M4
-	-	REF	REF	-	-	2119944-1	FEED FINGER ASSEMBLY, SF
-	1	1	1	1	1	455888-4	SPACER, CRIMPER
-	1	1	1	1	1	2119956-1	DOCUMENTATION PACKAGE
-	1	-	-	1	1	2119740-1	TAG, IDENTIFICATION
-	2	2	2	2	2	2168078-1	SCREW, DRIVE, RH, RoHS, 2 X .188
-	1	-	1	1	1	2119793-1	LIMITER, ADJUSTMENT BOLT
-	3	-	3	3	3	992763-5	SCR, SET, SOC, CONE POINT, M3 X 4.0
-	1	1	1	1	1	2079383-4	SCR, BHSC, RoHS (M4 X 8)
-	-	-	-	1	1	5-18022-5	SCR, HEX HD CAP, M4 X 6.0
-	1	1	1	1	1	985575-3	SCR, FLT SKT HD CAP M3 X 10.0
-	-	-	-	1	1	1338685-1	PAWL, FEED
-	4	4	4	4	4	2168400-1	SHCS, LOW HEAD, RoHS, M4 X 12
-	2	2	2	2	2	2168083-3	SCR, SKT HD CAP, RoHS, M4 X 12.0
-	1	1	1	1	1	5018030-1	NUT, HEX, REG, RoHS, M3
-	1	1	1	1	1	811242-5	BUMPER, HOLD DOWN
-	1	1	1	1	1	690753-2	SPACER, TONKER
-	-	-	-	1	2	18023-9	SCR, SKT HD CAP M4 X 6.0
-	-	-	-	-	1	2119652-1	FEED CAM, PRE FEED
-	-	-	-	-	1	2119653-1	FEED CAM, POST FEED
-	1	1	1	1	1	2119656-9	APPLICATOR BASIC ASSEMBLY, SF
-	1	-	1	1	1	2119370-1	RAM, AMP STYLE, SIDE FEED
-	1	1	1	1	1	2079383-7	SCR, BHSC, RoHS (M8 X 25)
-	1	-	1	1	1	2119645-1	DISC, NUMBERED FA WIRE ADJUSTMENT
-	1	-	1	1	1	2119957-1	APPLICATOR SHIM PACK
-	1	1	1	1	1	2119644-1	RAM WASHER, PRECISION
-	1	1	1	1	1	2119085-1	FA HEAD, ATLANTIC STYLE
-	1	-	1	1	1	2119092-1	BOLT, ADJUSTMENT
-	1	1	1	1	1	3-1752356-4	SUPPORT, TERMINAL
-	2	2	2	2	2	2079383-5	SCR, BHSC, RoHS (M4 X 20)
-	1	1	1	1	1	2161328-1	HEX HEAD, FLANGED, M5 X 8mm LONG
-	1	1	1	1	1	1-1320908-0	SPACER, STRIP GUIDE
-	1	1	1	1	1	2119959-1	ASSEMBLY, STRIP GUIDE
-	1	1	1	1	1	455888-3	SPACER, CRIMPER
-	1	1	1	1	1	1320928-2	STRIP GUIDE
-	1	1	1	1	1	2168083-2	SCR, SKT HD CAP, RoHS, M4 X 8.0
-	1	1	1	1	1	1-18028-2	WASHER, FLAT, REG M4
-	1	1	1	1	1	2119533-1	STRIPPER, SIDE FEED
-	1	1	1	1	1	2119806-1	INSERT, SHEAR
-	1	1	1	1	1	3-22280-3	SPRING, COMPRESSION
-	1	1	1	1	1	1-356885-4	STOP, SHEAR
-	1	1	1	1	1	2119805-1	SHEAR HOLDER, FRONT
-	1	1	1	1	1	318707-1	FLOATING SHEAR, FRONT
-	1	1	1	1	1	4-1633928-1	ANVIL, COMBINATION
-	1	1	1	1	1	4-240641-2	SPACER
-	-	-	-	-	-	-	-
-	1	1	1	1	1	2119781-1	DEPRESSOR, SHEAR
-	1	1	1	1	1	2-238011-2	BLOCK, CRIMPER SPACER
-	1	1	1	1	1	2119784-7	CRIMPER, INSULATION O PREMIUM
-	1	1	1	1	1	1-455888-0	SPACER, CRIMPER
-	1	1	1	1	1	1-456403-3	CRIMPER, WIRE PREMIUM

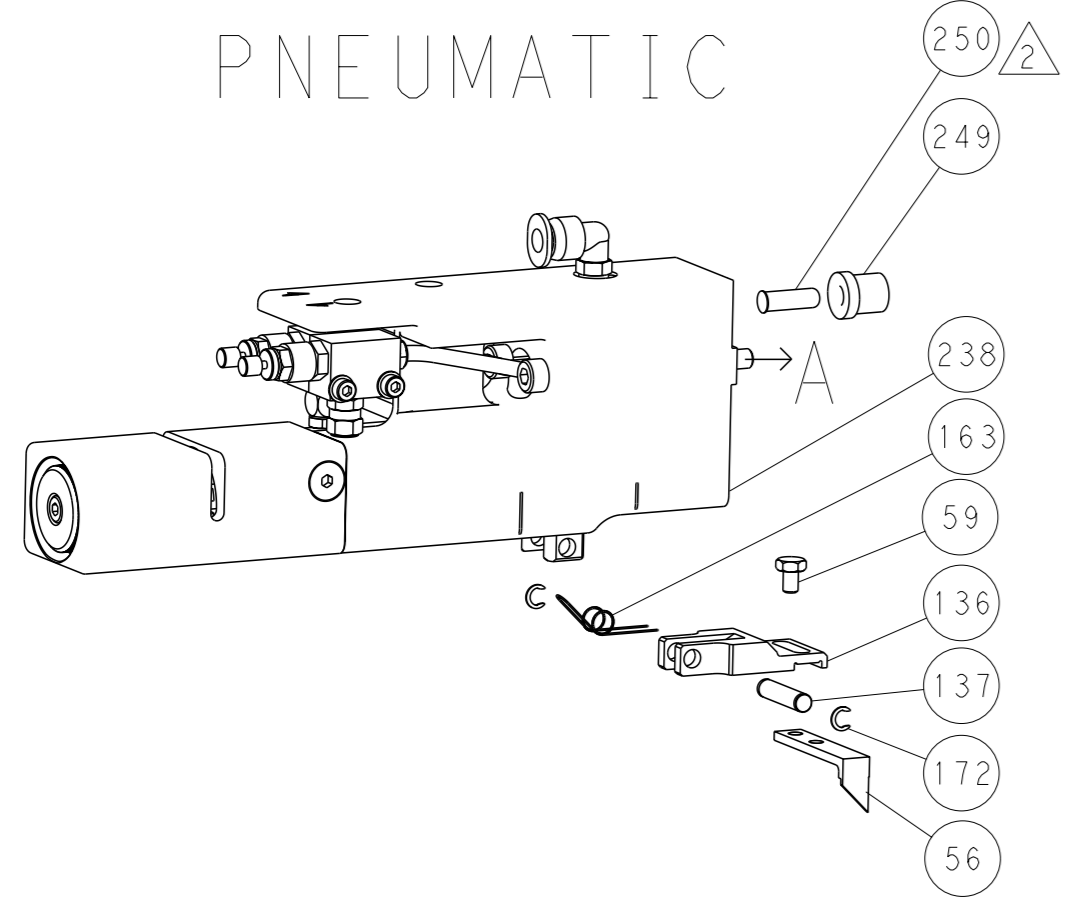
DIMENSIONS:		TOLERANCES UNLESS OTHERWISE SPECIFIED:		OWN	DATE	TE Connectivity	
mm	0 PLC ±.5	1 PLC ±0.5	2 PLC ±0.13	HOFFNER	11FEB2014	Harrisburg, PA 17105-3608	
	3 PLC ±0.013	4 PLC ±0.001	ANGLES ±.001	ELBIN	12FEB2014	Ocean Side Feed Applicator	
MATERIAL	FINISH	WEIGHT	SCALE	APV	DATE	NAME	RESTRICTED TO
			1:2		12FEB2014	Ocean Side Feed Applicator	
Customer Accessible Production Drawing				SCALE	SHEET	REV	
				1:2	1 of 4	A	

LOC	DIST	REVISIONS			
A	66	REV	DATE	OWN	APVD
-	-	SEE SHEET 1	-	-	-

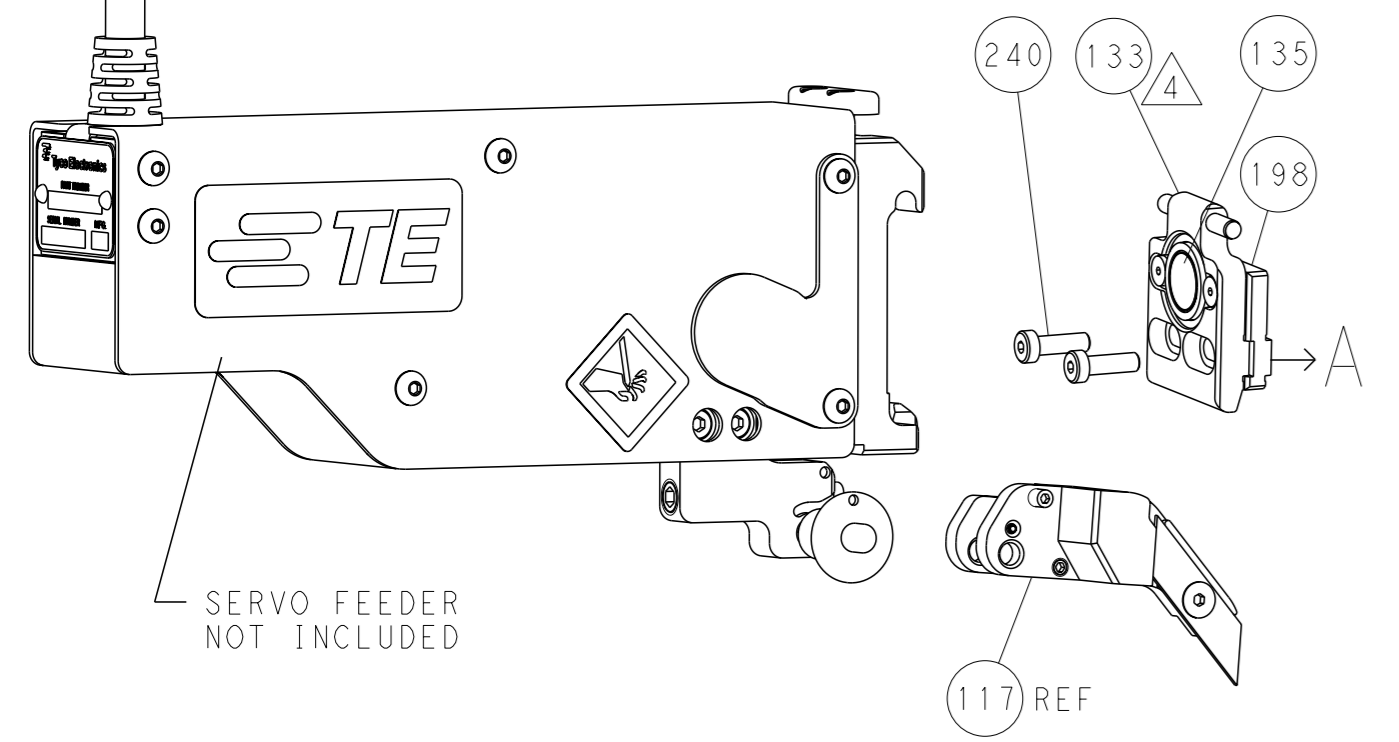
FEED TYPE MECHANICAL



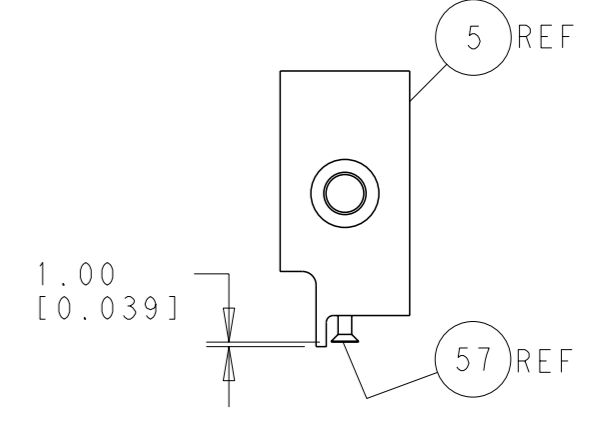
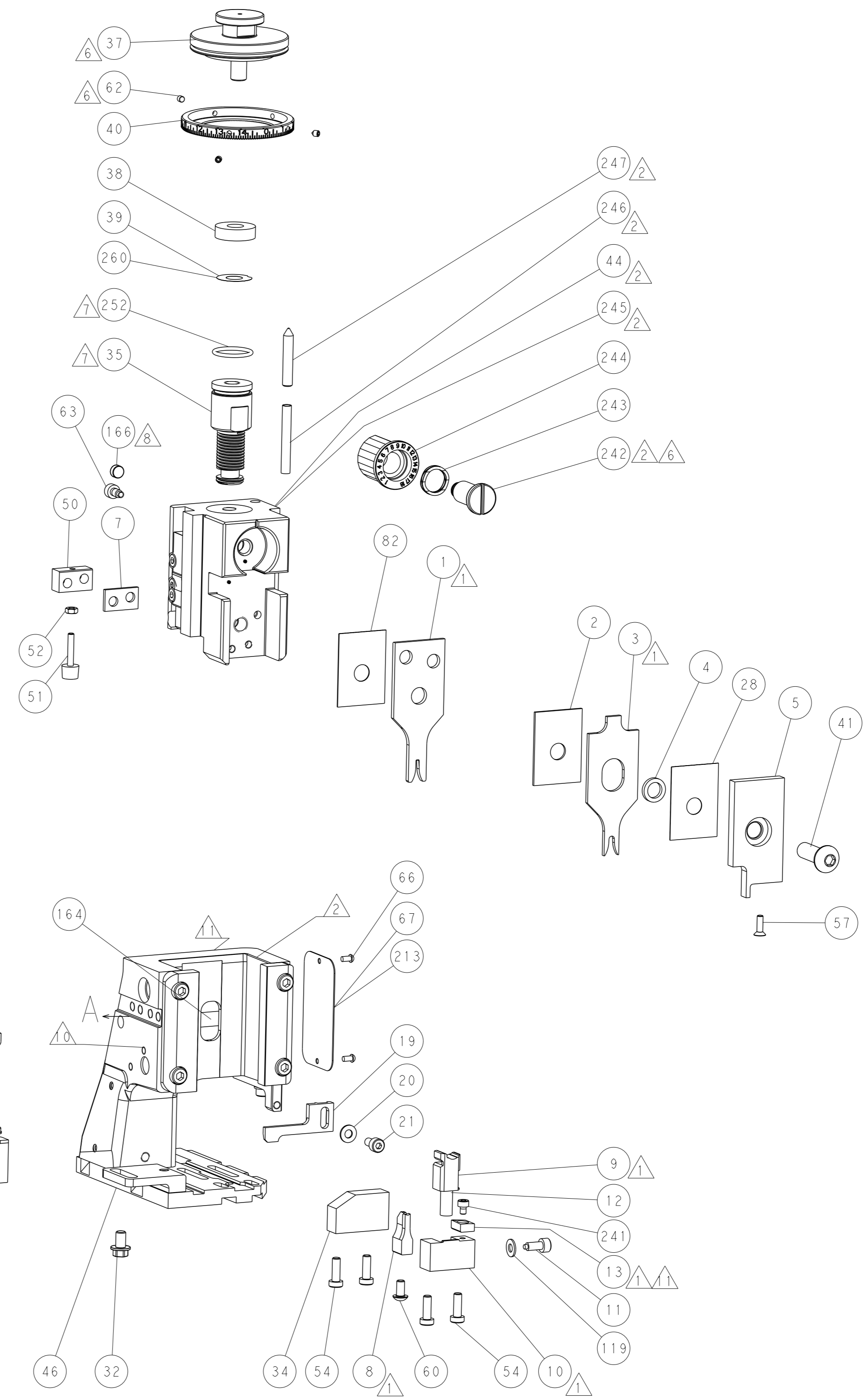
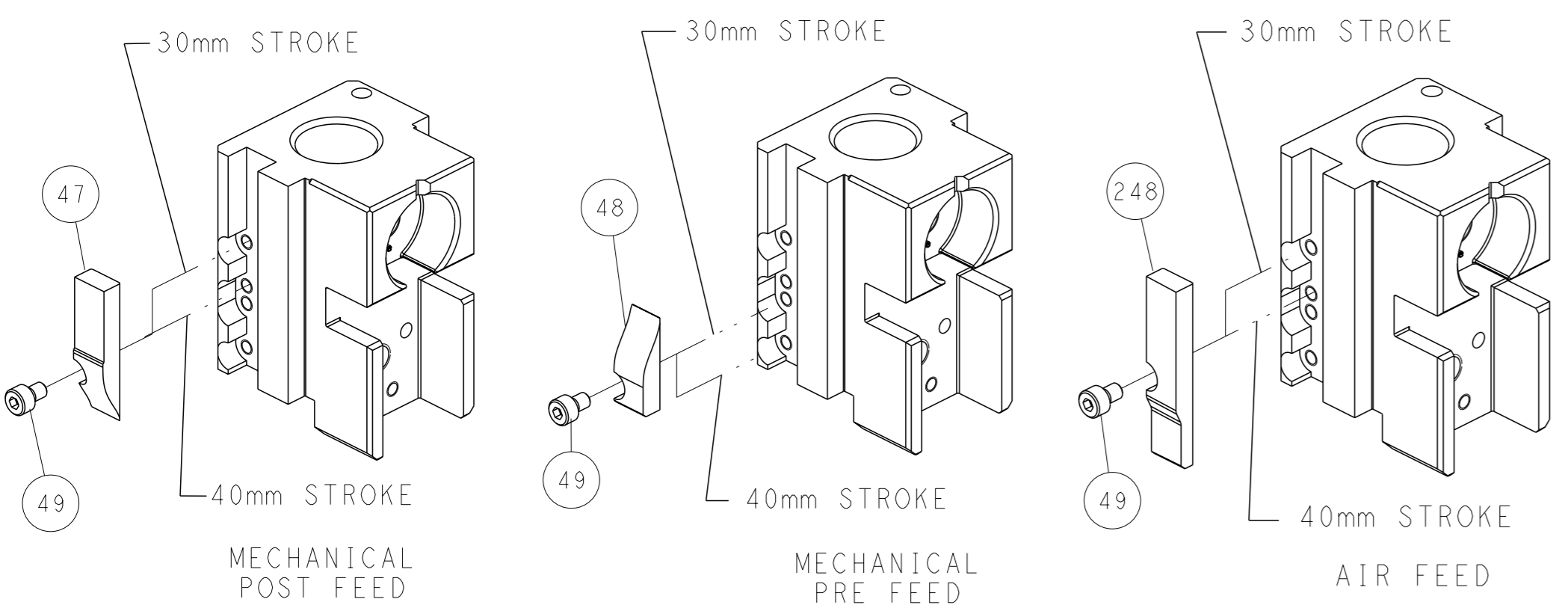
PNEUMATIC



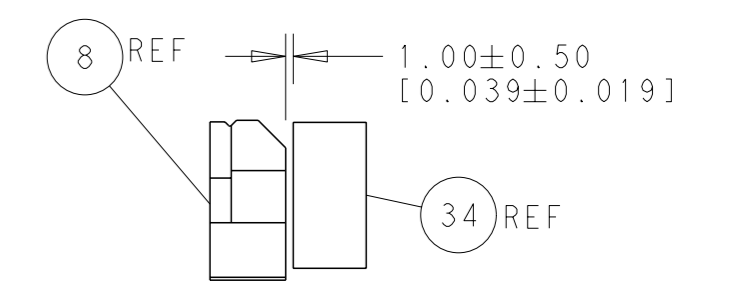
SERVO LATCH PLATE



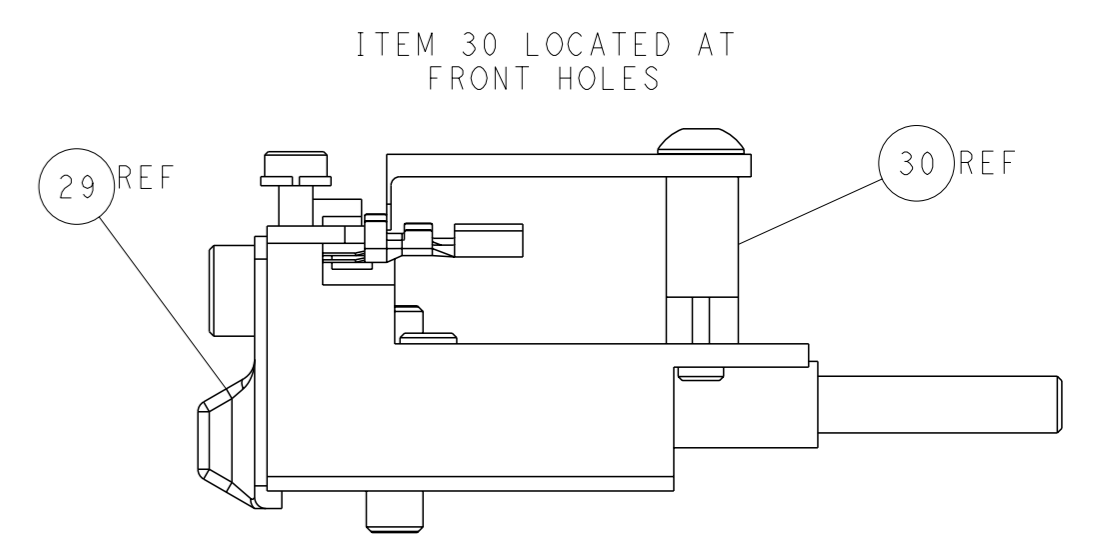
CAM POSITIONS



SHEAR DEPRESSOR DETAIL



TERMINAL SUPPORT LOCATION



FEED TRACK POSITION GUIDE BY INSULATION BARREL

ATLANTIC VERSION
 Shown on sheets 1 of 4 & 2 of 4
 (Pacific version shown on sheets 3 of 4 & 4 of 4)

<small>THIS DRAWING IS A CONTROLLED DOCUMENT FOR TYCO ELECTRONICS CORPORATION. IT IS SUBJECT TO CHANGE AND THE CONTROLLER'S ENGINEERING DEPARTMENT SHOULD BE CONTACTED FOR THE LATEST REVISION.</small>		OWN: HOFFNER 11FEB2014 CBY: T. ELBIN 12FEB2014 APVD: T. ELBIN 12FEB2014	TE Connectivity Harrisburg, PA 17105-3608
DIMENSIONS: mm TOLERANCES UNLESS OTHERWISE SPECIFIED: 0 PLC ±0.5 1 PLC ±0.13 2 PLC ±0.13 3 PLC ±0.001 4 PLC ±0.001 ANGLES ±0.001		NAME: Ocean Side Feed Applicator APPLICATION SPEC: - WEIGHT: - SCALE: 1:2	SIZE: A1 CAGE CODE: 00779 DRAWING NO: C=2266214 SHEET 2 of 4 REV A
MATERIAL: - FINISH: -		RESTRICTED TO: - Customer Accessible Production Drawing	

PACIFIC VERSION TERMINATOR INTERFACE ADAPTER	PART NUMBER	REVISION	DESCRIPTION	FEED TYPE	APPLICATOR STYLE CONVERSION CHART						
					CONVERT TO	PART NUMBERS REQUIRED					
	2-2266214-1	A	FINE CRIMP HEIGHT ADJUST	MECHANICAL	PNEUMATIC FEED	2119950-1	1338685-1	5-18022-5	2119641-2	2119799-1	2063440-1
					SERVO LATCH PLATE	2119951-1	-	8-2266214-5	1901094-3	-	2168400-6 (QUANTITY 2)
					SMART APPLICATOR	2161326-1	-	8-2266214-4	-	-	-
	2-2266214-2	A	FINE CRIMP HEIGHT ADJUST	PNEUMATIC	MECHANICAL FEED	2119949-1	1338685-1	5-18022-5	2119653-2	-	-
					SERVO LATCH PLATE	2119951-1	-	8-2266214-5	1901094-3	-	2168400-6 (QUANTITY 2)
					SMART APPLICATOR	2161326-1	-	8-2266214-4	-	-	-
	2-2266214-5	A	FINE CRIMP HEIGHT ADJUST	SERVO LATCH PLATE	MECHANICAL FEED	2119949-1	1338685-1	5-18022-5	2119653-2	-	-
					PNEUMATIC FEED	2119950-1	1338685-1	5-18022-5	2119641-2	2119799-1	2063440-1
	2-2266214-7	A	FINE CRIMP HEIGHT ADJUST	NONE	-	-	-	-	-	-	-
	7-2266214-7	A	CRIMP TOOLING KIT	-	-	-	-	-	-	-	-

APPLICATOR DATA		
CRIMP	SIZE	TYPE
WIRE	1.57 mm (.062)	F
INSUL	3.05 mm (.120)	O
APPLICATOR INSTRUCTIONS 408-10389		

TERMINAL DATA: DELPHI TERMINAL DELPHI CRIMP SPECIFICATION				
TERMINAL NAME: MICRO TERMINAL				
WIRE STRIP LENGTH	INSULATION DIAMETER RANGE			
3.25-4.01 mm (.128-.158 IN)	Ø 1.20-1.60mm			
TERMINAL APPLICATION SPECIFICATION	DELPHI CRIMP INFORMATION SHEET			
TERMINALS APPLIED				
TE TERMINAL	DELPHI TERMINAL	TE SEAL	DELPHI SEAL	INSULATION Ø
(A) 2113397-1	(A) 13580648	(A) 1949130-1	(A) 15327918	1.40-2.00mm
		(A) 1949130-2	(A) 15327913	1.20-1.60mm
		(A) 1949130-5	(A) 15344777	1.20-1.60mm
		(A) 1949130-6	(A) 15344778	1.40-2.00mm

WIRE SIZE	CRIMP HEIGHT mm [INCH]	CRIMP HEIGHT REFERENCE SETTING
0.75mm2	1.15+/-0.05 [1.045+/-0.002]	5.9
0.50mm2	1.05+/-0.05 [1.041+/-0.002]	6.9

- RECOMMENDED SPARE PARTS
- GREASE BEARING SURFACES LIGHTLY
- LUBRICATE DAILY PER THE APPLICATOR INSTRUCTION SHEET SUPPLIED WITH THE APPLICATOR.
- APPLICATOR SPECIFIC DATA TO BE ENTERED INTO BLANK MEMORY CHIP AT ASSEMBLY. SEE BELOW FOR PART NUMBER:
 MECHANICAL FEED WITH "SMART APPLICATOR" CONVERSION: 8-2266214-4
 PNEUMATIC FEED WITH "SMART APPLICATOR" CONVERSION: 8-2266214-4
 SERVO FEED WITH "FINE CRIMP HEIGHT ADJUST": 8-2266214-5
- ADJUSTMENT OF THE STRIPPER MAY BE REQUIRED WHEN MOVING THE APPLICATOR BETWEEN BENCH AND LEADMAKER APPLICATIONS.
- APPLY PART NUMBER 1-23419-5 LOCTITE TO THREADS OF ITEMS 62 & 242.
- GREASE THREADS, GROOVE AND O-RING ON ITEMS 139 & 152.
- MAGNET MUST BE ORIENTED CORRECTLY IN ORDER TO PROPERLY ACTUATE THE COUNTER.
- CRIMP HEIGHT REFERENCE SETTING WAS THE SETTING USED WHEN THE APPLICATOR WAS QUALIFIED AT THE FACTORY. ADJUSTMENT MAY BE NECESSARY WHEN RUNNING APPLICATOR IN THE FIELD.
- SPARE FEED CAM STORAGE LOCATION REFER TO INSTRUCTION SHEET FOR ADDITIONAL INFORMATION.
- TO CONVERT THE APPLICATOR TO A NON-CARRIER CUTTING STYLE, REMOVE ITEM 13 AND ATTACH TO THE LOCATION ON BACK SIDE OF THE HOUSING. REFER TO INSTRUCTION SHEET FOR ADDITIONAL INFORMATION.
- THIS APPLICATOR APPLIES TERMINAL WITH A SEAL. REFER TO CHART FOR INSULATION Ø.
- APPLY TORQ-SEAL IN ALLEN SOCKET TO FILL HOLE AFTER FLAT HD HAS BEEN ADJUSTED TO CORRECT HEIGHT AT QUALIFICATION. APPLY #1-23419-5 LOC-TITE TO THREADS.

***WARNING**
 ON INSTALLATION, SET WIRE DISC, ITEM 40 TO LARGEST WIRE SIZE SETTING. USE OF SETTINGS BELOW MINIMUM REQUIRED CRIMP HEIGHT SETTING WILL CAUSE DAMAGE TO CRIMP TOOLING.

-	1	1	1	1	2119782-1	FINE ADJUST HEAD ASM, PACIFIC STYLE	251
-77	-27	-25	-22	-21	PART NO	DESCRIPTION	ITEM NO

PACIFIC VERSION
 Shown on sheets 3 of 4 & 4 of 4
 (Atlantic version shown on sheets 1 of 4 & 2 of 4)

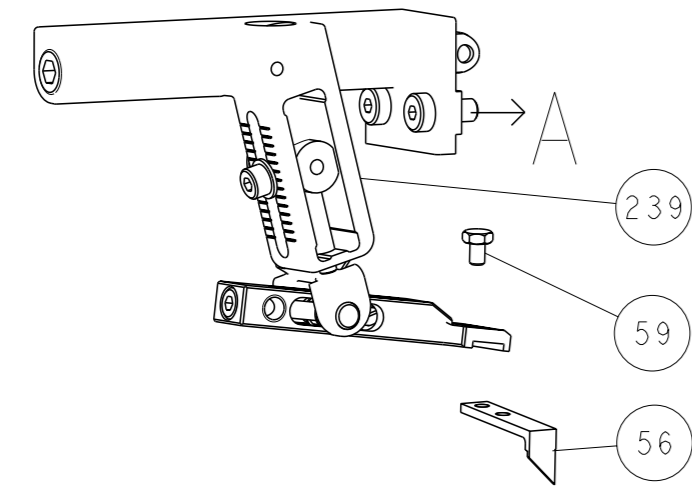
SET UP GAUGE	LOC	DIST	REVISIONS			
2119599-1	A	66	#	DATE	OWN	APVD
			-	SEE SHEET 1	-	-

-	-	-	1	-	2119640-1	PUSH ROD, AIR FEED	250
-	-	-	1	-	2079988-1	BUSHING, LCH5-12, MISUMI	249
-	1	1	1	1	1-22279-3	SPRING, COMPRESSION	246
-	1	1	1	1	2119082-8	CAM, SNAIL, INSULATION ADJUSTMENT	244
-	1	1	1	1	2079764-1	WASHER, WAVE SPRING, CREST-TO-CREST	243
-	1	1	1	1	2119083-1	RETAINER, INSULATION DIAL	242
-	1	1	1	1	7-18023-7	SCR, SKT HD CAP M3 X 4.0	241
-	-	-	2	-	2168400-6	SHCS, LOW HEAD, RoHS, M5 X 16	240
-	-	-	-	1	2119580-1	MECHANICAL FEED ASSEMBLY	239
-	-	-	-	1	2063440-1	AIR FEED MODULE	238
-	-	-	1	-	2119740-2	TAG, IDENTIFICATION	213
-	-	-	1	-	1901094-3	SPACER, FEEDER	198
-	-	-	2	-	21045-3	RING, RETAIN, EXTERN, 3/16 CRESCENT	172
-	1	1	1	1	994969-1	MAGNET, RARE EARTH HIGH ENERGY	166
-	REF	REF	REF	REF	994970-2	COUNTER, MAGNETIC	164
-	-	-	1	-	240638-1	SPRING, FEED FINGER	163
-	1	1	1	1	8-21084-1	O-RING, .801 ID, .070 DIA. MAT.	152
-	-	-	1	-	2119641-2	FEED CAM, AIR FEED	151
-	1	1	1	1	2119798-2	DETENT PIN	145
-	1	1	1	1	2079383-8	SCR, BHSC, RoHS (M4 X 16)	144
-	4	4	4	4	2168400-5	SHCS, LOW HEAD, RoHS, M4 X 20	143
-	-	-	-	1	2119653-2	FEED CAM, POST FEED	142
-	1	1	1	1	1-2119656-0	APPLICATOR BASIC ASSEMBLY, SF	141
-	1	1	1	1	2119650-1	RAM, ASIAN STYLE, SIDE FEED	140
-	1	1	1	1	2119092-2	BOLT, ADJUSTMENT	139
-	-	-	1	-	3-23627-7	PIN, RETAIN, GRVD, 3/16 X .854	137
-	-	-	1	-	2119799-1	HOLDER, FEED FINGER, AF	136
-	-	REF	-	-	SEE NOTE 4	MEMORY CHIP, PROGRAMMED	135
-	-	1	-	-	1633743-1	SERVO FEED LATCH ASM	133
-	1	1	1	1	1-18028-2	WASHER, FLAT, REG M4	119
-	-	REF	-	-	2119944-1	FEED FINGER ASSEMBLY, SF	117
-	1	1	1	1	455888-4	SPACER, CRIMPER	82
-	1	1	1	1	2119956-1	DOCUMENTATION PACKAGE	71
-	1	-	1	1	2119740-1	TAG, IDENTIFICATION	67
-	2	2	2	2	2168078-1	SCREW, DRIVE, RH, RoHS, 2 x .188	66
-	1	1	1	1	2119793-1	LIMITER, ADJUSTMENT BOLT	63
-	3	3	3	3	992763-5	SCR, SET, SOC, CONE POINT, M3 x 4.0	62
-	-	-	1	1	5-18022-5	SCR, HEX HD CAP, M4 X 6.0	59
-	1	1	1	1	985575-3	SCR, FLT SKT HD CAP M3 X 10.0	57
-	-	-	1	1	1338685-1	PAWL, FEED	56
-	2	2	2	2	2168083-3	SCR, SKT HD CAP, RoHS, M4 X 12.0	53
-	1	1	1	1	5018030-1	NUT, HEX, REG, RoHS, M3	52
-	1	1	1	1	811242-5	BUMPER, HOLD DOWN	51
-	1	1	1	1	690753-2	SPACER, TONKER	50
-	-	-	1	2	18023-9	SCR, SKT HD CAP M4 X 6.0	49
-	-	-	-	1	2119652-1	FEED CAM, PRE FEED	48
-	1	1	1	1	2079383-7	SCR, BHSC, RoHS (M8 X 25)	41
-	1	1	1	1	2119645-1	DISC, NUMBERED FA WIRE ADJUSTMENT	40
-	1	1	1	1	2119957-1	APPLICATOR SHIM PACK	39
-	1	1	1	1	2119644-1	RAM WASHER, PRECISION	38
-	1	1	1	1	3-1752356-4	SUPPORT, TERMINAL	34
-	2	2	2	2	2079383-5	SCR, BHSC, RoHS (M4 X 20)	33
-	1	1	1	1	2161328-1	HEX HEAD, FLANGED, M5 x 8mm LONG	32
-	1	1	1	1	1-1320908-0	SPACER, STRIP GUIDE	30
-	1	1	1	1	2119959-1	ASSEMBLY, STRIP GUIDE	29
-	1	1	1	1	455888-3	SPACER, CRIMPER	28
-	1	1	1	1	1320928-2	STRIP GUIDE	24
-	1	1	1	1	2168083-2	SCR, SKT HD CAP, RoHS, M4 X 8.0	21
-	1	1	1	1	1-18028-2	WASHER, FLAT, REG M4	20
-	1	1	1	1	2119533-1	STRIPPER, SIDE FEED	19
-	1	1	1	1	2119806-1	INSERT, SHEAR	13
-	1	1	1	1	3-22280-3	SPRING, COMPRESSION	12
-	1	1	1	1	1-356885-4	STOP, SHEAR	11
-	1	1	1	1	2119805-1	SHEAR HOLDER, FRONT	10
-	1	1	1	1	318707-1	FLOATING SHEAR, FRONT	9
-	1	1	1	1	4-1633928-1	ANVIL, COMBINATION	8
-	1	1	1	1	4-240641-2	SPACER	7
-	-	-	-	-	-	-	6
-	1	1	1	1	2119781-1	DEPRESSOR, SHEAR	5
-	1	1	1	1	2-238011-2	BLOCK, CRIMPER SPACER	4
-	1	1	1	1	2119784-7	CRIMPER, INSULATION O PREMIUM	3
-	1	1	1	1	1-455888-0	SPACER, CRIMPER	2
-	1	1	1	1	1-456403-3	CRIMPER, WIRE PREMIUM	1

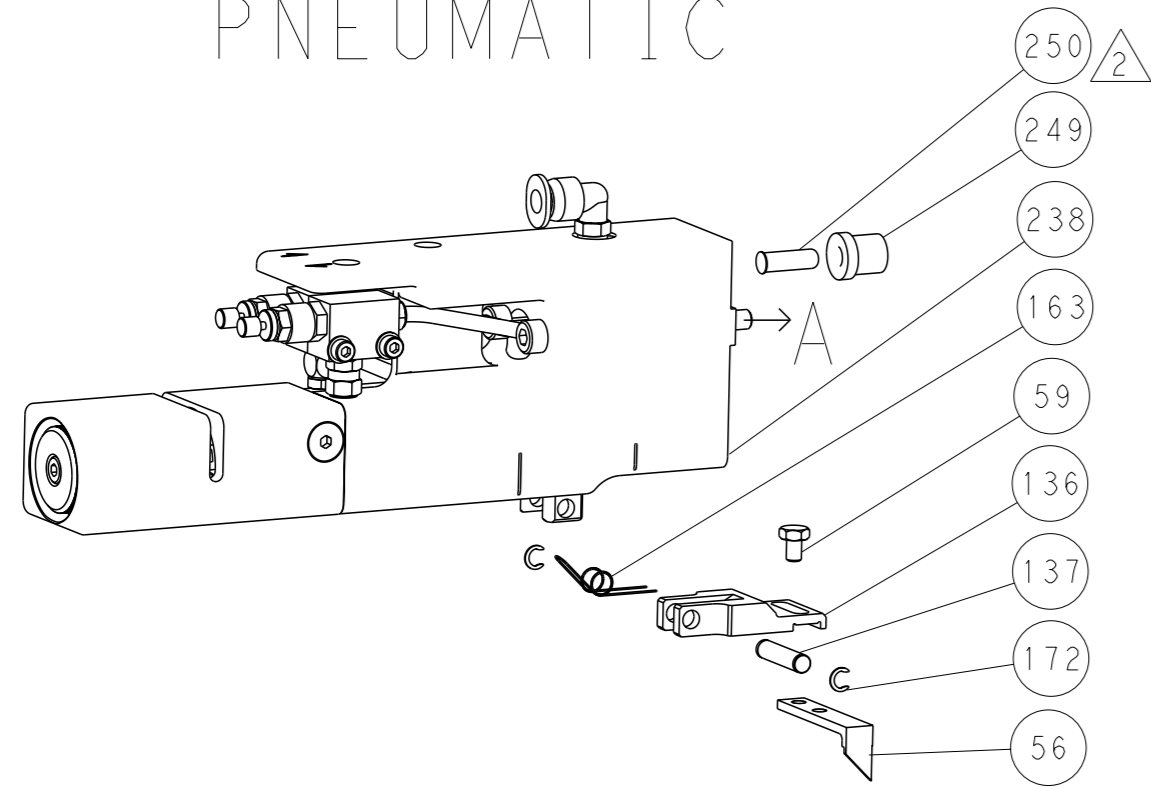
DIMENSIONS: mm		TOLERANCES UNLESS OTHERWISE SPECIFIED:		OWN: HOFFNER 11FEB2014	CHK: T. ELBIN 12FEB2014	TE Connectivity Harrisburg, PA 17105-3608	
		0 PLC ±.5	1 PLC ±0.5	APVD: T. ELBIN 12FEB2014	NAME: Ocean Side Feed Applicator		
MATERIAL:		2 PLC ±0.13	3 PLC ±0.001	APPLICATION SPEC:		SIZE: A1	CAGE CODE: 00779
FINISH:		4 PLC ±0.001	ANGLES:	WEIGHT:		DRAWING NO: C=2266214	RESTRICTED TO:
				Customer Accessible Production Drawing		SCALE: 1:2	SHEET 3 of 4 REV A

LOC		DIST		REVISIONS			
A	66	P	LYR	DESCRIPTION	DATE	OWN	APVD
		-		SEE SHEET 1			

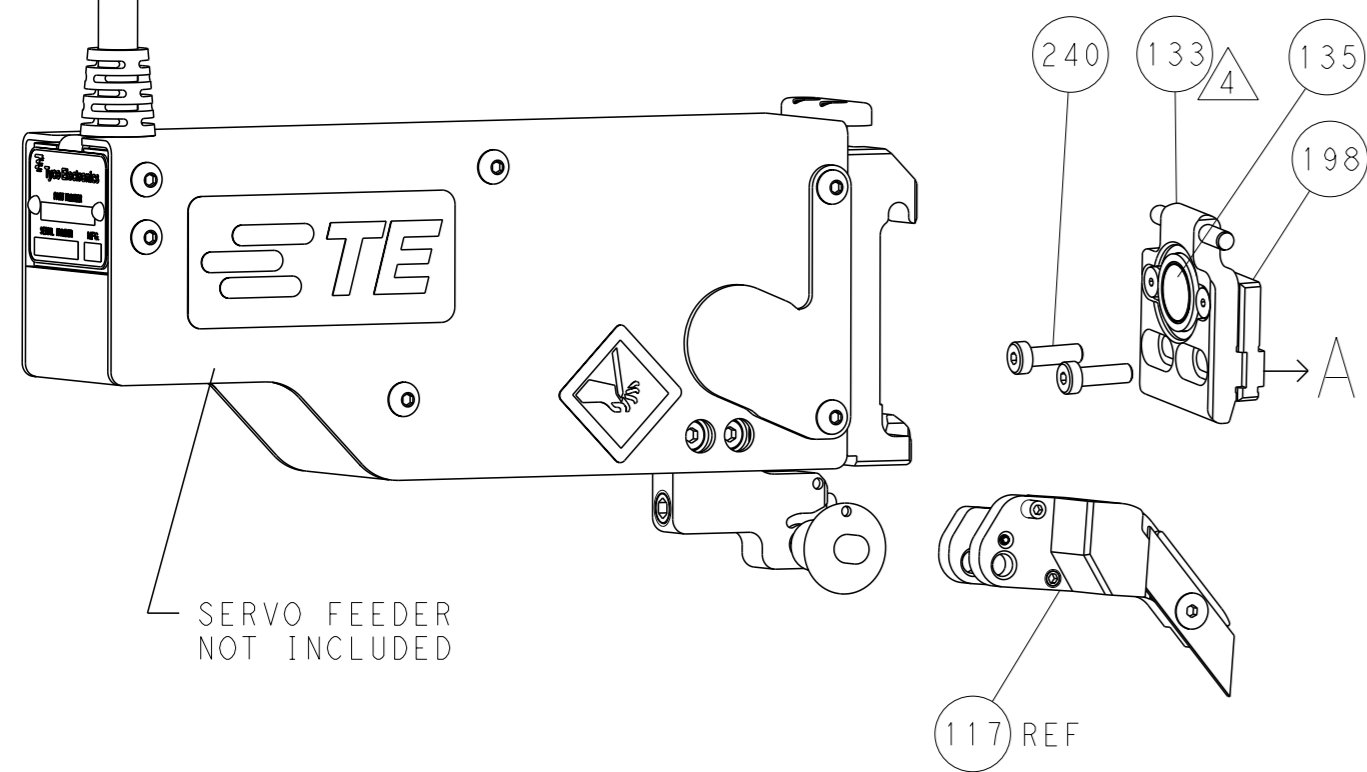
FEED TYPE MECHANICAL



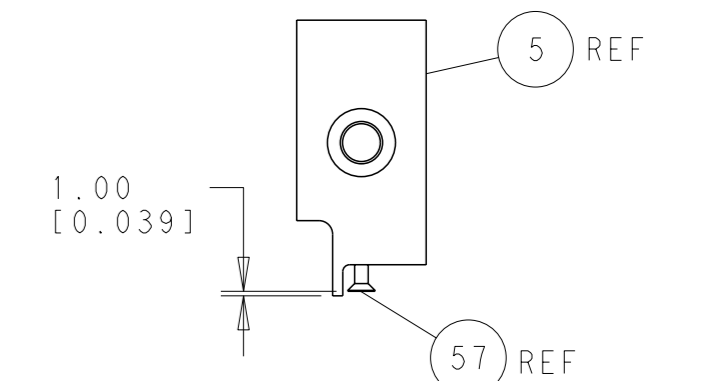
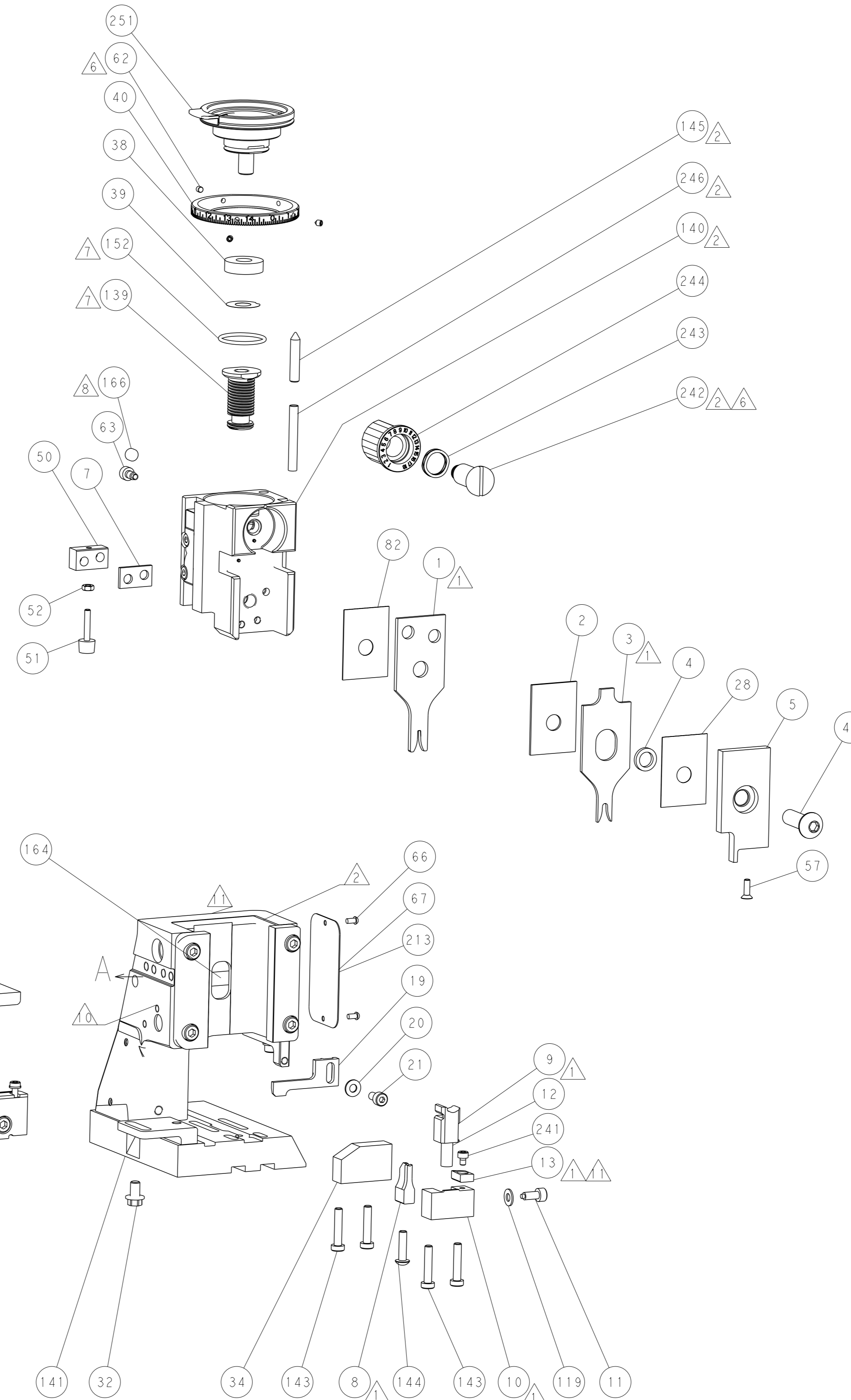
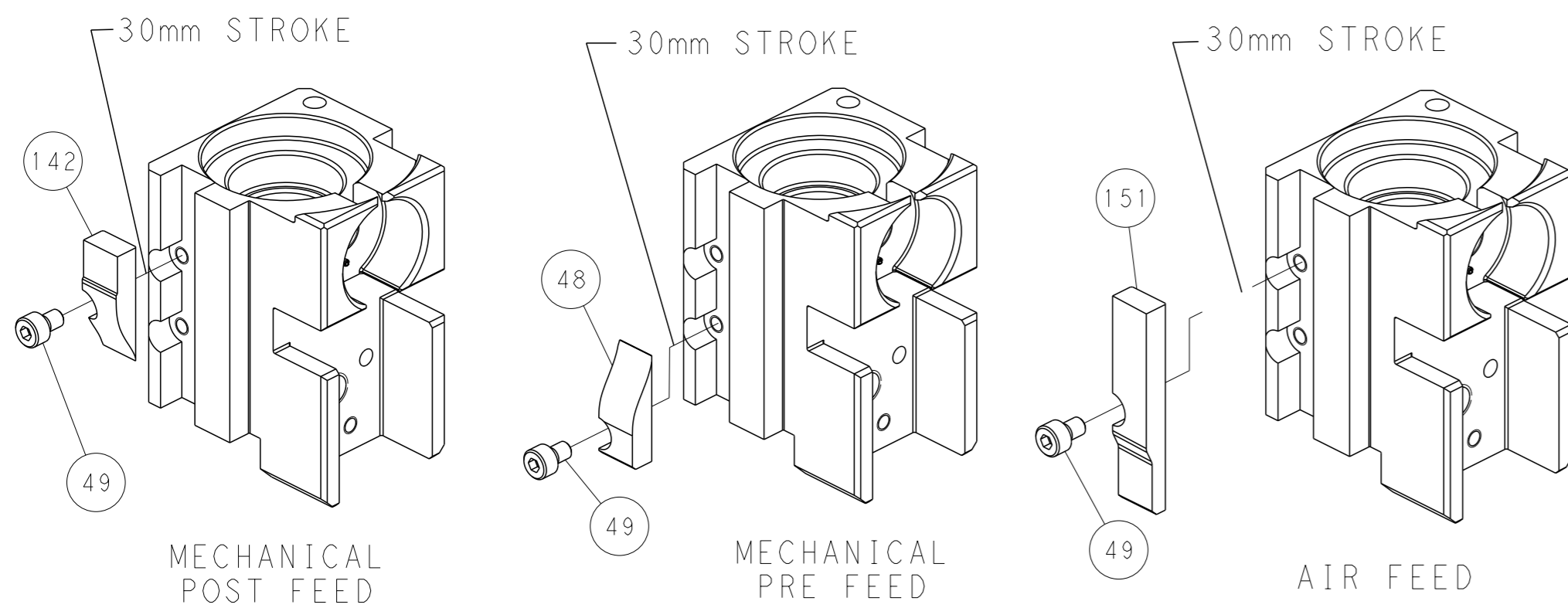
PNEUMATIC



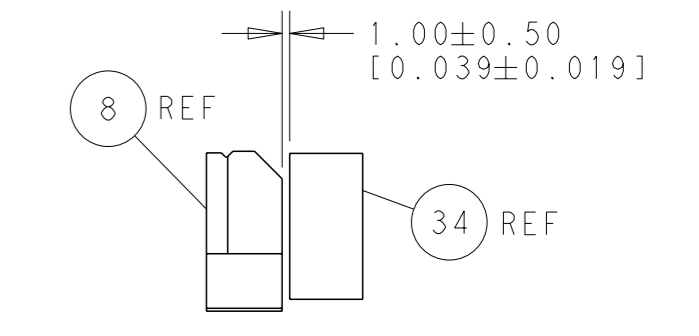
SERVO LATCH PLATE



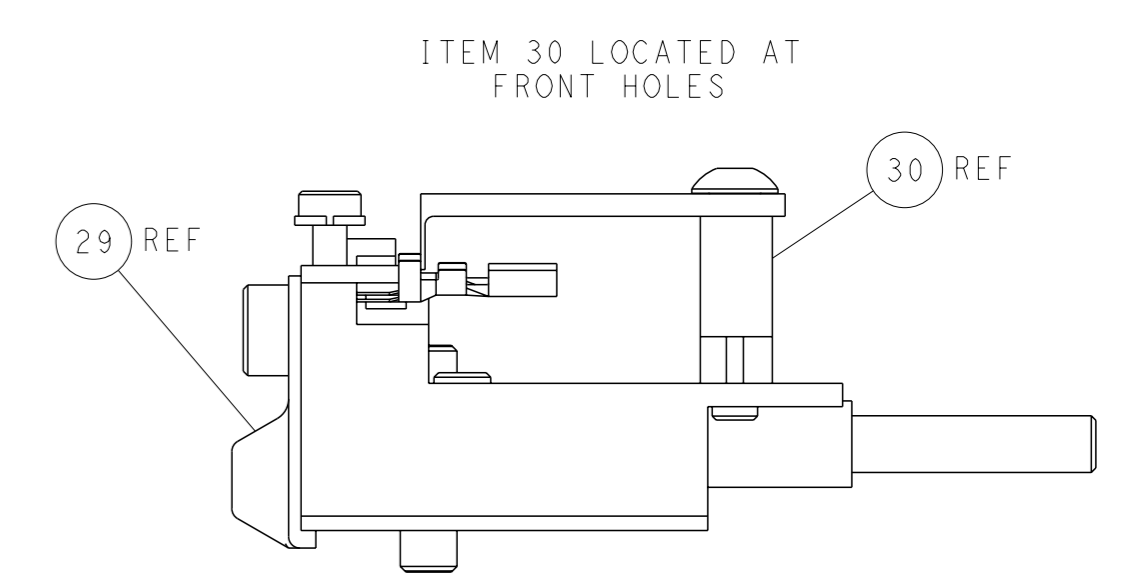
CAM POSITIONS



SHEAR DEPRESSOR DETAIL



TERMINAL SUPPORT LOCATION



FEED TRACK POSITION GUIDE BY INSULATION BARREL

PACIFIC VERSION
 Shown on sheets 3 of 4 & 4 of 4
 (Atlantic version shown on sheets 1 of 4 & 2 of 4)

<small>THIS DRAWING IS A CONTROLLED DOCUMENT FOR TYCO ELECTRONICS CORPORATION. IT IS SUBJECT TO CHANGE AND THE CONTROLLING ENGINEERING ORGANIZATION SHOULD BE CONTACTED FOR THE LATEST REVISION.</small>		DWN: HOFFNER 11FEB2014 CHK: TELBIN 12FEB2014 APVD: TELBIN 12FEB2014	TE Connectivity Harrisburg, PA 17105-3608
DIMENSIONS: mm TOLERANCES UNLESS OTHERWISE SPECIFIED: 0 PLC ±.5 1 PLC ±0.5 2 PLC ±0.13 3 PLC ±0.013 4 PLC ±0.001 ANGLES FINISH ±.	PRODUCT SPEC APPLICATION SPEC WEIGHT SCALE: 1:2	NAME: Ocean Side Feed Applicator SIZE: A1 CAGE CODE: 00779 DRAWING NO: C=2266214 SHEET: 4 of 4 REV: A	RESTRICTED TO: