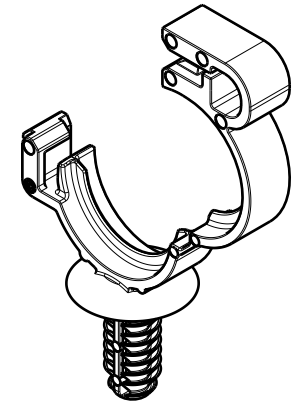
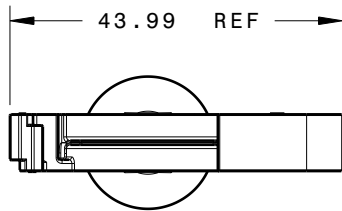


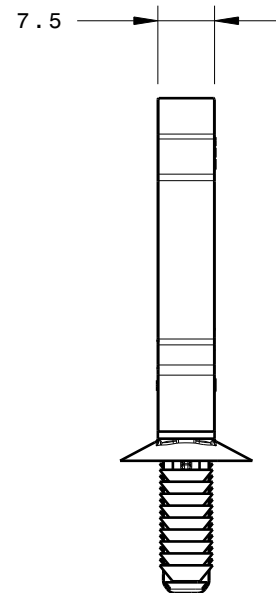
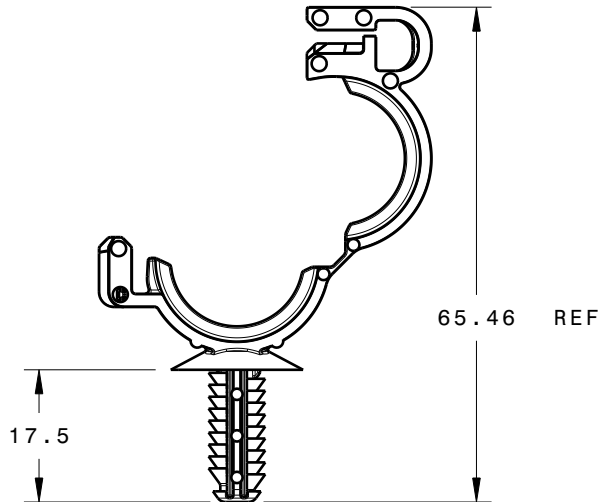
REFERENCE:

PERFORMANCE REQUIREMENTS AT DRY AS MOLDED:

1. FIR TREE PUSH IN FORCE: REF. 13 LBS MAX IN A 6.6mm HOLE AND A PLATE THICKNESS OF 1.8mm
2. FIR TREE PULL OUT FORCE: REF. 30 LBS MIN IN A 6.6mm HOLE AND A PLATE THICKNESS OF 1.8mm
3. SHEET METAL THICKNESS RANGE: 0.70mm - 12.7mm



Isometric View



INVENTORS

HellermannTyton[®]

ALL PROPRIETARY RIGHTS IN THE SUBJECT MATTER SHOWN ON THIS DRAWING ARE EXCLUSIVE PROPERTY OF HELLERMANNTYTON

name	date	city, state
S. ADAMS	6/25/07	MENOMONEE FALLS, WI.

REVISIONS

DR level	by	date	ECN #	part level
06	SJA	2/29/08	010975	D

DIMENSIONS

TOLERANCES	units
.XXXX = ± 0.25	millimeters
.XXX = ± 0.50	
.XX = ± 1.00	
.X = ± 2.00	
∠ = ± 0.50	
unless otherwise specified	

PART

number	CTCL16FT6LG	phase	PRODUCTION
name	16mm CONVOLUTED TUBING CLIP (6.65mm +/- 0.35 HOLE)		
material	NYLON 6/6, IMPACT MODIFIED, HEAT STABILIZED, UV RESISTANT COLOR: BLACK		

DRAWING

FORMAT	AH	CATIA V5	SCALE
VERSION	J		1:1
A- SIZE (landscape)_N01	previous drawing number		
drawn	S. ADAMS	A. Clark	approved
6/25/07	checked	08/09/07	approved
type	CUSTOMER	sheet 1 of 1	
number	MT07-016-001CST		