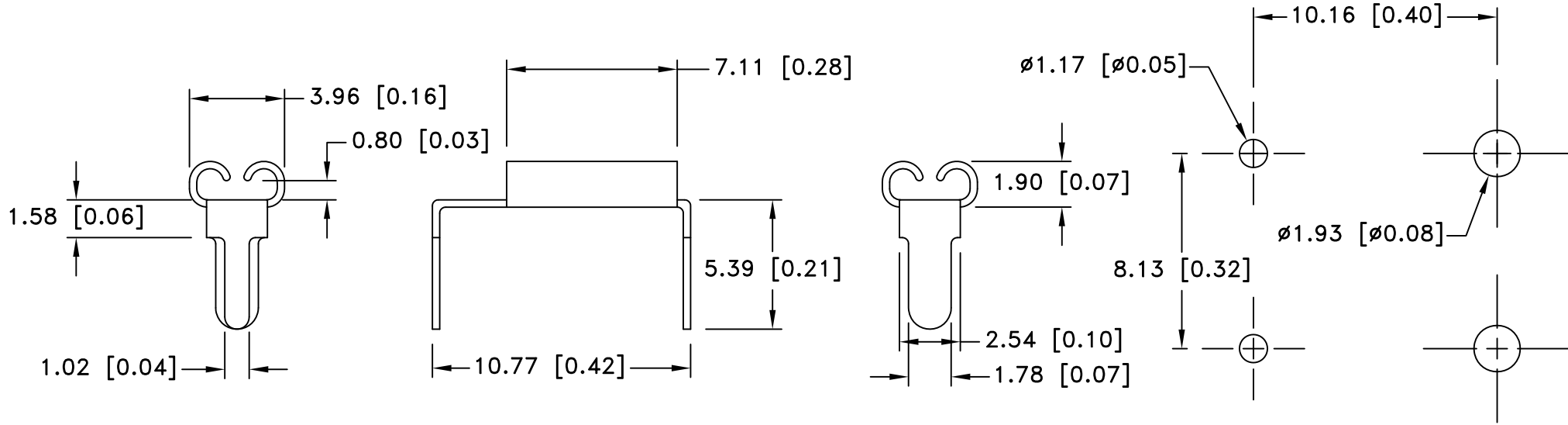


Date	SYM	REVISION RECORD	AUTH	DR.	CK.
7/08/06	A	Updated Drawing	T B	B S	
7/24/09	B	Added "ROHS COMPLIANT"	T B	B S	




**MOUNTING DETAIL FOR TWO CLIPS**

**NOTES:**

1. MATERIAL:  
.012" BRASS, NICKLE PLTD.

ROHS COMPLIANT

Tolerance (Except as noted)	 <b>Memory Protection Devices, Inc</b> 200 Broad Hollow Road, Farmingdale, New York 11735	Scale	Drawn By B.S.
			Approved By T.B.
decimal $\pm .5$ (.020)	Title AUTO FUSE CLIP FOR .110 x .032 MINI BLADE		
Fractional $\pm .8$ (.030)		Date 07/24/09	Drawing Number BK-6008
Angular $\pm 3^\circ$			