

NOTES:

1. MATERIALS AND FINISHES:

CONTACT - BRASS - GOLD PLATED
 BODY - BRASS - WHITE BRONZE PLATED
 SLEEVE - BRASS - WHITE BRONZE PLATED
 OUTER CONTACT - PHOSPHOR BRONZE - WHITE BRONZE PLATED
 FERRULE - COPPER ALLOY - WHITE BRONZE PLATED
 INSULATOR - PTFE

2. PHYSICAL:

A. OPERATING TEMPERATURE = -65°C to +165°C
 B. MATING CYCLES = 100 MIN.

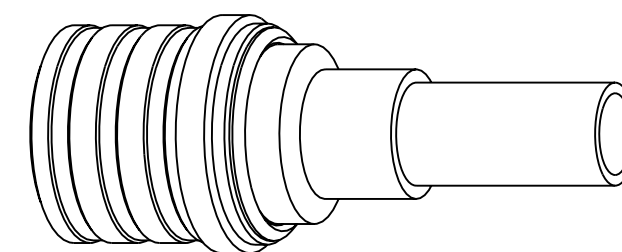
3. ELECTRICAL:

A. IMPEDENCE = 50 OHMS
 B. FREQUENCY RANGE = DC to 6 GHz
 C. VSWR = 1.05 : 1 MAX. DC-3 GHz
 = 1.12 : 1 MAX. 3-6 GHz

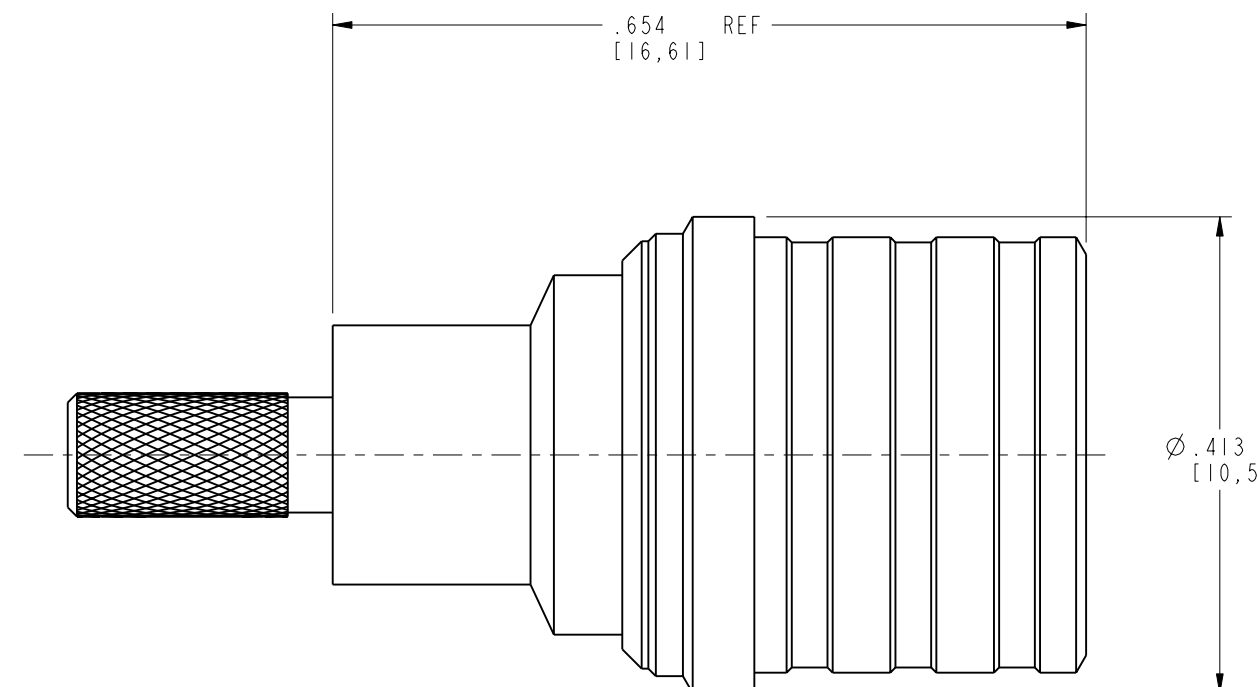
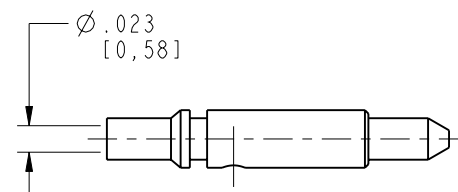
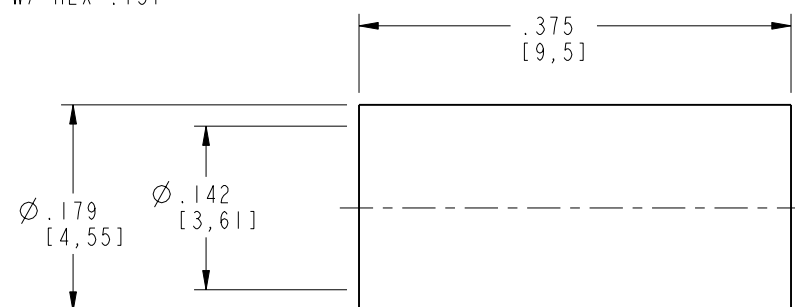
4. CABLE ASSEMBLY INSTRUCTIONS PER:

A. TRIM CABLE AS SHOWN
 B. CRIMP CONTACT W/ SQ. CRIMP SIZE .028, OR SOLDER
 C. INSERT CABLE UNTIL CONTACT LOCKS INTO PLACE
 D. CRIMP FERRULE W/ HEX .151

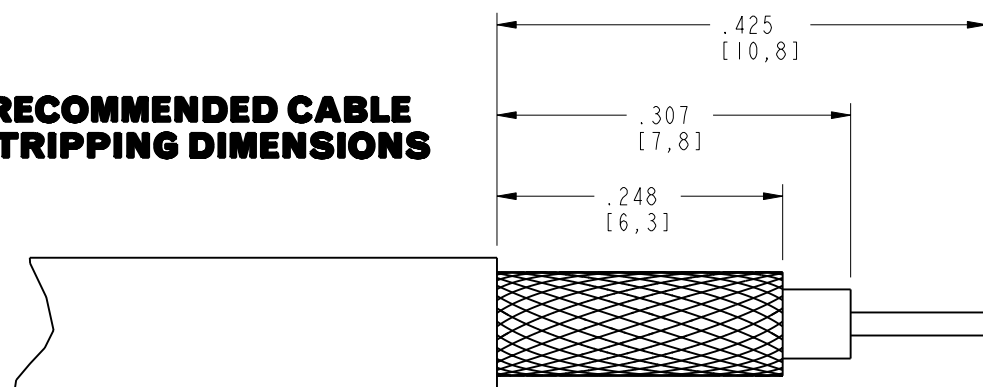
| | | | | | |
|-------------------|-----|-----------------|---------|-------|------|
| 930-115P-51S | | REVISIONS | | | |
| DRAWING NO. | REV | DESCRIPTION | DATE | ECO | APPR |
| THIRD ANGLE PROJ. | A | RELEASE TO MFG. | 7/19/04 | 45063 | |



SCALE 3.000



RECOMMENDED CABLE STRIPPING DIMENSIONS



CUSTOMER OUTLINE DRAWING
 ALL OTHER SHEETS ARE FOR INTERNAL USE ONLY

| | | | | | | | |
|---|---|---------------------------------|------------------|--|-----------------------------|--|----------|
| UNLESS OTHERWISE SPECIFIED, DIMENSIONS ARE IN INCHES AND TOLERANCES ARE: 2 PLACE DECIMAL ±.015 (0,381 mm) 3 PLACE DECIMAL ±.005 (0,127 mm) ANGLES ± 1° | MATERIAL | DRAWN K. CAPOZZI | DATE 3/25/03 | TITLE QMA 50 OHM PLUG FOR RD-316 CABLE | | Amphenol RF Danbury, CT, USA Tainan, Taiwan Shenzhen, China www.amphenolrf.com | |
| | REFERENCE EAR# 944 GEN# ASSYM3-QMA 615X-1913-100 | ENGINEER K. CAPOZZI | DATE 3/25/03 | | | | |
| NOTICE - These drawings, specifications, or other data (1) are, and remain the property of Amphenol Corp. (2) must be returned upon request; and (3) are confidential and not to be disclosed to any person other than those to whom they are given by Amphenol Corp. The furnishing of these drawings, specifications, or other data by Amphenol Corp., or to any other person to anyone for any purpose is not to be regarded by implication or otherwise in any manner licensing, granting rights or permitting such holder or any other person to manufacture, use or sell any product, process or design, patented or otherwise, that may in any way be related to or disclosed by said drawings, specifications, or other data. | | APPROVED O. BARTHELMES | DATE 7/16/04 | SCALE: 6.0:1 | SHEET 2 OF 2 | | |
| | | CAD FILE I:\QMA\930-115P-51S | CODE ID 74868 | DWG SIZE B | DRAWING NO. 930-115P-51S | | REV A |