

EMC filter - NEF 1- 6 - 2783082

Please be informed that the data shown in this PDF Document is generated from our Online Catalog. Please find the complete data in the user's documentation. Our General Terms of Use for Downloads are valid (<http://phoenixcontact.com/download>)




Mains interference filter, with universal foot for mounting on NS 32 and NS 35/7.5, nominal current: 6 A

Why buy this product

- For single-phase circuits
- DIN rail module



Key Commercial Data

Packing unit	5 STK
GTIN	 4 017918 069803
GTIN	4017918069803

Technical data

Dimensions

Height	79.4 mm
Width	40 mm
Depth	84.1 mm

Ambient conditions

Ambient temperature (operation)	-25 °C ... 100 °C (HMF)
---------------------------------	-------------------------

General

Housing material	PA
Flammability rating according to UL 94	V-2
Color	black
Standards for clearances and creepage distances	IEC 60664-1
	VDE 0110-1
Type	DIN rail module, one-piece
Mounting type	DIN rail: 35 mm

EMC filter - NEF 1- 6 - 2783082

Technical data

General

Number of positions	2
Direction of action	1L-N & N-PE

Protective circuit, filter

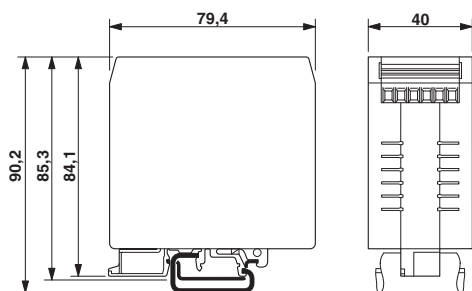
Discharge resistance	1 MΩ
----------------------	------

Environmental Product Compliance

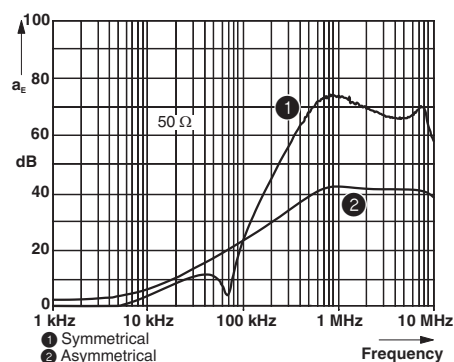
REACH SVHC	Lead 7439-92-1
China RoHS	Environmentally Friendly Use Period = 50
	For details about hazardous substances go to tab "Downloads", Category "Manufacturer's declaration"

Drawings

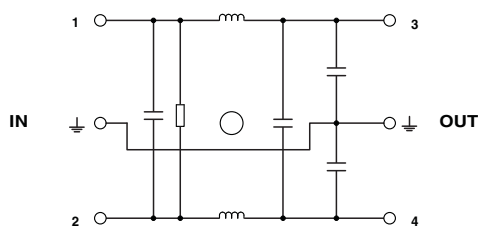
Dimensional drawing



Diagram



Circuit diagram



Approvals

Approvals

Approvals

VDE Zeichengenehmigung / GL / GL-SW / EAC / EAC / GL

EMC filter - NEF 1- 6 - 2783082

Approvals

Ex Approvals

Approval details

VDE Zeichengenehmigung		http://www2.vde.com/de/Institut/Online-Service/VDE-gepruefteProdukte/Seiten/Online-Suche.aspx	40008521
Nominal voltage UN	250 V		
Nominal current IN	6 A		
mm ² /AWG/kcmil	2.5		

GL		http://exchange.dnv.com/tari/	2427504 HH
----	--	---	------------

GL-SW	2427504 HH		
-------	------------	--	--

EAC		EAC-Zulassung	
-----	--	---------------	--

EAC		RU C- DE.A*30.B01561	
-----	--	-------------------------	--

GL			http://www.gl-group.com/newbuilding/approvals/index.html
----	--	--	---

Phoenix Contact 2018 © - all rights reserved
<http://www.phoenixcontact.com>

PHOENIX CONTACT GmbH & Co. KG
Flachsmarktstr. 8
32825 Blomberg
Germany
Tel. +49 5235 300
Fax +49 5235 3 41200
<http://www.phoenixcontact.com>