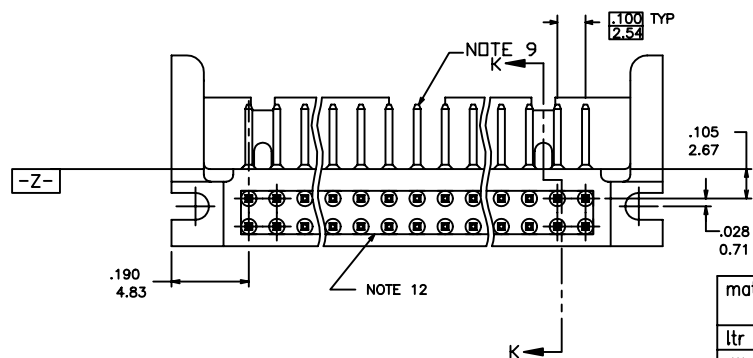
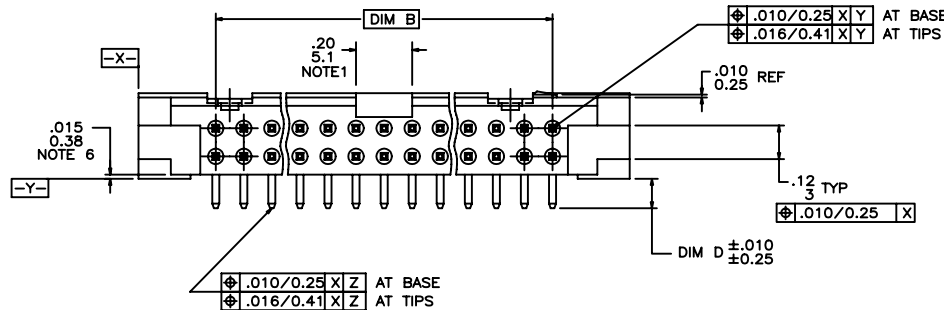
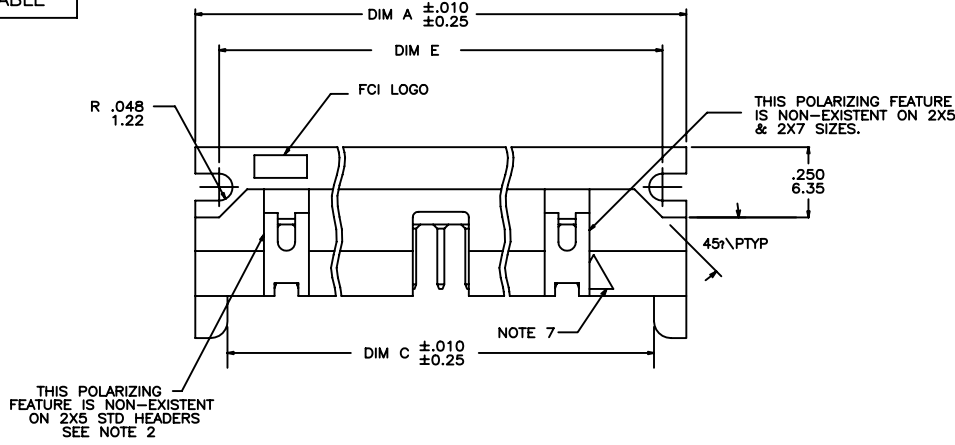


PRODUCT NO.
SEE TABLE



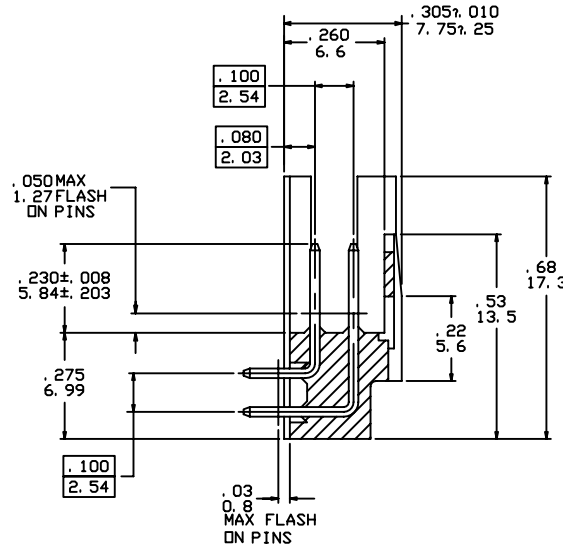
| | | | | | | | | | | |
|---------------------------|-------------------|---------|----------|--|-----------------------|----------|-------------------|--|--------------------|-----------------------|
| mat'l. code SEE NOTE 3 | | | | tolerances unless otherwise specified | | | CUSTOMER COPY | FCI www.fciconnect.com | | |
| ltr | ecn no | dr | date | linear | .xx ±.01/.x±.3 | | projection ↗ ↖ | title HEADER,QUICKIE SLIM LINE,RIGHT ANGLE | | |
| W | T10173 | MRC | 09/03/91 | | .xxx ±.005/.xx±.13 | | | product family QKE.HDR. code 213 | | |
| X | V04-0921 | PJ | 09/21/04 | angles | .xxx ±.0020/.xxx±.051 | | INCH/MM ↔ | size/ dwg no 65496 | | |
| Y | N05-0123 | ZC | 5/9/05 | | 0° ±2° | | | sheet 1 of 7 | | |
| AA | N07-0151 | WG | 7/26/07 | dr | P.JAYADEEP | 09/21/04 | scale 5:1 | A | sheet 1 of 7 | |
| | | | | enrg | H.SUNDY | 09/21/04 | | | | |
| | | | | chr | H.SUNDY | 09/21/04 | | | | |
| | | | | appd | H.SUNDY | 09/21/04 | | | | |
| sheet index | revision sheet | AA 1 | AA 2 | AA 3 | AA 4 | AA 5 | AA 6 | AA 7 | cage code 22526 | Printed: Apr 12, 2011 |

Tous droits strictement reserves. Reproduction ou communication a des tiers interdite sous quelque forme que ce soit sans autorisation ecrite du proprietaire. Propriete de c FCI. Droits de reproduction FCI.

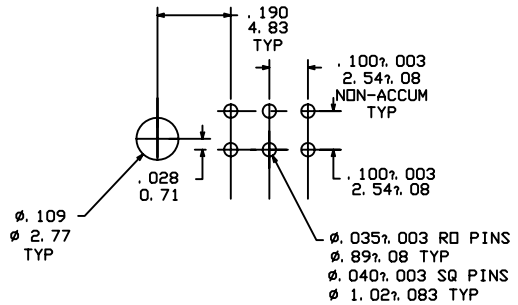


All rights strictly reserved. Reproduction or issue to third parties in any form whatever is not permitted without written authority from the proprietor. Property of FCI. Copyright FCI.

PRODUCT NO.
SEE TABLE



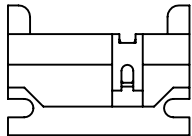
SECTION K-K
SCALE 8/1



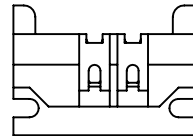
RECOMMENDED HOLE PATTERN
SCALE 10/1

NOTES:

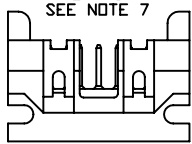
- ① POLARIZING SLOT NON-EXISTENT ON STYLE A 2 X 5 ONLY.
- ② STD. 2 X 5 HEADERS WILL HAVE NO DESIGNATION IN CHART. STYLE A 2 X 5 HEADERS WILL BE DESIGNATED STYLE A IN CHARTS.
- ③ MOLDING MAT'L: GLASS FILLED POLYESTER, FLAME RETARDANT PER UL94, V-0. COLOR - BLUE.
4. 1° MAX DRAFT PERMISSIBLE ON ALL SURFACES UNLESS OTHERWISE INDICATED.
5. .37/9.4 MAX DIM FROM MOUNTING SLOT TO EDGE OF BOARD FOR DIASY CHAIN.
- ⑥ .015/.38 STANDOFF LOCATED APPROX AS SHOWN.
- ⑦ ARROW IDENTIFICATION DENOTING PIN#1 POSITION.
8. PIN MAT'L: PHOS. BRONZE UNS-C51000.
- ⑨ OPTIONAL PLATING ON LEAD -IN OF PINS.
- ⑩ RECOMMENDED MOUNTING SCREW SIZE #2-56 X 3/8 LG FILLISTER HEAD MACHINE SCREW FOR 1/16, 3/32, & 1/8 BOARDS.
- ⑪ TAIL TIPS TO BE TIN LEAD DIPPED, DIP LENGTH TO BE DIM "D" MINUS .02/.05 MAX. 100u"/2.54um MIN.
- ⑫ CORING OPTIONAL FOR MANUFACTURING AROUND TERMINAL TAILS.
13. 65496-***LF IS JUST A LEAD FREE PRODUCT.
14. THE HOUSING OF XXXXX-XYLF WILL WITHSTAND EXPOSURE TO 260°C PEAK TEMPERATURE FOR 10 SECONDS IN A WAVE SOLDER PROCESS.
15. PLATING OPTION : MAYBE EITER GOLD OR GXT PLATING AT MANUFACTURER SITE



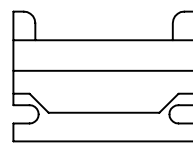
STYLE A
2 X 5
SEE NOTE 7



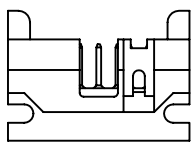
STYLE C



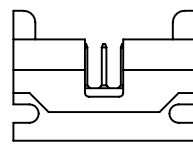
2 X 8 OR MORE PINS
STYLE B



STYLE D



STANDARD 2 X 7
STYLE B



STANDARD 2 X 5
STYLE B

Tous droits strictement reserves. Reproduction ou communication a des tiers interdite sous quelque forme que ce soit sans autorisation ecrite du proprietaire. Propriete de c FCI. Droits de reproduction FCI.



All rights strictly reserved. Reproduction or issue to third parties in any form whatever is not permitted without written authority from the proprietor. Property of FCI. Copyright FCI.

| | | | | | | | |
|-------------|----------|---------------------------------------|------|-----------------------|------------|------------------------|--------|
| mat'l. code | | tolerances unless otherwise specified | | CUSTOMER COPY | | FCI | |
| - | | .XX ±.01/.X±.3 | | www.fciconnect.com | | | |
| ltr | ecn no | dr | date | linear | projection | title | |
| AA | | | | .XXX ±.005/.XX±.13 | INCH/MM | HEADER, QUICKIE | |
| | | | | .XXX ±.0020/.XXX±.051 | 5:1 | SLIM LINE, RIGHT ANGLE | |
| | | | | angles | | product family | code |
| | | | | dr | P.JAYADEEP | QKE.HDR. | 213 |
| | | | | enr | H.SUNDY | size | dwg no |
| | | | | chr | H.SUNDY | 65496 | 2 of 7 |
| | | | | appd | H.SUNDY | | |
| sheet | revision | | | | | | |
| index | sheet | | | | | | |

Tous droits strictement reserves. Reproduction ou communication a des tiers interdite sous quelque forme que ce soit sans autorisation ecrite du proprietaire. Propriete de c FCI. Droits de reproduction FCI.



All rights strictly reserved. Reproduction or issue to third parties in any form whatever is not permitted without written authority from the proprietor. Property of FCI. Copyright FCI.

| PRODUCT NO. | SIZE | STYLE | DIM A | DIM B | DIM C | DIM D | DIM E | TERM CONFIG | TERMINAL PLATING NOTE 15 |
|-------------|--------|-------|------------|-------------|------------|------------|------------|-------------|-------------------------------|
| 65496-001 | 2 X 5 | B | .95/24.13 | .400/10.16 | .72/18.29 | .105/2.67 | .78/19.81 | ROUND | 30u"/.76um Au- 50u"/1.27um Ni |
| -002 | | | | | | .150/3.81 | | SQ | 150u"/3.81um TIN |
| -003 | | | | | | .675/17.15 | | SQ | 30u"/.76um Au- 50u"/1.27um Ni |
| -004 | | | | | | .105/2.67 | | SQ | 150u"/3.81um TIN |
| -005 | | | | | | .150/3.81 | | ROUND | 30u"/.76um Au- 50u"/1.27um Ni |
| -006 | 2 X 5 | | .95/24.13 | .400/10.16 | .72/18.29 | .675/17.15 | .78/19.81 | SQ | 150u"/3.81um TIN |
| -007 | 2 X 10 | | 1.45/36.83 | .900/22.86 | 1.22/30.99 | .105/2.67 | 1.28/32.51 | ROUND | 30u"/.76um Au- 50u"/1.27um Ni |
| -008 | | | | | | .150/3.81 | | SQ | 150u"/3.81um TIN |
| -009 | | | | | | .675/17.15 | | SQ | 30u"/.76um Au- 50u"/1.27um Ni |
| -010 | | | | | | .105/2.67 | | SQ | 150u"/3.81um TIN |
| -011 | | | | | | .150/3.81 | | ROUND | 30u"/.76um Au- 50u"/1.27um Ni |
| -012 | 2 X 10 | | 1.45/36.83 | .900/22.86 | 1.22/30.99 | .675/17.15 | 1.28/32.51 | SQ | 150u"/3.81um TIN |
| -013 | 2 X 13 | | 1.75/44.45 | 1.200/30.48 | 1.52/38.61 | .105/2.67 | 1.58/40.13 | ROUND | 30u"/.76um Au- 50u"/1.27um Ni |
| -014 | | | | | | .150/3.81 | | SQ | 150u"/3.81um TIN |
| -015 | | | | | | .675/17.15 | | SQ | 30u"/.76um Au- 50u"/1.27um Ni |
| -016 | | | | | | .105/2.67 | | SQ | 150u"/3.81um TIN |
| -017 | | | | | | .150/3.81 | | ROUND | 30u"/.76um Au- 50u"/1.27um Ni |
| -018 | 2 X 13 | | 1.75/44.45 | 1.200/30.48 | 1.52/38.61 | .675/17.15 | 1.58/40.13 | SQ | 150u"/3.81um TIN |
| -019 | 2 X 17 | | 2.15/54.61 | 1.600/40.64 | 1.92/48.77 | .105/2.67 | 1.98/50.29 | ROUND | 30u"/.76um Au- 50u"/1.27um Ni |
| -020 | | | | | | .150/3.81 | | SQ | 150u"/3.81um TIN |
| -021 | | | | | | .675/17.15 | | SQ | 30u"/.76um Au- 50u"/1.27um Ni |
| -022 | | | | | | .105/2.67 | | SQ | 150u"/3.81um TIN |
| -023 | | | | | | .150/3.81 | | ROUND | 30u"/.76um Au- 50u"/1.27um Ni |
| -024 | 2 X 17 | | 2.15/54.61 | 1.600/40.64 | 1.92/48.77 | .675/17.15 | 1.98/50.29 | SQ | 150u"/3.81um TIN |
| -025 | 2 X 20 | | 2.45/62.23 | 1.900/48.26 | 2.22/56.39 | .105/2.67 | 2.28/57.91 | ROUND | 30u"/.76um Au- 50u"/1.27um Ni |
| -026 | | | | | | .150/3.81 | | SQ | 150u"/3.81um TIN |
| -027 | | | | | | .675/17.15 | | SQ | 30u"/.76um Au- 50u"/1.27um Ni |
| -028 | | | | | | .105/2.67 | | SQ | 150u"/3.81um TIN |
| -029 | | | | | | .150/3.81 | | ROUND | 30u"/.76um Au- 50u"/1.27um Ni |
| -030 | 2 X 20 | | 2.45/62.23 | 1.900/48.26 | 2.22/56.39 | .675/17.15 | 2.28/57.91 | SQ | 150u"/3.81um TIN |
| -031 | 2 X 25 | | 2.95/74.93 | 2.400/60.96 | 2.72/69.09 | .105/2.67 | 2.78/70.61 | ROUND | 30u"/.76um Au- 50u"/1.27um Ni |
| -032 | | | | | | .150/3.81 | | SQ | 150u"/3.81um TIN |
| -033 | | | | | | .675/17.15 | | SQ | 30u"/.76um Au- 50u"/1.27um Ni |
| -034 | | | | | | .105/2.67 | | SQ | 150u"/3.81um TIN |
| 65496-035 | 2 X 25 | B | 2.95/74.93 | 2.400/60.96 | 2.72/69.09 | .150/3.81 | 2.78/70.61 | ROUND | 30u"/.76um Au- 50u"/1.27um Ni |

| | | | | | | | |
|-------------|----------------|---------------------------------------|------|---------------|------------------------|------------|-----------------------|
| mat'l. code | | tolerances unless otherwise specified | | CUSTOMER COPY | | | |
| ltr | ecn no | dr | date | linear | .XX ±.01/.X±.3 | projection | www.fciconnect.com |
| AA | | | | angles | .XXX ±.005/.XX±.13 | | title |
| | | | | dr | .XXXX ±.0020/.XXX±.051 | INCH/MM | HEADER,QUICKIE |
| | | | | enr | 0' ±2' | scale | SLIM LINE,RIGHT ANGLE |
| | | | | chr | | 5:1 | product family |
| | | | | appd | | | QKE.HDR. |
| sheet index | revision sheet | | | | | | code |
| | | | | | | | 213 |
| | | | | | | | sheet |
| | | | | | | | 3 of 7 |

Tous droits strictement reserves. Reproduction ou communication a des tiers interdite sous quelque forme que ce soit sans autorisation ecrite du proprietaire. Propriete de c FCI. Droits de reproduction FCI.



All rights strictly reserved. Reproduction or issue to third parties in any form whatever is not permitted without written authority from the proprietor. Property of FCI. Copyright FCI.

| PRODUCT NO. | SIZE | STYLE | DIM A | DIM B | DIM C | DIM D | DIM E | TERM CONFIG | TERMINAL PLATING NOTE 15 |
|-------------|--------|-------|------------|-------------|------------|------------|------------|-------------|-------------------------------|
| 65496-036 | 2 X 25 | B | 2.95/74.93 | 2.400/50.96 | 2.72/69.09 | .675/17.15 | 2.78/70.61 | SQ | 30u"/.76um Au- 50u"/1.27um Ni |
| -037 | 2 X 7 | | 1.15/29.21 | .600/15.24 | .92/23.37 | .105/2.67 | .98/24.89 | ROUND | 150u"/3.81um TIN |
| -038 | | | | | | .150/3.81 | | SQ | 30u"/.76um Au- 50u"/1.27um Ni |
| -039 | | | | | | .675/17.15 | | SQ | 150u"/3.81um TIN |
| -040 | | | | | | .105/2.67 | | SQ | 30u"/.76um Au- 50u"/1.27um Ni |
| -041 | | | | | | .150/3.81 | | ROUND | 150u"/3.81um TIN |
| -042 | 2 X 7 | | 1.15/29.21 | .600/15.24 | .92/23.37 | .675/17.15 | .98/24.89 | SQ | 30u"/.76um Au- 50u"/1.27um Ni |
| -043 | 2 X 8 | | 1.25/31.75 | .700/17.78 | 1.02/25.91 | .105/2.67 | 1.08/27.43 | ROUND | 150u"/3.81um TIN |
| -044 | | | | | | .150/3.81 | | SQ | 30u"/.76um Au- 50u"/1.27um Ni |
| -045 | | | | | | .675/17.15 | | SQ | 150u"/3.81um TIN |
| -046 | | | | | | .105/2.67 | | SQ | 30u"/.76um Au- 50u"/1.27um Ni |
| -047 | | | | | | .150/3.81 | | ROUND | 150u"/3.81um TIN |
| -048 | 2 X 8 | | 1.25/31.75 | .700/17.78 | 1.02/25.91 | .675/17.15 | 1.08/27.43 | SQ | 30u"/.76um Au- 50u"/1.27um Ni |
| -049 | 2 X 30 | | 3.45/87.63 | 2.900/73.66 | 3.22/81.79 | .105/2.67 | 3.28/83.31 | ROUND | 150u"/3.81um TIN |
| -050 | | | | | | .150/3.81 | | SQ | 30u"/.76um Au- 50u"/1.27um Ni |
| -051 | | | | | | .675/17.15 | | SQ | 150u"/3.81um TIN |
| -052 | | | | | | .105/2.67 | | SQ | 30u"/.76um Au- 50u"/1.27um Ni |
| -053 | | | | | | .150/3.81 | | ROUND | 150u"/3.81um TIN |
| -054 | 2 X 30 | | 3.45/87.63 | 2.900/73.66 | 3.22/81.79 | .675/17.15 | 3.28/83.31 | SQ | 30u"/.76um Au- 50u"/1.27um Ni |
| -055 | 2 X 5 | | .95/24.13 | .400/10.16 | .72/18.29 | .105/2.67 | .78/19.81 | ROUND | 150u"/3.81um TIN |
| -056 | 2 X 5 | | .95/24.13 | .400/10.16 | .72/18.29 | .150/3.81 | .78/19.81 | ROUND | |
| -057 | 2 X 5 | | .95/24.13 | .400/10.16 | .72/18.29 | .675/17.15 | .78/19.81 | SQ | |
| -058 | 2 X 7 | | 1.15/29.21 | .600/15.24 | .92/23.37 | .105/2.67 | .98/24.89 | ROUND | |
| -059 | 2 X 7 | | 1.15/29.21 | .600/15.24 | .92/23.37 | .150/3.81 | .98/24.89 | ROUND | |
| -060 | 2 X 7 | | 1.15/29.21 | .600/15.24 | .92/23.37 | .675/17.15 | .98/24.89 | SQ | |
| -061 | 2 X 8 | | 1.25/31.75 | .700/17.78 | 1.02/25.91 | .105/2.67 | 1.08/27.43 | ROUND | |
| -062 | 2 X 8 | | 1.25/31.75 | .700/17.78 | 1.02/25.91 | .150/3.81 | 1.08/27.43 | ROUND | |
| -063 | 2 X 8 | | 1.25/31.75 | .700/17.78 | 1.02/25.91 | .675/17.15 | 1.08/27.43 | SQ | |
| -064 | 2 X 10 | | 1.45/36.83 | .900/22.86 | 1.22/30.99 | .105/2.67 | 1.28/32.51 | ROUND | |
| -065 | 2 X 10 | | 1.45/36.83 | .900/22.86 | 1.22/30.99 | .150/3.81 | 1.28/32.51 | ROUND | |
| -066 | 2 X 10 | | 1.45/36.83 | .900/22.86 | 1.22/30.99 | .675/17.15 | 1.28/32.51 | SQ | |
| -067 | 2 X 13 | | 1.75/44.45 | 1.200/30.48 | 1.52/38.61 | .105/2.67 | 1.58/40.13 | ROUND | |
| -068 | 2 X 13 | | 1.75/44.45 | 1.200/30.48 | 1.52/38.61 | .150/3.81 | 1.58/40.13 | ROUND | |
| -069 | 2 X 13 | | 1.75/44.45 | 1.200/30.48 | 1.52/38.61 | .675/17.15 | 1.58/40.13 | SQ | |
| 65496-070 | 2 X 17 | B | 2.15/54.61 | 1.600/40.64 | 1.92/48.77 | .105/2.67 | 1.98/50.29 | ROUND | 30u"/.76um Au- 50u"/1.27um Ni |

| | | | | | | | |
|-------------|----------------|---------------------------------------|------|---------------|---------------------|---------------------------|--|
| mat'l. code | | tolerances unless otherwise specified | | CUSTOMER COPY | | FCI www.fciconnect.com | |
| ltr | ecn no | dr | date | linear | .XX ±.01/.X±.3 | projection | title HEADER,QUICKIE SLIM LINE,RIGHT ANGLE |
| AA | | | | | .XXX ±.005/.XX±.13 | | |
| | | | | angles | 0° ±2° | scale 2:1 | sheet 4 of 7 |
| | | | | dr | P.JAYADEEP 09/21/04 | | |
| | | | | enr | H.SUNDY 09/21/04 | | |
| | | | | chr | H.SUNDY 09/21/04 | | |
| | | | | appd | H.SUNDY 09/21/04 | | |
| sheet index | revision sheet | | | | | | |

Tous droits strictement reserves. Reproduction ou communication a des tiers interdite sous quelque forme que ce soit sans autorisation ecrite du proprietaire. Propriete de c FCI. Droits de reproduction FCI.



All rights strictly reserved. Reproduction or issue to third parties in any form whatever is not permitted without written authority from the proprietor. Property of FCI. Copyright FCI.

| PRODUCT NO | SIZE | STYLE | DIM A | DIM B | DIM C | DIM D | DIM E | TERM CONFIG | TERMINAL PLATING NOTE 15 |
|------------|--------|-------|------------|-------------|------------|------------|------------|-------------|-------------------------------|
| 65496-071 | 2 X 17 | B | 2.15/54.61 | 1.600/40.64 | 1.92/48.77 | .150/3.81 | 1.98/50.29 | ROUND | 30u"/.76um Au- 50u"/1.27um Ni |
| -072 | 2 X 17 | | 2.15/54.61 | 1.600/40.64 | 1.92/48.77 | .675/17.15 | 1.98/50.29 | SQ | |
| -073 | 2 X 20 | | 2.45/62.23 | 1.900/48.26 | 2.22/56.39 | .105/2.67 | 2.28/57.91 | ROUND | |
| -074 | 2 X 20 | | 2.45/62.23 | 1.900/48.26 | 2.22/56.39 | .150/3.81 | 2.28/57.91 | ROUND | |
| -075 | 2 X 20 | | 2.45/62.23 | 1.900/48.26 | 2.22/56.39 | .675/17.15 | 2.28/57.91 | SQ | |
| -076 | 2 X 25 | | 2.95/74.93 | 2.400/60.96 | 2.72/69.09 | .105/2.67 | 2.78/70.61 | ROUND | |
| -077 | 2 X 25 | | 2.95/74.93 | 2.400/60.96 | 2.72/69.09 | .150/3.81 | 2.78/70.61 | ROUND | |
| -078 | 2 X 25 | | 2.95/74.93 | 2.400/60.96 | 2.72/69.09 | .675/17.15 | 2.78/70.61 | SQ | |
| -079 | 2 X 30 | | 3.45/87.63 | 2.900/73.66 | 3.22/81.79 | .105/2.67 | 3.28/33.31 | ROUND | |
| -080 | 2 X 30 | | 3.45/87.63 | 2.900/73.66 | 3.22/81.79 | .150/3.81 | 3.28/33.31 | ROUND | |
| -081 | 2 X 30 | B | 3.45/87.63 | 2.900/73.66 | 3.22/81.79 | .675/17.15 | 3.28/33.31 | SQ | |
| -082 | 2 X 5 | A | .95/24.13 | .400/10.16 | .72/18.29 | .105/2.67 | .78/19.81 | ROUND | |
| -083 | | | | | | .150/3.81 | | ROUND | |
| -084 | | | | | | .675/17.15 | | SQ | 30u"/.76um Au- 50u"/1.27um Ni |
| -085 | | | | | | .105/2.67 | | ROUND | 30u"/.76um Au- 50u"/1.27um Ni |
| -086 | | | | | | .150/3.81 | | ROUND | 30u"/.76um Au- 50u"/1.27um Ni |
| -087 | | | | | | .675/17.15 | | SQ | 30u"/.76um Au- 50u"/1.27um Ni |
| -088 | | | | | | .105/2.67 | | SQ | 150u"/3.81um TIN |
| -089 | | | | | | .150/3.81 | | SQ | 150u"/3.81um TIN |
| -090 | | A | | | | .675/17.15 | | SQ | 150u"/3.81um TIN |
| -091 | | B | | | | .105/2.67 | | ROUND | 30u"/.76um GXT/GOLD FLASH |
| -092 | 2 X 5 | A | .95/24.13 | .400/10.16 | .72/18.29 | .105/2.67 | .78/19.81 | ROUND | 30u"/.76um GXT/GOLD FLASH |
| -093 | 2 X 10 | B | 1.45/36.83 | .900/22.86 | 1.22/30.99 | .105/2.67 | 1.28/32.51 | ROUND | 30u"/.76um GXT/GOLD FLASH |
| -094 | 2 X 20 | | 2.45/62.23 | 1.900/48.26 | 2.22/56.39 | .150/3.81 | 2.28/57.91 | ROUND | 30u"/.76um GXT/GOLD FLASH |
| -095 | 2 X 7 | | 1.15/29.21 | .600/15.24 | .92/23.37 | .675/17.15 | .98/24.89 | SQ | 30u"/.76um GXT/GOLD FLASH |
| -096 | 2 X 10 | | 1.45/36.83 | .900/22.86 | 1.22/30.99 | .105/2.67 | 1.28/32.51 | SQ | 30u"/.76um Au- 50u"/1.27um Ni |
| -097 | 2 X 15 | | 1.95/49.53 | 1.400/35.56 | 1.72/43.69 | | 1.78/45.21 | SQ | 30u"/.76um Au- 50u"/1.27um Ni |
| -098 | 2 X 17 | | 2.15/54.61 | 1.600/40.64 | 1.92/48.77 | | 1.98/50.29 | SQ | 30u"/.76um Au- 50u"/1.27um Ni |
| -099 | 2 X 20 | | 2.45/62.23 | 1.900/48.26 | 2.22/56.39 | | 2.28/57.91 | SQ | 30u"/.76um Au- 50u"/1.27um Ni |
| -100 | 2 X 30 | | 3.45/87.63 | 2.900/73.66 | 3.22/81.79 | | 3.28/33.31 | SQ | 30u"/.76um Au- 50u"/1.27um Ni |
| -101 | 2 X 12 | | 1.65/41.91 | 1.100/27.94 | 1.42/36.07 | .105/2.67 | 1.48/37.60 | ROUND | 30u"/.76um Au- 50u"/1.27um Ni |
| -102 | | | 1.65/41.91 | 1.100/27.94 | 1.42/36.07 | .150/3.81 | | ROUND | 30u"/.76um Au- 50u"/1.27um Ni |
| -103 | | | 1.65/41.91 | 1.100/27.94 | 1.42/36.07 | .675/17.15 | | SQ | 30u"/.76um Au- 50u"/1.27um Ni |
| -104 | | | 1.65/41.91 | 1.100/27.94 | 1.42/36.07 | .105/2.67 | | ROUND | 30u"/.76um Au- 50u"/1.27um Ni |
| 65496-105 | 2 X 12 | B | 1.65/41.91 | 1.100/27.94 | 1.42/36.07 | .150/3.81 | 1.48/37.60 | ROUND | 30u"/.76um Au- 50u"/1.27um Ni |

| | | | | | | | |
|-------------|----------------|---------------------------------------|------|---------------|---------------------|---------------------------|--|
| mat'l. code | | tolerances unless otherwise specified | | CUSTOMER COPY | | FCI www.fciconnect.com | |
| ltr | ecn no | dr | date | linear | .XX ±.01/.X±.3 | projection | title HEADER,QUICKIE SLIM LINE,RIGHT ANGLE |
| AA | | | | | .XXX ±.005/.XX±.13 | | |
| | | | | angles | 0° ±2° | scale | product family size 65496 |
| | | | | dr | P.JAYADEEP 09/21/04 | | |
| | | | | enr | H.SUNDY 09/21/04 | A | sheet 5 of 7 |
| | | | | chr | H.SUNDY 09/21/04 | | |
| | | | | appd | H.SUNDY 09/21/04 | | |
| sheet index | revision sheet | | | | | | |

Tous droits strictement reserves. Reproduction ou communication a des tiers interdite sous quelque forme que ce soit sans autorisation ecrite du proprietaire. Propriete de c FCI. Droits de reproduction FCI.



All rights strictly reserved. Reproduction or issue to third parties in any form whatever is not permitted without written authority from the proprietor. Property of FCI. Copyright FCI.

| PRODUCT NO. | SIZE | STYLE | DIM A | DIM B | DIM C | DIM D | DIM E | TERM CONFIG | TERMINAL PLATING NOTE 15 |
|-------------|--------|-------|------------|-------------|------------|------------|------------|-------------|-------------------------------|
| 65496-106 | 2 X 12 | B | 1.65/41.91 | 1.100/27.94 | 1.42/36.07 | .675/17.15 | 1.48/37.60 | SQ | 30u"/.76um Au- 50u"/1.27um Ni |
| -107 | | | | | | .105/2.67 | | ROUND | 30u"/.76um GXT/GOLD FLASH |
| -108 | | | | | | .150/3.81 | | ROUND | 30u"/.76um GXT/GOLD FLASH |
| -109 | | | | | | .675/17.15 | | SQ | 30u"/.76um GXT/GOLD FLASH |
| -110 | | | | | | .105/2.67 | | SQ | 150u"/3.81um TIN |
| -111 | | | | | | .150/3.81 | | SQ | 150u"/3.81um TIN |
| -112 | 2 X 12 | | 1.65/41.91 | 1.100/27.94 | 1.42/36.07 | .675/17.15 | 1.48/37.60 | SQ | 150u"/3.81um TIN |
| -113 | 2 X 15 | | 1.95/49.53 | 1.400/35.60 | 1.72/43.69 | .105/2.67 | 1.78/45.21 | ROUND | 30u"/.76um Au- 50u"/1.27um Ni |
| -114 | | | | | | .150/3.81 | | ROUND | 30u"/.76um Au- 50u"/1.27um Ni |
| -115 | | | | | | .675/17.15 | | SQ | 30u"/.76um Au- 50u"/1.27um Ni |
| -116 | | | | | | .105/2.67 | | ROUND | 30u"/.76um Au- 50u"/1.27um Ni |
| -117 | | | | | | .150/3.81 | | ROUND | 30u"/.76um Au- 50u"/1.27um Ni |
| -118 | | | | | | .675/17.15 | | SQ | 30u"/.76um Au- 50u"/1.27um Ni |
| -119 | | | | | | .105/2.67 | | ROUND | 30u"/.76um GXT/GOLD FLASH |
| -120 | | | | | | .150/3.81 | | ROUND | 30u"/.76um GXT/GOLD FLASH |
| -121 | | | | | | .675/17.15 | | SQ | 30u"/.76um GXT/GOLD FLASH |
| -122 | | | | | | .105/2.67 | | SQ | 150u"/3.81um TIN |
| -123 | | | | | | .150/3.81 | | SQ | 150u"/3.81um TIN |
| -124 | 2 X 15 | | 1.95/49.53 | 1.400/35.60 | 1.72/43.69 | .675/17.15 | 1.78/45.21 | SQ | 150u"/3.81um TIN |
| -125 | 2 X 22 | | 2.65/67.31 | 2.100/53.34 | 2.42/61.47 | .105/2.67 | 2.48/63.00 | ROUND | 30u"/.76um Au- 50u"/1.27um Ni |
| -126 | | | | | | .150/3.81 | | ROUND | 30u"/.76um Au- 50u"/1.27um Ni |
| -127 | | | | | | .675/17.15 | | SQ | 30u"/.76um Au- 50u"/1.27um Ni |
| -128 | | | | | | .105/2.67 | | ROUND | 30u"/.76um Au- 50u"/1.27um Ni |
| -129 | | | | | | .150/3.81 | | ROUND | 30u"/.76um Au- 50u"/1.27um Ni |
| -130 | | | | | | .675/17.15 | | SQ | 30u"/.76um Au- 50u"/1.27um Ni |
| -131 | | | | | | .105/2.67 | | ROUND | 30u"/.76um GXT/GOLD FLASH |
| -132 | | | | | | .150/3.81 | | ROUND | 30u"/.76um GXT/GOLD FLASH |
| -133 | | | | | | .675/17.15 | | SQ | 30u"/.76um GXT/GOLD FLASH |
| -134 | | | | | | .105/2.67 | | SQ | 150u"/3.81um TIN |
| -135 | | | | | | .150/3.81 | | SQ | 150u"/3.81um TIN |
| -136 | 2 X 22 | | 2.65/67.31 | 2.100/53.34 | 2.42/61.47 | .675/17.15 | 2.48/63.00 | SQ | 150u"/3.81um TIN |
| -137 | 2 X 5 | B | .95/24.13 | .400/10.16 | .72/18.29 | .150/3.81 | .78/19.81 | ROUND | 30u"/.76um GXT/GOLD FLASH |
| -138 | 2 X 5 | A | .95/24.13 | .400/10.16 | .72/18.29 | | .78/19.81 | ROUND | 30u"/.76um GXT/GOLD FLASH |
| -139 | 2 X 7 | B | 1.15/29.21 | .600/15.24 | .92/23.37 | | .98/24.89 | ROUND | 30u"/.76um GXT/GOLD FLASH |
| 65496-140 | 2 X 8 | B | 1.25/31.75 | .700/17.78 | 1.02/25.91 | .150/3.81 | 1.08/27.43 | ROUND | 30u"/.76um GXT/GOLD FLASH |

| | | | | | | | |
|-------------|----------------|---------------------------------------|------|-----------------------|------------|-----------------------|--------|
| mat'l. code | | tolerances unless otherwise specified | | CUSTOMER COPY | | | |
| ltr | ecn no | dr | date | linear | projection | title | |
| AA | | | | .XX ±.01/.X±.3 | | HEADER,QUICKIE | |
| | | | | .XXX ±.005/.XX±.13 | | SLIM LINE,RIGHT ANGLE | |
| | | | | .XXX ±.0020/.XXX±.051 | | product family | code |
| | | | | angles | INCH/MM | KQE.HDR. | 213 |
| | | | | dr | 5:1 | size | sheet |
| | | | | enr | | 65496 | 6 of 7 |
| | | | | chr | | | |
| | | | | appd | | | |
| sheet index | revision sheet | | | | | | |

All rights strictly reserved. Reproduction or issue to third parties in any form whatever is not permitted without written authority from the proprietor. Property of FCI. Copyright FCI.



Tous droits strictement réservés. Reproduction ou communication à des tiers interdite sous quelque forme que ce soit sans autorisation écrite du propriétaire. Propriété de c FCI. Droits de reproduction FCI.

| PRODUCT NO. | SIZE | STYLE | DIM A | DIM B | DIM C | DIM D | DIM E | TERM CONFIG | TERMINAL PLATING NOTE 15 |
|-------------|--------|-------|------------|-------------|------------|-----------|------------|-------------|-------------------------------|
| 65496-141 | 2 X 10 | B | 1.45/36.83 | .900/22.86 | 1.22/30.99 | .150/3.81 | 1.28/32.51 | ROUND | 30u"/.76um GXT/GOLD FLASH |
| -142 | 2 X 13 | | 1.75/44.45 | 1.200/30.48 | 1.52/38.61 | | 1.58/40.13 | | |
| -143 | 2 X 17 | | 2.15/54.61 | 1.600/40.64 | 1.92/48.77 | | 1.98/50.29 | | |
| -144 | 2 X 25 | | 2.95/74.93 | 2.400/60.96 | 2.72/69.09 | | 2.78/70.61 | | |
| -145 | 2 X 30 | | 3.45/87.63 | 2.900/73.66 | 3.22/81.79 | .150/3.81 | 3.28/83.31 | | |
| -146 | 2 X 7 | | 1.15/29.21 | .600/15.24 | .92/23.37 | .105/2.67 | .98/24.89 | | |
| -147 | 2 X 8 | | 1.25/31.75 | .700/17.78 | 1.02/25.91 | | 1.08/27.43 | | |
| -148 | 2 X 13 | | 1.75/44.45 | 1.200/30.48 | 1.52/38.61 | | 1.58/40.13 | | |
| -149 | 2 X 17 | | 2.15/54.61 | 1.600/40.64 | 1.92/48.77 | | 1.98/50.29 | | |
| -150 | 2 X 20 | | 2.45/62.23 | 1.900/48.26 | 2.22/56.39 | | 2.28/57.91 | | |
| -151 | 2 X 25 | | 2.95/74.93 | 2.400/60.96 | 2.72/69.09 | | 2.78/70.61 | | |
| -152 | 2 X 30 | | 3.45/87.63 | 2.900/73.66 | 3.22/81.79 | | 3.28/83.31 | ROUND | 30u"/.76um GXT/GOLD FLASH |
| -153 | 2 X 13 | | 1.75/44.45 | 1.200/30.48 | 1.52/38.61 | | 1.58/40.13 | SQ | 30u"/.76um Au- 50u"/1.27um Ni |
| -154 | 2 X 25 | B | 2.95/74.93 | 2.400/60.96 | 2.72/69.09 | | 2.78/70.61 | SQ | 30u"/.76um Au- 50u"/1.27um Ni |
| -155 | 2 X 25 | C | 2.95/74.93 | 2.400/60.96 | 2.72/69.09 | | 2.78/70.61 | ROUND | 30u"/.76um Au- 50u"/1.27um Ni |
| -156 | 2 X 25 | D | 2.95/74.93 | 2.400/60.96 | 2.72/69.09 | .105/2.67 | 2.78/70.61 | ROUND | 30u"/.76um Au- 50u"/1.27um Ni |
| 65496-157 | 2 X 25 | B | 2.95/74.93 | 2.400/60.96 | 2.72/69.09 | .105/2.67 | 2.78/70.61 | ROUND | 30u"/.76um Au- 50u"/1.27um Ni |

NOTE 11

| | | | | | | | | | | | |
|-------------|----------------|----|------|---------------------------------------|------------------------|----------|-------------|-------------------------|-----------------------|---------------------------|------|
| mat'l. code | | | | tolerances unless otherwise specified | | | | CUSTOMER COPY | | FCI www.fciconnect.com | |
| ltr | ecn no | dr | date | linear | .xx ±.01/.X±.3 | | | projection | title | | |
| AA | | | | | .xxx ±.005/.xx±.13 | | | | HEADER,QUICKIE | | |
| | | | | | .xxxx ±.0020/.xxx±.051 | | | | SLIM LINE,RIGHT ANGLE | | |
| | | | | angles | 0° ±2' | | | INCH/MM scale 5:1 | product family | | code |
| | | | | dr | P.JAYADEEP | 09/21/04 | QKE.HDR. | | 213 | | |
| | | | | enr | H.SUNDY | 09/21/04 | size dwg no | | sheet | | |
| | | | | chr | H.SUNDY | 09/21/04 | A | | 7 of 7 | | |
| | | | | appd | H.SUNDY | 09/21/04 | 65496 | | | | |
| sheet index | revision sheet | | | | | | | | | | |

ACAD

PDM: Rev:AA

STATUS: Released
cage code: 26
Printed: Apr 12, 2011