

ATLANTIC VERSION TERMINATOR INTERFACE ADAPTER	PART NUMBER	REVISION	DESCRIPTION	FEED TYPE	APPLICATOR STYLE CONVERSION CHART						
					CONVERT TO	PART NUMBERS REQUIRED					
	2151651-1	B	FINE CRIMP HEIGHT ADJUST	MECHANICAL	PNEUMATIC FEED	2119950-1	1338685-1	5-18022-5	2119641-1	2119799-1	2063440-1
					SERVO LATCH PLATE	2119951-1	-	8-2151651-5	1901094-3	-	2168400-6 (QUANTITY 2)
					SMART APPLICATOR	2161326-1	-	8-2151651-4	-	-	-
	2151651-2	B	FINE CRIMP HEIGHT ADJUST	PNEUMATIC	MECHANICAL FEED	2119949-1	1338685-1	5-18022-5	2119653-1	-	-
					SERVO LATCH PLATE	2119951-1	-	8-2151651-5	1901094-3	-	2168400-6 (QUANTITY 2)
					SMART APPLICATOR	2161326-1	-	8-2151651-4	-	-	-
	2151651-5	B	FINE CRIMP HEIGHT ADJUST	SERVO LATCH PLATE ⁴	MECHANICAL FEED	2119949-1	1338685-1	5-18022-5	2119653-1	-	-
					PNEUMATIC FEED	2119950-1	1338685-1	5-18022-5	2119641-1	2119799-1	2063440-1
	2151651-6	B	NON-CRIMP HEIGHT ADJUST	SERVO LATCH PLATE ⁴	-	-	-	-	-	-	-
					-	-	-	-	-	-	-
	2151651-7	B	FINE CRIMP HEIGHT ADJUST	NONE	-	-	-	-	-	-	-
					-	-	-	-	-	-	-
	7-2151651-7	A	CRIMP TOOLING KIT	-	-	-	-	-	-	-	-

APPLICATOR DATA		
CRIMP	SIZE	TYPE
WIRE	1.40 mm [.055]	F
INSUL	2.00 mm [.079]	O

APPLICATOR INSTRUCTIONS 408-10389

TERMINAL DATA:	TE TERMINAL	TE CRIMP SPECIFICATION
TERMINAL NAME:	CONTACT, RECEPTACLE / TAB, CRIMP SNAP-IN	
WIRE STRIP LENGTH		INSULATION DIAMETER RANGE
2.63-2.88 mm [.104-.113 IN]		∅ 1.70-2.10 mm [.067-.083 IN]
TERMINAL APPLICATION SPECIFICATION		114-13261
TERMINALS APPLIED		
TE TERMINAL	TE TERMINAL	TE TERMINAL
2106123-1	2106123-3	2106124-2

WIRE SIZE	CRIMP HEIGHT mm [INCH]	CRIMP HEIGHT REFERENCE SETTING
18 AWG	1.05+/-0.05 [.041+/-0.002]	7.4
20 AWG	0.87+/-0.05 [.034+/-0.002]	9.3

- RECOMMENDED SPARE PARTS
- GREASE BEARING SURFACES LIGHTLY
- 3. LUBRICATE DAILY PER THE APPLICATOR INSTRUCTION SHEET SUPPLIED WITH THE APPLICATOR.
- APPLICATOR SPECIFIC DATA TO BE ENTERED INTO BLANK MEMORY CHIP AT ASSEMBLY. SEE BELOW FOR PART NUMBER:
 MECHANICAL FEED WITH "SMART APPLICATOR" CONVERSION: 8-2151651-4
 PNEUMATIC FEED WITH "SMART APPLICATOR" CONVERSION: 8-2151651-4
 SERVO FEED WITH "FINE CRIMP HEIGHT ADJUST": 8-2151651-5
 SERVO FEED WITH "NON-CRIMP HEIGHT ADJUST": 8-2151651-6
- 5. ADJUSTMENT OF THE STRIPPER MAY BE REQUIRED WHEN MOVING THE APPLICATOR BETWEEN BENCH AND LEADMAKER APPLICATIONS.
- APPLY PART NUMBER 1-23419-5 LOCTITE TO THREADS OF ITEM 62. APPLY PART NUMBER 2-23419-6 LOCTITE TO THREADS OF ITEM 242. FOR -6 ONLY APPLY PART NUMBER 1-23419-5 LOCTITE TO THREADS OF ITEM 37.
- GREASE THREADS, GROOVE AND O-RING ON ITEMS 35 & 252.
- MAGNET, ITEM 166 MUST BE ORIENTED CORRECTLY IN ORDER TO PROPERLY ACTUATE THE COUNTER.
- CRIMP HEIGHT REFERENCE SETTING WAS THE SETTING USED WHEN THE APPLICATOR WAS QUALIFIED AT THE FACTORY. ADJUSTMENT MAY BE NECESSARY WHEN RUNNING APPLICATOR IN THE FIELD.
- SPARE FEED CAM STORAGE LOCATION REFER TO INSTRUCTION SHEET FOR ADDITIONAL INFORMATION.
- TO CONVERT THE APPLICATOR TO A NON-CARRIER CUTTING STYLE, REMOVE ITEM 13 AND ATTACH TO THE LOCATION ON THE BACK SIDE OF THE HOUSING. REFER TO INSTRUCTION SHEET FOR ADDITIONAL INFORMATION.
- WHEN ASSEMBLING A NON CRIMP HEIGHT ADJUST APPLICATOR (-6) USE SHIMS FROM ITEM 260 TO ACHIEVE A NOMINAL SHIM HEIGHT OF 4.75.
- TERMINAL LUBRICANT IS RECOMMENDED.

***WARNING**
 ON INSTALLATION, SET WIRE DISC, ITEM 40 TO LARGEST WIRE SIZE SETTING. USE OF SETTINGS BELOW MINIMUM REQUIRED CRIMP HEIGHT SETTING WILL CAUSE DAMAGE TO CRIMP TOOLING.

	-	-	1	-	-	-	2119957-2	APPLICATOR SHIM PACK		260	
	-	1	-	1	1	1	8-21084-0	O-RING, .676 ID, .070 DIA. MAT.		252	
	-	-	-	-	1	-	2119640-1	PUSH ROD, AIR FEED		250	
	-77	-7	-6	-5	-2	-1	PART NO	DESCRIPTION		ITEM NO	

ATLANTIC VERSION
 Shown on sheets 1 of 4 & 2 of 4
 (Pacific version shown on sheets 3 of 4 & 4 of 4)

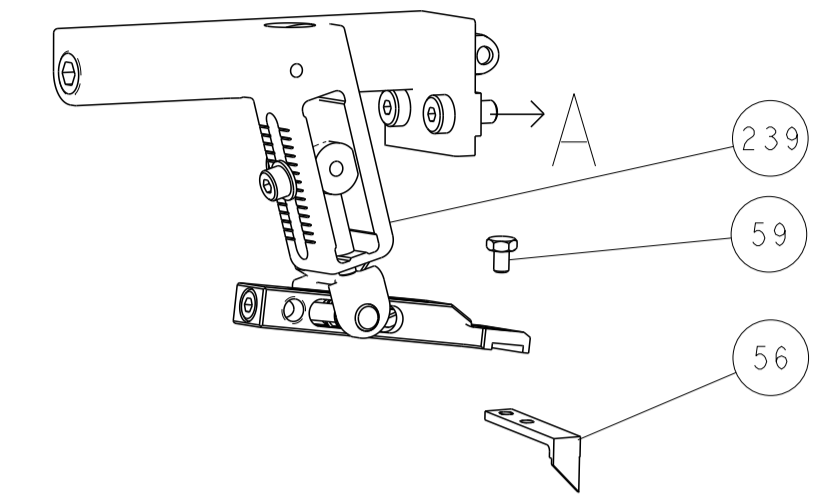
SET UP GAUGE 2119599-1	LOC A	DIST 66	REVISIONS			
			REV	DATE	BY	APPV
			1	DEVELOPMENT	07AUG2015	JH UG
			2	REVISED	10AUG2015	JH UG
			A	RELEASED	25SEP2015	JH GB
			B	ECR-17-001492	03FEB2017	MR TE

-	-	-	-	1	-	2079988-1	BUSHING, LCH5-12, MISUMI		249
-	-	-	-	1	-	2119641-1	FEED CAM, AIR FEED		248
-	1	-	1	1	1	2119798-1	DETENT PIN		247
-	1	-	1	1	1	1-22279-3	SPRING, COMPRESSION		246
-	-	1	-	-	-	2119758-1	RAM, AMP STYLE, SIDE FEED, NON-ADJ.		245
-	1	1	1	1	1	2119082-4	CAM, SNAIL, INSULATION ADJUSTMENT		244
-	1	1	1	1	1	2079764-1	WASHER, WAVE SPRING, CREST-TO-CREST		243
-	1	1	1	1	1	2119083-1	RETAINER, INSULATION DIAL		242
-	1	1	1	1	1	7-18023-7	SCR, SKT HD CAP M3 X 4.0		241
-	-	2	2	-	-	2168400-6	SHCS, LOW HEAD, RoHS, M5 X 16		240
-	-	-	-	-	1	2119580-1	MECHANICAL FEED ASSEMBLY		239
-	-	-	-	1	-	2063440-1	AIR FEED MODULE		238
-	-	1	1	-	-	2119740-2	TAG, IDENTIFICATION		213
-	-	1	1	-	-	1901094-3	SPACER, FEEDER		198
-	-	-	-	2	-	21045-3	RING, RETAIN, EXTERN, 3/16 CRESCENT		172
-	1	1	1	1	1	994969-1	MAGNET, RARE EARTH HIGH ENERGY		166
-	REF	REF	REF	REF	REF	994970-2	COUNTER, MAGNETIC		164
-	-	-	-	1	-	240638-1	SPRING, FEED FINGER		163
-	-	-	-	1	-	3-23627-7	PIN, RETAIN, GRVD, 3/16 X .854		137
-	-	-	-	1	-	2119799-1	HOLDER, FEED FINGER, AF		136
-	-	REF	REF	-	-	SEE NOTE 4	MEMORY CHIP, PROGRAMMED		135
-	-	1	1	-	-	1633743-1	SERVO FEED LATCH ASM		133
-	-	REF	REF	-	-	2119944-1	FEED FINGER ASSEMBLY, SF		117
-	1	1	1	1	1	2119955-1	ASSY, LUBRICATOR, SIDE FEED		113
-	1	1	1	1	1	455888-5	SPACER, CRIMPER		82
-	1	1	1	1	1	2119956-1	DOCUMENTATION PACKAGE		71
-	1	1	1	1	1	1-2119791-7	DEPRESSOR, WIRE		70
-	1	-	-	1	1	2119740-1	TAG, IDENTIFICATION		67
-	2	2	2	2	2	2168078-1	SCREW, DRIVE, RH, RoHS, 2 x .188		66
-	1	-	1	1	1	2119793-1	LIMITER, ADJUSTMENT BOLT		63
-	3	-	3	3	3	992763-5	SCR, SET, SOC, CONE POINT, M3 X 4.0		62
-	1	1	1	1	1	2079383-4	SCR, BHSC, RoHS (M4 X 8)		60
-	-	-	-	1	1	5-18022-5	SCR, HEX HD CAP, M4 X 6.0		59
-	-	-	-	1	1	1338685-1	PAWL, FEED		56
-	4	4	4	4	4	2168400-1	SHCS, LOW HEAD, RoHS, M4 X 12		54
-	2	2	2	2	2	1-2168083-0	SCR, SKT HD CAP, RoHS, M4 X 10		53
-	1	1	1	1	1	5018030-1	NUT, HEX, REG, RoHS, M3		52
-	1	1	1	1	1	811242-5	BUMPER, HOLD DOWN		51
-	1	1	1	1	1	690753-2	SPACER, TONKER		50
-	-	-	-	1	2	18023-9	SCR, SKT HD CAP M4 X 6.0		49
-	-	-	-	-	1	2119652-1	FEED CAM, PRE FEED		48
-	-	-	-	-	1	2119653-1	FEED CAM, POST FEED		47
-	1	1	1	1	1	2119656-9	APPLICATOR BASIC ASSEMBLY, SF		46
-	1	-	1	1	1	2119370-1	RAM, AMP STYLE, SIDE FEED		44
-	1	1	1	1	1	2079383-7	SCR, BHSC, RoHS (M8 X 25)		41
-	1	-	1	1	1	2119645-1	DISC, NUMBERED FA WIRE ADJUSTMENT		40
-	1	-	1	1	1	2119957-1	APPLICATOR SHIM PACK		39
-	1	1	1	1	1	2119644-1	RAM WASHER, PRECISION		38
-	1	1	1	1	1	2119085-1	FA HEAD, ATLANTIC STYLE		37
-	1	-	1	1	1	2119092-1	BOLT, ADJUSTMENT		35
-	1	1	1	1	1	1752356-3	SUPPORT, TERMINAL		34
-	2	2	2	2	2	2079383-5	SCR, BHSC, RoHS (M4 X 20)		33
-	1	1	1	1	1	2161328-1	HEX HEAD, FLANGED, M5 X 8mm LONG		32
-	1	1	1	1	1	1320908-3	SPACER, STRIP GUIDE		30
-	1	1	1	1	1	2119959-1	ASSEMBLY, STRIP GUIDE		29
-	1	1	1	1	1	2119791-6	DEPRESSOR, WIRE		28
-	1	1	1	1	1	1320928-2	STRIP GUIDE		24
-	1	1	1	1	1	2168083-2	SCR, SKT HD CAP, RoHS, M4 X 8.0		21
-	2	2	2	2	2	1-18028-2	WASHER, FLAT, REG M4		20
-	1	1	1	1	1	2119533-1	STRIPPER, SIDE FEED		19
-	1	1	1	1	1	2119806-1	INSERT, SHEAR		13
-	1	1	1	1	1	3-22280-3	SPRING, COMPRESSION		12
-	1	1	1	1	1	1-356885-4	STOP, SHEAR		11
-	1	1	1	1	1	2119805-1	SHEAR HOLDER, FRONT		10
-	1	1	1	1	1	1803095-3	FLOATING SHEAR, FRONT		9
-	1	1	1	1	1	4-1803055-6	ANVIL, COMBINATION		8
-	-	-	-	-	-	-	-		7
-	-	-	-	-	-	-	-		6
-	1	1	1	1	1	2119757-8	DEPRESSOR, SHEAR		5
-	1	1	1	1	1	3-238011-3	BLOCK, CRIMPER SPACER		4
-	1	1	1	1	1	5-1633966-9	CRIMPER, INSULATION O		3
-	-	-	-	-	-	-	-		2
-	1	1	1	1	1	1-456402-0	CRIMPER, WIRE PREMIUM		1
-77	-7	-6	-5	-2	-1	PART NO	DESCRIPTION		ITEM NO

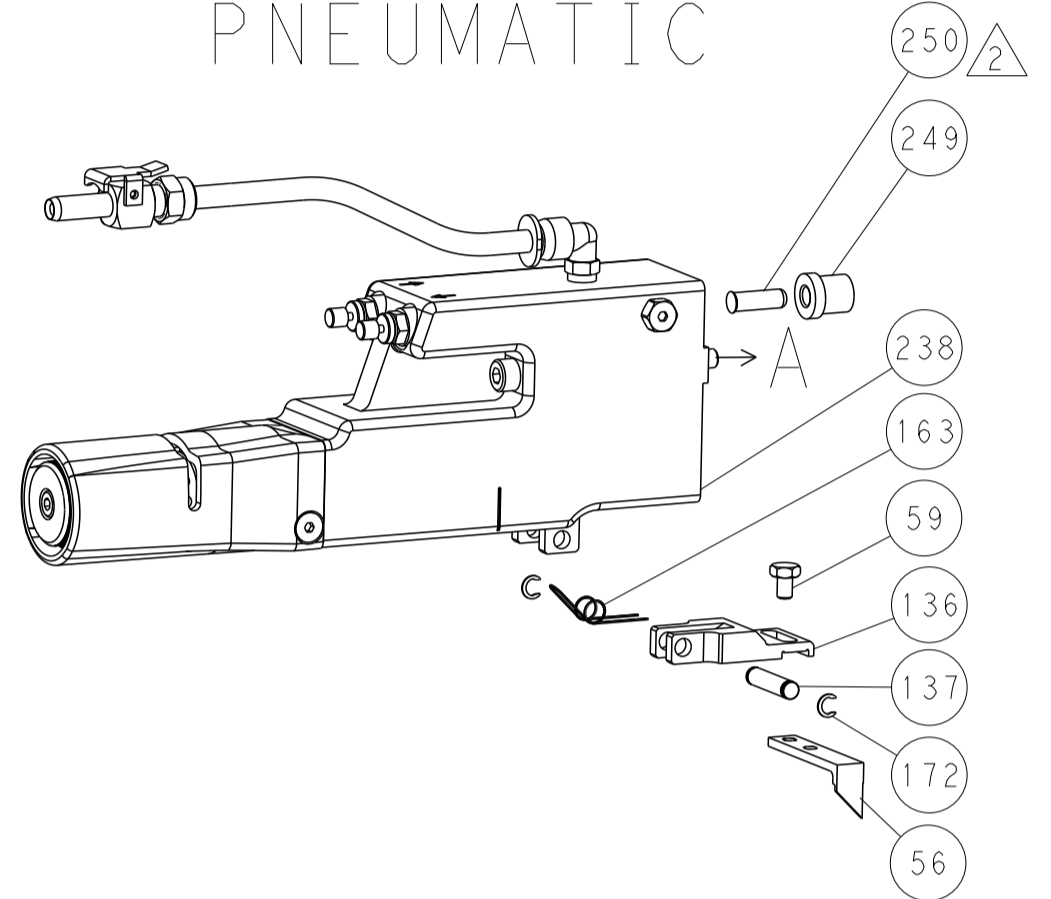
DIMENSIONS:		TOLERANCES UNLESS OTHERWISE SPECIFIED:		OWN	J. HOU	TAUG2015		TE Connectivity
mm		0 PLC ±		CHK	L. ZHANG	TAUG2015		Harrisburg, PA 17105-3608
		1 PLC ±		APPV	J. GUO	TAUG2015		NAME
		2 PLC ±		PRODUCT SPEC		Ocean Side Feed		
		3 PLC ±		APPLICATION SPEC		Applicator		
		4 PLC ±		SIZE		CAGE CODE DRAWING NO		
		ANGLES		A1		00779 C=2151651		
MATERIAL		FINISH		WEIGHT		RESTRICTED TO		
						Customer Accessible Production Drawing		
				SCALE		SHEET 1 OF 4		
				1:2		REV B		

LOC	DIST	REV	DATE	BY	APPV
A	66				

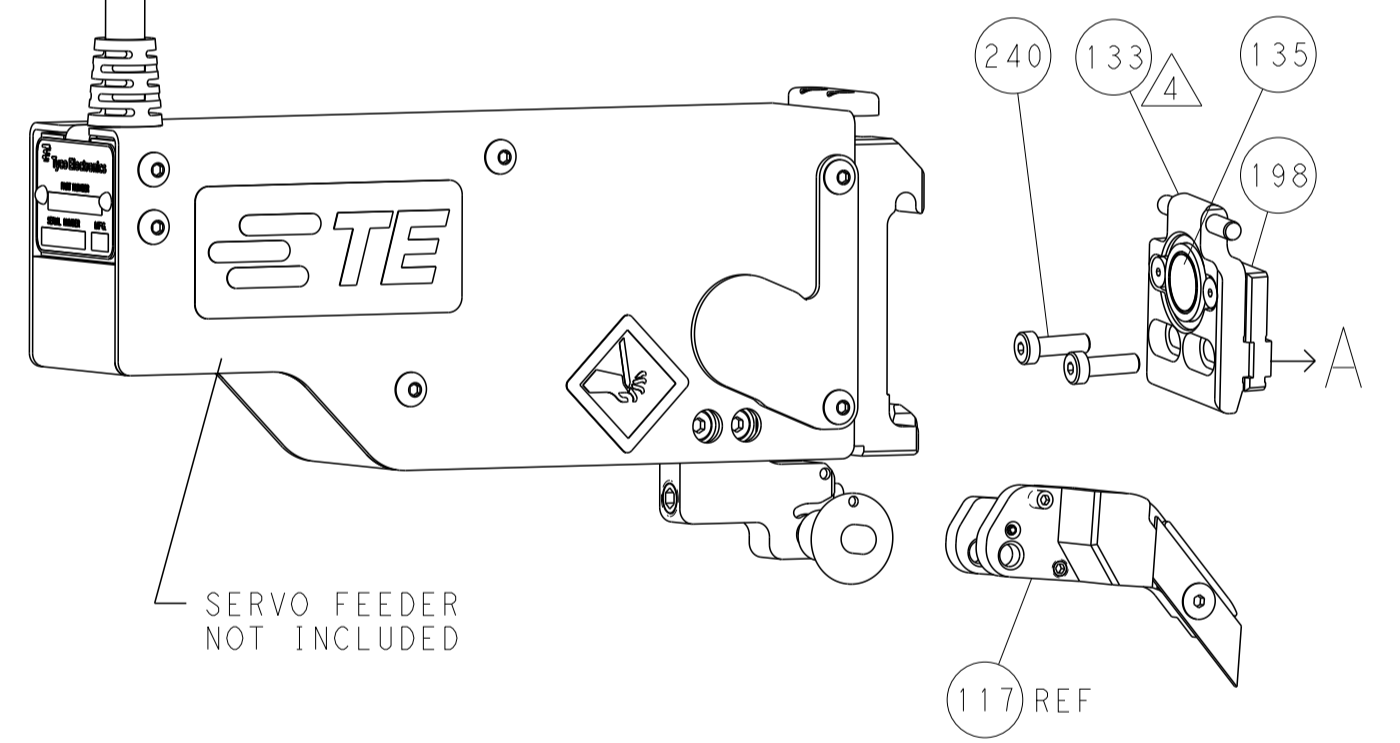
FEED TYPE MECHANICAL



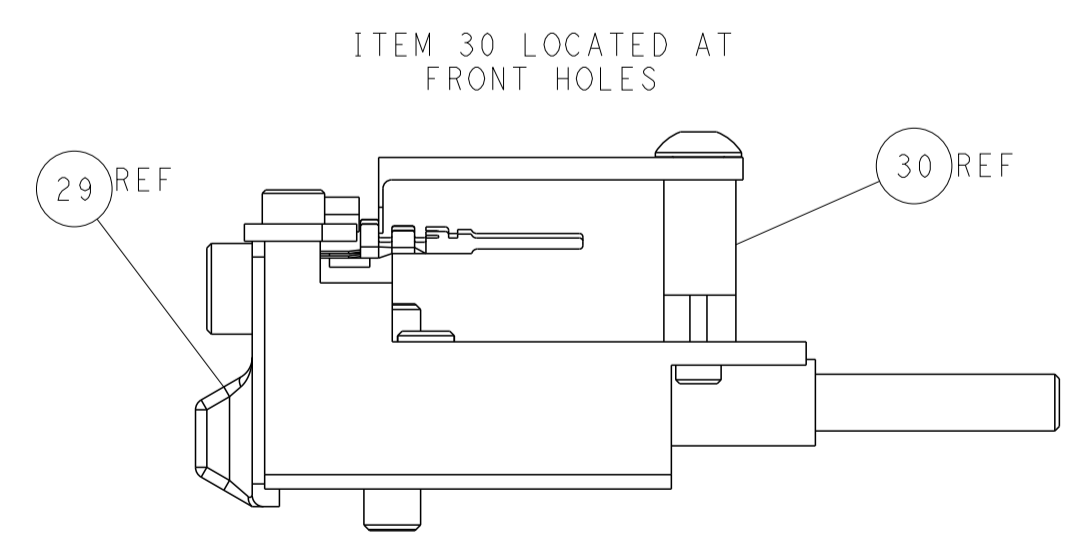
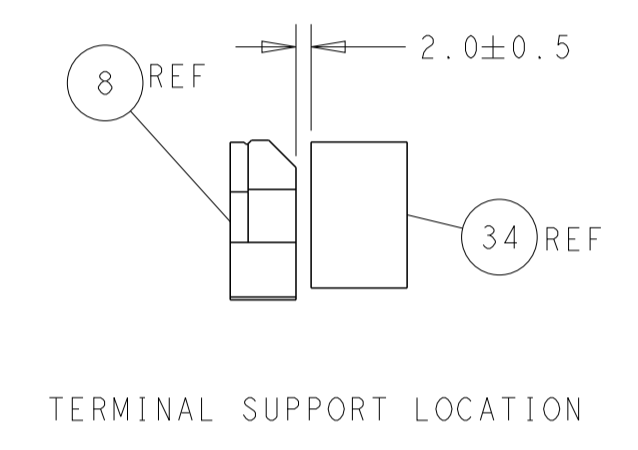
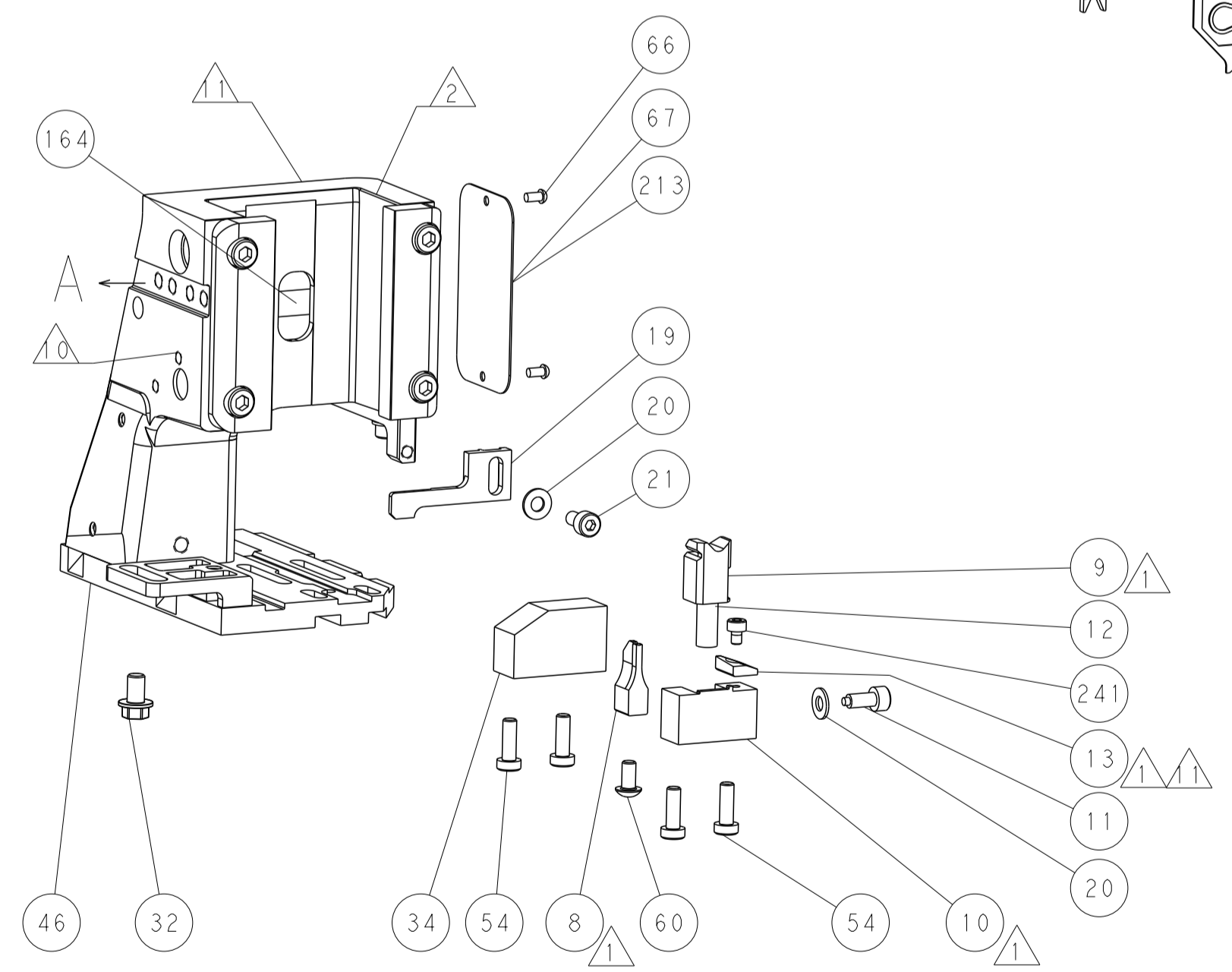
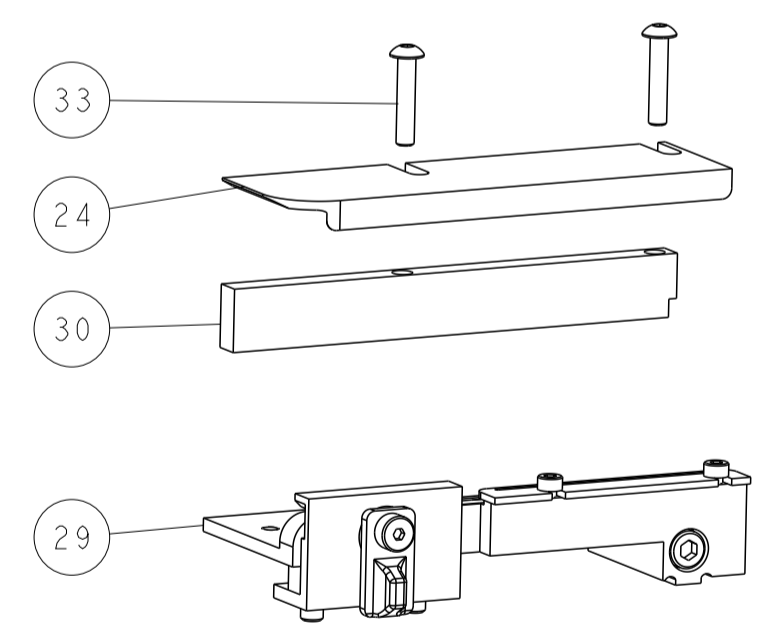
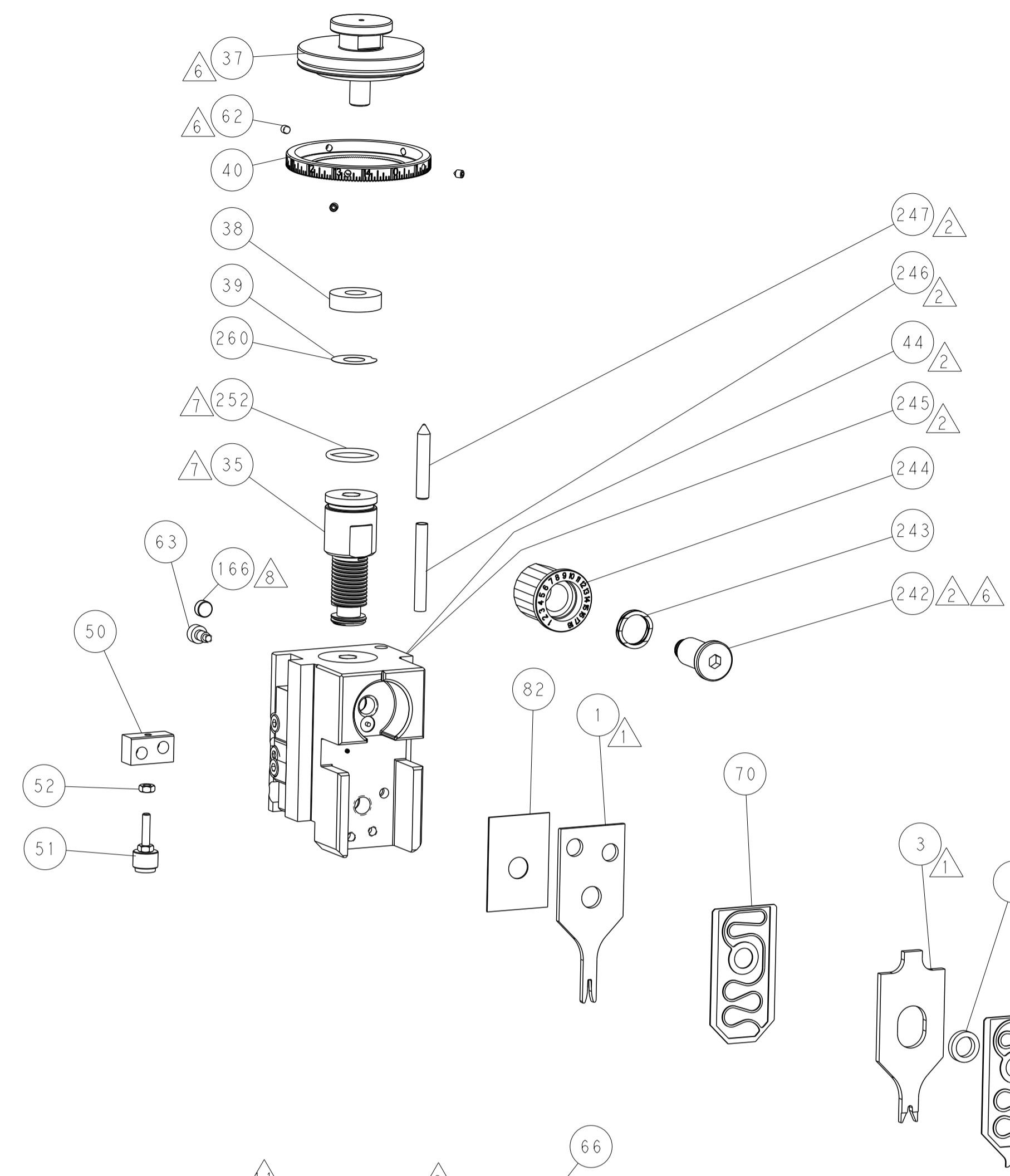
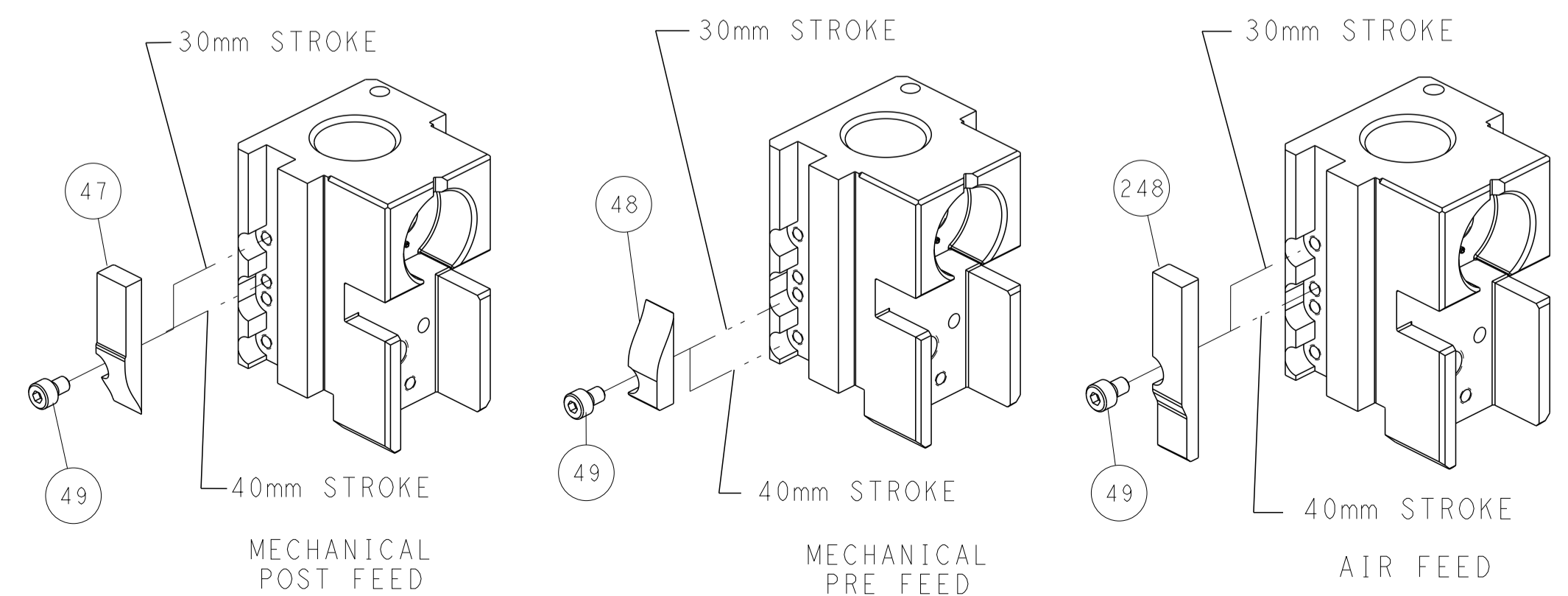
PNEUMATIC



SERVO LATCH PLATE



CAM POSITIONS



ATLANTIC VERSION
 Shown on sheets 1 of 4 & 2 of 4
 (Pacific version shown on sheets 3 of 4 & 4 of 4)

DIMENSIONS:		TOLERANCES UNLESS OTHERWISE SPECIFIED:		OWN: J. HOU	DATE: 7AUG2015	TE Connectivity Harrisburg, PA 17105-3608
mm	0 PLC ±	1 PLC ±	2 PLC ±	CHK: L. ZHANG	DATE: 7AUG2015	
MATERIAL:		FINISH:		APV: J. GUO	DATE: 7AUG2015	NAME: Ocean Side Feed Applicator
				WEIGHT:	SCALE: 1:2	RESTRICTED TO:
				Customer Accessible Production Drawing	SHEET 2 OF 4	REV B

PACIFIC VERSION TERMINATOR INTERFACE ADAPTER	PART NUMBER	REVISION	DESCRIPTION	FEED TYPE	APPLICATOR STYLE CONVERSION CHART						
					CONVERT TO	PART NUMBERS REQUIRED					
	2-2151651-1	B	FINE CRIMP HEIGHT ADJUST	MECHANICAL	PNEUMATIC FEED	2119950-1	1338685-1	5-18022-5	2119641-2	2119799-1	2063440-1
					SERVO LATCH PLATE	2119951-1	-	8-2151651-5	1901094-3	-	2168400-6 (QUANTITY 2)
					SMART APPLICATOR	2161326-1	-	8-2151651-4	-	-	-
	2-2151651-2	B	FINE CRIMP HEIGHT ADJUST	PNEUMATIC	MECHANICAL FEED	2119949-1	1338685-1	5-18022-5	2119653-2	-	-
					SERVO LATCH PLATE	2119951-1	-	8-2151651-5	1901094-3	-	2168400-6 (QUANTITY 2)
					SMART APPLICATOR	2161326-1	-	8-2151651-4	-	-	-
	2-2151651-5	B	FINE CRIMP HEIGHT ADJUST	SERVO LATCH PLATE	MECHANICAL FEED	2119949-1	1338685-1	5-18022-5	2119653-2	-	-
					PNEUMATIC FEED	2119950-1	1338685-1	5-18022-5	2119641-2	2119799-1	2063440-1
	2-2151651-7	B	FINE CRIMP HEIGHT ADJUST	NONE	-	-	-	-	-	-	-
	7-2151651-7	A	CRIMP TOOLING KIT	-	-	-	-	-	-	-	-

APPLICATOR DATA		
CRIMP	SIZE	TYPE
WIRE	1.40 mm [.055]	F
INSUL	2.00 mm [.079]	O
APPLICATOR INSTRUCTIONS 408-10389		

TERMINAL DATA:	TE TERMINAL	TE CRIMP SPECIFICATION
TERMINAL NAME:	CONTACT, RECEPTACLE / TAB, CRIMP SNAP-IN	
WIRE STRIP LENGTH	INSULATION DIAMETER RANGE	
2.63-2.88 mm [1.04-.113 IN]	1.70-2.10 mm [1.067-.083 IN]	
TERMINAL APPLICATION SPECIFICATION	114-13261	
TERMINALS APPLIED		
TE TERMINAL	TE TERMINAL	TE TERMINAL
2106123-1	2106123-3	2106124-2
		2106124-3

WIRE SIZE	CRIMP HEIGHT mm [INCH]	CRIMP HEIGHT REFERENCE SETTING
18 AWG	1.05+/-0.05 [1.041+/-0.002]	7.4
20 AWG	0.87+/-0.05 [1.034+/-0.002]	9.3

- RECOMMENDED SPARE PARTS
- GREASE BEARING SURFACES LIGHTLY
- LUBRICATE DAILY PER THE APPLICATOR INSTRUCTION SHEET SUPPLIED WITH THE APPLICATOR.
- APPLICATOR SPECIFIC DATA TO BE ENTERED INTO BLANK MEMORY CHIP AT ASSEMBLY. SEE BELOW FOR PART NUMBER:
 MECHANICAL FEED WITH "SMART APPLICATOR" CONVERSION: 8-2151651-4
 PNEUMATIC FEED WITH "SMART APPLICATOR" CONVERSION: 8-2151651-4
 SERVO FEED WITH "FINE CRIMP HEIGHT ADJUST": 8-2151651-5
- ADJUSTMENT OF THE STRIPPER MAY BE REQUIRED WHEN MOVING THE APPLICATOR BETWEEN BENCH AND LEADMAKER APPLICATIONS.
- APPLY PART NUMBER 1-23419-5 LOCTITE TO THREADS OF ITEM 62.
 APPLY PART NUMBER 2-23419-6 LOCTITE TO THREADS OF ITEM 242.
- GREASE THREADS, GROOVE AND O-RING ON ITEMS 139 & 152.
- MAGNET MUST BE ORIENTED CORRECTLY IN ORDER TO PROPERLY ACTUATE THE COUNTER.
- CRIMP HEIGHT REFERENCE SETTING WAS THE SETTING USED WHEN THE APPLICATOR WAS QUALIFIED AT THE FACTORY. ADJUSTMENT MAY BE NECESSARY WHEN RUNNING APPLICATOR IN THE FIELD.
- SPARE FEED CAM STORAGE LOCATION REFER TO INSTRUCTION SHEET FOR ADDITIONAL INFORMATION.
- TO CONVERT THE APPLICATOR TO A NON-CARRIER CUTTING STYLE, REMOVE ITEM 13 AND ATTACH TO THE LOCATION ON BACK SIDE OF THE HOUSING. REFER TO INSTRUCTION SHEET FOR ADDITIONAL INFORMATION.
- TERMINAL LUBRICANT IS RECOMMENDED.

***WARNING**
 ON INSTALLATION, SET WIRE DISC, ITEM 40 TO LARGEST WIRE SIZE SETTING. USE OF SETTINGS BELOW MINIMUM REQUIRED CRIMP HEIGHT SETTING WILL CAUSE DAMAGE TO CRIMP TOOLING.

-	1	1	1	1	2119782-1	FINE ADJUST HEAD ASM, PACIFIC STYLE	251
-77	-27	-25	-22	-21	PART NO	DESCRIPTION	ITEM NO

PACIFIC VERSION
 Shown on sheets 3 of 4 & 4 of 4
 (Atlantic version shown on sheets 1 of 4 & 2 of 4)

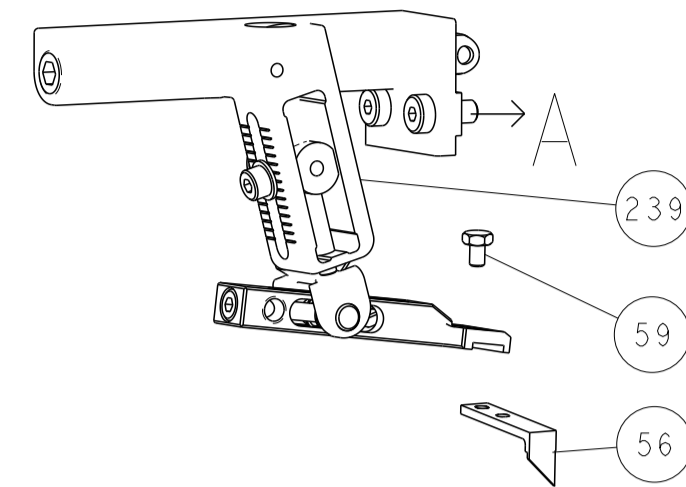
SET UP GAUGE	LOC	DIST	REVISIONS					
2119599-1	A	66	P	LTN	DESCRIPTION	DATE	OWN	APVD
			-	-	SEE SHEET 1	-	-	-

-	-	-	1	-	2119640-1	PUSH ROD, AIR FEED	250
-	-	-	1	-	2079988-1	BUSHING, LCH5-12, MISUMI	249
-	1	1	1	1	1-22279-3	SPRING, COMPRESSION	246
-	1	1	1	1	2119082-4	CAM, SNAIL, INSULATION ADJUSTMENT	244
-	1	1	1	1	2079764-1	WASHER, WAVE SPRING, CREST-TO-CREST	243
-	1	1	1	1	2119083-1	RETAINER, INSULATION DIAL	242
-	1	1	1	1	7-18023-7	SCR, SKT HD CAP M3 X 4.0	241
-	-	2	-	-	2168400-6	SHCS, LOW HEAD, RoHS, M5 X 16	240
-	-	-	-	1	2119580-1	MECHANICAL FEED ASSEMBLY	239
-	-	-	-	1	2063440-1	AIR FEED MODULE	238
-	-	1	-	-	2119740-2	TAG, IDENTIFICATION	213
-	-	1	-	-	1901094-3	SPACER, FEEDER	198
-	-	-	2	-	21045-3	RING, RETAIN, EXTERN, 3/16 CRESCENT	172
-	1	1	1	1	994969-1	MAGNET, RARE EARTH HIGH ENERGY	166
-	REF	REF	REF	REF	994970-2	COUNTER, MAGNETIC	164
-	-	-	1	-	240638-1	SPRING, FEED FINGER	163
-	1	1	1	1	8-21084-1	O-RING, .801 ID, .070 DIA. MAT.	152
-	-	-	1	-	2119641-2	FEED CAM, AIR FEED	151
-	1	1	1	1	2119798-2	DETENT PIN	145
-	1	1	1	1	2079383-8	SCR, BHSC, RoHS (M4 X 16)	144
-	4	4	4	4	2168400-5	SHCS, LOW HEAD, RoHS, M4 X 20	143
-	-	-	-	1	2119653-2	FEED CAM, POST FEED	142
-	1	1	1	1	1-2119656-0	APPLICATOR BASIC ASSEMBLY, SF	141
-	1	1	1	1	2119650-1	RAM, ASIAN STYLE, SIDE FEED	140
-	1	1	1	1	2119092-2	BOLT, ADJUSTMENT	139
-	-	-	1	-	3-23627-7	PIN, RETAIN, GRVD, 3/16 X .854	137
-	-	-	1	-	2119799-1	HOLDER, FEED FINGER, AF	136
-	-	REF	-	-	-	SEE NOTE 4	135
-	-	1	-	-	1633743-1	SERVO FEED LATCH ASM	133
-	-	REF	-	-	2119944-1	FEED FINGER ASSEMBLY, SF	117
-	1	1	1	1	2119955-1	ASSY, LUBRICATOR, SIDE FEED	113
-	1	1	1	1	455888-5	SPACER, CRIMPER	82
-	1	1	1	1	2119956-1	DOCUMENTATION PACKAGE	71
-	1	1	1	1	1-2119791-7	DEPRESSOR, WIRE	70
-	1	-	1	1	2119740-1	TAG, IDENTIFICATION	67
-	2	2	2	2	2168078-1	SCREW, DRIVE, RH, RoHS, 2 x .188	66
-	1	1	1	1	2119793-1	LIMITER, ADJUSTMENT BOLT	63
-	3	3	3	3	992763-5	SCR, SET, SOC, CONE POINT, M3 X 4.0	62
-	-	-	1	1	5-18022-5	SCR, HEX HD CAP, M4 X 6.0	59
-	-	-	1	1	1338685-1	PAWL, FEED	56
-	2	2	2	2	1-2168083-0	SCR, SKT HD CAP, RoHS, M4 X 10	53
-	1	1	1	1	5018030-1	NUT, HEX, REG, RoHS, M3	52
-	1	1	1	1	811242-5	BUMPER, HOLD DOWN	51
-	1	1	1	1	690753-2	SPACER, TONKER	50
-	-	-	1	2	18023-9	SCR, SKT HD CAP M4 X 6.0	49
-	-	-	-	1	2119652-1	FEED CAM, PRE FEED	48
-	1	1	1	1	2079383-7	SCR, BHSC, RoHS (M8 X 25)	41
-	1	1	1	1	2119645-1	DISC, NUMBERED FA WIRE ADJUSTMENT	40
-	1	1	1	1	2119957-1	APPLICATOR SHIM PACK	39
-	1	1	1	1	2119644-1	RAM WASHER, PRECISION	38
-	1	1	1	1	1752356-3	SUPPORT, TERMINAL	34
-	2	2	2	2	2079383-5	SCR, BHSC, RoHS (M4 X 20)	33
-	1	1	1	1	2161328-1	HEX HEAD, FLANGED, M5 x 8mm LONG	32
-	1	1	1	1	1320908-3	SPACER, STRIP GUIDE	30
-	1	1	1	1	2119959-1	ASSEMBLY, STRIP GUIDE	29
-	1	1	1	1	2119791-6	DEPRESSOR, WIRE	28
-	1	1	1	1	1320928-2	STRIP GUIDE	24
-	1	1	1	1	2168083-2	SCR, SKT HD CAP, RoHS, M4 X 8.0	21
-	2	2	2	2	1-18028-2	WASHER, FLAT, REG M4	20
-	1	1	1	1	2119533-1	STRIPPER, SIDE FEED	19
-	1	1	1	1	2119806-1	INSERT, SHEAR	13
-	1	1	1	1	3-22280-3	SPRING, COMPRESSION	12
-	1	1	1	1	1-356885-4	STOP, SHEAR	11
-	1	1	1	1	2119805-1	SHEAR HOLDER, FRONT	10
-	1	1	1	1	1803095-3	FLOATING SHEAR, FRONT	9
-	1	1	1	1	4-1803055-6	ANVIL, COMBINATION	8
-	-	-	-	-	-	-	7
-	-	-	-	-	-	-	6
-	1	1	1	1	2119757-8	DEPRESSOR, SHEAR	5
-	1	1	1	1	3-238011-3	BLOCK, CRIMPER SPACER	4
-	1	1	1	1	5-1633966-9	CRIMPER, INSULATION O	3
-	-	-	-	-	-	-	2
-	1	1	1	1	1-456402-0	CRIMPER, WIRE PREMIUM	1

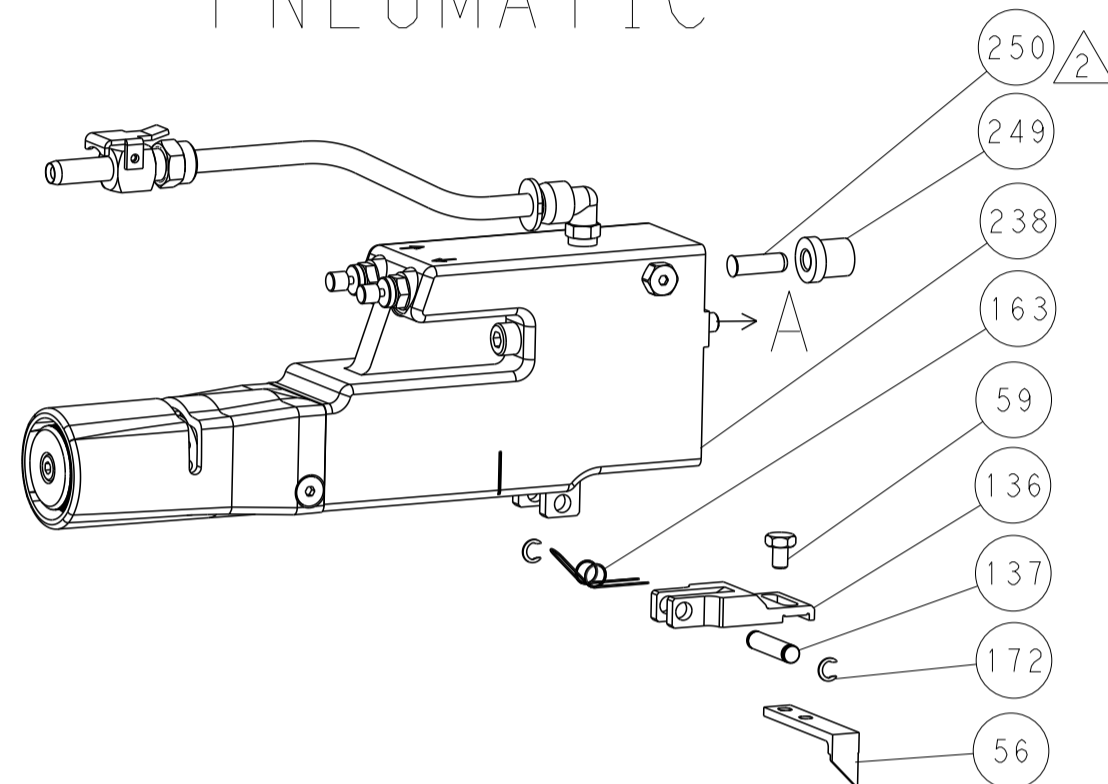
DIMENSIONS: mm 		TOLERANCES UNLESS OTHERWISE SPECIFIED: 0 PLC ± 1 PLC ± 2 PLC ± 3 PLC ± 4 PLC ± ANGLES ± FINISH		DWG: J. HOU CHK: L. ZHANG APVD: J. GUO DATE: AUG2015 PRODUCT SPEC: APPLICATION SPEC: WEIGHT: MATERIAL:		NAME: Ocean Side Feed Applicator SIZE: A1 CAGE CODE: 00779 DRAWING NO: C=2151651 RESTRICTED TO:	
Customer Accessible Production Drawing		SCALE: 1:2		SHEET 3 OF 4		REV B	

LOC		DIST		REVISIONS			
A	66	P	LTM	DESCRIPTION	DATE	OWN	APVD
		-		SEE SHEET 1			

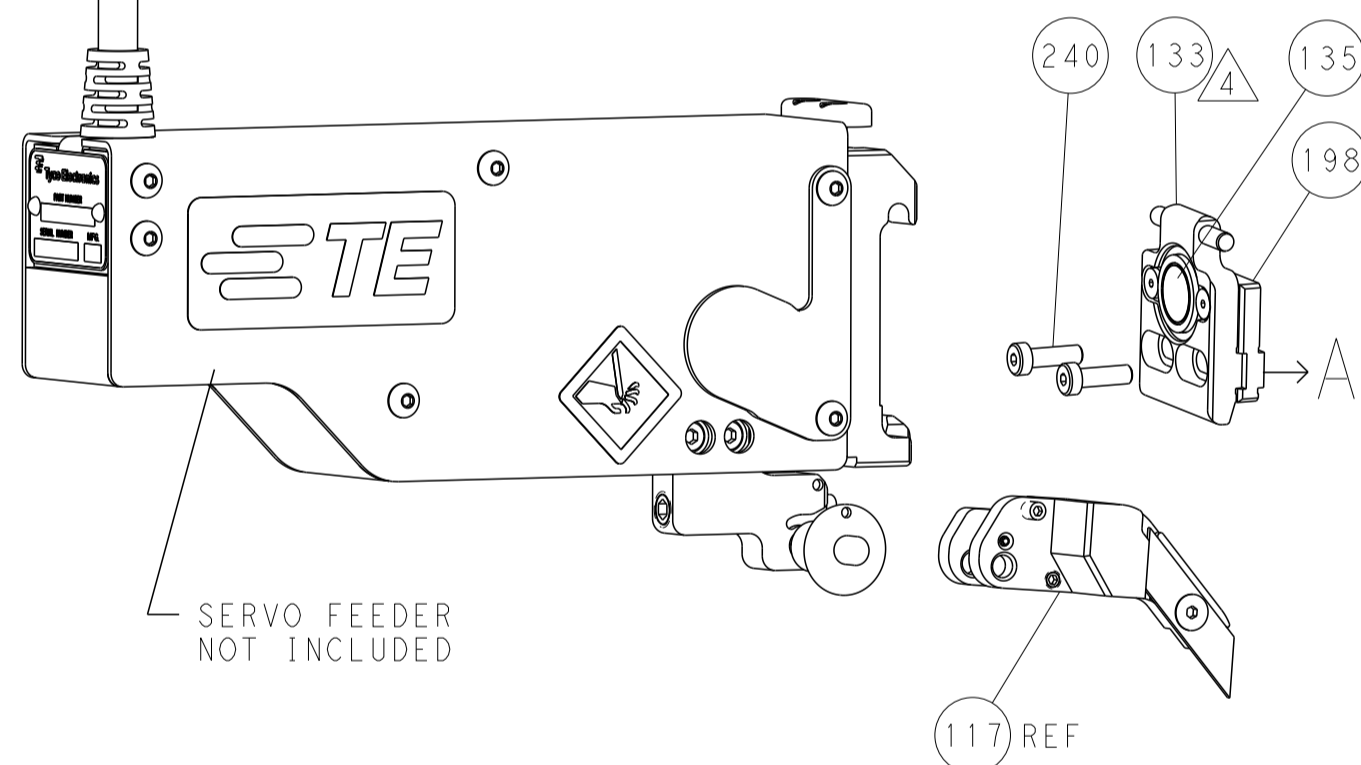
FEED TYPE MECHANICAL



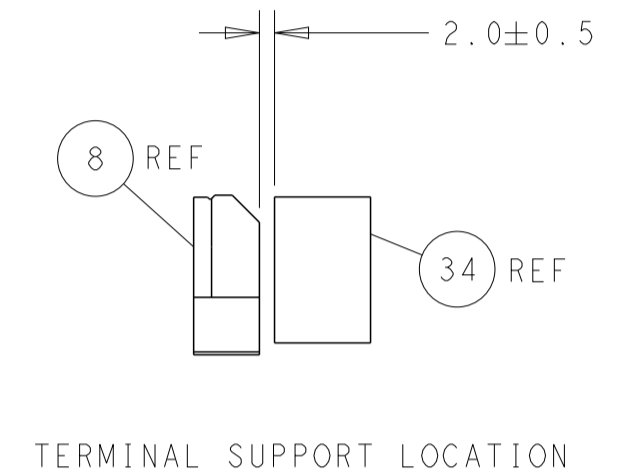
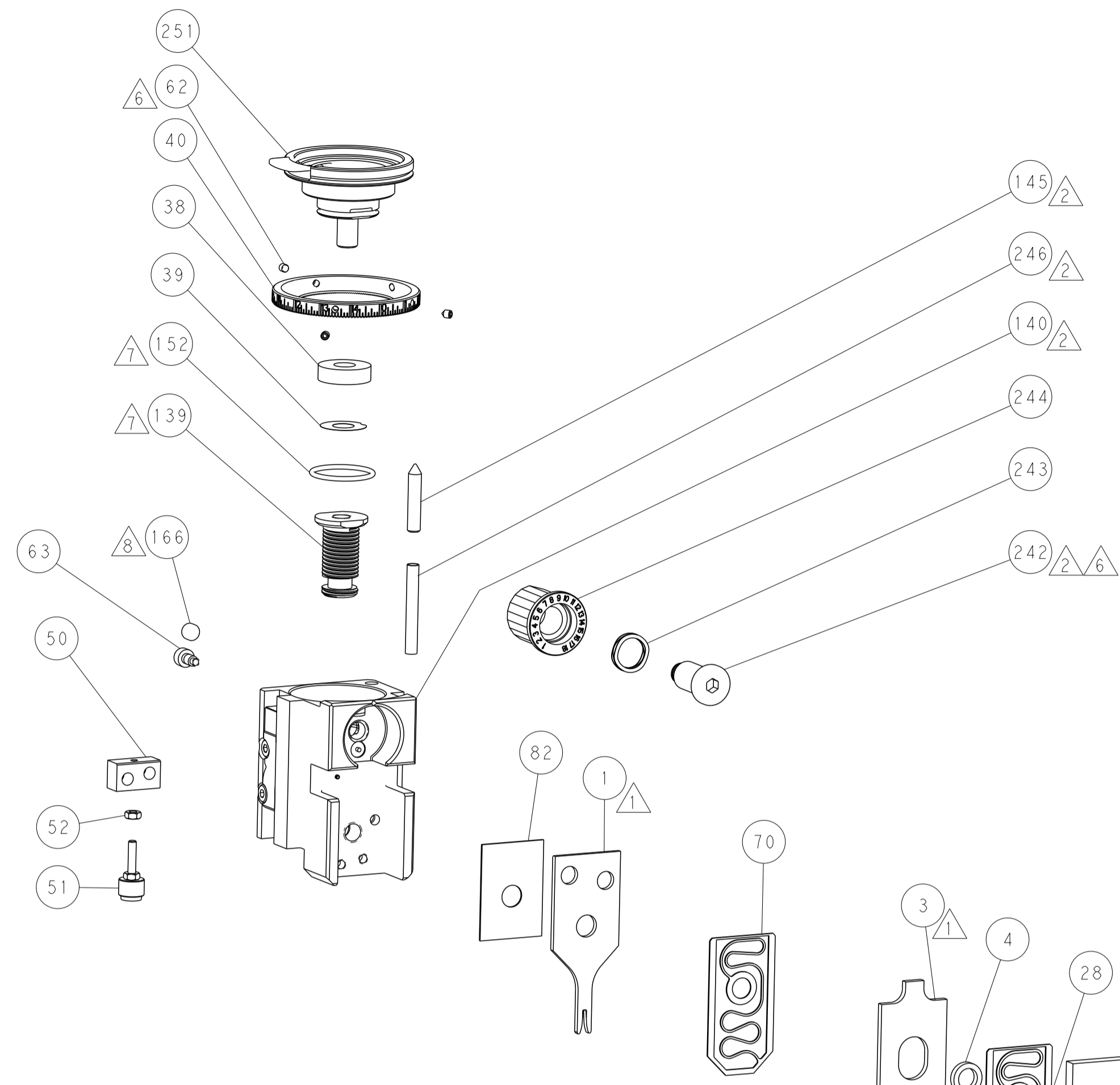
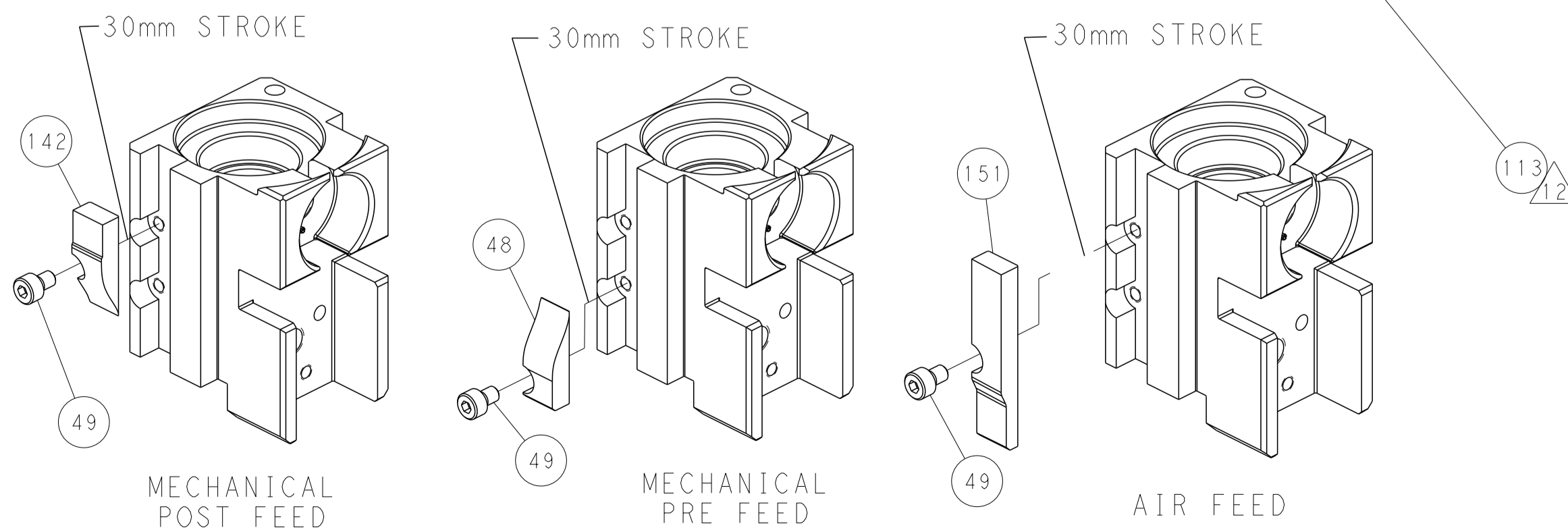
PNEUMATIC



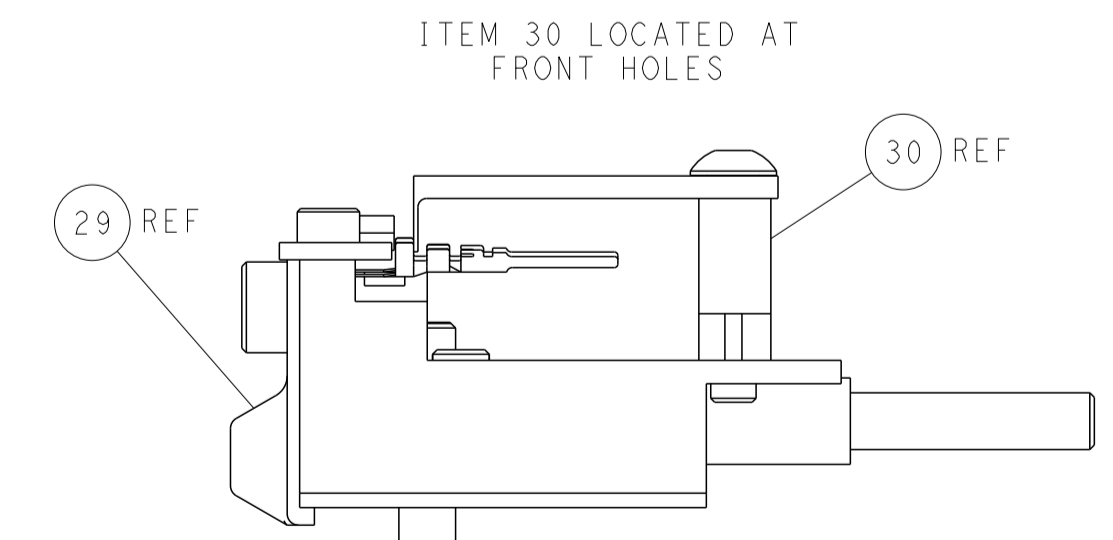
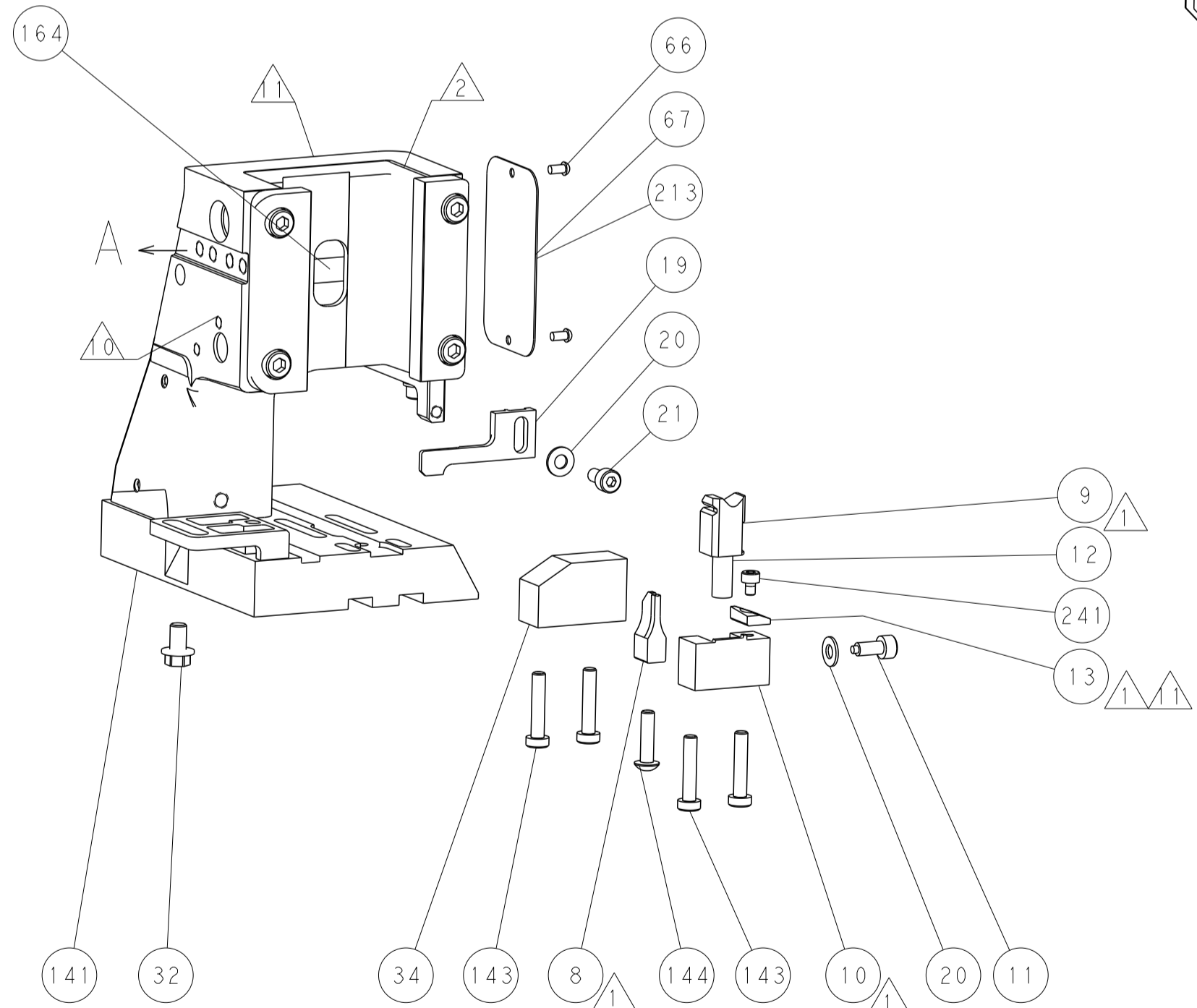
SERVO LATCH PLATE



CAM POSITIONS



TERMINAL SUPPORT LOCATION



FEED TRACK POSITION
GUIDE BY INSULATION BARREL

PACIFIC VERSION
 Shown on sheets 3 of 4 & 4 of 4
 (Atlantic version shown on sheets 1 of 4 & 2 of 4)

DIMENSIONS:		TOLERANCES UNLESS OTHERWISE SPECIFIED:		DWG: J. HOU TAUG2015		CHK: L. ZHANG TAUG2015		APVD: H. GUO TAUG2015		NAME: Ocean Side Feed Applicator	
mm	0 PLC ±	1 PLC ±	2 PLC ±	3 PLC ±	4 PLC ±	ANGLES ±	FINISH ±	WEIGHT	SCALE: 1:2	SHEET: 4	OF: 4
MATERIAL:		FINISH:		Customer Accessible Production Drawing		A1 00779 ©=2151651		RESTRICTED TO:		REV: B	