

CONSTRUCTION:

- BODY ----- ZINC ALLOY
- HOUSING ----- POLYESTER BUTYLENE TEREPHTHALATE (WHITE)
- CENTER CONTACT -- PHOSPHOR BRONZE
- DIELECTRIC ----- POLYPROPYLENE (94V0)
- MOUNTING POST --- BRASS
- SOLDER TAIL ----- COPPER OVER STEEL WIRE
- LOCK WASHER ----- PHOSPHOR BRONZE
- NUT ----- BRASS

FINISH:

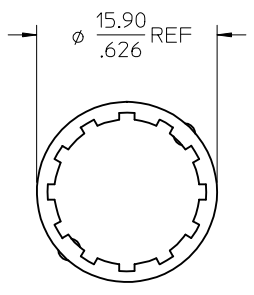
- BODY ----- NICKEL
- CENTER CONTACT -- GOLD
- SOLDER TAIL ----- TIN
- MOUNTING POST --- TIN
- LOCK WASHER ----- NICKEL
- NUT ----- NICKEL

PACKAGING ----- TRAY

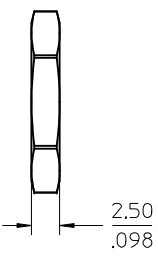
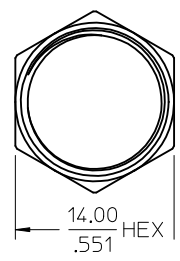
ENGINEERING SPEC

TEMPERATURE RATING: -55°C TO +85°C

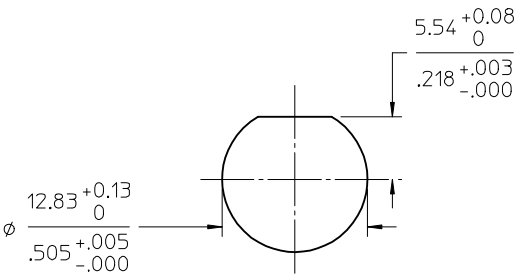
PART # 73131-5013



LOCKWASHER



JAM NUT



RECOMMENDED MOUNTING HOLE
 MAX PANEL THICKNESS: 5.5MM
 RECOMMENDED MOUNTING TORQUE:
 5 INCH-POUNDS MAX

PS-73598-0061	ELEC/MECH PERFORMANCE
SPECIFICATION	DESCRIPTION

CHG: PS -61 WAS 50 PP (94V0 WAS 94V2) PER RF14-E113	EC NO: URF2014-0545 DRWN: CWE102 2014/04/02 CHKD: APPR: MHIUANG 2014/04/16	DESCRIPTION
		REV

QUALITY SYMBOLS	GENERAL TOLERANCES (UNLESS SPECIFIED)
▽=0	4 PLACES ± --- ± ---
▽=0	3 PLACES ± --- ± ---
	2 PLACES ± --- ± ---
	1 PLACE ± --- ± ---
	ANGULAR ± 2 °

DRAFT WHERE APPLICABLE MUST REMAIN WITHIN DIMENSIONS
--

DIMENSION STYLE	SCALE	DESIGN UNITS	THIRD ANGLE PROJECTION
MM/IN		METRIC	
DRAWN BY	DATE	TITLE	
IRIS WANG	1991/01/21	BNC, JACK PCB VERTICAL 50 OHM BNC-JACK	
CHECKED BY	DATE		
APPROVED BY	DATE		
MATERIAL NO.	DOCUMENT NO.	SHEET NO.	
731315013	SD-73131-5013	1 OF 1	

MOLEX INCORPORATED	
THIS DRAWING CONTAINS INFORMATION THAT IS PROPRIETARY TO MOLEX INCORPORATED AND SHOULD NOT BE USED WITHOUT WRITTEN PERMISSION	