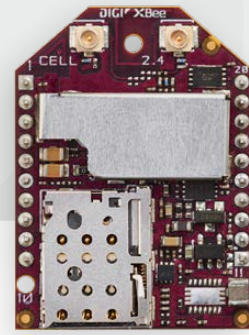




4G LTE CAT 1 CELLULAR
SMART MODEM



DIGI XBEE³ CELLULAR LTE CAT 1

Digi XBee3™ smart modems offer the easiest way to integrate cellular connectivity into an OEM device or IoT gateway.

Digi XBee3™ modules accelerate time to market for designers, OEMs and solution providers by quickly enabling wireless connectivity and easy-to-add functionality. Building on industry-leading technology, pre-certified Digi XBee3 modules offer the flexibility to switch between multiple frequencies and wireless protocols as needed.

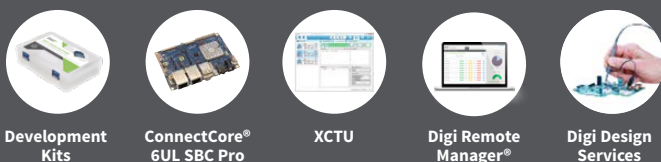
Ideal for moderate bandwidth (typically <25 MB per month) and low-cost IoT applications, Digi XBee3 Cellular LTE CAT 1 modules are cost-competitive with legacy 2G/3G standard devices.

With Digi Remote Manager®, XBee3 modules can be easily configured and controlled from a simple, central platform. Built-in Digi TrustFence® security, identity and data privacy features use more than 175 controls to protect against new and evolving cyber threats. Standard XBee API frames and AT commands, MicroPython and XCTU software tools simplify adding functionality, set-up, configuration and testing. Digi XBee3 modules are the latest addition to the expanding Digi XBee Ecosystem of wireless modules, adapters and software – all engineered to accelerate development and deployment.

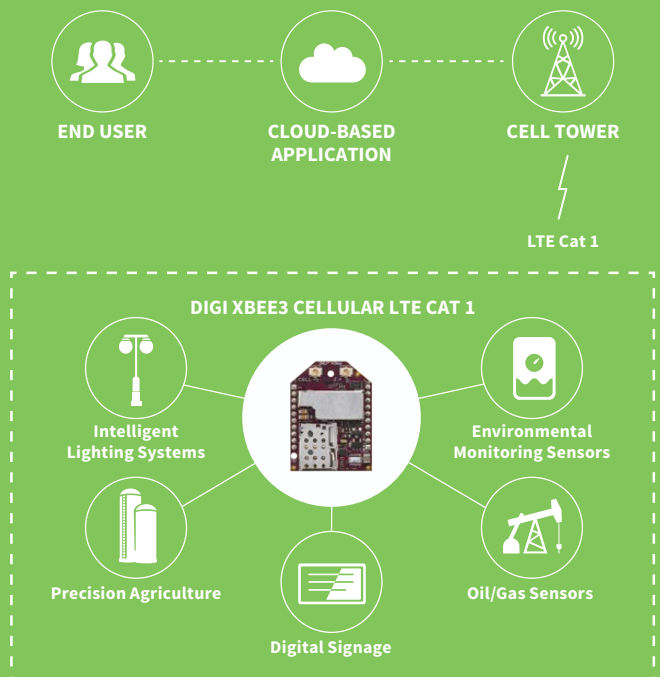
BENEFITS

- Integrated MicroPython programmability enables custom scripting directly on the modem
- XBee Transparent and API modes simplify s/w design
- 90 days of free cellular service with development kits
- FCC certified and carrier end-device certified for Verizon and AT&T
- Smallest end-device certified cellular modem
- Direct USB provides easy PPP integration option
- OTA firmware updates
- Enhanced with Digi TrustFence® security framework
- Manage and configure with XCTU and Digi Remote Manager®

RELATED PRODUCTS



APPLICATION EXAMPLE



SPECIFICATIONS

Digi XBee3® Cellular Smart Modem, LTE CAT 1

HARDWARE	
CELLULAR CHIPSET	Telit LE866A1-NA
FORM FACTOR	Digi XBee 20-pin through-hole
ANTENNA OPTIONS	1 U.FL: Cellular Primary, 1 U.FL: Cellular Diversity Embedded Bluetooth Antenna
DIMENSIONS	24.38 mm x 32.94 mm
OPERATING TEMPERATURE	-40° C to +80° C
SIM SIZE	4FF Nano
INTERFACE AND I/O	
DATA INTERFACE	UART, SPI, USB
OPERATING MODES	Transparent and API over serial, PPP over USB or Serial
SECURITY	Digi Trustfence® security with Secure Boot and Protected JTAG
CONFIGURATION TOOLS	Digi XCTU (Local), Digi Remote Manager (OTA)
EMBEDDED PROGRAMMABILITY	MicroPython with 32 KB Flash / 32 KB RAM
I/O	4 ADC lines (10-bit), 13 Digital I/O, I2C
BLUETOOTH	Bluetooth LE Ready
CELLULAR CHARACTERISTICS	
TRANSMIT POWER	Up to 23 dBm
RECEIVE SENSITIVITY	-102dBm
CARRIER APPROVALS	AT&T End Device Certified Verizon End Device Certification (Pending) Compatible with other LTE-CAT1 carriers, see band support
SUPPORTED BANDS	Bands 2,4,12 Verizon Band 4, 13 (Coming Soon)
DOWNLINK/UPLINK SPEEDS	10 Mbit/s Downlink, 5 Mbit/s Uplink (USB) 921 Kbit/s Downlink and Uplink (UART)
DUPLEX MODE	Full-Duplex
POWER REQUIREMENTS (AT 3.3VDC INPUT POWER)	
SUPPLY VOLTAGE	3.0 to 5.5V
PEAK TRANSMIT CURRENT	1000mA Bluetooth Disabled 1060mA Bluetooth Enabled
AVG TRANSMIT CURRENT	850mA
AVG RECEIVE CURRENT	TBD
POWER SAVE MODE	TBD
REGULATORY AND CARRIER APPROVALS	
FCC (USA)	MCQ-XB3C1
IC (CANADA)	1846A-XB3C1
VERIZON END-DEVICE CERTIFIED	Pending
AT&T END-DEVICE CERTIFIED	Complete
PTCRB	Complete

PART NUMBERS

DESCRIPTION

XK3-C-A1-UT-001	Digi XBee3 Cellular Smart Modem, LTE CAT 1, North America
XK3-C-A1-UT-U	Digi XBee3 Cellular Smart Modem, LTE CAT 1, Development Kit, AT&T

DIGI SERVICE AND SUPPORT / You can purchase with confidence knowing that Digi is always available to serve you with expert technical support and our industry leading warranty. For detailed information visit www.digi.com/support.

© 1996-2018 Digi International Inc. All rights reserved.
All trademarks are the property of their respective owners.

91004232
A2/1217

DIGI INTERNATIONAL WORLDWIDE HQ
877-912-3444 / 952-912-3444 / www.digi.com

DIGI INTERNATIONAL GERMANY
+49-89-540-428-0

DIGI INTERNATIONAL JAPAN
+81-3-5428-0261 / www.digi-intl.co.jp

DIGI INTERNATIONAL SINGAPORE
+65-6213-5380

DIGI INTERNATIONAL CHINA
+86-21-50492199 / www.digi.com.cn

