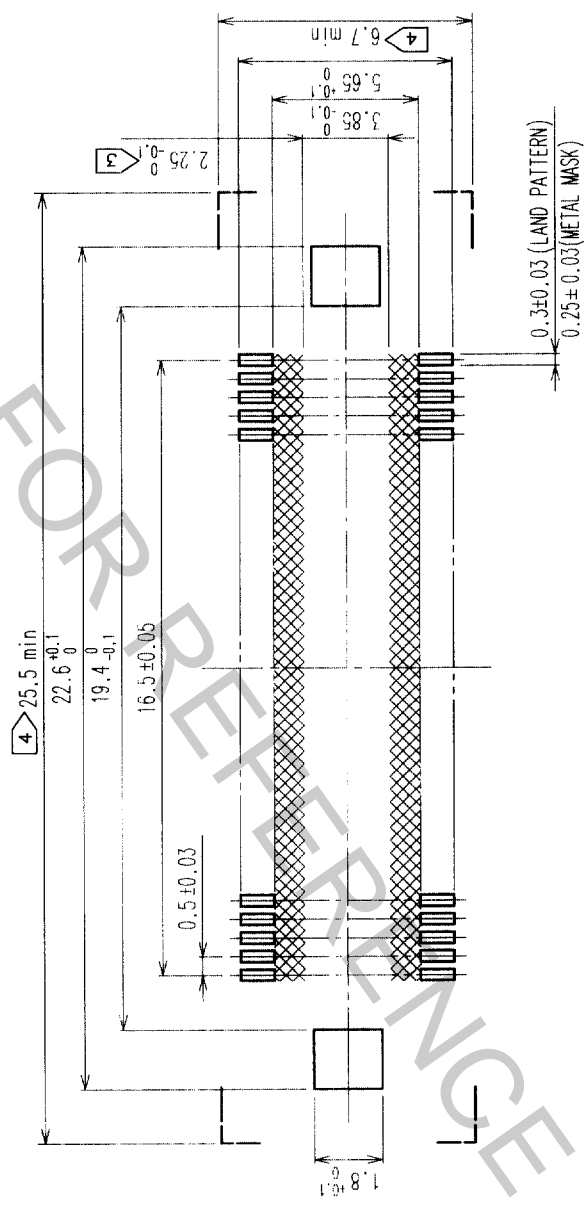
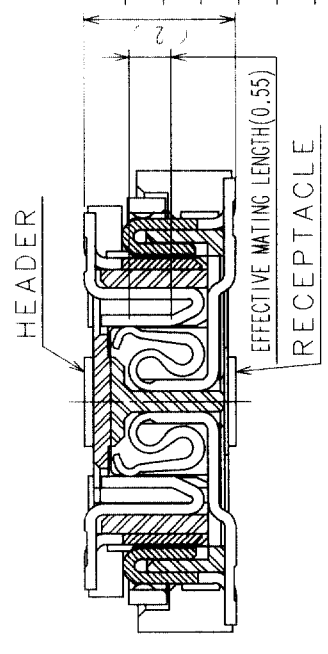


RECOMMENDED LAND PATTERN DIMENSION OF PCB



SIGNAL PORTION CROSS SECTION (10:1)



- NOTES
- 1 SMT LEAD-COPLANARITY:0.1 MAX.
  - 2 THIS PRODUCT HAS NO POLARITY TO PATTERN FOR MOUNTING.
  - 3 MAKE SURE WIDTH OF PATTERN IS WITHIN THAT OF LAND ,OR LEAD MAY TOUCH PATTERN. (THIS APPLIES TO HATCHED AREA.)
  - 4 DO NOT MOUNT OTHER DEVICES ONTO [ ] AREA ,OR MATING PAIR CANNOT BE MATED.

2	COPPER ALLOY	CONTACT AREA:GOLD(0.1μm) OVER NICKEL
1	LCP	LEAD:GOLD FLASH OVER NICKEL
NO.	MATERIAL	FINISH, REMARKS
CODE NO. (OLD)	CL	
CODE NO. (NEW)	CL	
DESIGNED	S.Kitajima	990525
CHECKED	J.Matsukawa	990525
APPROVED	M.Ishida	990526
RELEASED	Y.Yoshimura	990527
DRAWN	S.Kitajima	990525
PHOSPHOR BRONZE	3	TIN PLATED
PART NO.	FX11LB-68P-SV	
DRAWING NO.	EDC3-152104	
SCALE	5:1	
UNITS	mm	
CODE NO.	CL573-0052-5	
FORM NO.	229	

TO PCK