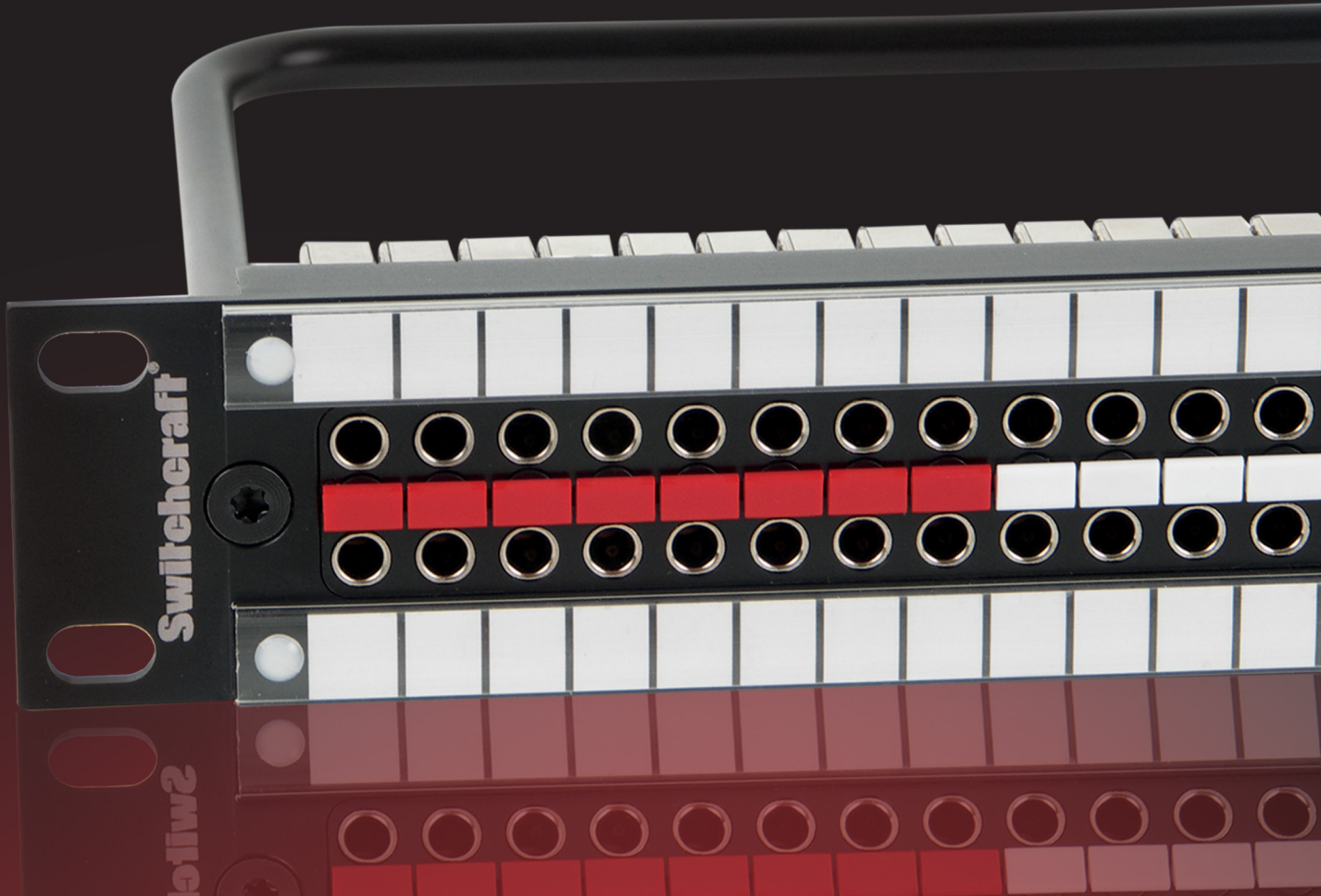
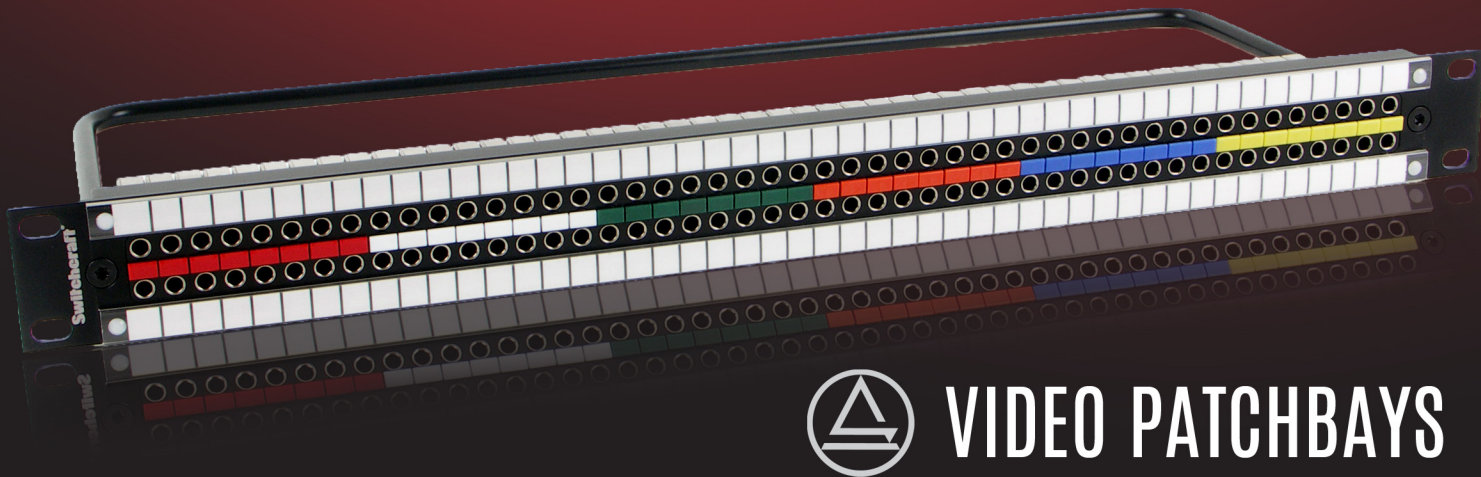


**Switchcraft®
Pro Audio**



HIGH DEFINITION
VIDEO PATCHBAYS





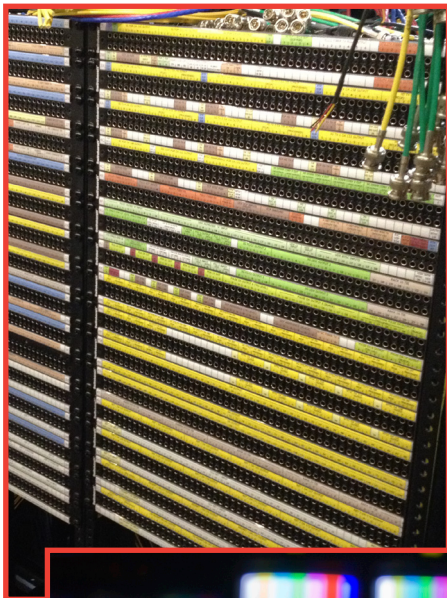
VIDEO PATCHBAYS

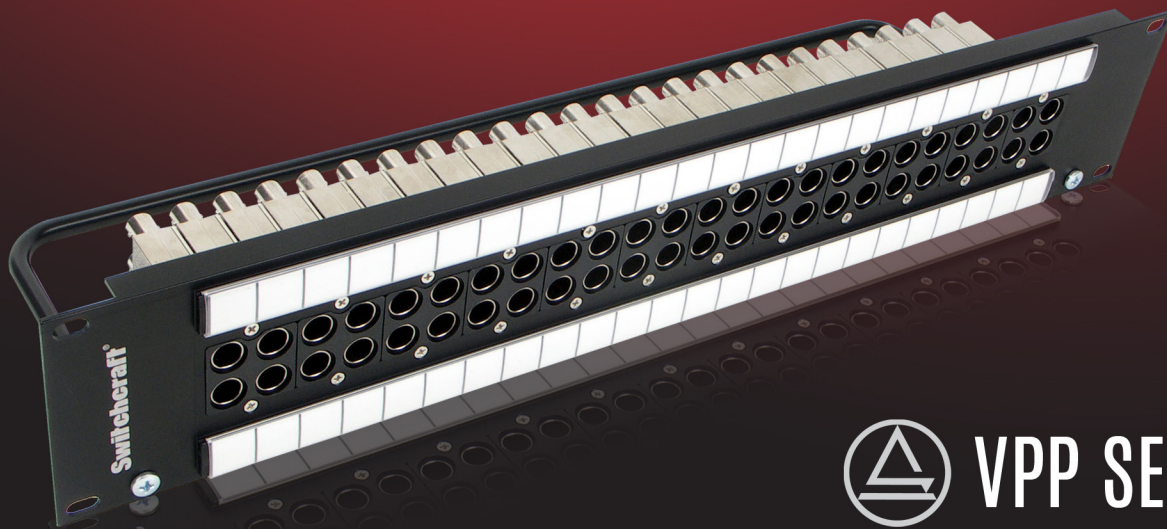
Today's high definition broadcast facilities & mobile production units require the most technologically advanced equipment to ensure high quality distribution and processing of audio and video signals. With a broad line of patented audio, video and data patching products, Switchcraft® has been an integral part of this process for decades.

Founded in 1946, Switchcraft® is widely recognized as the world's leading manufacturer of professional audio and video interconnect products. Our team of designers, engineers, sales, marketing and manufacturing professionals work together in our 190,000 square foot facility to ensure the highest quality standards are met in every product we build. **Unlike other manufacturers, our finished products and nearly all of the components they consist of are designed, produced, assembled and tested in one facility (our Chicago, IL world headquarters). This gives us the ability to control every aspect of the design, manufacturing and assembly process from start to finish.**

Our VPP (Standard WECO), MVP (Mini WECO) and MMVP (Micro) Video Patchbays are used to patch high definition video in the world's largest broadcast facilities and mobile production units. All of our video patchbay products meet or exceed SMPTE ST 424:2006 specifications. **The new MMVP Micro Video Patchbay offers the highest level of density - 96 patchpoints in 1RU!**

We also offer a broad line of accessory products for all of our patchbays, including patchcords, insertion/withdrawal tools, terminating/looping plugs, adapters, color coded channel identification chips, cable mount BNC and DIN 1.0/2.3 connectors.





VPP SERIES

FEATURES & BENEFITS

- Meets SMPTE ST 424:2006
- Rated to 3GHz
- Industry standard 75 Ohm BNC input/output connections
- Screw in, all metal jack design withstands vibration in mobile applications
- Proven, patented design (MVJ mid-size video jack)
- Cable tie bar for easy cable management
- Snap in designation strips
- Rated to 30,000 insertion/withdrawal cycles

OPTIONS

- 1RU and 2RU rack heights
- Normalled, non-normalled, terminated and non-terminated
- Accessories include true 75 Ohm cable mount BNC connectors
- Single video jacks, looping plugs and BNC to patch adapters also available

* See accessories page for more details

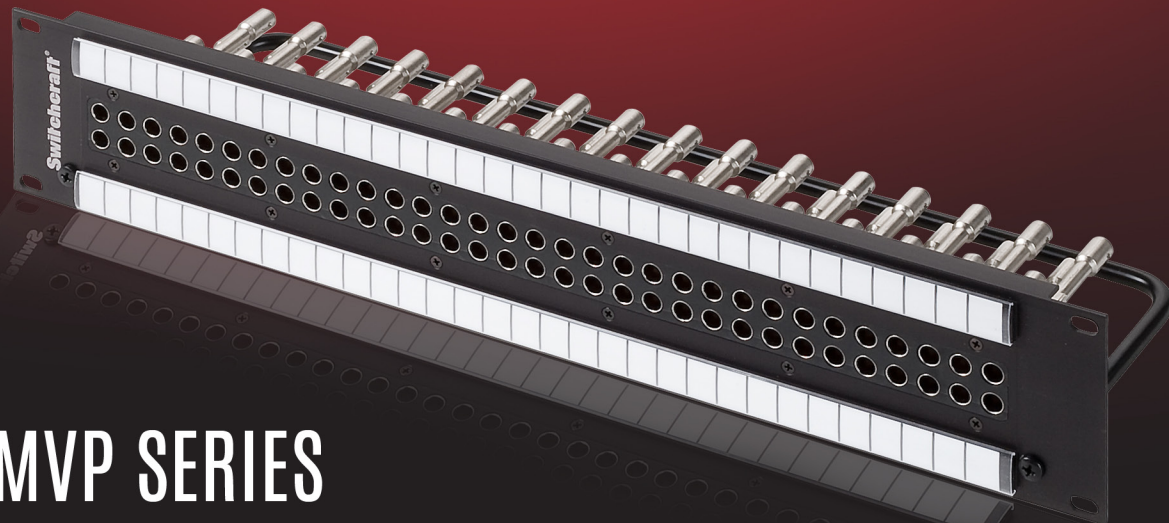
VPP VIDEO PATCHBAYS

Standard WECO (2x24 or 2x26) high definition video patchbays.

Number of Jacks	Rack Height	Normalling	75Ω Termination	Part Number
2X24	1RU	Normalled	Terminated	VPP24K1HD75T
			Non-Terminated	VPP24K1HDNT
		Non-Normalled	Terminated	VPP24K1HDN75T
			Non-Terminated	VPP24K1HDNNT
	2RU	Normalled	Terminated	VPP24K3HD75T
			Non-Terminated	VPP24K3HDNT
Non-Normalled		Terminated	VPP24K3HDN75T	
		Non-Terminated	VPP24K3HDNNT	
2X26	1RU	Normalled	Terminated	VPP26K1HD75T
			Non-Terminated	VPP26K1HDNT
		Non-Normalled	Terminated	VPP26K1HDN75T
			Non-Terminated	VPP26K1HDNNT
	2RU	Normalled	Terminated	VPP26K3HD75T
			Non-Terminated	VPP26K3HDNT
		Non-Normalled	Terminated	VPP26K3HDN75T
			Non-Terminated	VPP26K3HDNNT



MVP SERIES



FEATURES & BENEFITS

- Meets SMPTE ST 424:2006
- Rated to 3GHz
- Industry standard Ohm BNC input/output connections
- Screw in, all metal jack design withstands vibration in mobile applications
- Proven, patented design (MVJ mid-size video jack)
- Cable tie bar for easy cable management
- Snap in designation strips
- Rated to 30,000 insertion/withdrawal cycles

OPTIONS

- 1RU, 1.5RU and 2RU rack heights
 - Normalled, non-normalled, terminated and non-terminated
 - Accessories include true 75 Ohm cable mount BNC connectors
 - Single video jacks, looping plugs, patch plugs and BNC to patch adapters also available
- * See accessories page for more details

MVP VIDEO PATCHBAYS

Mid-size WECO (2x32 or 2x34) high definition video patchbays.

Number of Jacks	Rack Height	Normalling	75Ω Termination	Part Number
2x32	1RU	Normalled	Terminated	MVP32K175T
			Non-Terminated	MVP32K1NT
	Non-Normalled	Terminated	MVP32K1N75T	
		Non-Terminated	MVP32K1NNT	
	1.5RU	Normalled	Terminated	MVP32K275T
			Non-Terminated	MVP32K2NT
Non-Normalled	Terminated	MVP32K2N75T		
	Non-Terminated	MVP32K2NNT		
2RU	Normalled	Terminated	MVP32K375T	
		Non-Terminated	MVP32K3NT	
	Non-Normalled	Terminated	MVP32K3N75T	
		Non-Terminated	MVP32K3NNT	
2x34	1RU	Normalled	Terminated	MVP34K175T
			Non-Terminated	MVP34K1NT
	Non-Normalled	Terminated	MVP34K1N75T	
		Non-Terminated	MVP34K1NNT	
	1.5RU	Normalled	Terminated	MVP34K275T
			Non-Terminated	MVP34K2NT
	Non-Normalled	Terminated	MVP34K2N75T	
		Non-Terminated	MVP34K2NNT	
	2RU	Normalled	Terminated	MVP34K375T
			Non-Terminated	MVP34K3NT
	Non-Normalled	Terminated	MVP34K3N75T	
		Non-Terminated	MVP34K3NNT	



MMVP SERIES

FEATURES & BENEFITS

- Meets SMPTE ST 424:2006
- Rated to 3GHz
- Industry standard DIN 1.0/2.3 input/output connections
- Screw in, all metal jack design withstands vibration in mobile applications
- Based on the proven, reliable, patented technology of our MVJ Series of HD video jacks
- Cable tie bar for easy cable management
- Snap in designation strips
- Rated to 20,000 insertion/withdrawal cycles

OPTIONS

- 1RU, 1.5RU and 2RU rack heights (1RU height for AES Digital Audio version)
- Normalled, non-normalled, terminated and non-terminated
- Color coding system for easy channel identification
- **Available with red frame to distinguish AES/EBU digital audio from HD video**
- Accessories include DIN 1.0/2.3 insertion/withdrawal tool, looping plugs, channel identification chips and DIN 1.0/2.3 cable mount connectors

MMVP MICRO VIDEO PATCHBAYS

High density (2x48) high definition video patchbays for video and AES digital audio patching in broadcast, mobile production, post production, etc.

Number of Jacks	Rack Height	Normalling	75Ω Termination	Part Number
2x48	1RU	Normalled	Terminated	MMVP48K175T
			Non-Terminated	MMVP48K1NT
		Non-Normalled	Terminated	MMVP48K1N75T
			Non-Terminated	MMVP48K1NNT
	1.5RU	Normalled	Terminated	MMVP48K275T
			Non-Terminated	MMVP48K2NT
		Non-Normalled	Terminated	MMVP48K2N75T
			Non-Terminated	MMVP48K2NNT
2RU	Normalled	Terminated	MMVP48K375T	
		Non-Terminated	MMVP48K3NT	
	Non-Normalled	Terminated	MMVP48K3N75T	
		Non-Terminated	MMVP48K3NNT	
4x48	1.5RU	Normalled	Terminated	MMVP96K275T
			Non-Terminated	MMVP96K2NT
		Non-Normalled	Terminated	MMVP96K2N75T
			Non-Terminated	MMVP96K2NNT
	2RU	Normalled	Terminated	MMVP96K375T
			Non-Terminated	MMVP96K3NT
		Non-Normalled	Terminated	MMVP96K3N75T
			Non-Terminated	MMVP96K3NNT

Number of Jacks	Rack Height	Normalling	75Ω Termination	Part Number
2x48	1RU	Normalled	Terminated	MMVP48K175TAES
			Non-Terminated	MMVP48K1NTAES
		Non-Normalled	Terminated	MMVP48K1N75TAES
			Non-Terminated	MMVP48K1NNTAES




ACCESSORIES

Patchbay Type	Accessory	Part Number
VPP (Standard)	Standard WECO Patch Plug to BNC Adapter	VPBNCF
	Standard WECO Looping Plug	VSLP
	Standard WECO Looping Plug (75 Ohm Terminated)	VSLP75T
MVP (Mini)	Mini WECO Looping Plug	VMLP
	Mini WECO Looping Plug (75 Ohm Terminated)	VMLP75T
	Mini WECO Patch Plug	VMPP
	Mini WECO Patch Plug to BNC Adapter	VMPBNCF
MMVP (Micro)	Micro Video Looping Plug (NEW)	VMMLP
	DIN 1.0/2.3 Insertion/Withdrawal Tool	MMVPTL
	60MMVP Color Chips, 10 of each	K600
	50MMVP Color Chips, Red	K6002D
	50MMVP Color Chips, Orange	K6003B
	50MMVP Color Chips, Yellow	K6004B
	50MMVP Color Chips, Green	K6005N
	50MMVP Color Chips, Blue	K6006L
50MMVP Color Chips, White	K6009B	

Video Patchcord Part Numbering System:

Micro Video Patchcord:
VMMP (Prefix)
 1-10 (Length in Feet)
 BK = Black
 R = Red
 O = Orange
 GN = Green
 BL = Blue
 GY = Gray
 Y = Yellow

Color

Example = VMMP2BK
 (Micro Video Patchcord, 2 ft., Black)

Mid-Size Video Patchcord:

VMP (Prefix)
 1-10 (Length in Feet)
 BK = Black
 R = Red
 O = Orange
 GN = Green
 BL = Blue
 GY = Gray
 Y = Yellow

Color

Example = VMP2BK
 (Mid-Size Video Patchcord, 2 ft., Black)

Standard-Size Video Patchcord:

VP (Prefix)
 1-10 (Length in Feet)
 BK = Black
 R = Red
 O = Orange
 GN = Green
 BL = Blue
 GY = Gray
 Y = Yellow

Color

Example = VP2BK
 (Standard Video Patchcord, 2 ft., Black)

DIN 1.0/2.3 Connectors	Most Common Compatible Cabling
DIN1855A	Belden 1855A, Gepco VDM230
DIN1855ENH	Belden 1855ENH
DIN179DT	Belden 179DT
DIN1505A	Belden 1505A, Gepco VPM2000, Gepco VHD2000M
DIN1694A	Belden 1694A, Gepco VSD2001, Gepco VHD2001M
True 75 OHM BNC Connectors	Most Common Compatible Cabling
HP75BNC12X	Belden 1855A, Gepco VDM230
HP75BNC1X	Belden 8241
HP75BNC2X	Belden 8281B
HP75BNC6X	Belden 1695A, Gepco VSD2001TS
HP75BNC7X	Belden 1694A, Gepco VSD2001, Draka 1.0/4.8AF
HP75BNC9X	Belden 1505A, Gepco VPM2000, Draka 0.8/3.7AF, Draka 0.8/3.7DZ