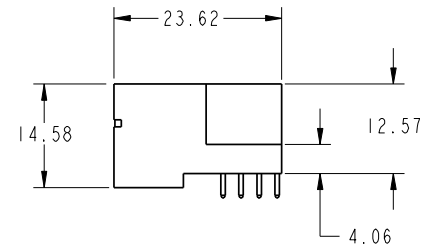
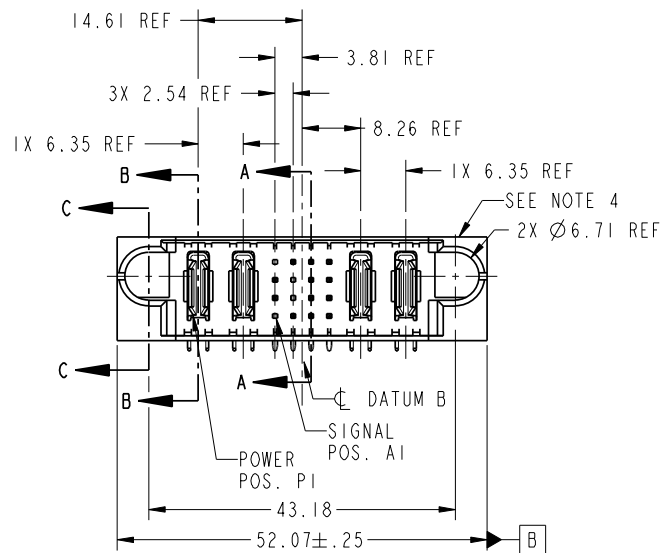


Tous droits strictement réservés. Reproduction ou communication a des tiers interdite sous quelque forme que ce soit sans autorisation écrite du propriétaire. Propriété de c FCI. Droits de reproduction FCI.



All rights strictly reserved. Reproduction or issue to third parties in any form whatever is not permitted without written authority from the proprietor. Property of FCI. Copyright FCI.

PRODUCT NO.	ROWS	POWER		SIGNAL				POWER		E2	
		E1	P1	P2	1	2	3	4	P3		P4
51730-130-- NOTE 3	D C B A										



CODE	DIM "M" MATING LENGTH	CONTACT TYPE
T	[6.86]	SIGNAL
U	[6.86]	SIGNAL
R	[6.86]	SIGNAL
S	[6.86]	SIGNAL
PA	[N/A]	POWER
H	[5.59]	SIGNAL
E	[5.59]	SIGNAL
X	OMITTED	OMITTED

mat'l code				SEE NOTE		tolerances unless otherwise specified		CUSTOMER		FCI		www.fciconnect.com	
lir	ecn no.	dr	date	linear	0.X ±0.3	projection		COPY		title			
A	DG07-0018	JULIA	01/15/07		0.XX ±0.13	MM				2P + 16S + 2P			
B	DG07-0192	JULIA	04/05/07	angles	0.XXX ±0.051	1:1				RIGHT ANGLE SOLDER HEADER			
				dr	JULIA WANG 01/15/07					product family		PwrBlade	
				enrg	RYAN YUAN 01/15/07					size		213	
				chr	BEER FU 01/15/07					dwg no		51730-130	
				appd	JOSEPH HSIA 01/15/07					A		sheet 1 of 4	
sheet index	revision	B	B	B	B								
	sheet	1	2	3	4								

cage code 22526

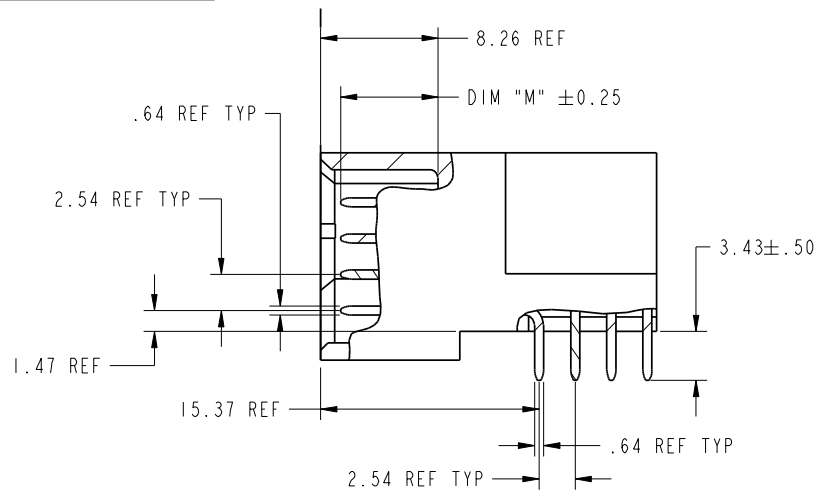
Pro/E

Tous droits strictement reserves. Reproduction ou communication a des tiers interdite sous quelque forme que ce soit sans autorisation écrite du propriétaire. Propriete de c FCI. Droits de reproduction FCI.

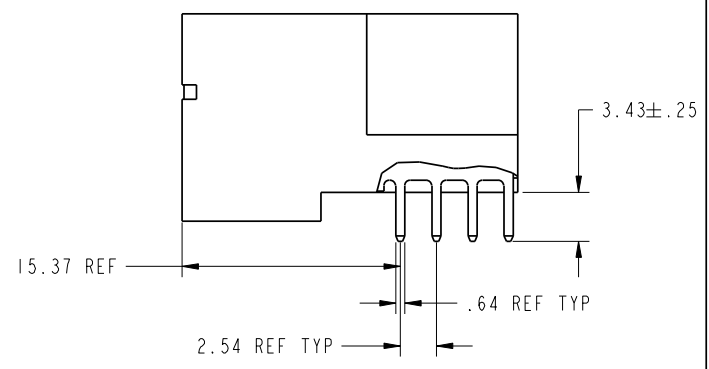


All rights strictly reserved. Reproduction or issue to third parties in any form whatever is not permitted without written authority from the proprietor. Property of FCI. Copyright FCI.

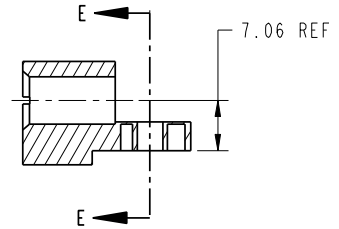
PRODUCT NUMBER
51730-130--
NOTE: 3



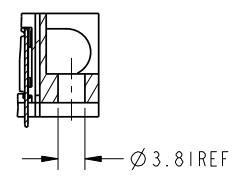
BROKEN-OUT SECTION A-A
SCALE 2:1



BROKEN-OUT SECTION B-B
SCALE 2:1



SECTION C-C



PARTIAL SECTION E-E

mat'l code				SEE NOTE		tolerances unless otherwise specified		CUSTOMER		FCI		
lfr	ecn no.	dr	date	linear	0.X ±0.3	projection		COPY		www.fciconnect.com		
B				angles	0.XX ±0.13	MM		title		2P + 16S + 2P		
				dr	0.XXX ±0.051	1:1		RIGHT ANGLE SOLDER HEADER		product family PwrBlade		
				enrg	JULIA WANG 01/15/07			size		code 213		
				chr	RYAN YUAN 01/15/07			dwg no		sheet		
				appd	BEER FU 01/15/07			A 51730-130		2 of 4		
					JOSEPH HSIA 01/15/07							
sheet index	revision sheet											

cage code 22526

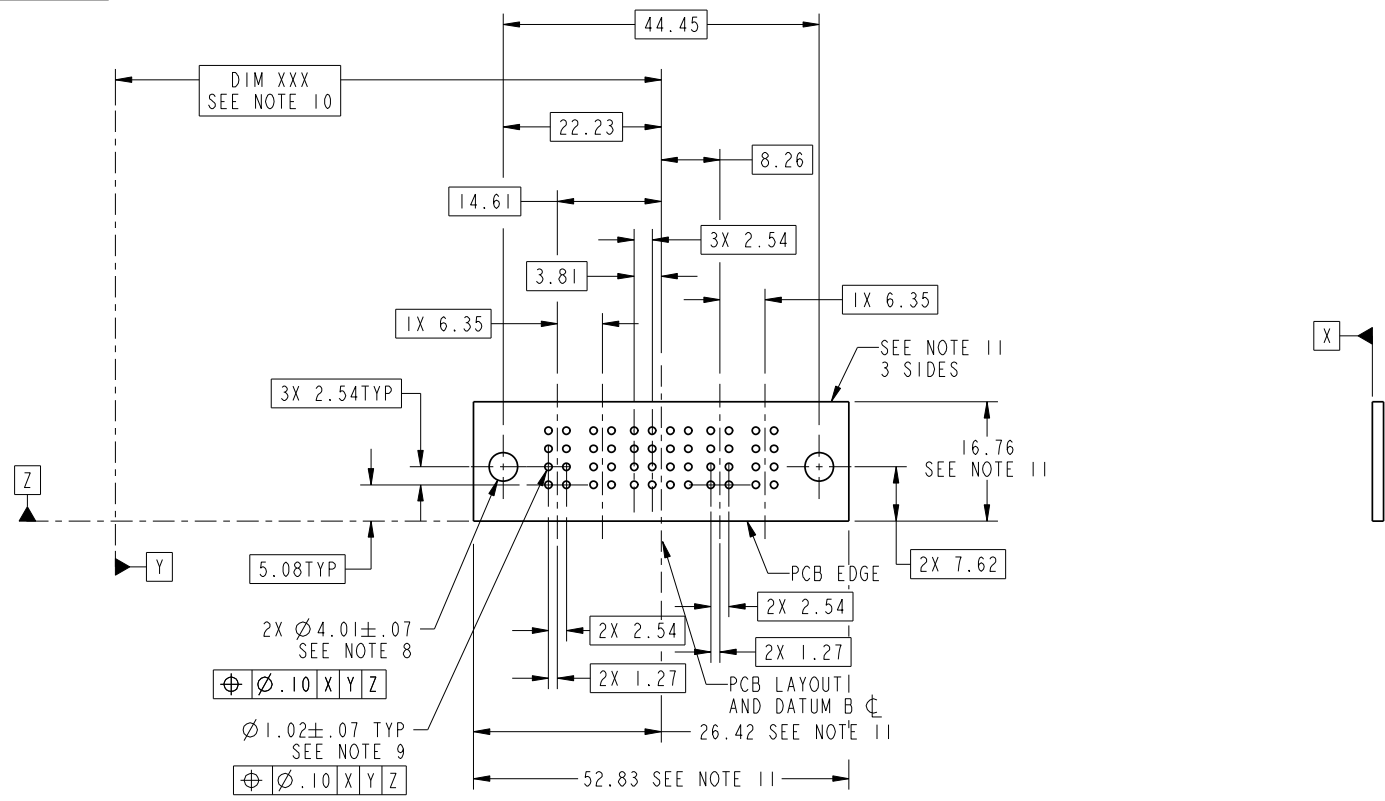
Pro/E

Tous droits strictement reserves. Reproduction ou communication a des tiers interdite sous quelque forme que ce soit sans autorisation écrite du propriétaire. Propriete de c FCI. Droits de reproduction FCI.



All rights strictly reserved. Reproduction or issue to third parties in any form whatever is not permitted without written authority from the proprietor. Property of FCI. Copyright FCI.

PRODUCT NUMBER
51730-130--
NOTE: 3



RECOMMENDED PCB LAYOUT

mat'l code				SEE NOTE		tolerances unless otherwise specified		CUSTOMER		 www.fciconnect.com		
lfr	ecn no.	dr	date	linear	0.X ± 0.3	COPY		projection		title		
B				angles	0.XX ± 0.13					2P + 16S + 2P RIGHT ANGLE SOLDER HEADER		
				dr	0.XXX ± 0.051	JULIA WANG 01/15/07				product family PwrBlade code 213		
				enr	0° ± 2°	RYAN YUAN 01/15/07		MM		size		
				chr		BEER FU 01/15/07		1:1		dwg no 51730-130		
				appd		JOSEPH HSIA 01/15/07				sheet 3 of 4		
sheet index	revision sheet											

cage code 22526

Pro/E

Tous droits strictement reserves. Reproduction ou communication a des tiers interdite sous quelque forme que ce soit sans autorisation écrite du propriétaire. Propriete de c FCI. Droits de reproduction FCI.



All rights strictly reserved. Reproduction or issue to third parties in any form whatever is not permitted without written authority from the proprietor. Property of FCI. Copyright FCI.

PRODUCT NUMBER
51730-130--
NOTE: 3

NOTES:

1. DIMENSIONS AND TOLERANCES ARE IN ACCORDANCE WITH ASME Y14.5M, 1994 UNLESS OTHERWISE SPECIFIED.

CONNECTOR NOTES:

- 2. HOUSING MATERIAL: UL 94 V-0 GLASS FILLED HIGH-TEMP THERMOPLASTIC
POWER CONTACT MATERIAL: COPPER ALLOY
SIGNAL PIN MATERIAL: COPPER ALLOY
- 3. 51730-130;51730-130LF;51730-130GLF PLATING SPEC. SEE PRINT:10064183
- 4. MANUFACTURER'S NAME, P/N, AND DATE CODE TO APPEAR ON THIS SURFACE.
- 5. PRODUCT SPECIFICATION GS-12-149.
APPLICATION SPECIFICATION BUS-20-067.
- 6. PACKAGED IN TRAYS.

PCB NOTES:

- 7. ALL HOLE DIAMETERS ARE FINISHED HOLE SIZE.
- 8. MOUNTING HOLES, WHERE APPLICABLE, ARE UNPLATED.
- 9. $\varnothing 1.151 \pm 0.025$ DRILLED HOLES PLATED WITH 0.008 MIN SnPb OR Sn OVER 0.03 TO 0.08 Cu PLATING TO ACHIEVE $\varnothing 1.02 \pm .07$ HOLE.
- 10. "DIM XXX" TO BE DETERMINED BY THE CUSTOMER.
- 11. CONNECTOR KEEP-OUT ZONE.

mat'l code				SEE NOTE		tolerances unless otherwise specified		CUSTOMER		FCI		www.fciconnect.com	
lfr	ecr no.	dr	date	linear	0.X ± 0.3	COPY		projection		title			
B					0.XX ± 0.13					2P + 16S + 2P			
				angles	0.XXX ± 0.051					RIGHT ANGLE SOLDER HEADER			
				dr	0° ± 2°			MM		product family		PwrBlade	code
				enrg	JULIA WANG 01/15/07			scale		size		dwg no	213
				chr	RYAN YUAN 01/15/07			1:1		A		51730-130	sheet
				appd	BEER FU 01/15/07							4 of 4	
					JOSEPH HSIA 01/15/07								
sheet index	revision sheet												

cage code 22526

Pro/E