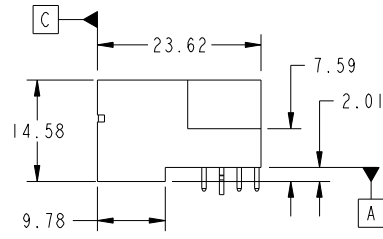
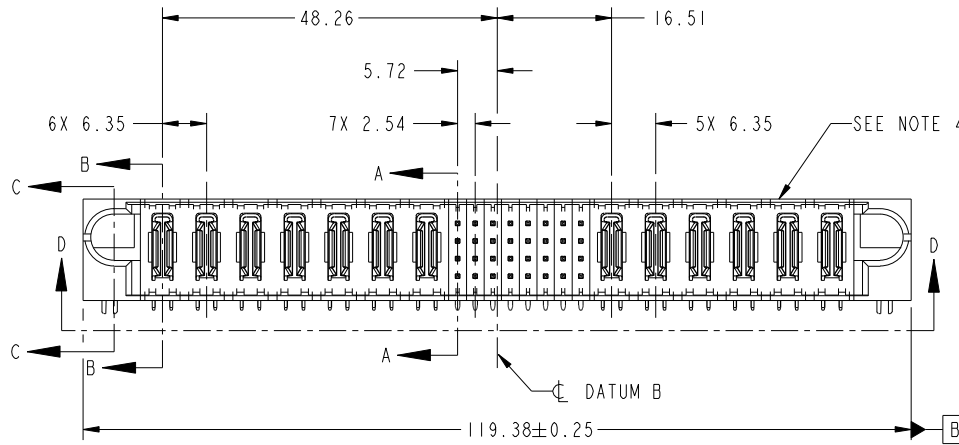


Tous droits strictement réservés. Reproduction ou communication a des tiers interdite sous quelque forme que ce soit sans autorisation écrite du propriétaire. Propriete de c FCI. Droits de reproduction FCI.

All rights strictly reserved. Reproduction or issue to third parties in any form whatever is not permitted without written authority from the proprietor. Property of FCI. Copyright FCI.



PRODUCT NO.	ROWS	POWER						SIGNAL								POWER									
		E1	P1	P2	P3	P4	P5	P6	P7	1	2	3	4	5	6	7	8	P8	P9	P10	P11	P12	P13	E2	
51730-139_	D C B A	HA	PA	PA	PA	PA	PA	PA	PA	UUUUUUUU	UUUUUUUU	UUUUUUUU	UUUUUUUU	UUUUUUUU	UUUUUUUU	UUUUUUUU	UUUUUUUU	UUUUUUUU	UUUUUUUU	UUUUUUUU	UUUUUUUU	UUUUUUUU	UUUUUUUU	UUUUUUUU	HA



CODE	DIM "M" MATING LENGTH	CONTACT TYPE
G	[5.59]	SIGNAL
R	[6.86]	SIGNAL
S	[6.86]	SIGNAL
T	[6.86]	SIGNAL
U	[6.86]	SIGNAL
PA	[N/A]	POWER
HA	[N/A]	HOLD-DOWN

mat'l code				0		tolerances unless otherwise specified		CUSTOMER	
ltr	ecn no.	dr	date	linear	0.X ±0.3	angles	0° ±2°	projection	MM
A	DG07-0481	JC	12/03/07		0.XX ±0.13			scale	1:1
				dr	Jerome Chen	11/09/07			
				enr	Jerome Chen	11/09/07			
				chr	Gary Hsieh	11/09/07			
				appd	Joseph Hsia	11/09/07			
sheet index	revision sheet	A	A	A	A	A	A		
		1	2	3	4				

CUSTOMER		FCI	
COPY		www.fciconnect.com	
title		7P + 32S + 6P RIGHT ANGLE SOLDER HEADER	
product family	PwrBlade	code	213
size	A	dwg no	51730-139
		sheet	1 of 4

Pro/E	3	4
-------	---	---

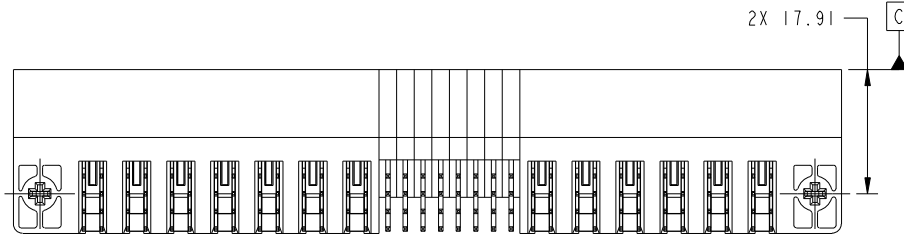
cage code	22526	4
-----------	-------	---

Tous droits strictement reserves. Reproduction ou communication a des tiers interdite sous quelque forme que ce soit sans autorisation écrite du propriétaire. Propriete de c FCI. Droits de reproduction FCI.

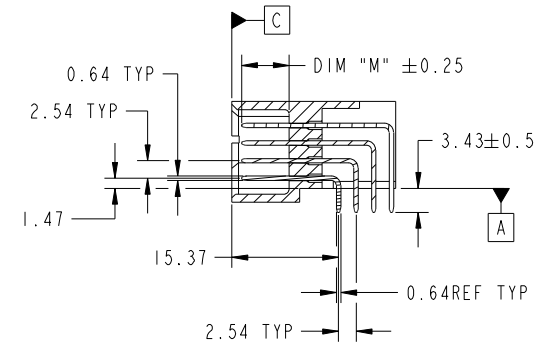


All rights strictly reserved. Reproduction or issue to third parties in any form whatever is not permitted without written authority from the proprietor. Property of FCI. Copyright FCI.

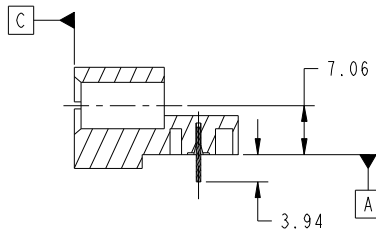
PRODUCT NUMBER  
51730-139\_--  
Notes: ③



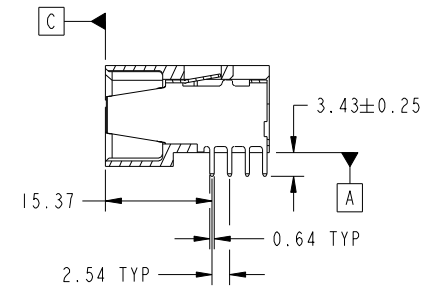
VIEW D-D



SECTION A-A



SECTION C-C



SECTION B-B

mat'l code				0	tolerances unless otherwise specified		CUSTOMER				
ltr	ecn no.	dr	date	linear	0.X ±0.3		COPY		www.fciconnect.com		
A					0.XX ±0.13		projection		title		
					0.XXX ±0.051				7P + 32S + 6P RIGHT ANGLE SOLDER HEADER		
					angles	0° ±2°				product family PwrBlade code	
				dr	Jerome Chen	11/09/07	scale		size		
				enr	Jerome Chen	11/09/07	1:1		dwg no		
				chr	Gary Hsieh	11/09/07			213		
				appd	Joseph Hsia	11/09/07			sheet		
sheet index		revision sheet						A		2 of 4	

cage code 22526

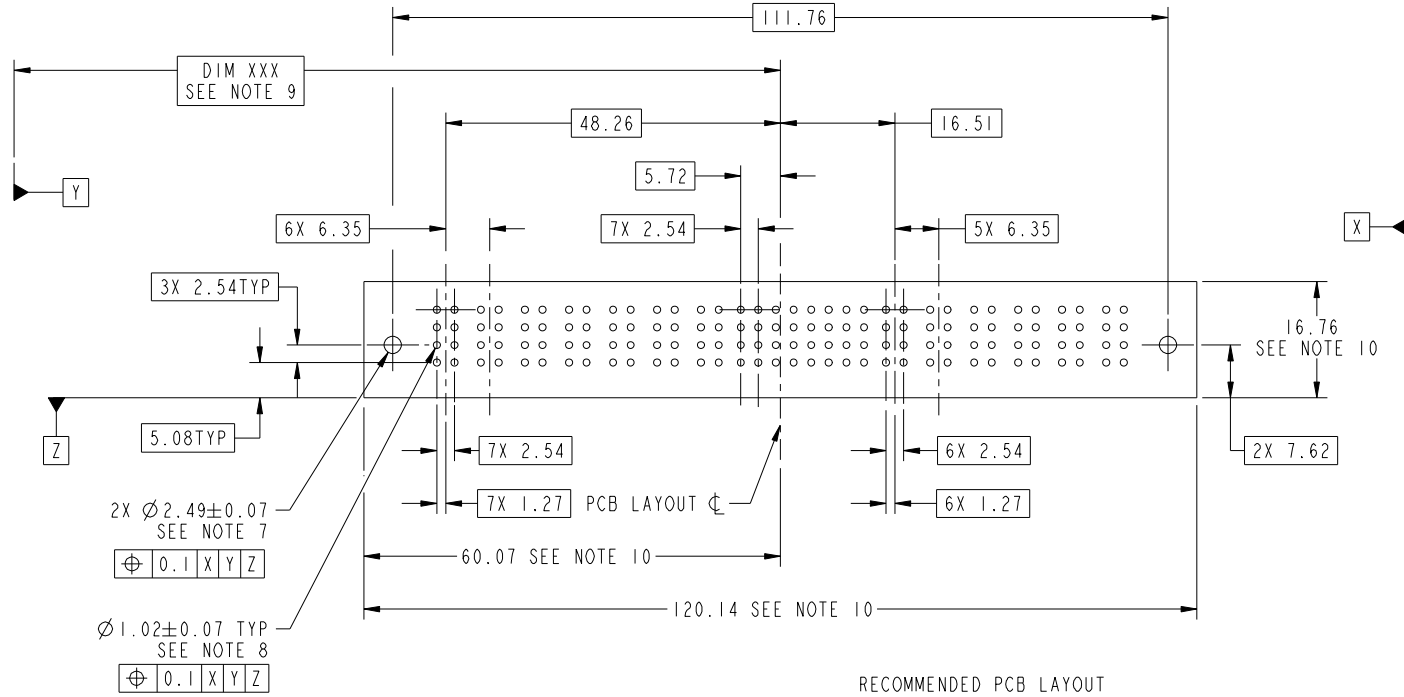
Pro/E

Tous droits strictement reserves. Reproduction ou communication a des tiers interdite sous quelque forme que ce soit sans autorisation écrite du propriétaire. Propriete de c FCI. Droits de reproduction FCI.



All rights strictly reserved. Reproduction or issue to third parties in any form whatever is not permitted without written authority from the proprietor. Property of FCI. Copyright FCI.

PRODUCT NUMBER  
51730-139\_\_  
Note: ③



mat'l code				0		tolerances unless otherwise specified		CUSTOMER		FCI	
ltr	ecn no.	dr	date	linear	0.X ± 0.3	COPY		www.fciconnect.com		title	
A					0.XX ± 0.13	projection		7P + 32S + 6P		RIGHT ANGLE SOLDER HEADER	
				angles	0.XXX ± 0.051	0° ± 2°		product family		PwrBlade code	
				dr	Jerome Chen	11/09/07		size		213	
				enr	Jerome Chen	11/09/07		dwg no		sheet	
				chr	Gary Hsieh	11/09/07		A		3 of 4	
				appd	Joseph Hsia	11/09/07		51730-139			
sheet index	revision sheet							scale	1:1		

cage code 22526

Pro/E

Tous droits strictement reserves. Reproduction ou communication a des tiers interdite sous quelque forme que ce soit sans autorisation écrite du propriétaire. Propriete de c FCI. Droits de reproduction FCI.



All rights strictly reserved. Reproduction or issue to third parties in any form whatever is not permitted without written authority from the proprietor. Property of FCI. Copyright FCI.

PRODUCT NUMBER  
51730-139--  
Note: ③

NOTES:

1. DIMENSIONS AND TOLERANCES ARE IN ACCORDANCE WITH ASME Y14.5M, 1994 UNLESS OTHERWISE SPECIFIED.
- CONNECTORS NOTES:
- ② HOUSING MATERIAL: UL 94 V-0 GLASS FILLED HIGH TEMP THERMO PLASTIC  
POWER CONTACT MATERIAL: COPPER ALLOY  
SIGNAL PIN MATERIAL: COPPER ALLOY
3. PLATING:  
SEE PRINT 10064183 FOR PLATING SPEC OF 51730-139; 51730-139LF
4. "MANUFACTURER" NAME, P/N, AND DATE CODE TO APPEAR ON THIS SURFACE.
5. PRODUCT SPECIFICATION GS-12-149.
- PCB - NOTES:
6. ALL HOLE DIAMETERS ARE FINISHED HOLE SIZE.
7. HOLD DOWN THROUGH HOLES ARE UNPLATED.
8.  $\varnothing 1.151 \pm 0.025$  DRILLED HOLES PLATED WITH 0.008 MIN SnPb OR Sn OVER 0.03 TO 0.08 Cu PLATING TO ACHIEVE  $\varnothing 1.02 \pm .07$  HOLE.
9. "DIM XXX" TO BE DETERMINED BY THE CUSTOMER.
- ⑩ CONNECTOR KEEP-OUT ZONE.

mat'l code		0		tolerances unless otherwise specified		CUSTOMER		FCI		www.fciconnect.com	
ltr	ecr no.	dr	date	linear	0.X ± 0.3	COPY		projection	title		
A					0.XX ± 0.13	MIM			7P + 32S + 6P RIGHT ANGLE SOLDER HEADER		
				angles	0.XXX ± 0.051	← MIM →			product family		code
				dr	Jerome Chen	11/09/07	scale	size	dwg no	sheet	
				enr	Jerome Chen	11/09/07	1:1	A	51730-139	4 of 4	
				chr	Gary Hsieh	11/09/07					
				appd	Joseph Hsia	11/09/07					
sheet index	revision sheet										

cage code 22526

Pro/E