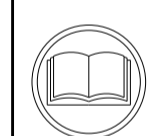


Table with columns: ATLANTIC VERSION TERMINATOR INTERFACE ADAPTER, PART NUMBER, REVISION, DESCRIPTION, FEED TYPE, CONVERT TO, PART NUMBERS REQUIRED.

Table: APPLICATOR DATA. Columns: CRIMP, SIZE, TYPE. Rows: WIRE 1.40 mm [.055], INSUL 1.40 mm [.055].

Table: TERMINAL DATA: TE TERMINAL TE CRIMP SPECIFICATION. Includes terminal name, wire strip length, insulation diameter range, and terminal application specifications.

Table: WIRE SIZE, CRIMP HEIGHT mm [INCH], CRIMP HEIGHT REFERENCE SETTING. Includes crimp height settings for 0.50mm and 0.30mm wire sizes.



- RECOMMENDED SPARE PARTS
- GREASE BEARING SURFACES LIGHTLY
- LUBRICATE DAILY PER THE APPLICATOR INSTRUCTION SHEET SUPPLIED WITH THE APPLICATOR.
- APPLICATOR SPECIFIC DATA TO BE ENTERED INTO BLANK MEMORY CHIP AT ASSEMBLY. SEE BELOW FOR PART NUMBER: MECHANICAL FEED WITH "SMART APPLICATOR" CONVERSION: 8-2151216-4 PNEUMATIC FEED WITH "SMART APPLICATOR" CONVERSION: 8-2151216-4 SERVO FEED WITH "FINE CRIMP HEIGHT ADJUST": 8-2151216-5 SERVO FEED WITH "NON-CRIMP HEIGHT ADJUST": 8-2151216-6
- ADJUSTMENT OF THE STRIPPER MAY BE REQUIRED WHEN MOVING THE APPLICATOR BETWEEN BENCH AND LEADMAKER APPLICATIONS.
- APPLY PART NUMBER 1-23419-5 LOCTITE TO THREADS OF ITEMS 50 & 62. APPLY PART NUMBER 2-23419-6 LOCTITE TO THREADS OF ITEM 242. FOR -6 ONLY APPLY PART NUMBER 1-23419-5 LOCTITE TO THREADS OF ITEMS 37 & 50.
- GREASE THREADS, GROOVE AND O-RING ON ITEMS 35 & 252.
- MAGNET, ITEM 166 MUST BE ORIENTED CORRECTLY IN ORDER TO PROPERLY ACTUATE THE COUNTER.
- CRIMP HEIGHT REFERENCE SETTING WAS THE SETTING USED WHEN THE APPLICATOR WAS QUALIFIED AT THE FACTORY. ADJUSTMENT MAY BE NECESSARY WHEN RUNNING APPLICATOR IN THE FIELD.
- SPARE FEED CAM STORAGE LOCATION REFER TO INSTRUCTION SHEET FOR ADDITIONAL INFORMATION.
- TO CONVERT THE APPLICATOR TO A NON-CARRIER CUTTING STYLE, REMOVE ITEM 13 AND ATTACH TO THE LOCATION ON THE BACK SIDE OF THE HOUSING. REFER TO INSTRUCTION SHEET FOR ADDITIONAL INFORMATION.
- WHEN ASSEMBLING -6 NON-CRIMP HEIGHT ADJUST APPLICATOR USE SHIM PACK 2119957-2 TO ALIGN APPLICATOR'S MAXIMUM WIRE CRIMP HEIGHT AT NORMAL TERMINATOR SHUT HEIGHT

*WARNING
ON INSTALLATION, SET WIRE DISC, ITEM 40 TO LARGEST WIRE SIZE SETTING. USE OF SETTINGS BELOW MINIMUM REQUIRED CRIMP HEIGHT SETTING WILL CAUSE DAMAGE TO CRIMP TOOLING.

Table with columns: PART NO, DESCRIPTION, ITEM NO. Lists spare parts such as APPLICATOR SHIM PACK, O-RING, PUSH ROD, BUSHING, FEED CAM, and DETENT PIN.

ATLANTIC VERSION
Shown on sheets 1 of 4 & 2 of 4
(Pacific version shown on sheets 3 of 4 & 4 of 4)

Table: REVISIONS. Columns: P, LTR, DESCRIPTION, DATE, DWN, APVD. Lists revisions for RELEASE and ECR-16-003919.

Table: PART NUMBERS REQUIRED. Columns: Part No, Description, Item No. Lists various components like SPRING, RAM, CAM, WASHER, RETAINER, SCR, SHCS, MECHANICAL FEED ASSEMBLY, AIR FEED MODULE, TAG, IDENTIFICATION, SPACER, FEEDER, PIN, SLOTTED SPRING, SPRING, COMPRESSION, GUIDE PIN, HOLD-DOWN, RING, RETAIN, EXTERN, MAGNET, COUNTER, SPRING, FEED FINGER, PIN, RETAIN, GRVD, HOLDER, FEED FINGER, MEMORY CHIP, SERVO FEED LATCH ASM, WASHER, FLAT, REG M4, FEED FINGER ASSEMBLY, SPACER, CRIMPER, SPRING, COMPRESSION, HOLDER, INS, DOCUMENTATION PACKAGE, TAG, IDENTIFICATION, SCREW, DRIVE, RH, RoHS, LIMITER, ADJUSTMENT BOLT, SCR, SET, SOC, CONE POINT, SCR, BHSC, RoHS, SCR, HEX HD CAP, PIN, SLOTTED SPRING, PAWL, FEED, SHCS, LOW HEAD, RoHS, NUT, HEX, REG, RoHS, HOLDDOWN, TERMINAL, STANDOFF, HOLD-DOWN, SCR, SKT HD CAP, FEED CAM, POST FEED, APPLICATOR BASIC ASSEMBLY, SF, RAM, AMP STYLE, SIDE FEED, SCR, BHSC, RoHS (M8 X 25), DISC, NUMBERED FA WIRE ADJUSTMENT, APPLICATOR SHIM PACK, RAM WASHER, PRECISION, FA HEAD, ATLANTIC STYLE, BOLT, ADJUSTMENT, SUPPORT, TERMINAL, SCR, BHSC, RoHS (M4 X 20), HEX HEAD, FLANGED, M5 x 8mm LONG, SPACER, STRIP GUIDE, ASSEMBLY, STRIP GUIDE, SPACER, CRIMPER, STRIP GUIDE, SCR, SKT HD CAP, RoHS, M4 X 8.0, WASHER, FLAT, REG M4, STRIPPER, SIDE FEED, INSERT, SHEAR, SPRING, COMPRESSION, STOP, SHEAR, SHEAR HOLDER, FRONT, SHEAR, FLOATING, ANVIL, COMBINATION, DEPRESSOR, SHEAR, BLOCK, CRIMPER SPACER, CRIMPER, INSULATION F PREMIUM, SPACER, CRIMPER, CRIMPER, WIRE PREMIUM.

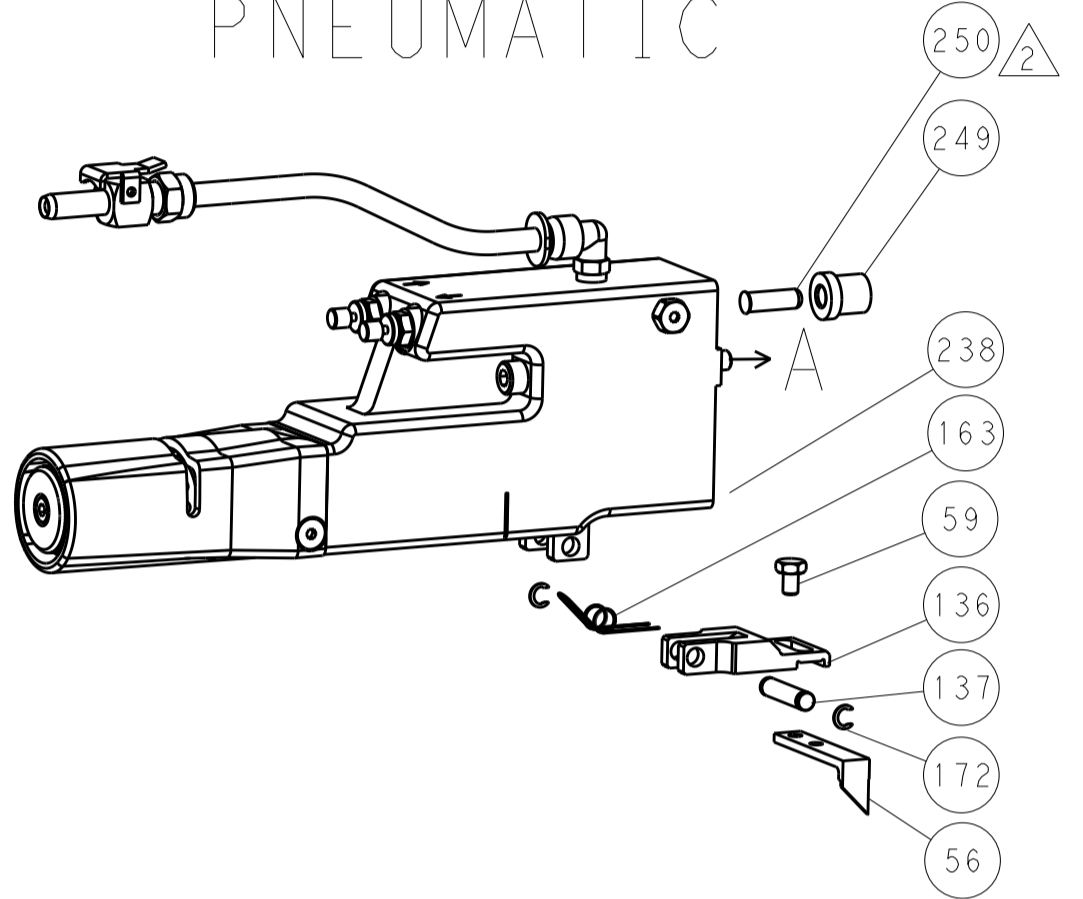
Table: DIMENSIONS, TOLERANCES UNLESS OTHERWISE SPECIFIED. Includes dimensions in mm and material specifications for the applicator.

LOC		DIST		REVISIONS			
A	66	P	LTN	DESCRIPTION	DATE	DMN	APVD
		-		SEE SHEET 1			

FEED TYPE MECHANICAL



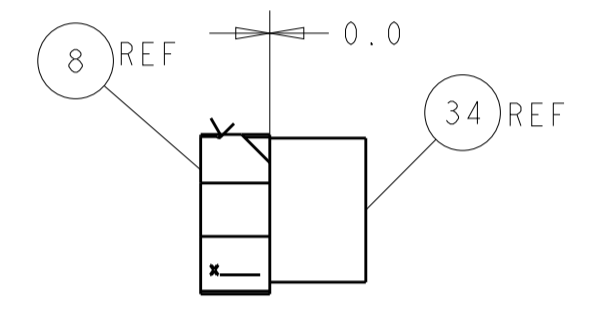
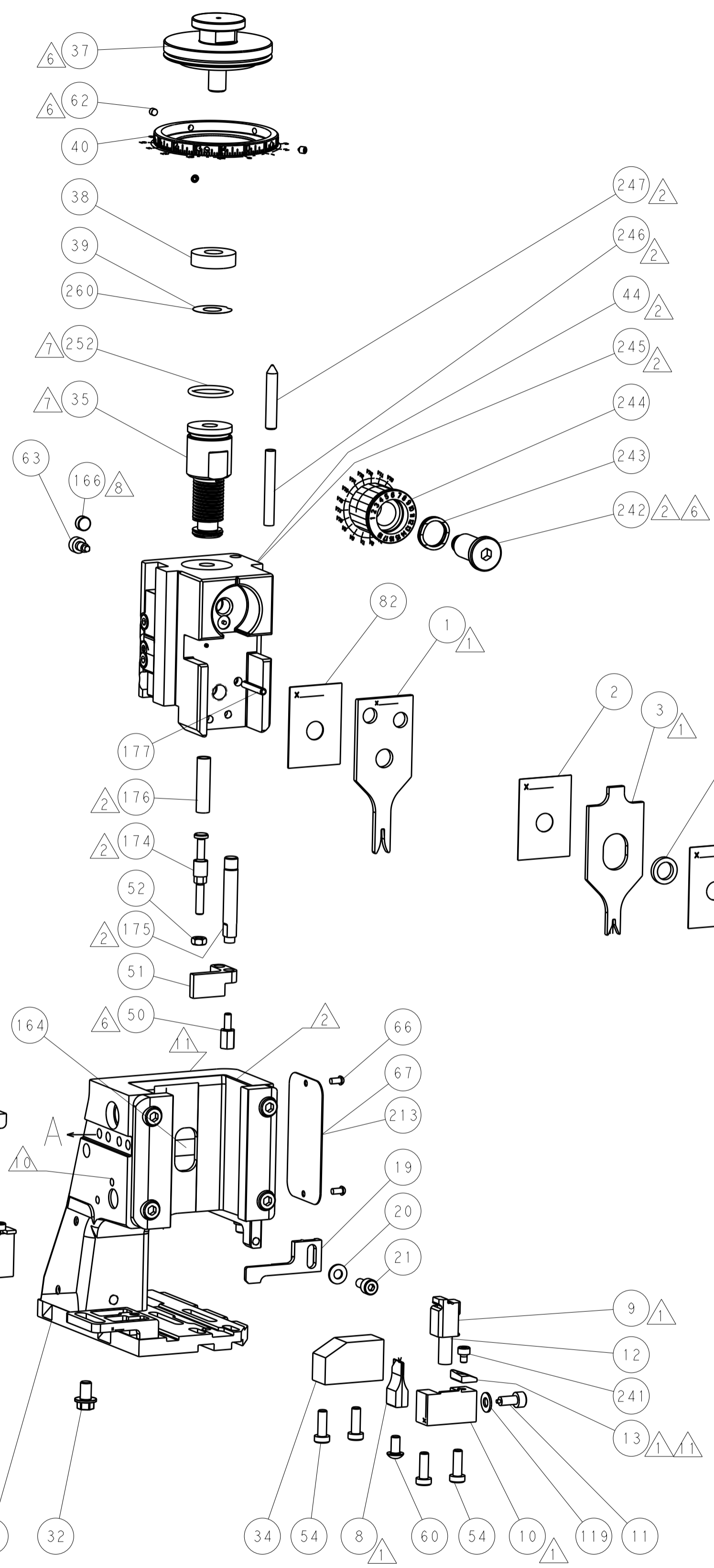
PNEUMATIC



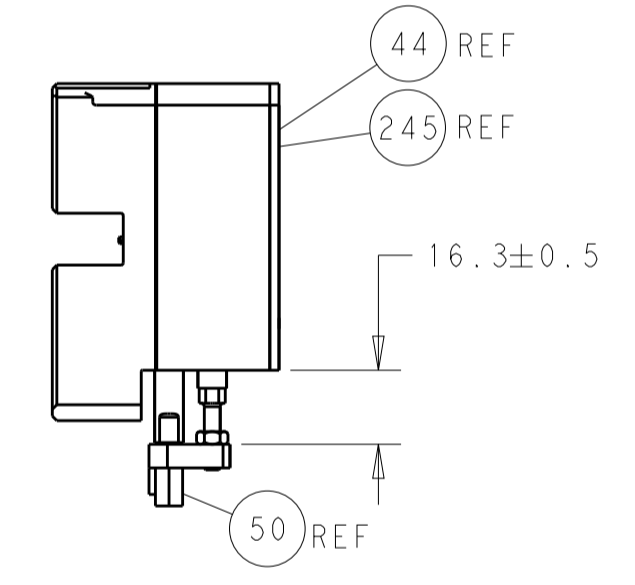
SERVO LATCH PLATE



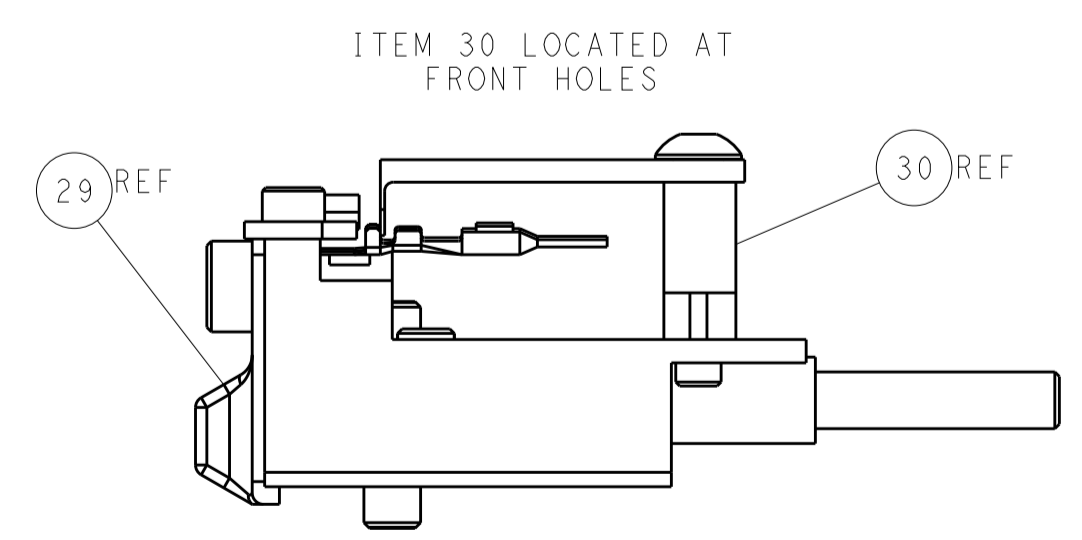
CAM POSITIONS



TERMINAL SUPPORT LOCATION



HOLDDOWN SET-UP



FEED TRACK POSITION GUIDE BY INSULATION BARREL

ATLANTIC VERSION
 Shown on sheets 1 of 4 & 2 of 4
 (Pacific version shown on sheets 3 of 4 & 4 of 4)

DIMENSIONS:		TOLERANCES UNLESS OTHERWISE SPECIFIED:		DWG L. ZHANG 10AUG2011		TE Connectivity	
mm	0 PLC ±	1 PLC ±	2 PLC ±	3 PLC ±	4 PLC ±	5 PLC ±	Harrisburg, PA 17105-3608
MATERIAL:		FINISH:		CHK L. ZHANG 10AUG2011		NAME Ocean Side Feed Applicator	
CUSTOMER ACCESSIBLE PRODUCTION DRAWING		SCALE 1:2		SHEET 2 OF 4		REV B	

LOC		DIST		REVISIONS			
A	66	P	LTM	DESCRIPTION	DATE	OWN	APVD
		-		SEE SHEET 1			

FEED TYPE MECHANICAL



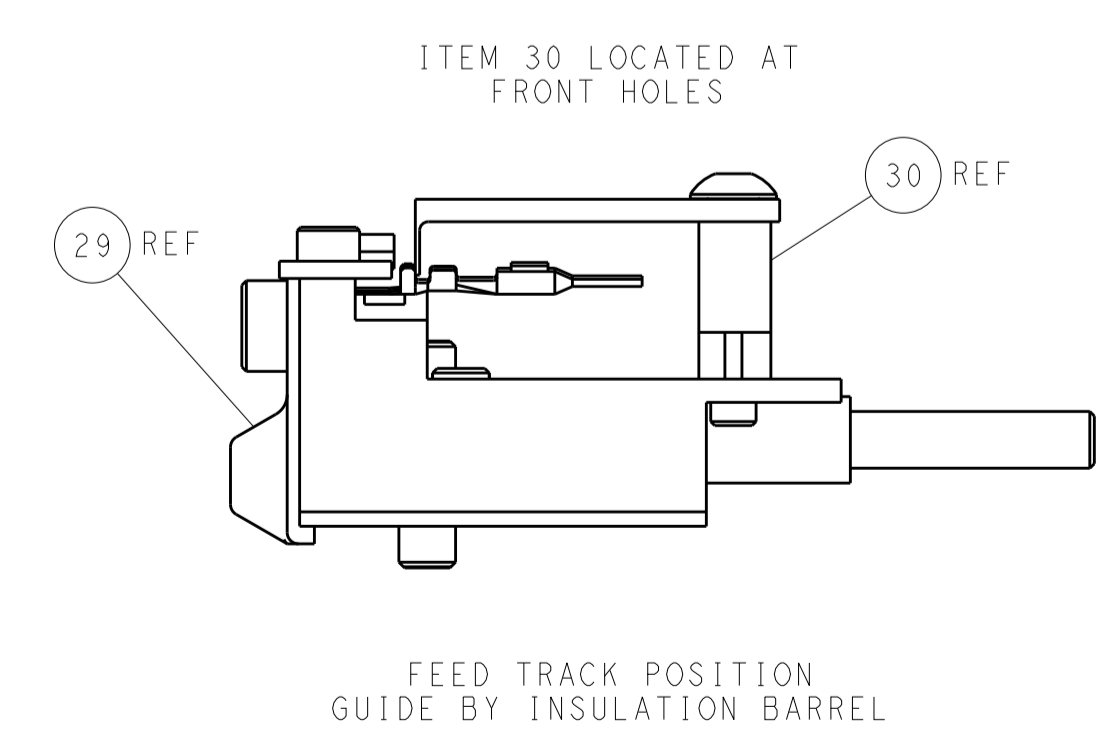
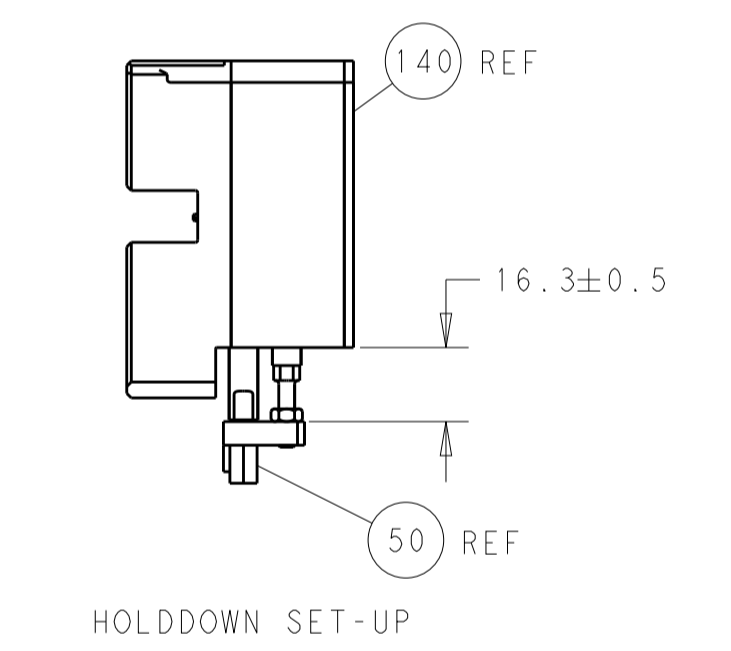
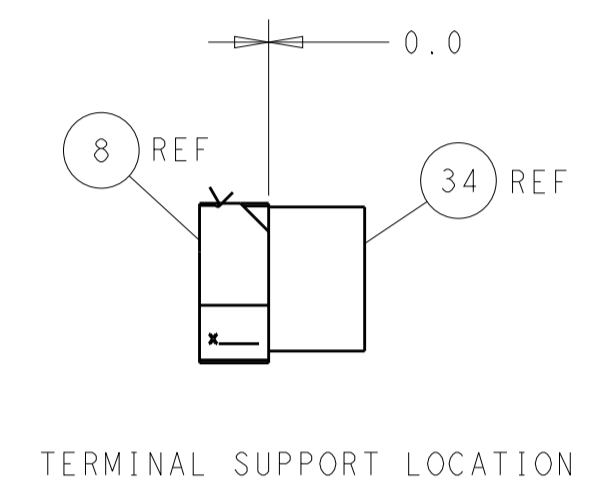
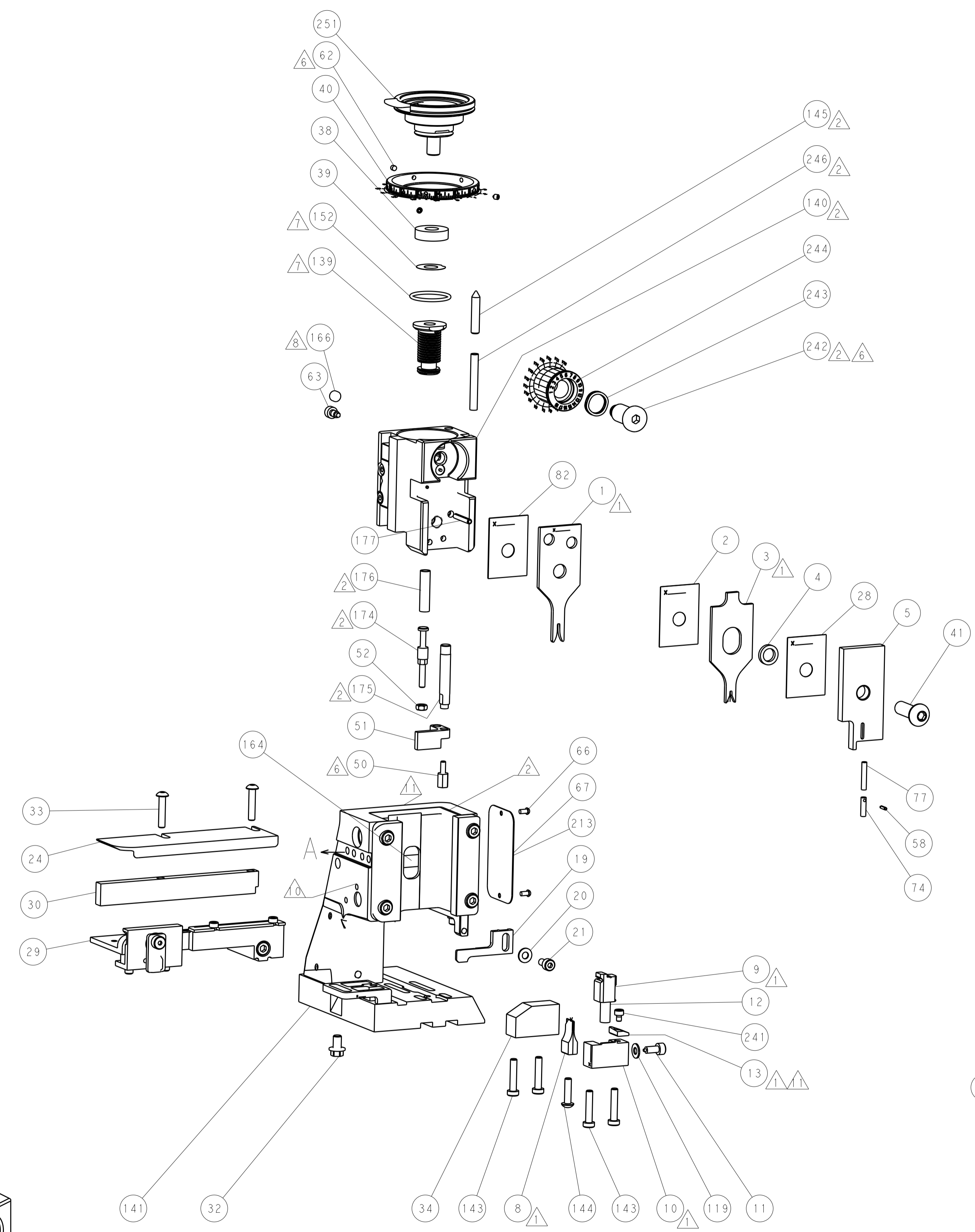
PNEUMATIC



SERVO LATCH PLATE



CAM POSITIONS



PACIFIC VERSION
 Shown on sheets 3 of 4 & 4 of 4
 (Atlantic version shown on sheets 1 of 4 & 2 of 4)

DIMENSIONS:		TOLERANCES UNLESS OTHERWISE SPECIFIED:		DWN L. ZHANG 10AUG2011		STE TE Connectivity Harrisburg, PA 17105-3608	
mm	0 PLC	±		CHK L. ZHANG 10AUG2011	NAME	Ocean Side Feed Applicator	
	1 PLC	±		APPV S. XI 10AUG2011	PRODUCT SPEC	RESTRICTED TO	
	2 PLC	±			APPLICATION SPEC	SIZE CAGE CODE DRAWING NO	
	3 PLC	±				A 00779 C=2151216	
	4 PLC	±			WEIGHT	SCALE 1:2 SHEET 4 OF 4 REV B	
	ANGLES	±			CUSTOMER ACCESSIBLE PRODUCTION DRAWING		