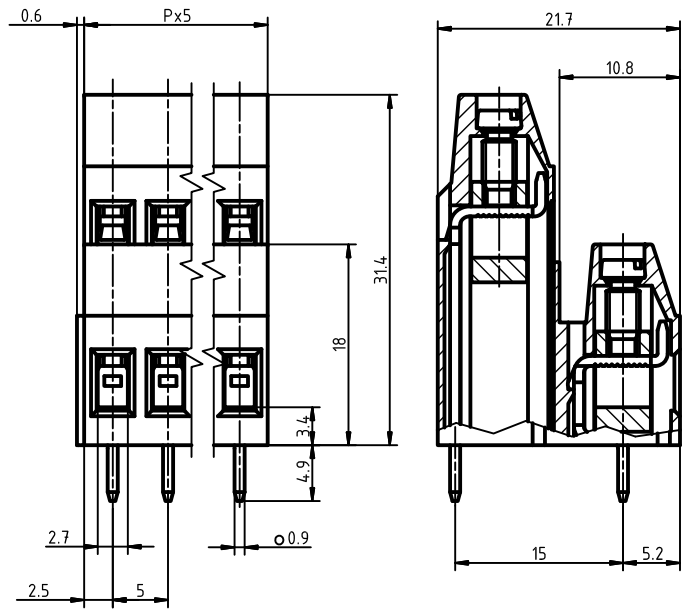


SIGN	DATE	DESCRIPTION	APPROVER



**Ratings**

Use Group	B	C	D	250 V
Rated Voltage	300 V	150 V	300 V	24 A
Rated Current	20 A	20 A	10 A	
Rated Wire Size				
solid	AWG 30-12	AWG 30-12	AWG 30-12	min 0,5 mm <sup>2</sup> max 2,5 mm <sup>2</sup>
flexible	AWG 30-12	AWG 30-12	AWG 30-12	0,5 mm <sup>2</sup> 2,5 mm <sup>2</sup>

Screw Size	M3	M3	M3	M3
------------	----	----	----	----

**Insulating Material**

Material	PA 6.6
Flammability Class	UL 94 V-0

**Materials**

Clamp	Brass
Screw	Steel
Solder Tag	Copper Alloy
Temperature Range	-30 °C - 105 °C

RoHS Compliant

PART NUMBER:

**ED790/X**

No. of Poles ←

2: 2 Poles

3: 3 Poles

: :

16 16 Poles

THESE DRAWINGS AND SPECIFICATIONS ARE THE PROPERTY OF ON-SHORE TECHNOLOGY, INC. AND SHALL NOT BE REPRODUCED, COPIED OR USED IN ANY MANNER WITHOUT THE PRIOR WRITTEN CONSENT OF ON-SHORE TECHNOLOGY, INC.



TITLE: ED790 5mm series, one piece, Double level

PART. NO.: ED790/X				DWG NAME: ED790.DWG	
APPROVED BY	CHECKED BY	DESIGNED BY	DRAWN BY	CUSTOM NO.:	
	H.Walters		S.Vogel		
				UNITS: mm	
				SCALE: none	
				REVISION: A	