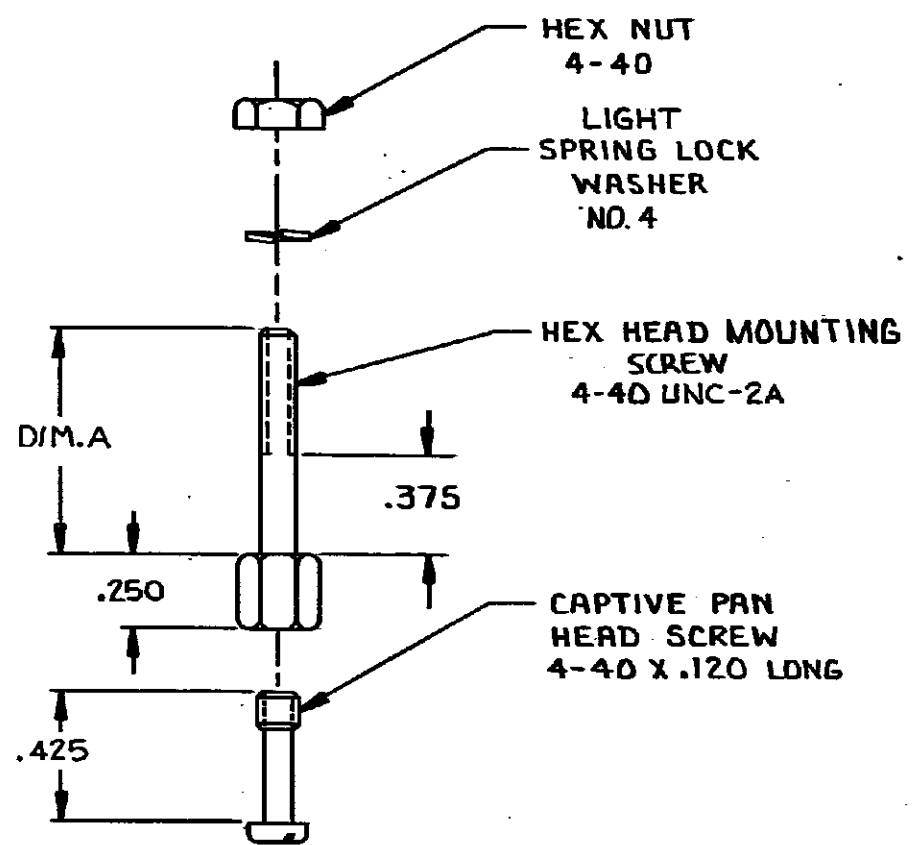


THIS DRAWING IS UNPUBLISHED, RELEASED FOR PUBLICATION, 19
 © COPYRIGHT 1975 BY AMP INCORPORATED, HARRISBURG, PA. ALL INTERNATIONAL RIGHTS RESERVED. AMP PRODUCTS MAY BE COVERED BY U.S. AND FOREIGN PATENTS AND/OR PATENTS PENDING.

REVISIONS						
P	F	ZONE	LTR	DESCRIPTION	DATE	APPROVED
K			K	REV PER ECN. AA-4246	10-20-81	<i>[Signature]</i> TC



1. ALL DIMENSIONS SHOWN ARE FOR REFERENCE ONLY UNLESS OTHERWISE SPECIFIED.
2. TWD (2) REQUIRED OF EACH COMPONENT PER KIT.
3. MATERIAL: PAN HEAD SCREW-ZINC PLATED STEEL. LOCK WASHERS-PASSIVATED STAINLESS STEEL. HEX HEAD SCREW - BRASS WITH CHROME PLATE. HEX NUT - PASSIVATED STAINLESS STEEL.

OBSOLETE	DIM. A	WASHER DESCRIPTION	PART NO
	.625	SPRING LOCK WASHER	552563-2
	.750		552563-1

UNLESS OTHERWISE SPECIFIED DIMENSIONS ARE IN INCHES. TOLERANCES ON: DECIMALS ± ANGLES ±	CONTRACT NO		AMP AMP INCORPORATED Harrisburg, Pa.	
	DR. <i>A. Holt</i> 9-4-81			
	CHK. <i>Minick</i> 9-9-81		NAME	
	MATERIAL $\triangle 3$		HARDWARE KIT, SCREW LOCK, VERTICAL MOUNTING, CHAMP	
FINISH $\triangle 3$	APPRO. <i>[Signature]</i> 9/12/81	SIZE	FSCM NO	DRAWING NO
	APPRO. <i>[Signature]</i> 9/13/81	B	00779	552563
	DSGN APPD. <i>[Signature]</i>	SCALE 2:1	SHEET 1 OF 1	
	OTHER APPD.			

CUSTOMER DRAWING