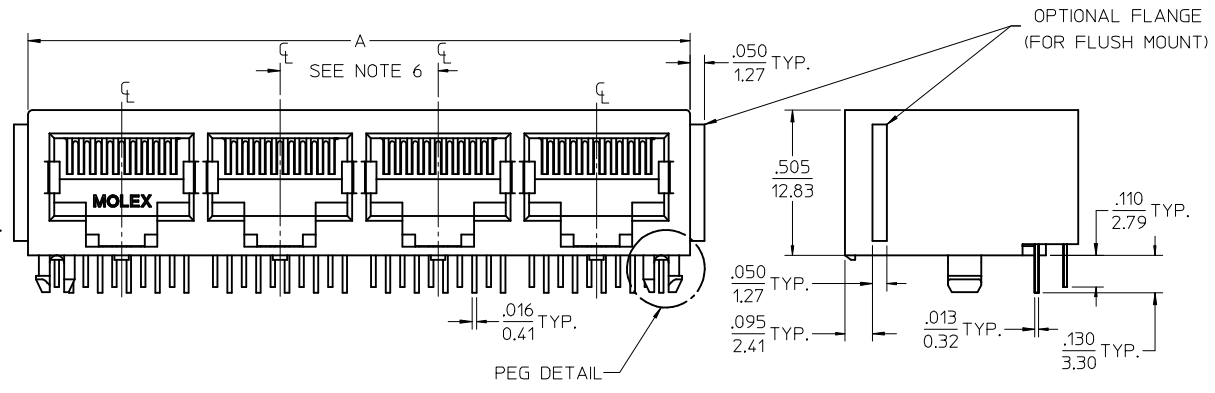
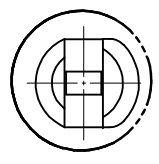
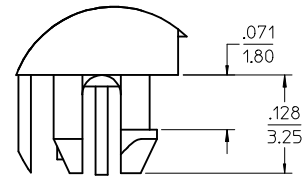
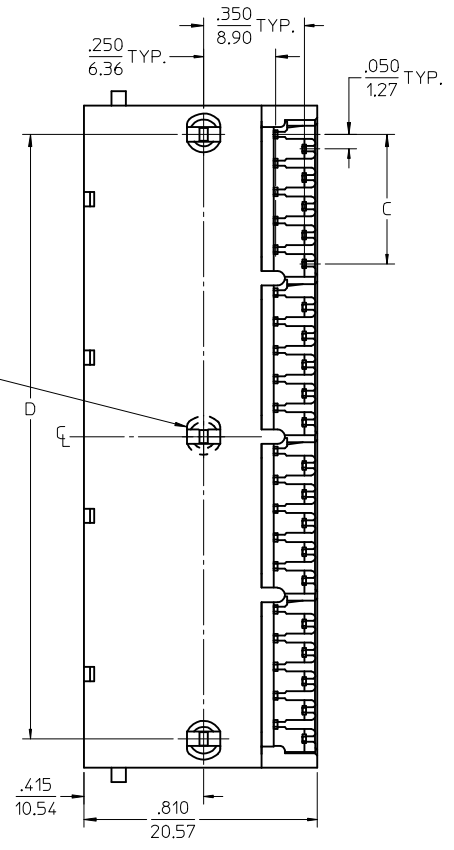


- NOTES:
- 1) MATERIAL:  
HOUSING: GLASS FILLED NYLON, UL94V-0, COLOR: BLACK  
INSULATOR: GLASS FILLED NYLON, UL94V-0, COLOR: BLACK  
TERMINALS: PHOSPHOR BRONZE: .012/(0.30) THICK
  - 2) FINISH:  
TERMINALS:  
SELECT GOLD IN CONTACT AREA: 50 MICROINCHES (1.27 MICROMETERS) MIN.,  
SELECT TIN IN PC TAIL AREA: 100 MICROINCHES (2.54 MICROMETERS) MIN.,  
WITH OVERALL NICKEL UNDERPLATE: 50 MICROINCHES (1.27 MICROMETERS) MIN.
  - 3) PRODUCT SPECIFICATION AND PROCESSING PARAMETERS: PS-43223-001.
  - 4) PACKAGING SPECIFICATION:  
UNSHIELDED CONNECTOR ASSEMBLIES PACKAGED IN TRAYS PER MOLEX  
PACKAGING SPECIFICATION PK-43249-004.
  - 5) SEE SHEETS 3-4 FOR P.C. BOARD LAYOUTS.
  - 6) FOR 6 CIRCUIT JACKS CENTERLINE TO CENTERLINE SPACING IS .448/(11.38),  
FOR 8 CIRCUIT JACKS CENTERLINE TO CENTERLINE SPACING IS .550/(13.97).
  - 7) ALL UNTOLERANCED DIMENSIONS ARE SHOWN FOR REFERENCE ONLY.
  - 8) THE PRIMARY SHIPPING CARTON WILL BE LABELED, "COMPLIANT TO  
RoHS DIRECTIVE 2002/95/EC AND ELV ANNEX II OF DIRECTIVE 2000/53/EC."  
ASSEMBLIES WILL BE COMPLIANT TO THE RoHS AND ELV (LEAD-FREE) DIRECTIVES.
  - 9) THIS PART CONFORMS TO CLASS B REQUIREMENTS OF COSMETIC SPECIFICATION  
PS-45499-002.



4 PORT 8 LOADED 10 JACK  
W/ SNAP-FIT PEGS SHOWN

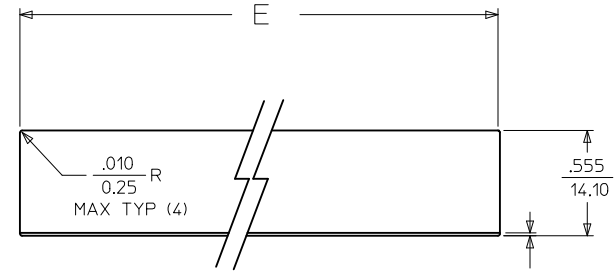
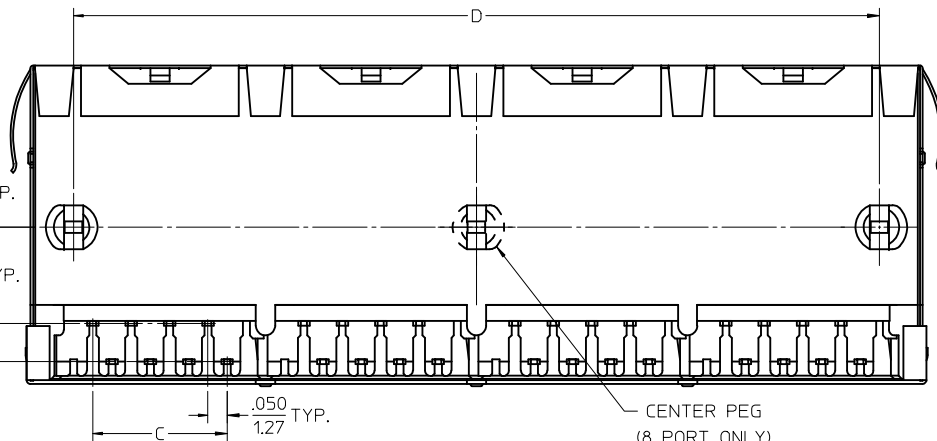
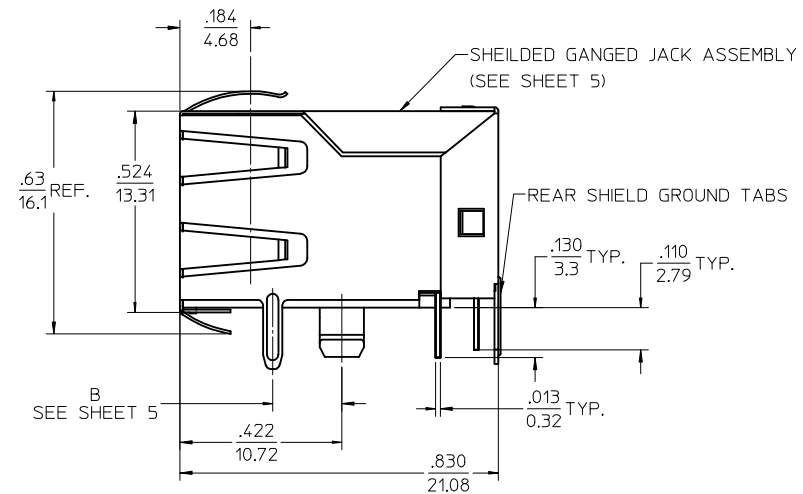
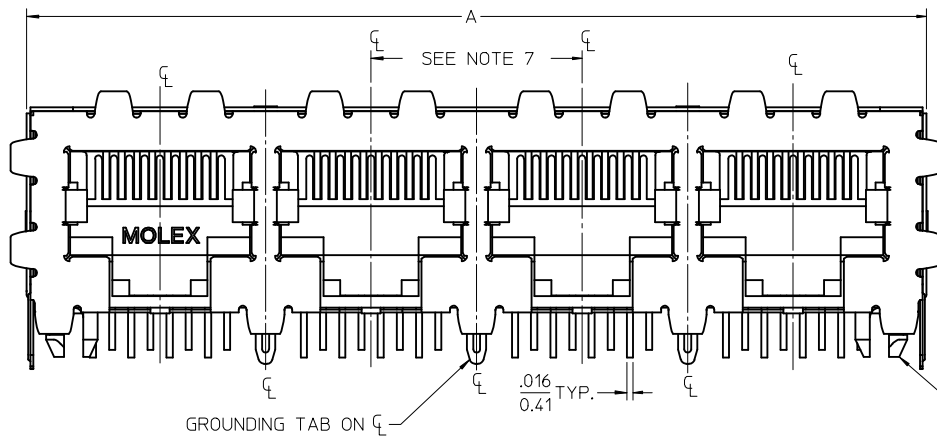


PEG DETAIL  
SCALE 8:1

6 CIRCUIT HOUSING					
CIRCUIT SIZE	NO. OF PORTS	DIM. A	DIM. C	DIM. D	
6	2	.985 (25.02)	.250 (6.35)	.848 (21.54)	
4	2	.985 (25.02)	.150 (3.81)	.848 (21.54)	
2	2	.985 (25.02)	.050 (1.27)	.848 (21.54)	
6	3	1.433 (36.40)	.250 (6.35)	1.296 (32.92)	
4	3	1.433 (36.40)	.150 (3.81)	1.296 (32.92)	
2	3	1.433 (36.40)	.050 (1.27)	1.296 (32.92)	
6	4	1.881 (47.78)	.250 (6.35)	1.744 (44.30)	
4	4	1.881 (47.78)	.150 (3.81)	1.744 (44.30)	
2	4	1.881 (47.78)	.050 (1.27)	1.744 (44.30)	
6	5	2.329 (59.16)	.250 (6.35)	2.192 (55.68)	
4	5	2.329 (59.16)	.150 (3.81)	2.192 (55.68)	
2	5	2.329 (59.16)	.050 (1.27)	2.192 (55.68)	
6	6	2.777 (70.54)	.250 (6.35)	2.640 (67.06)	
4	6	2.777 (70.54)	.150 (3.81)	2.640 (67.06)	
2	6	2.777 (70.54)	.050 (1.27)	2.640 (67.06)	
6	8	3.673 (93.29)	.250 (6.35)	3.536 (89.81)	
4	8	3.673 (93.29)	.150 (3.81)	3.536 (89.81)	
2	8	3.673 (93.29)	.050 (1.27)	3.536 (89.81)	

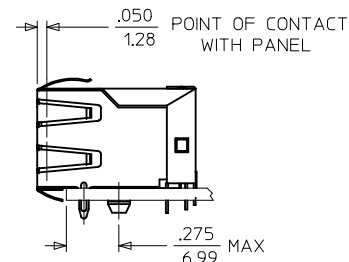
8 CIRCUIT HOUSING					
CIRCUIT SIZE	NO. OF PORTS	DIM. A	DIM. C	DIM. D	
10	2	1.200 (30.48)	.450 (11.43)	1.000 (25.40)	
8	2	1.200 (30.48)	.350 (8.89)	1.000 (25.40)	
6	2	1.200 (30.48)	.250 (6.35)	1.000 (25.40)	
10	3	1.750 (44.45)	.450 (11.43)	1.550 (39.37)	
8	3	1.750 (44.45)	.350 (8.89)	1.550 (39.37)	
6	3	1.750 (44.45)	.250 (6.35)	1.550 (39.37)	
4	3	1.750 (44.45)	.150 (3.81)	1.550 (39.37)	
10	4	2.300 (58.42)	.450 (11.43)	2.100 (53.34)	
8	4	2.300 (58.42)	.350 (8.89)	2.100 (53.34)	
4	4	2.300 (58.42)	.150 (3.81)	2.100 (53.34)	
4	5	2.850 (72.39)	.450 (11.43)	2.650 (67.31)	
10	5	2.850 (72.39)	.350 (8.89)	2.650 (67.31)	
8	5	2.850 (72.39)	.250 (6.35)	2.650 (67.31)	
10	6	3.400 (86.36)	.450 (11.43)	3.200 (81.28)	
8	6	3.400 (86.36)	.350 (8.89)	3.200 (81.28)	
10	8	4.500 (114.30)	.450 (11.43)	4.300 (109.22)	
8	8	4.500 (114.30)	.350 (8.89)	4.300 (109.22)	

<b>OBsolete PN</b> IEC NO: UCP2017-06/15 DRW:WAFENG02 2016/09/19 CHKD: APPR:KLANG 2016/09/28 REV: A10	QUALITY SYMBOLS 	GENERAL TOLERANCES (UNLESS SPECIFIED) mm INCH		DIMENSION STYLE IN/MM		SCALE 3:1	DESIGN UNITS INCH	THIRD ANGLE PROJECTION	
		4 PLACES ± --- ± --- 3 PLACES ± --- ± .015 2 PLACES ± 0.38 ± --- 1 PLACE ± --- ± ---	DRAWN BY RHOLTS	DATE 2004/06/04	TITLE <b>LOW PROFILE GANGED, RIGHT ANGLE MODULAR JACK ASSEMBLY, LEAD-FREE</b>		<b>MOLEX INCORPORATED</b>	SHEET NO. 1 OF 5	
		ANGULAR ±1/2°	CHECKED BY LSCHMIDT	DATE 2004/06/04	<b>MOLEX INCORPORATED</b>				
		DRAFT WHERE APPLICABLE MUST REMAIN WITHIN DIMENSIONS	APPROVED BY FSMITH	DATE 2004/06/04	DOCUMENT NO. <b>SD-43223-001</b>				
THIS DRAWING CONTAINS INFORMATION THAT IS PROPRIETARY TO MOLEX INCORPORATED AND SHOULD NOT BE USED WITHOUT WRITTEN PERMISSION									



SUGGESTED PANEL OPENING

SCALE : 2/1

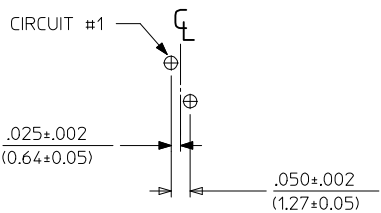


4 PORT 8 LOADED 8 JACK  
(W/ SNAP-FIT PEGS SHOWN)

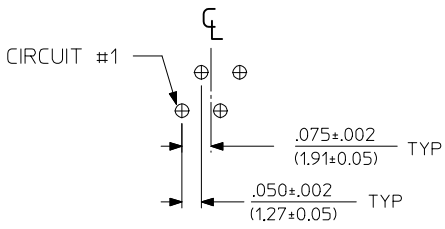
- NOTES:
- MATERIAL:  
HOUSING: GLASS FILLED NYLON, UL94V-0, COLOR: BLACK  
INSULATOR: GLASS FILLED NYLON, UL94V-0, COLOR: BLACK  
TERMINALS: PHOSPHOR BRONZE: .012/(0.30) THICK  
SHIELD: BRASS, FRONT .007/(0.18) THICK, REAR .010/(0.25) THICK
  - FINISH:  
TERMINALS:  
SELECT GOLD IN CONTACT AREA: 50 MICROINCHES (1.27 MICROMETERS) MIN.,  
SELECT TIN IN PC TAIL AREA: 100 MICROINCHES (2.54 MICROMETERS) MIN.,  
WITH OVERALL NICKEL UNDERPLATE: 50 MICROINCHES (1.27 MICROMETERS) MIN.  
SHIELD:  
100 MICROINCHES (2.54 MICROMETERS) NICKEL OVER 50 MICROINCHES  
(1.27 MICROMETERS) COPPER UNDERPLATE; PCB GROUND TABS DIPPED IN TIN
  - PRODUCT SPECIFICATION AND PROCESSING PARAMETERS: PS-43223-001.
  - PACKAGING SPECIFICATION:  
SHIELDED CONNECTOR ASSEMBLIES PACKAGED IN TRAYS PER MOLEX  
PACKAGING SPECIFICATION PK-44150-004.
  - SEE SHEETS 3-5 FOR P.C. BOARD LAYOUTS.
  - REAR SHIELD IS AVAILABLE WITH (1) CENTERED GROUND TAB ON 4 & 8 PORT VERSIONS.
  - 8 CIRCUIT JACKS CENTERLINE TO CENTERLINE SPACING IS .550/(13.97).
  - ALL UNTOLERANCED DIMENSIONS ARE SHOWN FOR REFERENCE ONLY.
  - THE PRIMARY SHIPPING CARTON WILL BE LABELED "COMPLIANT TO RoHS  
DIRECTIVE 2002/95/EC AND ELV ANNEX II OF DIRECTIVE 2000/53/EC".  
ASSEMBLIES WILL BE COMPLIANT TO THE RoHS AND ELV (LEAD-FREE) DIRECTIVES.
  - THIS PART CONFORMS TO CLASS B REQUIREMENTS OF COSMETIC SPECIFICATION  
PS-45499-002.

HOUSING SIZE	CIRCUIT SIZE	NO. OF PORTS	DIM. A	DIM. C	DIM. D	DIM. E
8	8	2	1.224 (31.09)	.350 (8.89)	1.000 (25.40)	1.255 (31.88)
8	8	4	2.324 (59.03)	.350 (8.89)	2.100 (53.34)	2.355 (59.82)
8	8	6	3.424 (86.97)	.350 (8.89)	3.200 (81.28)	3.455 (87.76)
8	8	8	4.524 (114.91)	.350 (8.89)	4.300 (109.22)	4.555 (115.97)
8	2	8	4.524 (114.91)	.050 (1.27)	4.300 (109.22)	4.555 (115.97)

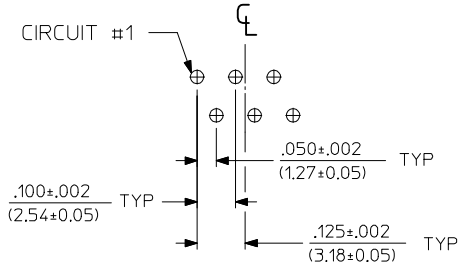
SEE SHEET 1 EC NO: UCP2017-0615 DRW:WAFENG02 2016/09/19 CHKD: CHPR:KLANG 2016/09/28 APPR:KLANG	QUALITY SYMBOLS ▽=0 ▽=0	GENERAL TOLERANCES (UNLESS SPECIFIED) mm INCH 4 PLACES ± --- ± --- 3 PLACES ± --- ± .015 2 PLACES ± 0.38 ± --- 1 PLACE ± --- ± --- ANGULAR ±1/2°	DIMENSION STYLE IN/MM DRAWN BY DATE RHOLTS 2004/06/04 CHECKED BY DATE LSCHMIDT 2004/06/04 APPROVED BY DATE FSMITH 2004/06/04	SCALE 4:1 DESIGN UNITS INCH THIRD ANGLE PROJECTION	TITLE LOW PROFILE GANGED, RIGHT ANGLE MODULAR JACK ASSEMBLY, LEAD-FREE MOLEX INCORPORATED	MATERIAL NO. SEE SHEET 5 DOCUMENT NO. SD-43223-001	SHEET NO. 2 OF 5
	DRAFT WHERE APPLICABLE MUST REMAIN WITHIN DIMENSIONS						
	THIS DRAWING CONTAINS INFORMATION THAT IS PROPRIETARY TO MOLEX INCORPORATED AND SHOULD NOT BE USED WITHOUT WRITTEN PERMISSION						
	A10						



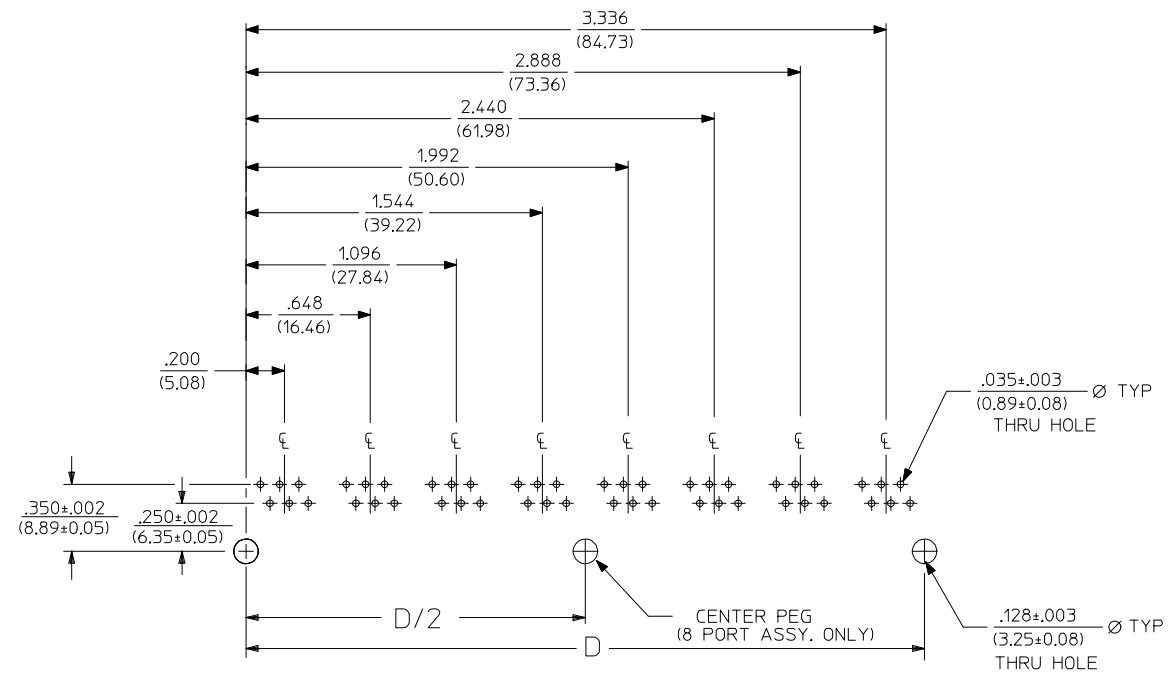
6 LOADED 2 DETAIL  
SCALE: 4/1



6 LOADED 4 DETAIL  
SCALE: 4/1



6 LOADED 6 DETAIL  
SCALE: 4/1



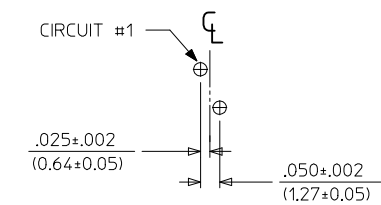
SUGGESTED P.C. BOARD LAYOUT  
COMPONENT SIDE OF BOARD  
8 PORT, 6 LOADED 6, LAYOUT SHOWN  
(SNAP-FIT VERSIONS)

FLANGELESS SNAP-FIT PEGS (UNSHIELDED)

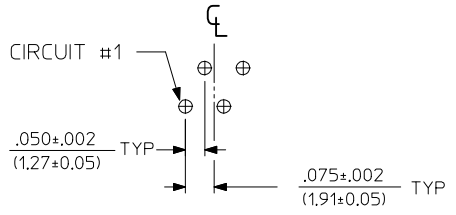
TX=NOT TOOLED	ASSEMBLY NUMBER	CONNECTOR SIZE	NUMBER OF CIRCUITS	NUMBER OF PORTS	DIMENSION "D"	PACKAGING STYLE	PACKAGING SPECIFICATION
X	43223-6613	6	6	6	2.640/(67.06)	TRAY	PK-43249-004
X	43223-6619	6	6	8	3.536/(89.81)	TRAY	PK-43249-004
X	43223-6655	6	2	6	2.640/(67.06)	TRAY	PK-43249-004

NOTES:  
1. RECOMMENDED PCB THICKNESS: .062±.005/(1.57±0.13)

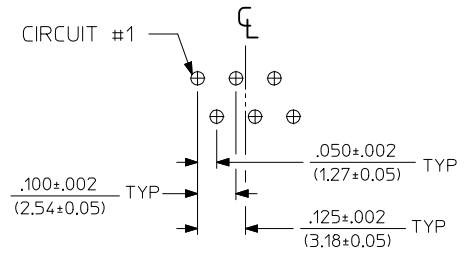
SEE SHEET 1 EC NO: UCP2017-0615 DRWNAFENG02 2016/09/19 CHKD: APPR:KLANG 2016/09/28 REV: A10	QUALITY SYMBOLS ▽=0 ▽=0	GENERAL TOLERANCES (UNLESS SPECIFIED) <table border="1"> <tr> <th></th> <th>mm</th> <th>INCH</th> </tr> <tr> <td>4 PLACES</td> <td>± .05</td> <td>± .002</td> </tr> <tr> <td>3 PLACES</td> <td>± .03</td> <td>± .0015</td> </tr> <tr> <td>2 PLACES</td> <td>± 0.38</td> <td>± .015</td> </tr> <tr> <td>1 PLACE</td> <td>± .001</td> <td>± .0005</td> </tr> </table>		mm	INCH	4 PLACES	± .05	± .002	3 PLACES	± .03	± .0015	2 PLACES	± 0.38	± .015	1 PLACE	± .001	± .0005	DIMENSION STYLE IN/MM	SCALE 2:1	DESIGN UNITS INCH	THIRD ANGLE PROJECTION
		mm	INCH																		
	4 PLACES	± .05	± .002																		
	3 PLACES	± .03	± .0015																		
2 PLACES	± 0.38	± .015																			
1 PLACE	± .001	± .0005																			
DRAFT WHERE APPLICABLE MUST REMAIN WITHIN DIMENSIONS		SEE CHART		MOLEX INCORPORATED		SHEET NO. 3 OF 5															
THIS DRAWING CONTAINS INFORMATION THAT IS PROPRIETARY TO MOLEX INCORPORATED AND SHOULD NOT BE USED WITHOUT WRITTEN PERMISSION		MATERIAL NO.		DOCUMENT NO.		TITLE LOW PROFILE GANGED, RIGHT ANGLE MODULAR JACK ASSEMBLY, LEAD-FREE															



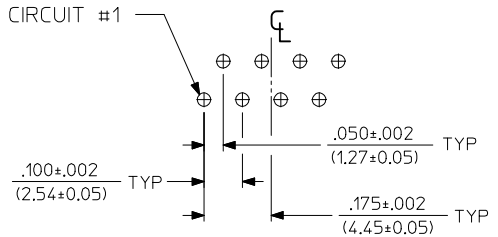
8 LOADED 2 DETAIL  
SCALE: 4/1



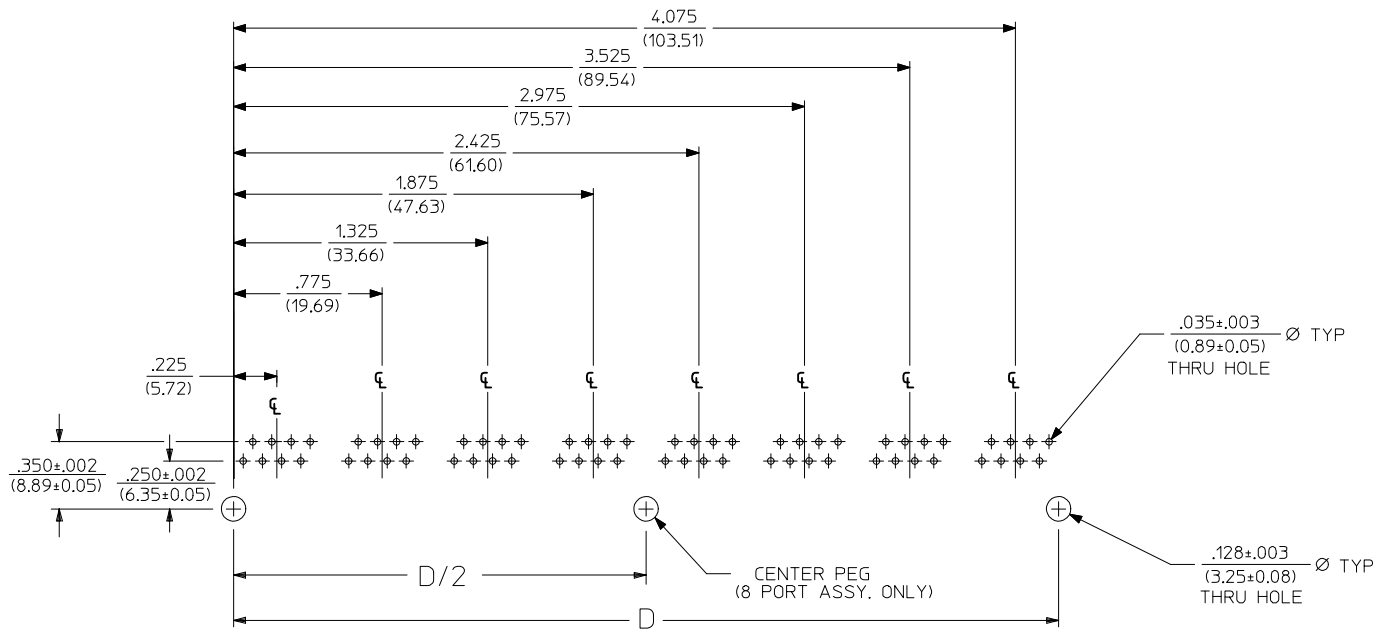
8 LOADED 4 DETAIL  
SCALE: 4/1



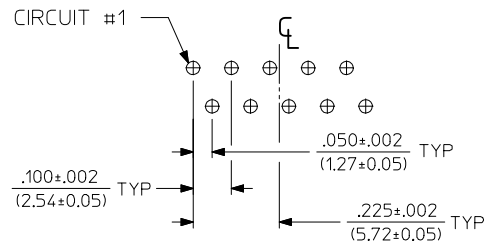
8 LOADED 6 DETAIL  
SCALE: 4/1



8 LOADED 8 DETAIL  
SCALE: 4/1



SUGGESTED P.C. BOARD LAYOUT  
COMPONENT SIDE OF BOARD  
8 PORT, 8 LOADED 8  
(UNSHIELDED) LAYOUT SHOWN  
(SNAP-FIT VERSIONS)



8 LOADED 10 DETAIL  
SCALE: 4/1

FLANGELESS SNAP-FIT PEGS (UNSHIELDED)

X# NOT TOOLED	ASSEMBLY NUMBER	CONNECTOR SIZE	NUMBER OF CIRCUITS	NUMBER OF PORTS	DIMENSION "D"	PACKAGING STYLE	PACKAGING SPECIFICATION
X	43223-8576	8	8	8	4.300/(109.32)	TRAY	PK-43249-004

NOTES:  
1. RECOMMENDED PCB THICKNESS: .062±.005/(1.57±0.13)

SEE SHEET 1	QUALITY SYMBOLS
EC NO: UCP2017-0615	▽=0
DRWNAFENG02 2016/09/19	▽=0
CHKD:	
APPR:KLANG 2016/09/28	
REV	
A10	

GENERAL TOLERANCES (UNLESS SPECIFIED)

	mm	INCH
4 PLACES ±	---	±---
3 PLACES ±	---	±.015
2 PLACES ±	0.38	±---
1 PLACE ±	---	±---

ANGULAR ±1/2°

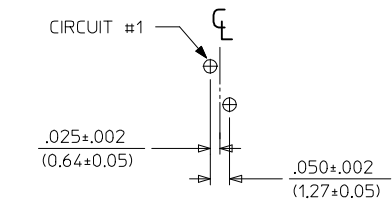
DRAFT WHERE APPLICABLE MUST REMAIN WITHIN DIMENSIONS

DIMENSION STYLE		SCALE	DESIGN UNITS	THIRD ANGLE PROJECTION
IN/MM		2:1	INCH	☉
DRAWN BY	DATE	TITLE		
RHOLTS	2004/06/04	LOW PROFILE GANGED, RIGHT ANGLE MODULAR JACK ASSEMBLY, LEAD-FREE		
CHECKED BY	DATE	MATERIAL NO.		
LSCHMIDT	2004/06/04	DOCUMENT NO.		
APPROVED BY	DATE	MATERIAL NO.		
FSMITH	2004/06/04	DOCUMENT NO.		
SEE CHART		SD-43223-001		

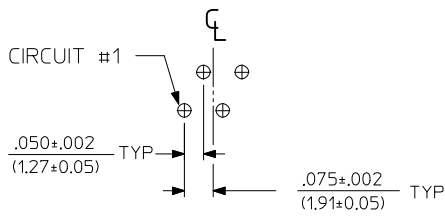
MOLEX INCORPORATED

THIS DRAWING CONTAINS INFORMATION THAT IS PROPRIETARY TO MOLEX INCORPORATED AND SHOULD NOT BE USED WITHOUT WRITTEN PERMISSION

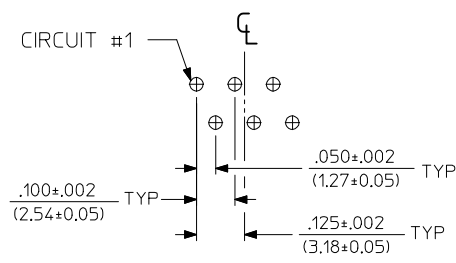
SHEET NO. 4 OF 5



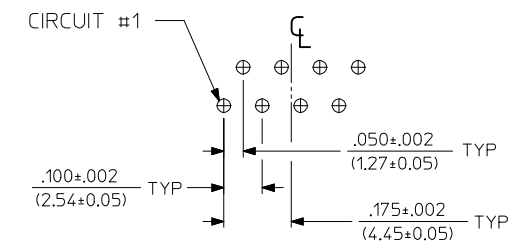
8 LOADED 2 DETAIL  
SCALE: 4/1



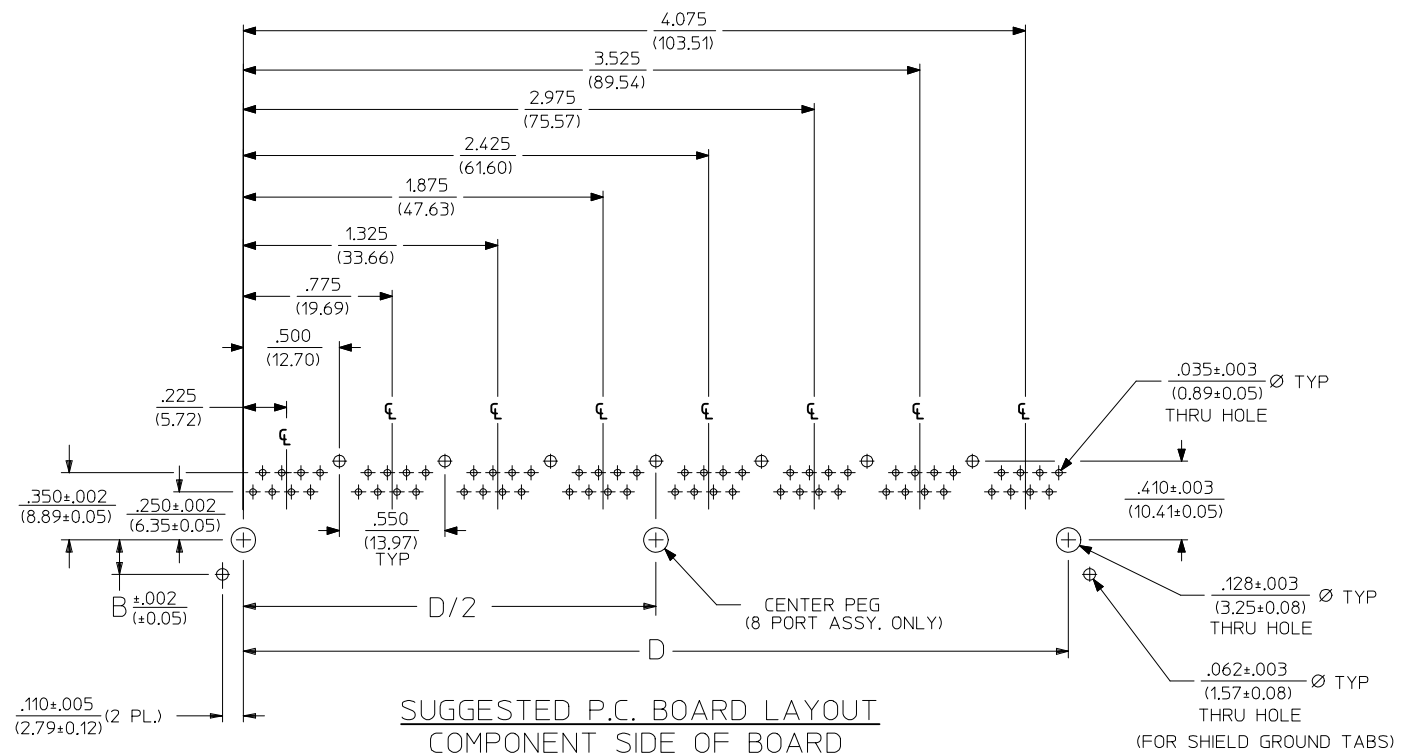
8 LOADED 4 DETAIL  
SCALE: 4/1



8 LOADED 6 DETAIL  
SCALE: 4/1



8 LOADED 8 DETAIL  
SCALE: 4/1



SUGGESTED P.C. BOARD LAYOUT  
COMPONENT SIDE OF BOARD  
8 PORT, 8 LOADED 8  
(SHIELDED) LAYOUT SHOWN  
(SNAP-FIT VERSIONS)

FLANGELESS SNAP-FIT PEGS (SHIELDED)

X=NOT TOOLED	ASSEMBLY NUMBER	CONNECTOR SIZE	NUMBER OF CIRCUITS	NUMBER OF PORTS	DIMENSION "B"	DIMENSION "D"	PACKAGING STYLE	PACKAGING SPECIFICATION
X	43223-8528	8	8	2	.180/(4.57)	1.000/(25.40)	TRAY	PK-44150-004
	43223-8546	8	8	4	.180/(4.57)	2.100/(53.34)	TRAY	PK-44150-004
X	43223-8564	8	8	6	.180/(4.57)	3.200/(81.28)	TRAY	PK-44150-004
	43223-8582	8	8	8	.180/(4.57)	4.300/(109.32)	TRAY	PK-44150-004

NOTES:  
1. RECOMMENDED PCB THICKNESS: .062±.005/(1.57±0.13)

SEE SHEET 1 EC NO: UCP2017-0615 DRWNAFENG02 2016/09/19 CHKD: APPR:KLANG 2016/09/28 A10	QUALITY SYMBOLS ▽=0 ▽=0	GENERAL TOLERANCES (UNLESS SPECIFIED) mm INCH 4 PLACES ± --- ± --- 3 PLACES ± --- ± .015 2 PLACES ± 0.38 ± --- 1 PLACE ± --- ± --- ANGULAR ±1/2°	DIMENSION STYLE IN/MM DRAWN BY: RHOLTS DATE: 2004/06/04 CHECKED BY: LSCHMIDT DATE: 2004/06/04 APPROVED BY: FSMITH DATE: 2004/06/04	SCALE 2:1 DESIGN UNITS INCH THIRD ANGLE PROJECTION	LOW PROFILE GANGED, RIGHT ANGLE MODULAR JACK ASSEMBLY, LEAD-FREE <b>MOLEX INCORPORATED</b> SD-43223-001 SHEET NO. 5 OF 5
	DRAFT WHERE APPLICABLE MUST REMAIN WITHIN DIMENSIONS		SEE CHART	MATERIAL NO. DOCUMENT NO.	
			SIZE	THIS DRAWING CONTAINS INFORMATION THAT IS PROPRIETARY TO MOLEX INCORPORATED AND SHOULD NOT BE USED WITHOUT WRITTEN PERMISSION	