

PART NUMBER	REV	FIRST USED	TERMINATOR	FEED TYPE	DESCRIPTION
1339753-1	A		BENCH & LEADMAKER	MECH POST FEED	HD-I APPLICATOR
7-1339753-1	A		BENCH & LEADMAKER	MECH POST FEED	-1 AND SPARE PARTS
7-1339753-7	A		-	-	SPARE PARTS KIT

CRIMP DATA ESCUBEDO TERMINAL AMP CRIMP SPECS

TERMINAL NAME: FASTIN TYPE TAB 6.3 SERIES.

CRIMP	SIZE	TYPE	RANGE
WIRE	2.79 [.110 IN]	F	1.00mm ² - 2.50mm ²
INSUL	4.32 [.170 IN]	F	3.00-4.30 [.118-.169 IN]
WIRE STRIP LENGTH	APPL INSTRUCTION		
4.80-5.60 [.189-.220 IN]	408-8323		

TERMINAL	FEED
APPL SPEC	30.00 [.181 IN]

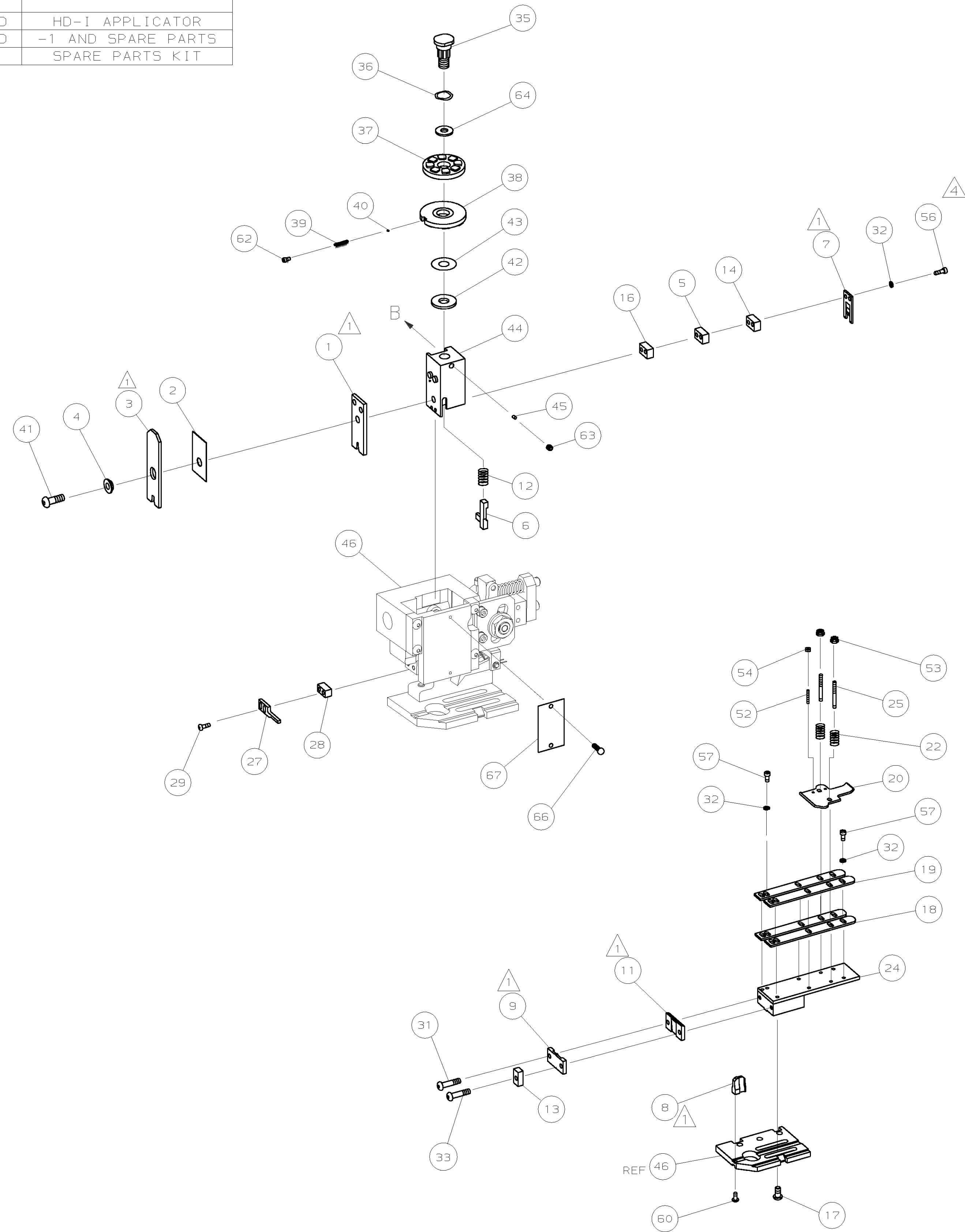
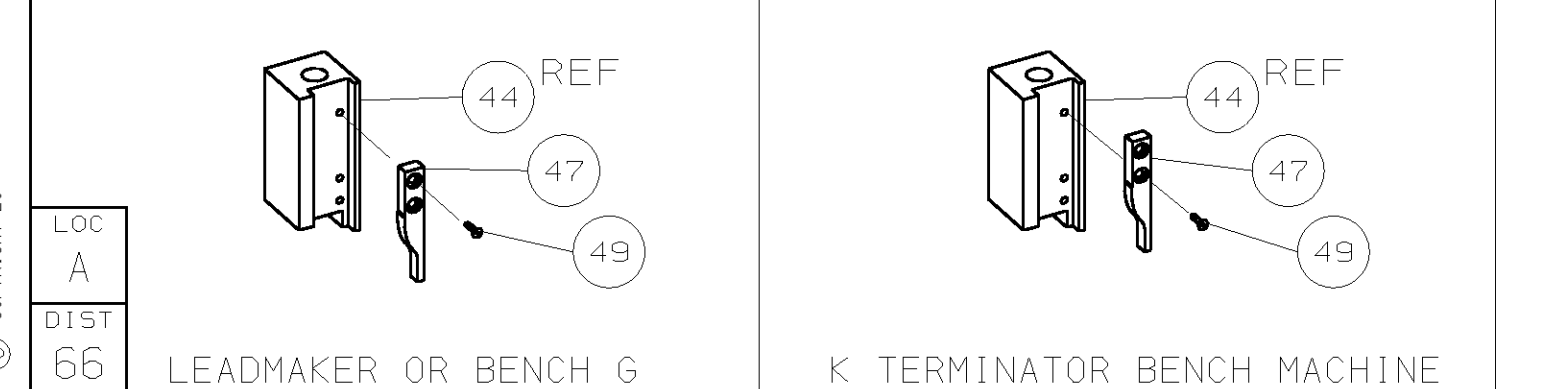
TERMINALS APPLIED

AMP PN	MFR PN	-	-	-
1572585-1	6434.00	-	-	-
1572585-2	6434.01	-	-	-
1572585-3	6434.03	-	-	-
1572585-4	6434.30	-	-	-
1572585-5	6434.31	-	-	-

WIRE SIZE	CRIMP HEIGHT	PIN PN AND LENGTH [IN]
2.50mm ²	2.00 ±0.05 [.079 ±.002 IN]	6-354778-9 [.2840]
1.50mm ²	1.78 ±0.05 [.070 ±.002 IN]	8-354778-5 [.2920]

- ▲ RECOMMENDED SPARE PARTS.
- 2. GREASE RAM, CAM, CAM FOLLOWER AND FEED ROD LIGHTLY.
- 3. LUBRICATE DAILY PER THE APPLICATOR INSTRUCTION SHEET SUPPLIED WITH THE APPLICATOR.
- ▲ CUT TO LENGTH AT ASSEMBLY.
- ▲ WIRE AND INSULATION RANGE SHOWN IS THAT OF THE TERMINAL.
- ▲ CRIMP DATA CALCULATED BY TYCO LTD.

VIEW B ROTATED 180°



QTY	REV	REV	PART NO	DESCRIPTION	ITEM NO
-	1	1	1339753	PRINT, APPLICATOR LOG SHEET	73
-	1	1	1338705-2	DOCUMENTATION PACKAGE	72
-	-	-	-	-	71
-	-	-	-	-	70
-	-	-	-	-	69
-	-	-	-	-	68
-	1	1	461264-1	PLATE, IDENTIFICATION	67
-	2	2	21017-2	SCR,DRIVE (#2X.19) ID PLATE	66
-	-	-	-	-	65
-	1	1	986950-1	WASHER, FLAT PRECISION	64
-	1	1	3-18031-0	SCR,SKT SET (M6X6) RAM	63
-	1	1	18023-9	SCR,SKT CAP (M4X6) CP D5C	62
-	-	-	-	-	61
-	1	1	18024-7	SCR,BHC (M4X10) ANVIL	60
-	-	-	-	-	59
-	-	-	-	-	58
-	6	6	1-18023-0	SCR,SHC (M4X8) STRIP GUIDE	57
-	2	2	1-18023-5	SCR,SHC (M4X25) SLUG BLADE	56
-	-	-	-	-	55
-	2	2	18029-1	NUT, HEX (M3) DRAG	54
-	2	2	986965-1	NUT, HEX SL (M4) DRAG STUD	53
-	2	2	2-18032-2	SCR,SKT SET (M3X10) DRAG	52
-	-	-	-	-	51
-	-	-	-	-	50
-	1	1	18024-3	SCR,BHC (M3X10) CAM	49
-	-	-	-	-	48
-	1	1	1338676-1	CAM, POST-FEED 30 & 40 mm ST	47
-	1	1	1338662-1	APPLICATOR, BASIC (SUBASSY)	46
-	1	1	690191-1	PLUG, NYLON	45
-	1	1	1320998-1	RAM	44
-	1	1	690125-1	WASHER, LAMINATED	43
-	1	1	690124-1	WASHER, RAM	42
-	1	1	2-18024-6	SCREW,BHC (M8X25) CRIMPER	41
-	1	1	23241-1	BALL, STEEL	40
-	1	1	2-22278-7	SPRING, COMPRESSION	39
-	1	1	1320922-1	DISC, INSULATION	38
-	1	1	354777-1	WIRE DISC, PLASTIC	37
-	1	1	22480-5	WASHER, SPRING	36
-	1	1	690212-1	POST, RAM	35
-	-	-	-	-	34
-	1	1	4-18024-7	SCR,BHC (M4X25) SHEAR PL	33
-	8	8	18025-2	WASHER, LOCK (M4) SHEAR BL	32
-	1	1	1-18024-0	SCR,BHC (M4X20) SHEAR PL	31
-	-	-	-	-	30
-	2	2	18024-8	SCR,BHC (M4X12) STRIPPER	29
-	1	1	3-690451-2	SPACER, STRIPPER	28
-	1	1	240639-1	STRIPPER	27
-	-	-	-	-	26
-	2	2	1320906-1	DRAG, STUD	25
-	1	1	1320995-1	PLATE, STRIP GUIDE	24
-	-	-	-	-	23
-	2	2	4-22281-1	SPRING, DRAG	22
-	-	-	-	-	21
-	1	1	1338665-1	DRAG, STOCK	20
-	2	2	1338663-3	GUIDE, UPPER STRIP	19
-	2	2	1338663-3	GUIDE, LOWER STRIP	18
-	4	4	1-18024-8	SCR,BHC (M6X12) STRIP 6D PL	17
-	1	1	1338708-1	SPACER, SLUG BLADE	16
-	-	-	-	-	15
-	1	1	7-240641-2	SPACER, SLUG BLADE	14
-	1	1	1-690481-0	SPACER, HOLD DOWN	13
-	1	1	23846-1	SPRING, HOLD DOWN	12
-	1	1	240644-1	PLATE, REAR SHEAR	11
-	-	-	-	-	10
-	1	1	690482-4	PLATE, FRONT SHEAR	9
1	2	1	4-1333219-2	ANVIL	8
-	1	1	690474-4	BLADE, SLUG	7
-	1	1	3-455892-1	HOLD DOWN, TERMINAL	6
-	1	1	1-240641-0	SPACER, SLUG BLADE	5
-	1	1	238009-1	SPACER, BLOCK CRIMPER	4
1	2	1	3-1213077-3	CRIMPER, INSULATION	3
-	1	1	1-455888-2	SPACER, CRIMPER	2
1	2	1	2-456408-1	CRIMPER, WIRE	1

QTY REQD PER ASSY	MATL	HT TR	FIN
-	-	-	-

DIMENSIONS: mm [INCHES] MATL - HT TR - FIN -
DO NOT SCALE PRINT.
TOLERANCES UNLESS OTHERWISE SPECIFIED:
1 PLC DEC ±
2 PLC DEC ±
3 PLC DEC ±
ANGLES ±
SURF TEXTURE: ✓
REMOVE BURRS, BREAK SHARP EDGES RO.38 MAX

DR	13SEP04	APP	13SEP04	F.BACKHURST	AMP Tyco Electronics Harrisburg, PA 17105-3608
L.L.OFTHOUSE		REL	11OCT04	L.L.OFTHOUSE	

NAME: END FEED HD-I APPLICATOR MACHINE REF: HD-I APPL
SCALE: - DWG NO: 1339753 SHEET REV: 1 OF 1 REV: A

THIS DRAWING IS A CONTROLLED DOCUMENT.

LAYOUT L1339753
SET UP GAGE 458638-3

RELEASER FOR PUBLICATION
BY APP INCORPORATED. ALL RIGHTS RESERVED.

THIS DRAWING IS UNRELEASED.
LOC A
DISTR 66
AMP 1756 REV 3-92

1339753