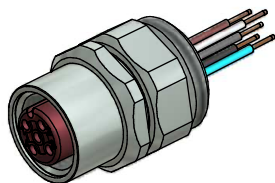


**Contact assignment:**

- 1) brown
- 2) white
- 3) blue
- 4) black
- 5) grey



**Technical specification:**

Rated voltage: IEC 61076-2-101	60 V
Current rating: IEC 61076-2-101	4 A at 40°C
Insulation resistance: IEC 60512	>=100 MΩ
Pollution degree: IEC 60664-1	3/2
Degree of protection: IEC 60529	IP 67, in mated condition
Temperature range: IEC 60664-1	+100°C - 30.000h +125°C - 8.000h +150°C - 2.000h
Mating cycles: IEC 60512-9a	>=100

**Materials:**

Contact:	CuZn, CuBe
Contact plating:	Nickel, gold plated
Contact carrier:	PBT GF, UL 94
Sealing:	FPM
Counternut:	CuZn, nickel plated
Socket housing:	CuZn, nickel plated
Grouting:	Polyurethane-resin, UL 94

**Installation specification:**

recommended torque:	1-1,2 Nm
Conec installation tool:	Torque wrench: 36-000200 Insert across flats 17: 36-000230

Part no:	Description:	Pos	Length L:	Wire:
43-01127	SAL - HT - 12 - FKP5.1 - 0,5	5	0,5m	Copolymer, UL AWG 24
43-xxxxx	SAL - HT - 12 - FKP5.1 - ...	5	x	

DO NOT ALTER CAD DRAWING BY HAND Directive 2002/95/EC RoHS compliant	Index: b 01.09.10 fro Ä3696 specification of wires changed, data sheet revised	dim. in mm	title: <b>Female socket M12x1 with wires,          frontmounting, reposition, HT</b>		
	tolerance of wire: L <= 0,5m: L + 20mm L > 0,5m: L + 4%				date
	THIS DRAWING MAY NOT BE COPIED OR REPRODUCED IN ANY WAY, AND MAY NOT BE PASSED ON TO A THIRD PARTY WITHOUT WRITTEN PERMISSION. OWNERSHIP AND COPYRIGHT OF CONEC GmbH	drawn	04.04.07	Franz	<b>43K1A286</b>
		appd.	04.04.07	Mankopf	