


SIGN	DATE	DESCRIPTION	APPROVER

THIS IS CAD DRAWING, DO NOT REVISE MANUALLY!!!

Material

- Terminal body(metal housing): Brass(CuZn),Ni plated
- Terminal screw: Steel Zinc plating "-" slot type
- Wire guard: PhBz ,Tin plated
- Insulator (housing) Body: Thermoplastic (UL94V-0)
- Insulator (housing) Cover: Thermoplastic (UL94V-0)

Electrical cULus

- Voltage rating: 300VAC
- Current rating: 10A
- Wire range:
 - Solid wire(AWG): 14-28
 - Stranded wire(AWG): 14-28
- Torque: 1.7Lb-In
- Screw: M2
- Wire strip length: 6-7mm
- Withstanding Voltage: 1.6KV
- Operating temperature: -40°C to +115°C
- Safety Approval: 

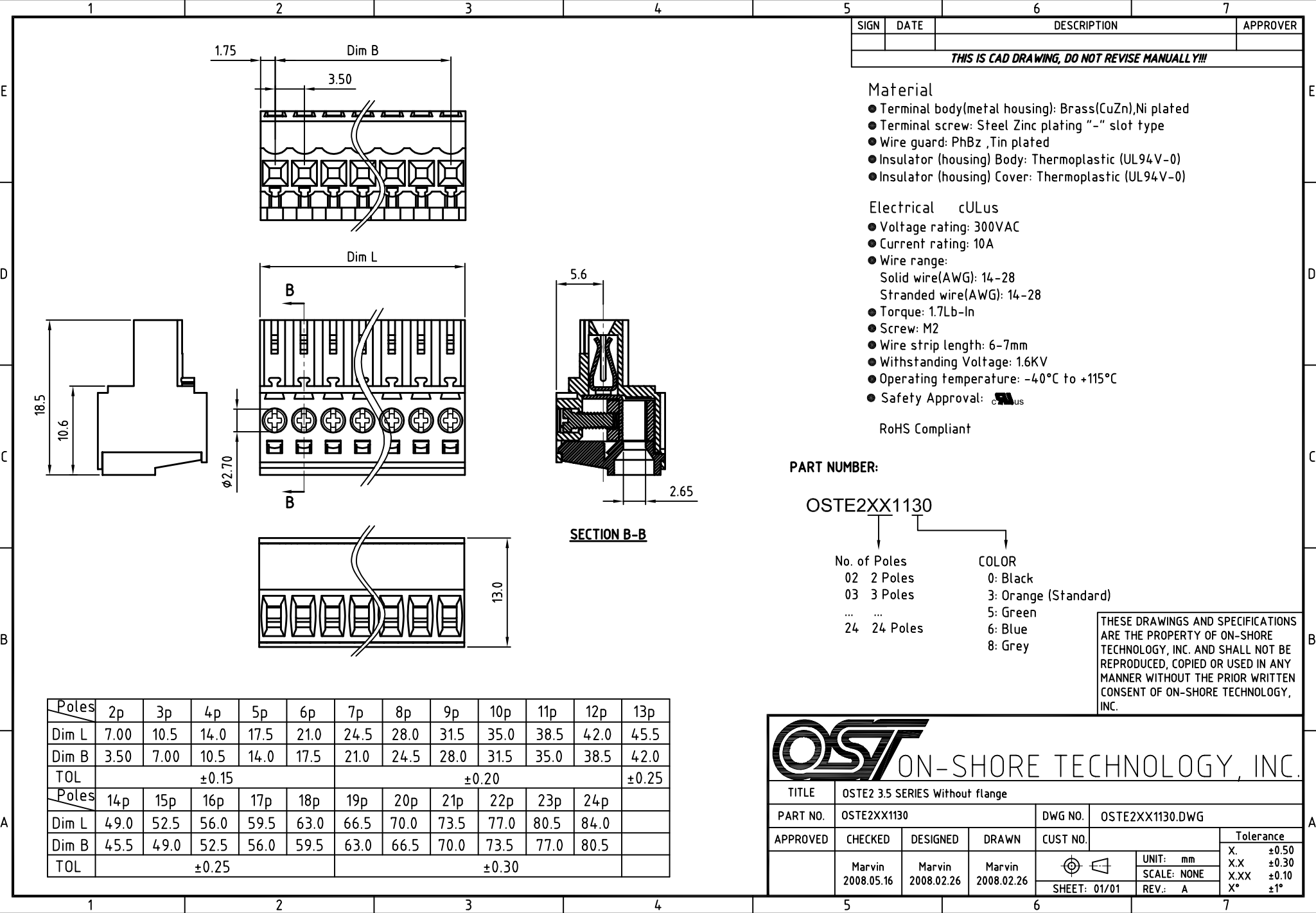
RoHS Compliant

PART NUMBER:

OSTE2XX1130

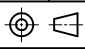
- | | |
|--|--|
| <p>No. of Poles</p> <p>02 2 Poles</p> <p>03 3 Poles</p> <p>... ..</p> <p>24 24 Poles</p> | <p>COLOR</p> <p>0: Black</p> <p>3: Orange (Standard)</p> <p>5: Green</p> <p>6: Blue</p> <p>8: Grey</p> |
|--|--|

THESE DRAWINGS AND SPECIFICATIONS ARE THE PROPERTY OF ON-SHORE TECHNOLOGY, INC. AND SHALL NOT BE REPRODUCED, COPIED OR USED IN ANY MANNER WITHOUT THE PRIOR WRITTEN CONSENT OF ON-SHORE TECHNOLOGY, INC.



Poles	2p	3p	4p	5p	6p	7p	8p	9p	10p	11p	12p	13p
Dim L	7.00	10.5	14.0	17.5	21.0	24.5	28.0	31.5	35.0	38.5	42.0	45.5
Dim B	3.50	7.00	10.5	14.0	17.5	21.0	24.5	28.0	31.5	35.0	38.5	42.0
TOL	±0.15						±0.20					±0.25
Poles	14p	15p	16p	17p	18p	19p	20p	21p	22p	23p	24p	
Dim L	49.0	52.5	56.0	59.5	63.0	66.5	70.0	73.5	77.0	80.5	84.0	
Dim B	45.5	49.0	52.5	56.0	59.5	63.0	66.5	70.0	73.5	77.0	80.5	
TOL	±0.25						±0.30					



TITLE		OSTE2 3.5 SERIES Without flange				
PART NO.	OSTE2XX1130			DWG NO.	OSTE2XX1130.DWG	
APPROVED	CHECKED	DESIGNED	DRAWN	CUST NO.		
	Marvin 2008.05.16	Marvin 2008.02.26	Marvin 2008.02.26			
					UNIT: mm	Tolerance
					SCALE: NONE	X.X ±0.50
				SHEET: 01/01	REV: A	X.XX ±0.10
						X° ±1°