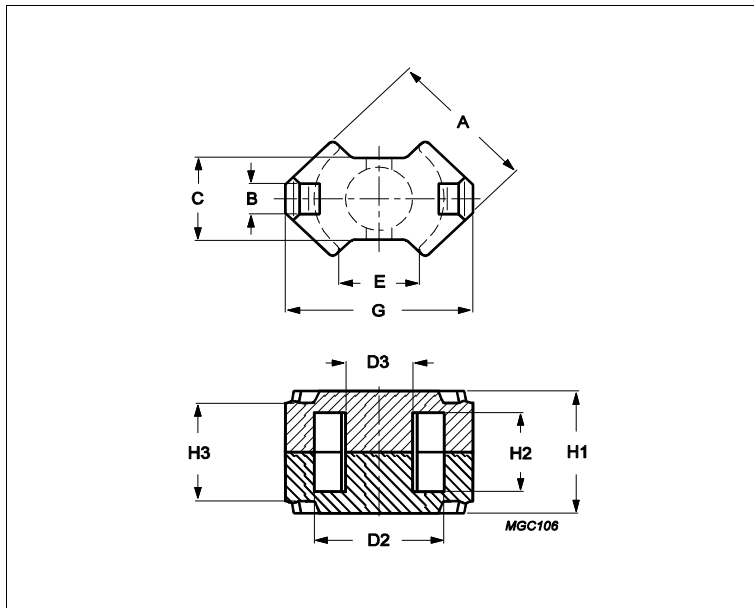


Core **RM10/I**



Effective parameters			
	Parameter	Value	Unit
$\Sigma(I/A)$	core factor (C1)	0.462	mm ⁻¹
Ve	effective volume	4310	mm ³
Le	effective length	44.6	mm
Ae	effective area	96.6	mm ²
Amin	minimum area	89.1	mm ²
m	RM10/I	≈ 22	g/set

Dimensions for product: RM10/I

	Nom	Tol +	Tol -	Max	Min	Unit
A	24.70	0.00	1.10	24.70	23.60	mm
B	5.10	0.10	0.10	5.20	5.00	mm
C	13.50	0.00	0.50	13.50	13.00	mm
D2	21.20	0.90	0.00	22.10	21.20	mm
D3	10.90	0.00	0.40	10.90	10.50	mm
E					10.90	mm
G	28.50	0.00	1.30	28.50	27.20	mm
H1	18.60	0.10	0.10	18.70	18.50	mm
H2	12.40	0.60	0.00	13.00	12.40	mm
H3	16.20	0.25	0.25	16.45	15.95	mm

Inductance factor

Material	Value	Tol +	Tol -	Unit
3C91	5500	25%	25%	nH/turns ²
3C94	4500	25%	25%	nH/turns ²
3C95	5500	25%	25%	nH/turns ²
3C96	4050	25%	25%	nH/turns ²
3C97	5500	25%	25%	nH/turns ²
3D3	1900	25%	25%	nH/turns ²
3F36	3000	25%	25%	nH/turns ²
3F4	2200	25%	25%	nH/turns ²
3H3	4400	25%	25%	nH/turns ²

Power loss: 3C91

Core **RM10/I**

Measuring conditions			Max	Unit
100 kHz	200 mT	60 °C	2.200	W/set
Power loss: 3C94				
Measuring conditions			Max	Unit
100 kHz	200 mT	100 °C	2.200	W/set
Power loss: 3C95				
Measuring conditions			Max	Unit
100 kHz	200 mT	100 °C	2.100	W/set
100 kHz	200 mT	25 °C	2.200	W/set
Power loss: 3C96				
Measuring conditions			Max	Unit
100 kHz	200 mT	100 °C	1.900	W/set
400 kHz	50 mT	100 °C	0.780	W/set
Power loss: 3C97				
Measuring conditions			Max	Unit
100 kHz	200 mT	60 °C	2.200	W/set
100 kHz	200 mT	120 °C	2.100	W/set
100 kHz	200 mT	140 °C	2.600	W/set
Power loss: 3F36				
Measuring conditions			Max	Unit
500 kHz	50 mT	100 °C	0.650	W/set
500 kHz	100 mT	100 °C	5.000	W/set
Power loss: 3F4				
Measuring conditions			Max	Unit
1000 kHz	30 mT	100 °C	1.300	W/set
3000 kHz	10 mT	100 °C	2.200	W/set

Bsat					
Measuring conditions			Material	Min	Unit
25 kHz	250 A/m	100 °C	3C91	320	mT
25 kHz	250 A/m	100 °C	3C94	320	mT
25 kHz	250 A/m	100 °C	3C95	330	mT
25 kHz	250 A/m	100 °C	3C96	340	mT
25 kHz	250 A/m	100 °C	3C97	330	mT
25 kHz	250 A/m	100 °C	3F36	340	mT
25 kHz	250 A/m	100 °C	3F4	330	mT

Accessories		
Ordering name	Description	Ordering code
CLI/P-RM10/I	Clip, with ground pin	432202134321
CPV-RM10/I-1S-12PD	Coil former, termoplastic, vertical	432202134061
CPV-RM10/I-1S-12PD-TZ	Coil former, termoplastic, vertical	432202106661
CSV-RM10-1S-10P-C	Coil former, termoset, vertical	432202107411
CSV-RM10-1S-12P	Coil former, termoset, vertical	432202134761

Core **RM10/I**

CSV-RM10-1S-12P-C	Coil former, termoset, vertical	432202107421
CSV-RM10-1S-5P	Coil former, termoset, vertical	432202134722
CSV-RM10-1S-8P	Coil former, termoset, vertical	432202134731
CSV-RM10-1S-8P-C	Coil former, termoset, vertical	432202107471
CSV-RM10-2S-12P	Coil former, termoset, vertical	432202134811
CSV-RM10-2S-8P	Coil former, termoset, vertical	432202134782