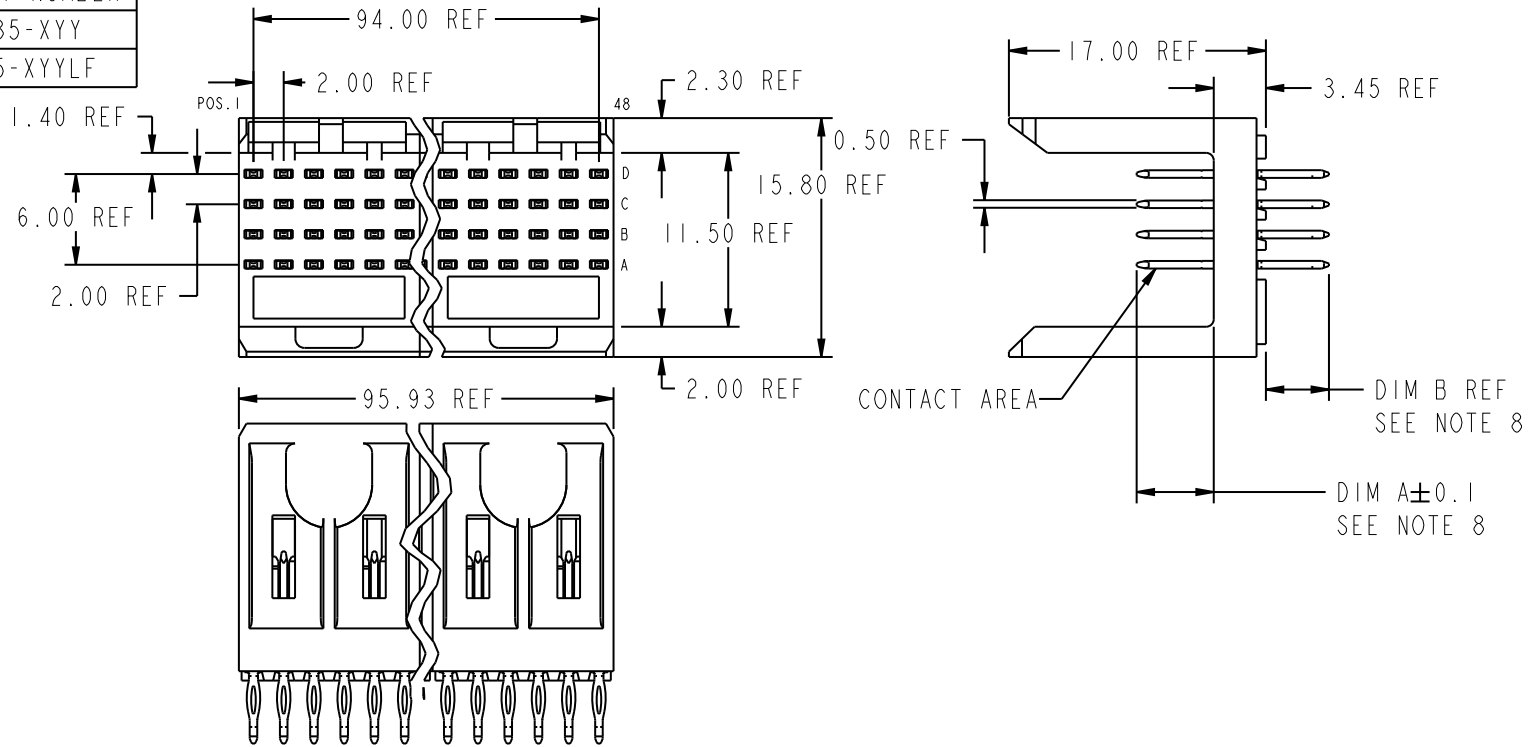


PRODUCT NUMBER
70235-XY
70235-XYLF



PLATING IN CONTACT AREA		
DASH NUMBER	PERFORMANCE LEVEL	NOTES
-AYY	TELCORDIA CO	SEE NOTE 9
-MY	.38μm GOLD MIN.	-
-NIYY	TELCORDIA CO (NXT)	-
-N5YY	TELCORDIA UE (NXT)	-
-1YY	TELCORDIA CO	-
-2YY	TELECOM CLASS	-
-3YY	IEC CLASS I	-
-5YY	TELCORDIA UE	-
-AYYLF	TELCORDIA CO	SEE NOTE 10
-NIYYLF	TELCORDIA CO (NXT) IEC CLASS I	SEE NOTE 10
-N5YYLF	TELCORDIA UE (NXT)	SEE NOTE 10
-1YYLF	TELCORDIA CO IEC CLASS I	SEE NOTE 10
-2YYLF	TELECOM CLASS	SEE NOTE 10
-5YYLF	TELCORDIA UE	SEE NOTE 10

mat'l code				tolerances unless otherwise specified		CUSTOMER	FCJ	
ltr	ecr no.	dr	date	linear	0. x ± 0.3	COPY	www.fciconnect.com	
AG	V06-0498	DCH	2006-05-31		0. xx ± 0.13	projection	title	
AH	DG09-0256	TER	2009-08-19	angles	.xxx ± .051		METRAL SIGNAL HEADER 8 MOD, 4 ROW PRESS-FIT	
-	-	-	-		0° ± 2°		product family	METRAL
AC	V04-0554	TAB	06/07/04	dr	T.BRUNGARD	11/19/99	size	dwg no
AD	V05-0079	HTB	02/03/05	enr	M.STRAWSE	11/19/99	213	
AE	V05-0359	DAI	04/21/05	chr	M.STRAWSE	11/19/99	sheet	
AF	V05-1030	LP	11/18/05	appd	M.STRAWSE	02/29/00	1 of 21	
sheet index	revision	AH	1	AH	21	scale		2:1

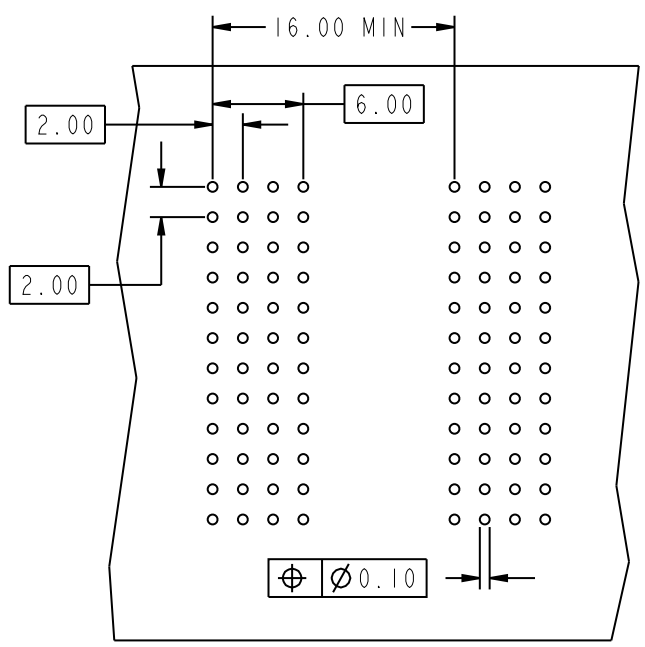


This document is the property of and embodies CONFIDENTIAL and PROPRIETARY information of FCJ. No part of the information shown on this document may be used in any way or disclosed to others without the written consent of FCJ. Copyright FCJ.

1 | 2

3 |

4



REQUIRED PC BOARD LAYOUT
COMPONENT SIDE

SEE PRINT 58351 FOR
ADDITIONAL PCB INFORMATION

KEY		
CODE	DIMENSIONS	
	DIM "A" MATE	DIM "B" TAIL
1	5.00	4.30
2	5.75	4.30
3	6.50	4.30
4	7.25	4.30
5	5.00	13.60
6	5.75	13.60
7	6.50	13.60
8	7.25	13.60
9	5.00	17.00
10	5.75	17.00
11	6.50	17.00
12	7.25	17.00
13	8.25	4.30
14	8.25	13.60
15	8.25	17.00
19	8.00	4.30
20	8.00	13.60
21	8.00	17.00



This document is the property of and embodies
 CONFIDENTIAL and PROPRIETARY information of FCJ.
 No part of the information shown on this
 document may be used in any way or disclosed
 to others without the written consent of FCJ.
 Copyright FCJ.

mat'l code				tolerances unless otherwise specified		CUSTOMER		 www.fcjconnect.com		
ltr	ecn no.	dr	date	linear	0.X ±0.3	COPY		projection		
AH					0.XX ±0.13	MM				title METRAL SIGNAL HEADER 8 MOD, 4 ROW PRESS-FIT
					.XXX ±.051					
				angles	0° ±2°	scale		1:1	product family METRAL	
				dr	T.BRUNGARD	11/19/99	size		dwg no	
				engr	M.STRAWSER	11/19/99	A		70235	
				chr	M.STRAWSER	11/19/99	sheet		213	
				appd	M.STRAWSER	02/29/00	sheet		2	
sheet index	revision sheet									

cage code 22526

PRODUCT NUMBER
70235-XXX
70235-XYLFF

NOTES:

1. FOR DIM A AND B SEE SHEET 2 AND UP.
2. BODY MATERIAL: LIQUID CRYSTAL
POLYMER 30 % GLASS.
FLAME RETARDANT ACC. UL 94-V0.
3. PIN MATERIAL:
PHOSPHOR BRONZE.
4. PLATING ON PRESS-FIT TAIL:
70235 -XXX IS SnPb
70235-XYLFF IS SN (LEAD FREE)
PLATING ON CONTACT AREA CONFORMS TO PERFORMANCE LEVEL SHOWN IN TABLE.
5. PRODUCT MARKING:
PART NUMBER DESIGNATION & BATCH I.D.
6. ALL PRODUCTS WITH PART NUMBERS SHOWN IN SUBSEQUENT TABLES WILL BE PACKAGED IN TUBES. IF TRAY PACKAGING IS REQUIRED, A SUFFIX "P" WILL BE ADDED TO THE END OF THE PART NUMBER. EXAMPLE: XXXXX-XXXP OR XXXXX-XXXPLF
7. PRODUCT SPECIFICATION GS-12-180
APPLICATION SPECIFICATION BUS-20-073
- ⑧ AFTER INSERTION INTO CIRCUIT BOARD WITH QUALIFIED TOOL.
- ⑨ -A PLATING HAS Au FLASH IN PRESS FIT AREA (LEAD FREE).
- ⑩ THE PRODUCTS WHERE THE PART NUMBER ENDS IN LF MEET THE EUROPEAN UNION DIRECTIVES AND OTHER COUNTRY REGULATIONS AS DESCRIBED IN GS-22-008.
- ⑪ FOR LEAD FREE PART NUMBERS, ADD AN "LF" SUFFIX. EXAMPLE: 70235-X01LFF
12. ALL PRODUCTS EXCEPT THOSE WITH PART NUMBERS CONTAINING (DRAWING NO.)-N1--- OR (DRAWING NO.)-N5---WILL WITHSTAND EXPOSURE TO 260°C FOR 60 SECONDS IN A CONVECTION, INFRA-RED OR VAPOR PHASE REFLOW OVEN. PART NUMBERS (DRAWING NO.)-N1--- AND (DRAWINGS NO.)-N5---WILL NOT WITHSTAND REFLOW AND Au CONTACT SURFACE OF THE CONTACTS SHALL BE EXPOSED TO A MAXIMUM 140°C FOR NO LONGER THAN 15 SECONDS IN A WAVE SOLDER APPLICATION.

A

A



This document is the property of and embodies CONFIDENTIAL and PROPRIETARY information of FCI. No part of the information shown on this document may be used in any way or disclosed to others without the written consent of FCI. Copyright FCI.

B

B

mat'l code				tolerances unless otherwise specified		CUSTOMER	FCI www.fciconnect.com	
lfr	ecr no.	dr	date	linear	0.X ±0.3	COPY	 title METRAL SIGNAL HEADER 8 MOD, 4 ROW PRESS-FIT	
AH					0.XX ±0.13	projection		
					.XXX ±.051			
				angles	0° ±2°		product family METRAL code	
		dr	T.BRUNGARD	11/19/99		MM	size	code 213
		enrg	M.STRAWSER	11/19/99		← MM →	dwg no	sheet
		chr	M.STRAWSER	11/19/99		scale	70235	21
		appd	M.STRAWSER	02/29/00		1:1		
sheet	revision							
index	sheet							