

APPLICATOR STYLE CONVERSION CHART. Table with columns: PART NUMBER, REVISION, DESCRIPTION, FEED TYPE, CONVERT TO, PART NUMBERS REQUIRED.

APPLICATOR DATA. Table with columns: CRIMP SIZE, WIRE SIZE, INSUL SIZE, TYPE.

TERMINAL DATA: MOLEX TERMINAL MOLEX CRIMP SPECIFICATION. Table with columns: WIRE STRIP LENGTH, INSULATION DIAMETER RANGE, TERMINAL APPLICATION SPECIFICATION.

TERMINALS APPLIED. Table with columns: TE TERMINAL, MOLEX TERMINAL, TE TERMINAL, MOLEX TERMINAL.

WIRE SIZE, CRIMP HEIGHT, CRIMP HEIGHT REFERENCE SETTING. Table with columns: WIRE SIZE, CRIMP HEIGHT mm [INCH], CRIMP HEIGHT REFERENCE SETTING.

- RECOMMENDED SPARE PARTS
GREASE BEARING SURFACES LIGHTLY
LUBRICATE DAILY PER THE APPLICATOR INSTRUCTION SHEET SUPPLIED WITH THE APPLICATOR.
APPLICATOR SPECIFIC DATA TO BE ENTERED INTO BLANK MEMORY CHIP AT ASSEMBLY.

\*WARNING
ON INSTALLATION, SET WIRE DISC, ITEM 40 TO LARGEST WIRE SIZE SETTING. USE OF SETTINGS BELOW MINIMUM REQUIRED CRIMP HEIGHT SETTING WILL CAUSE DAMAGE TO CRIMP TOOLING.

Table with columns: PART NO, DESCRIPTION, ITEM NO. Lists various components like DEPRESSOR, WIRE, O-RING, PUSH ROD, etc.

ATLANTIC VERSION
Shown on sheets 1 of 4 & 2 of 4
(Pacific version shown on sheets 3 of 4 & 4 of 4)

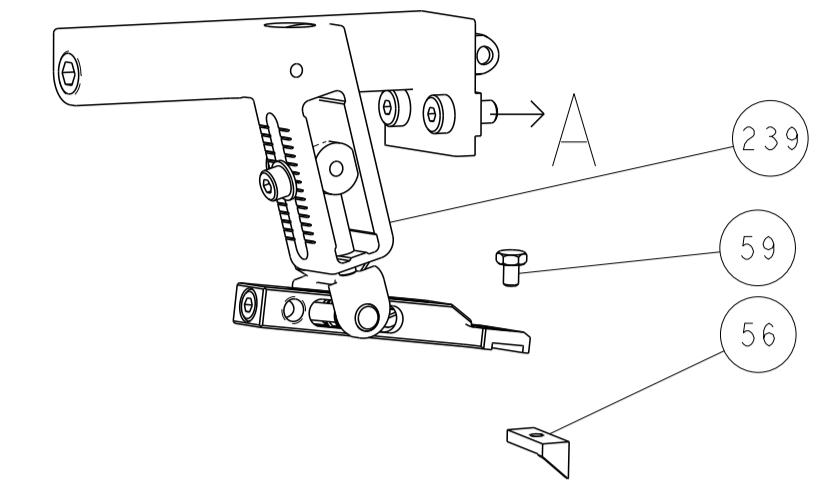
SET UP GAUGE 2119599-1. Table with columns: LOC, DIST, REVISIONS.

Main assembly table with columns: QTY, PART NO, DESCRIPTION, DATE, DWN, APVD. Lists various assembly components.

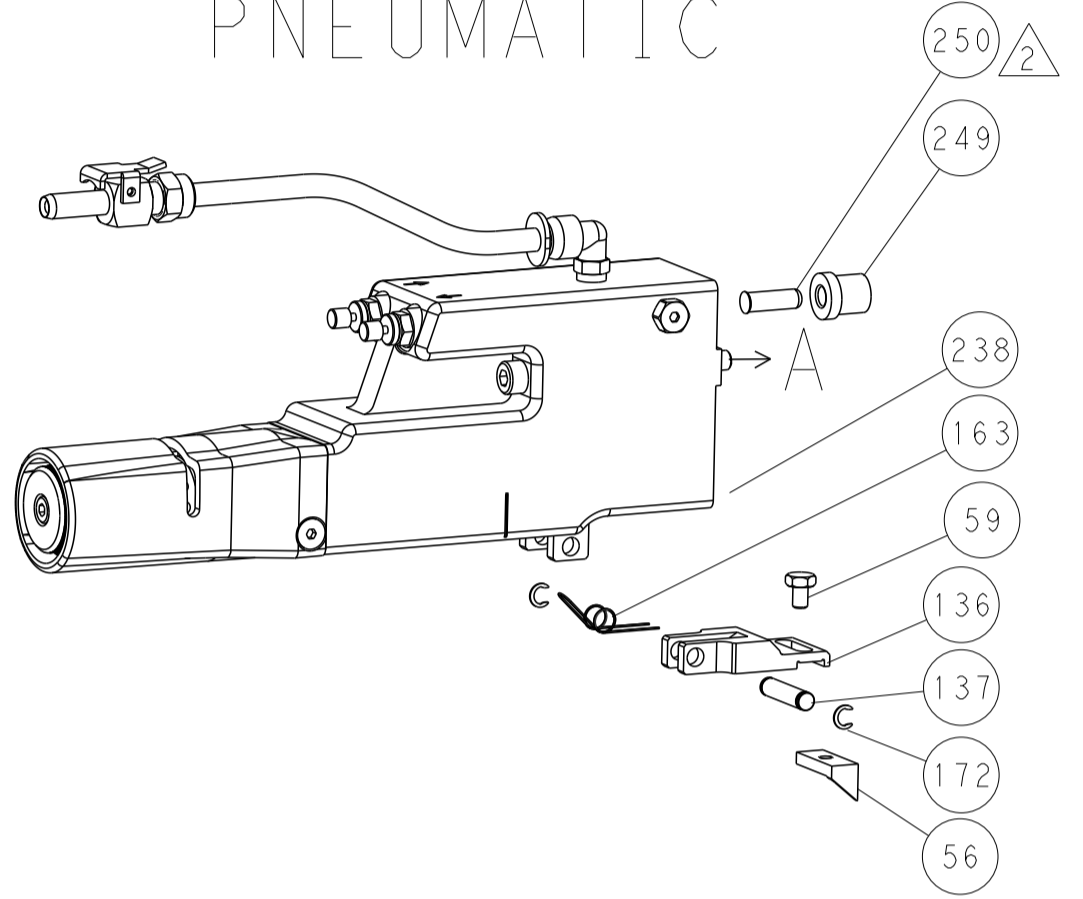
Technical drawing information including dimensions, tolerances, material, and drawing specifications.

LOC	DIST	REV	DATE	BY	APPV
A	66				

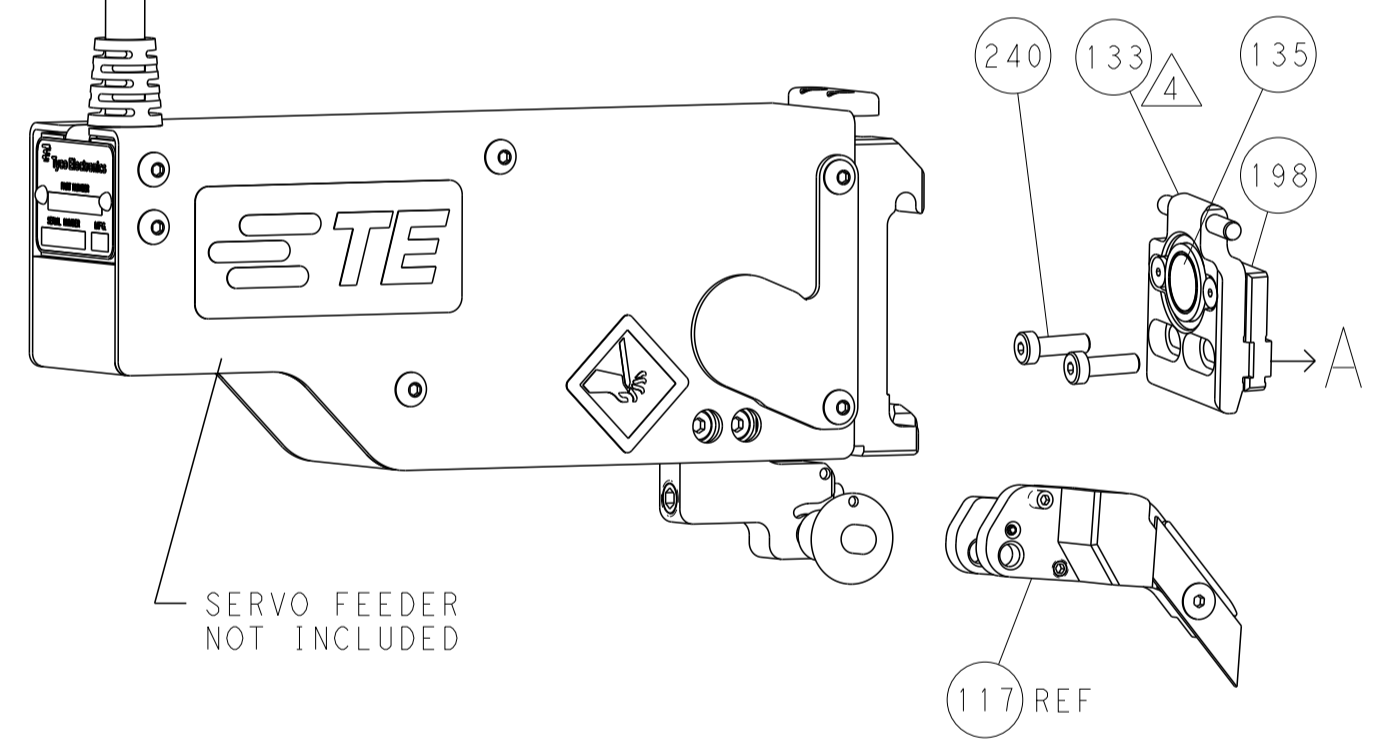
### FEED TYPE MECHANICAL



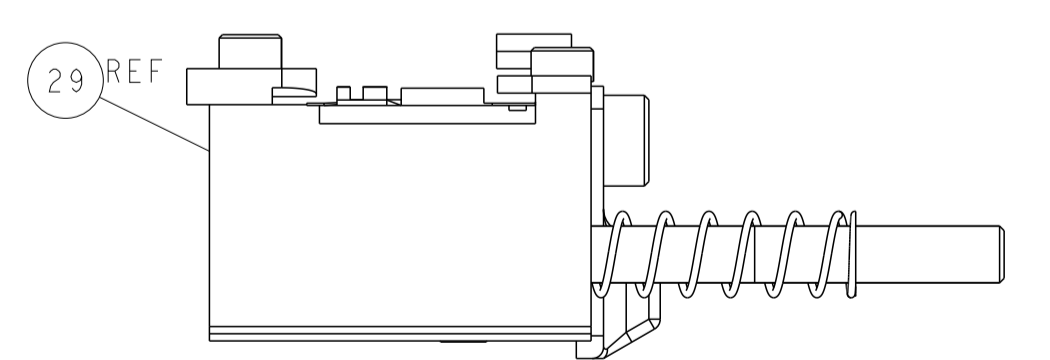
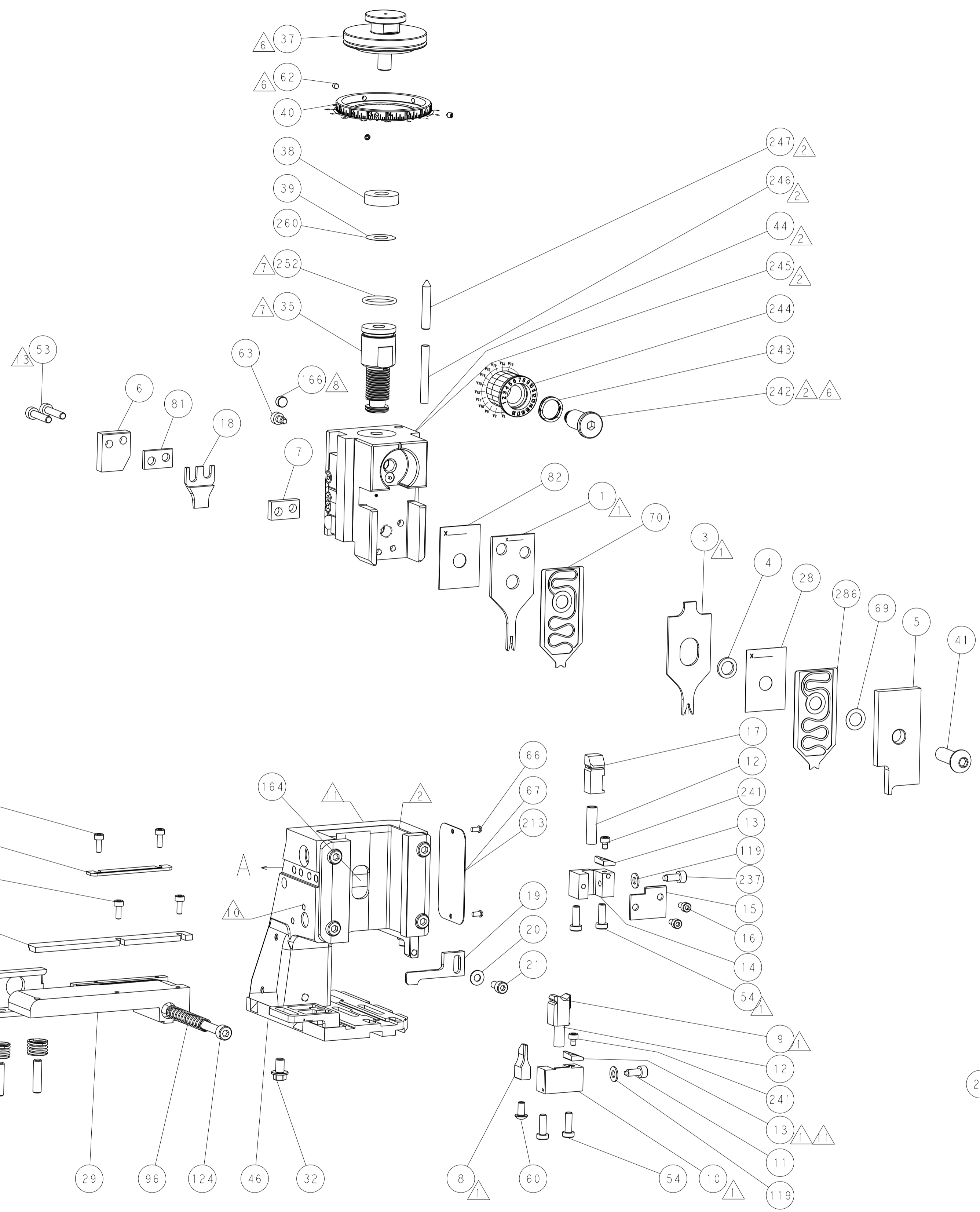
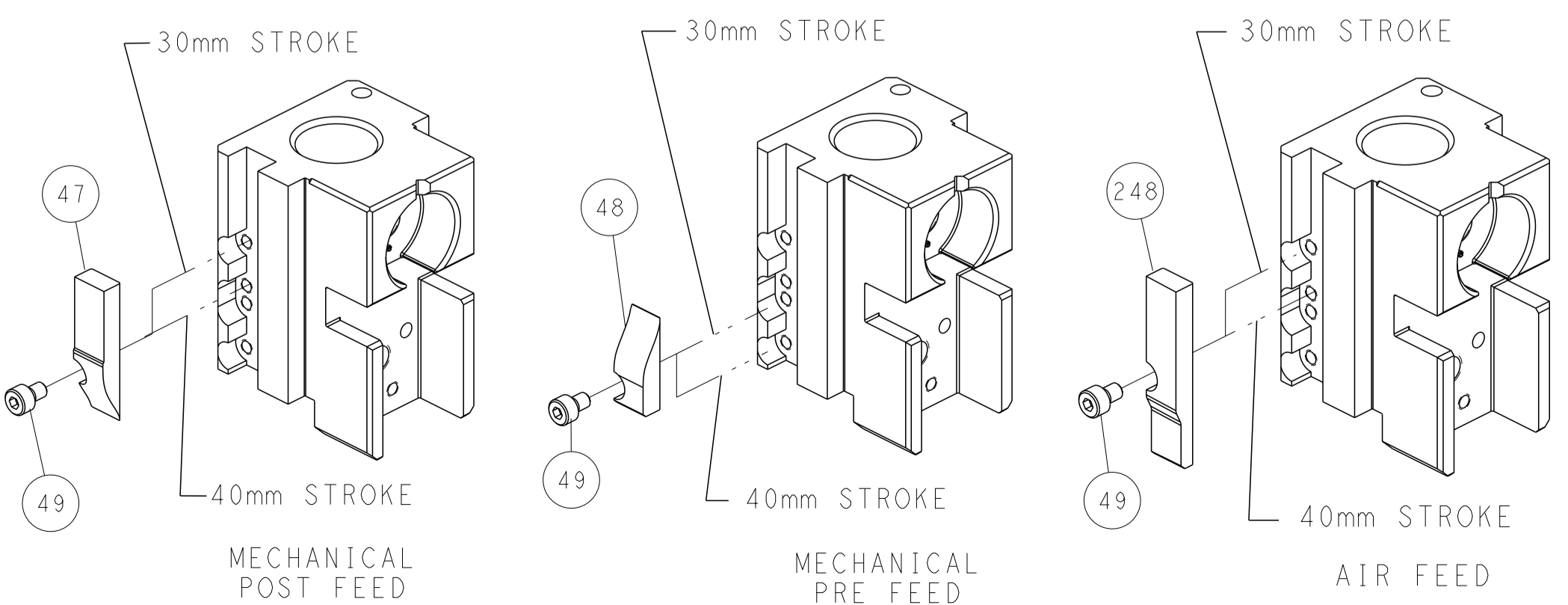
### PNEUMATIC



### SERVO LATCH PLATE



### CAM POSITIONS



FEED TRACK POSITION GUIDE BY INSULATION BARREL

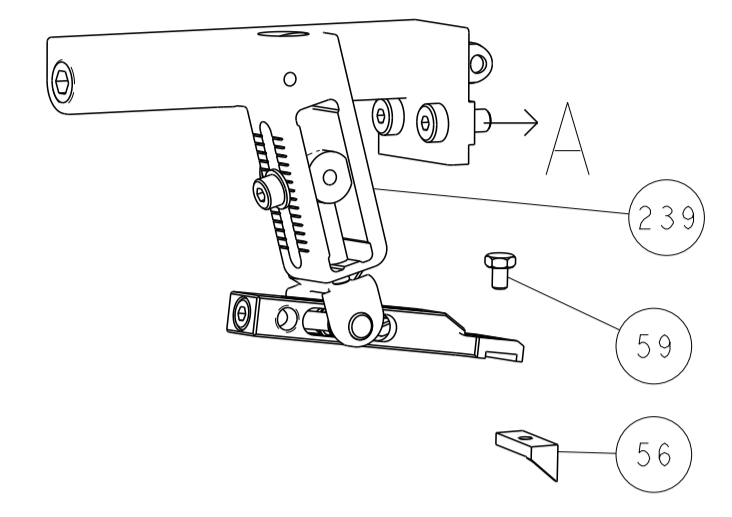
**ATLANTIC VERSION**  
 Shown on sheets 1 of 4 & 2 of 4  
 (Pacific version shown on sheets 3 of 4 & 4 of 4)

DIMENSIONS: mm		TOLERANCES UNLESS OTHERWISE SPECIFIED: 0 PLC ± 1 PLC ± 2 PLC ± 3 PLC ± 4 PLC ± ANGLES ± FINISH		DWN Y. YIN 22MAY2012 CHK G. BAILEY 22MAY2012 APVD S. XI 22MAY2012 PRODUCT SPEC APPLICATION SPEC WEIGHT Customer Accessible Production Drawing		NAME Ocean Side Feed Applicator SIZE CAGE CODE DRAWING NO A1 00779 C=2151432 SCALE 1:2 SHEET 2 OF 4 REV C		TE Connectivity Harrisburg, PA 17105-3608	
-------------------	--	---	--	---	--	---	--	--	--

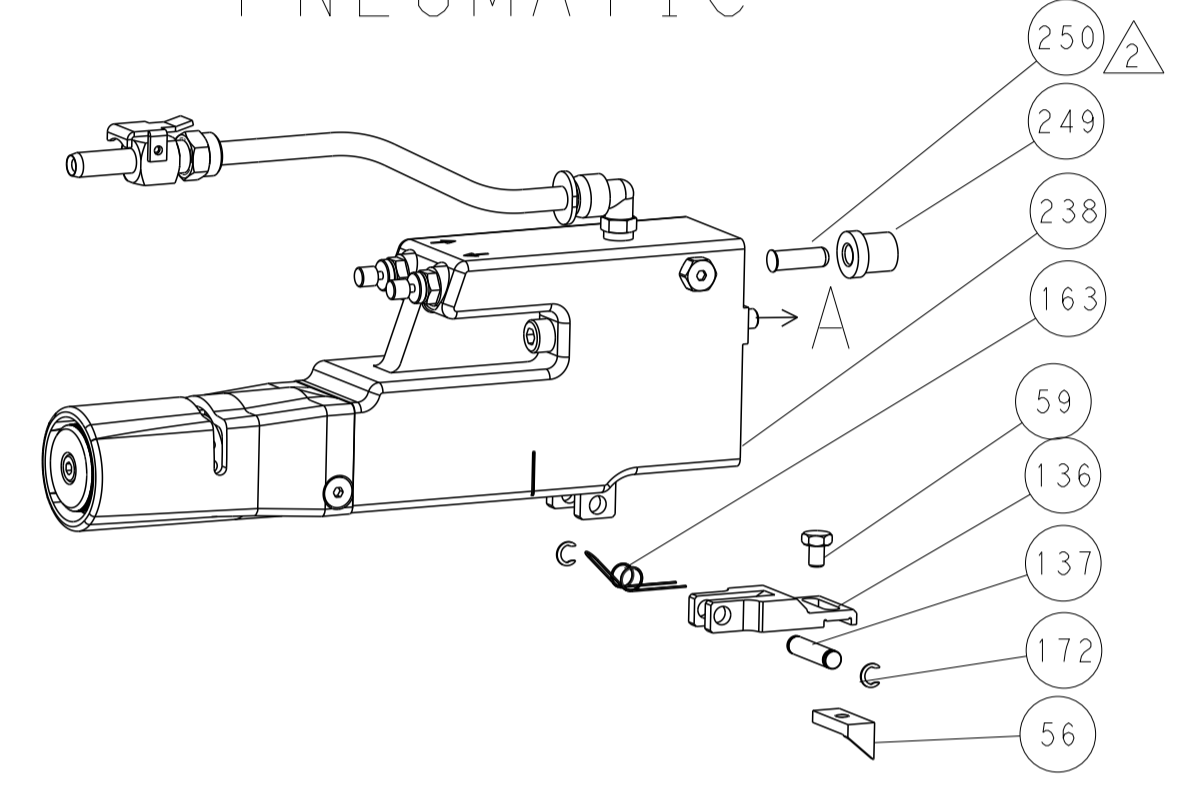


LOC		DIST	REVISIONS			
P	LTH	DATE	DMN	APVD		
A	66	-	-	-	SEE SHEET 1	-

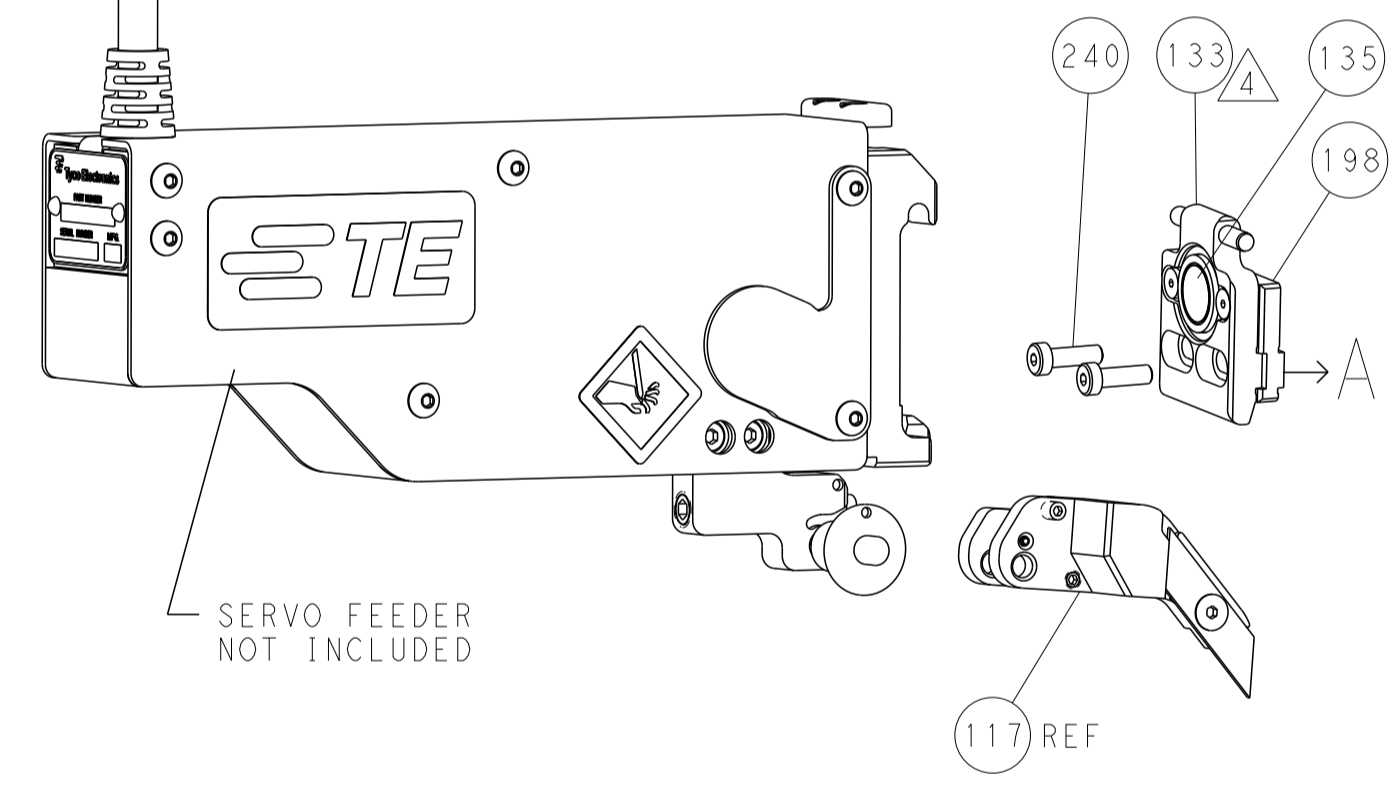
## FEED TYPE MECHANICAL



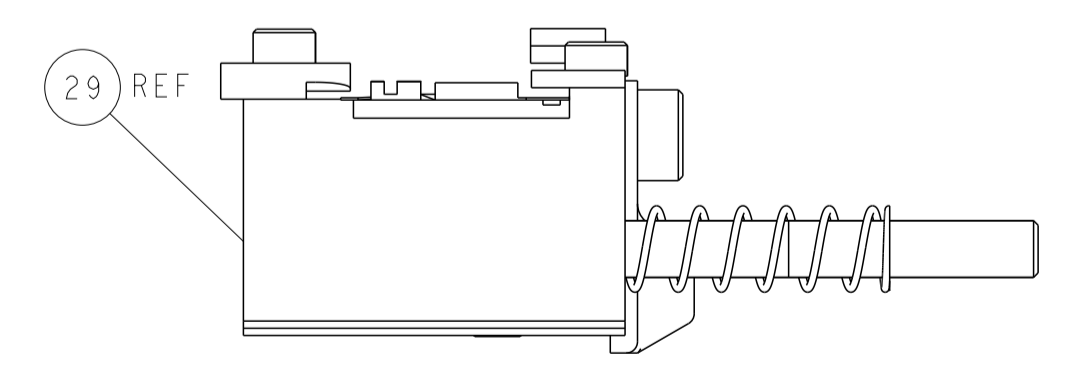
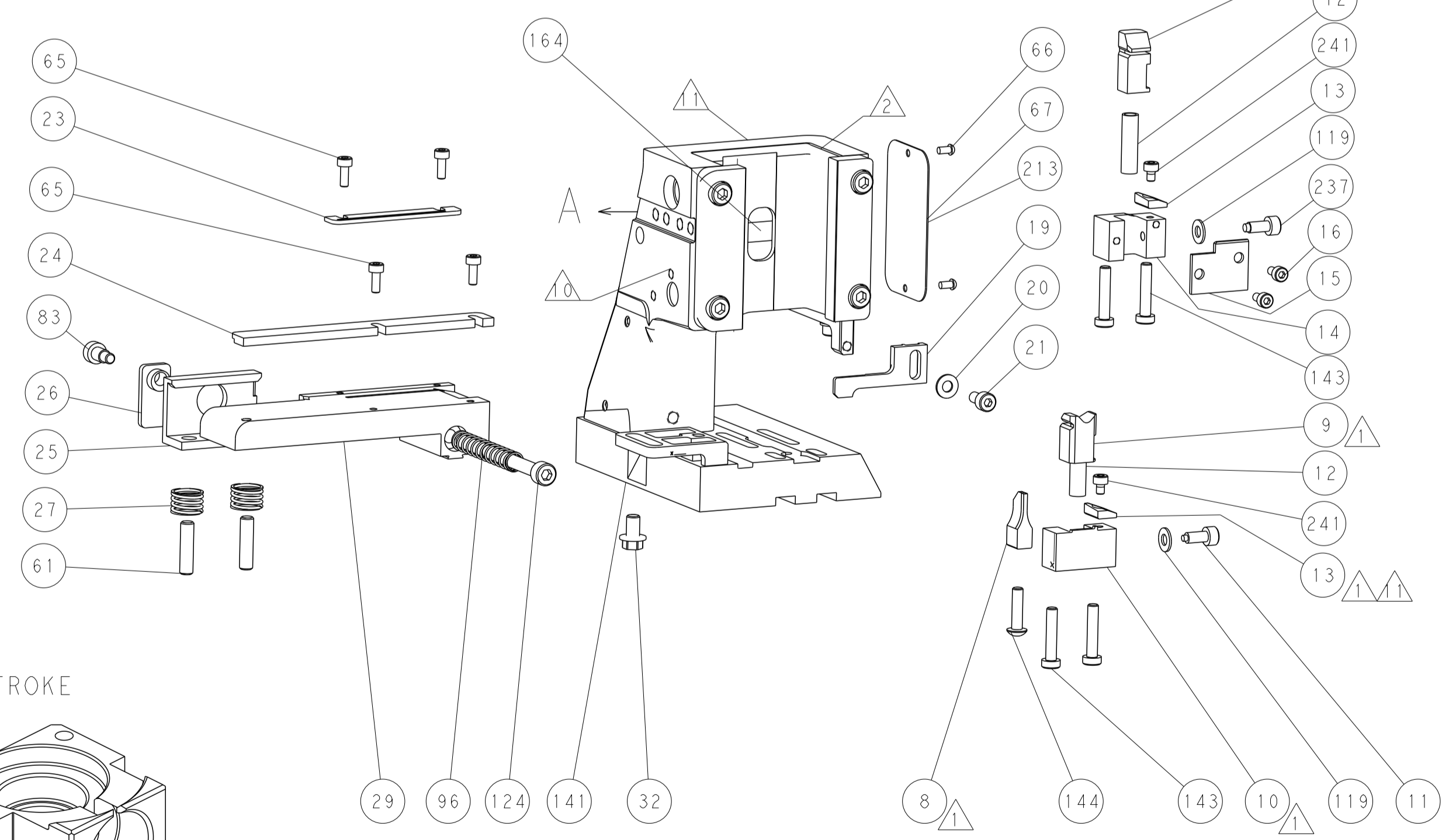
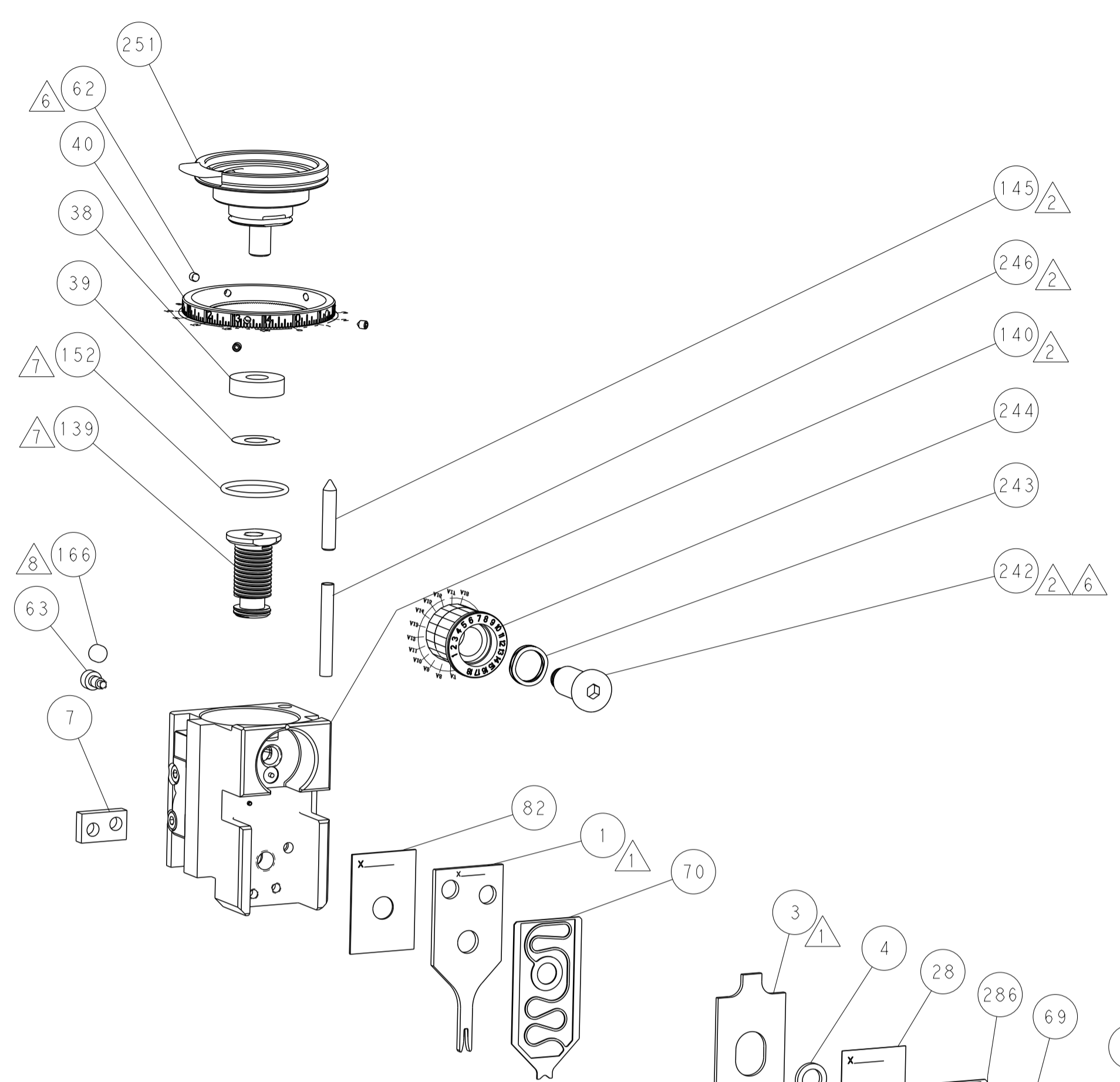
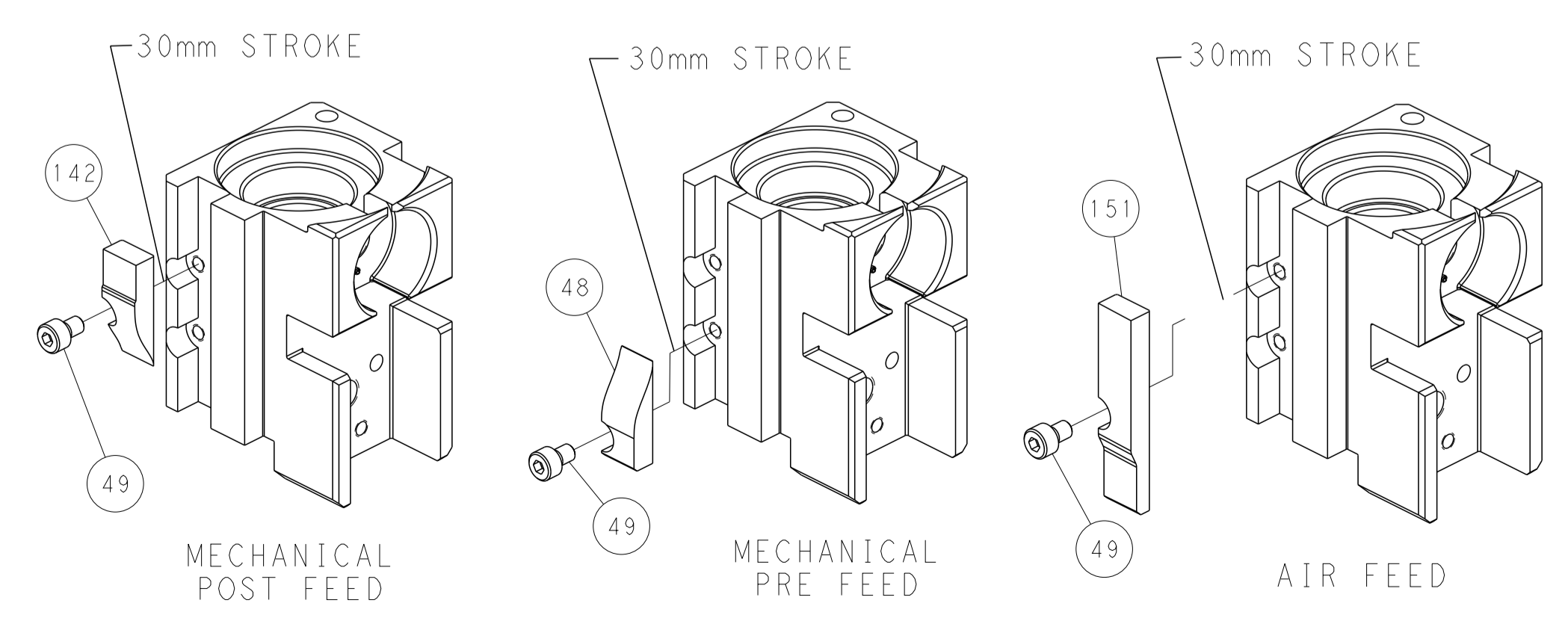
## PNEUMATIC



## SERVO LATCH PLATE



## CAM POSITIONS



**PACIFIC VERSION**  
 Shown on sheets 3 of 4 & 4 of 4  
 (Atlantic version shown on sheets 1 of 4 & 2 of 4)

DIMENSIONS:		TOLERANCES UNLESS OTHERWISE SPECIFIED:		DWN		NAME	
mm	0 PLC	±		Y. YIN	22MAY2012	STE TE Connectivity Harrisburg, PA 17105-3608	
	1 PLC	±		CHK G. BAILEY	22MAY2012	Ocean Side Feed Applicator	
	2 PLC	±		APVD S. XI	22MAY2012		
	3 PLC	±		PRODUCT SPEC			
	4 PLC	±		APPLICATION SPEC			
MATERIAL	ANGLES	FINISH		WEIGHT	SIZE	CAGE CODE	DRAWING NO
					A	00779	C=2151432
				Customer Accessible Production Drawing		SCALE	1:2
					SHEET 4 OF 4		REV C