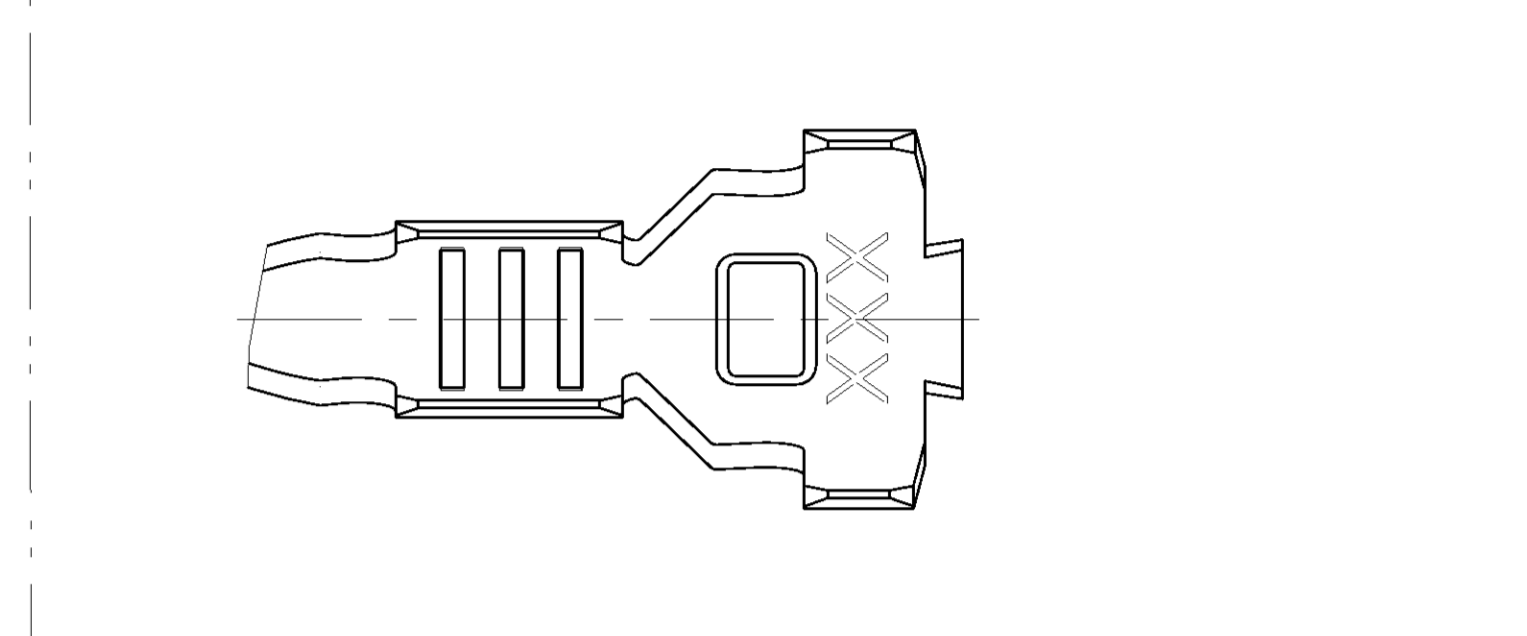
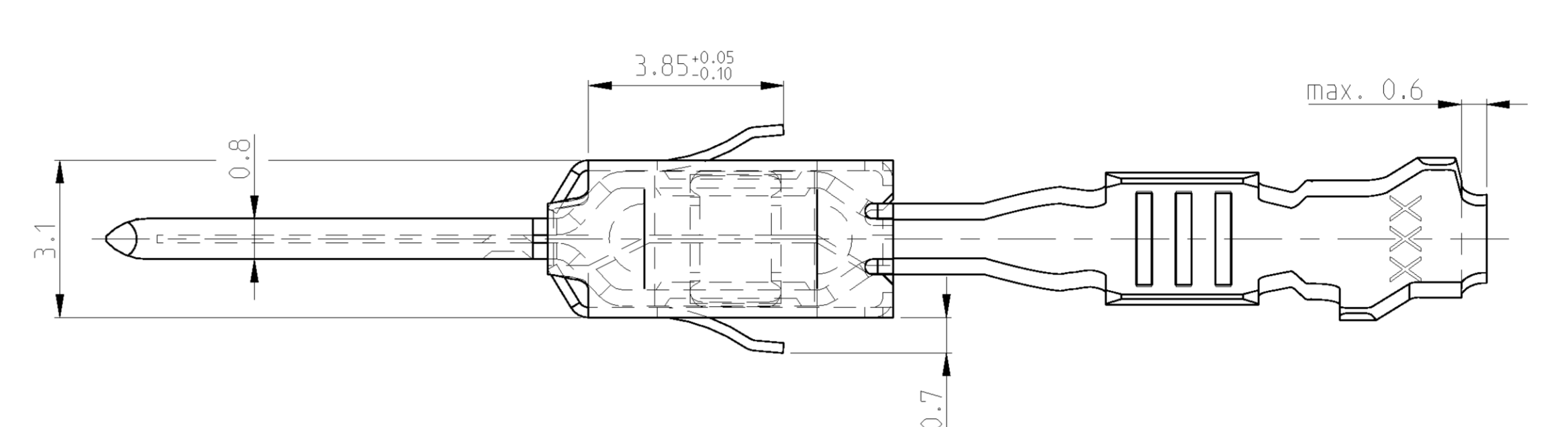


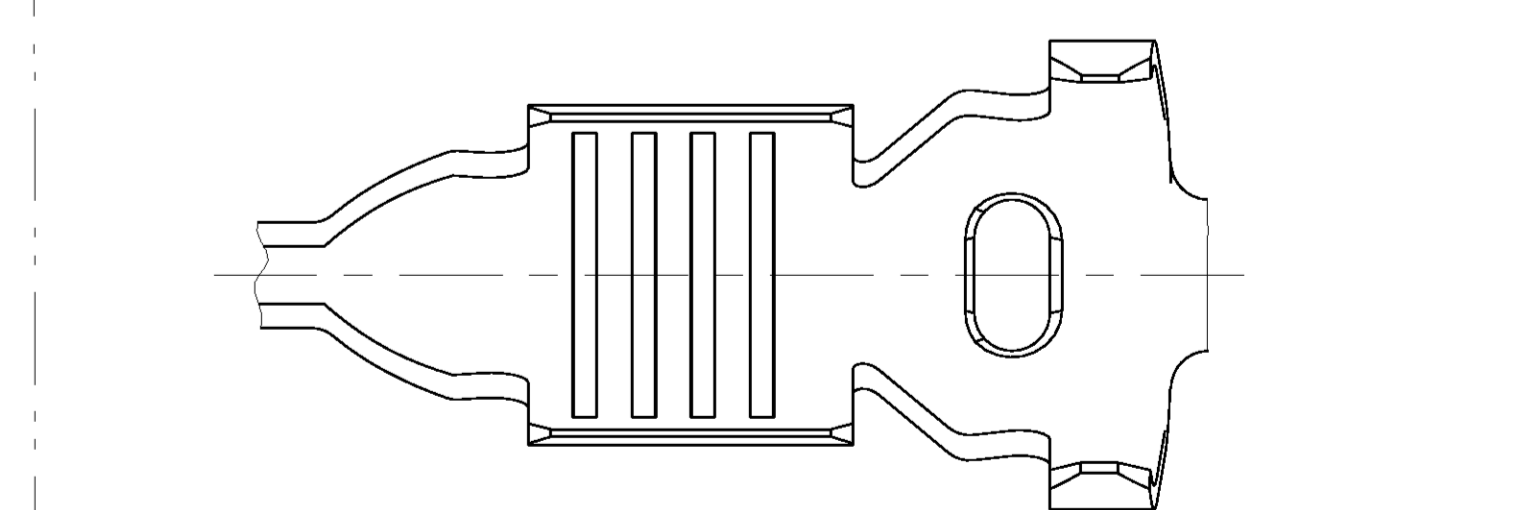
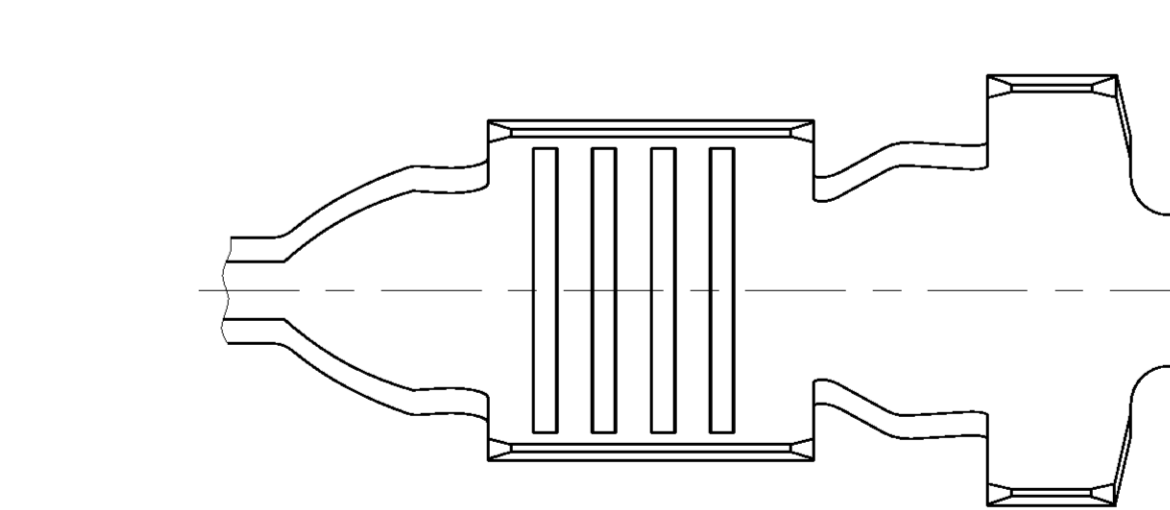
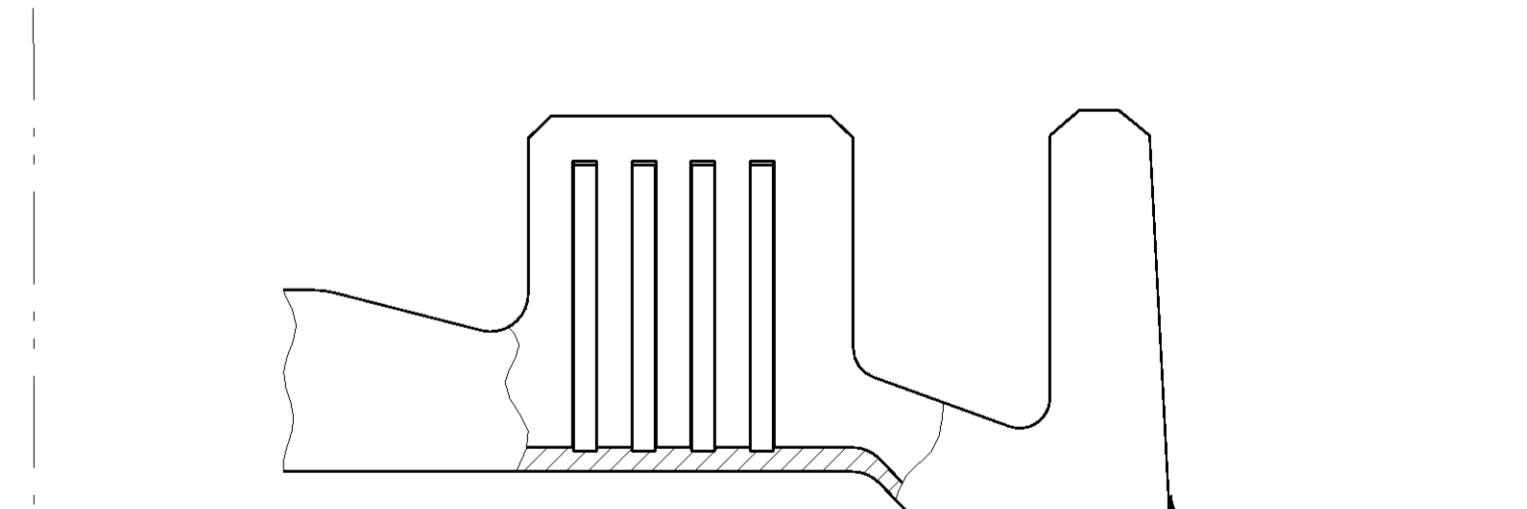
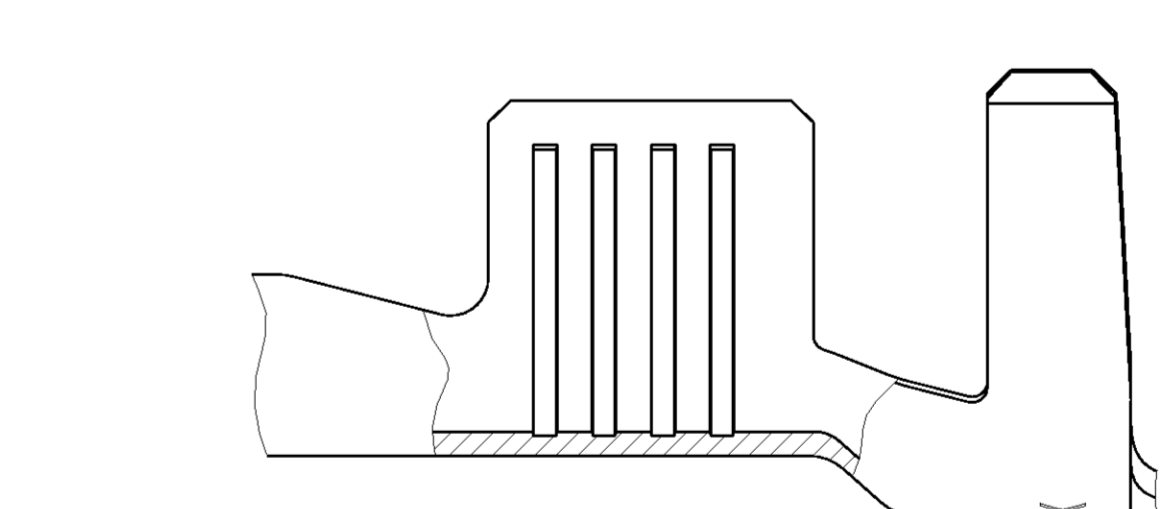
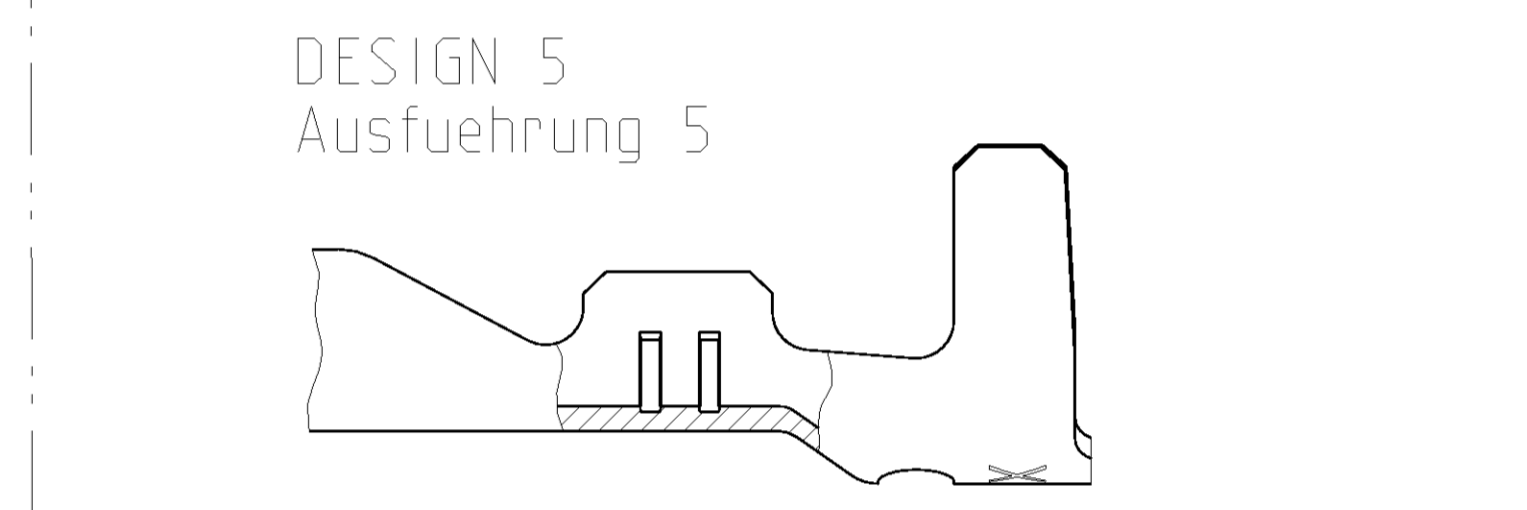
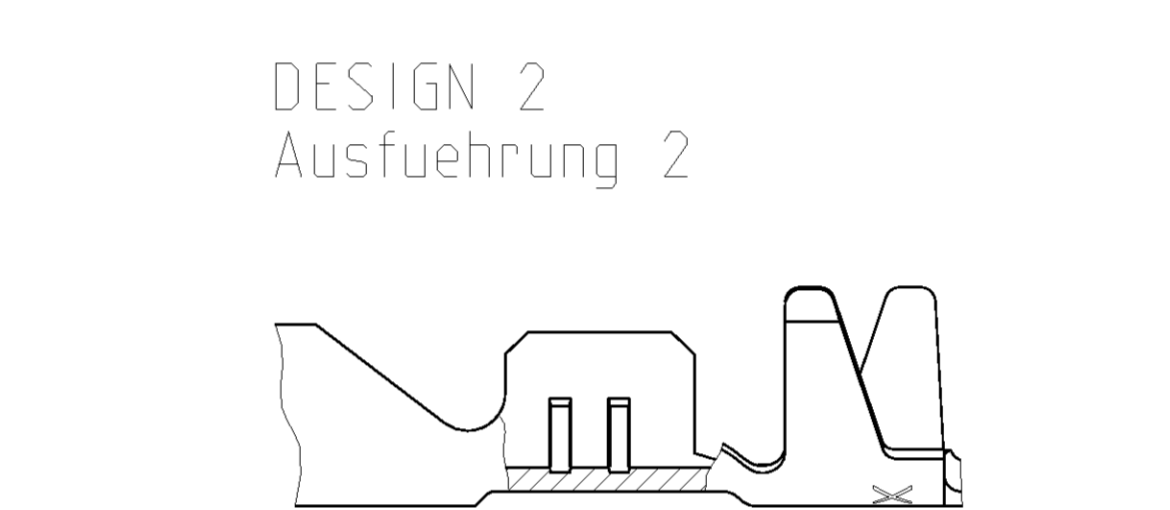
REVISIONS table with columns: NO., REV., DESCRIPTION, DATE, DWG., APPR.

NOTES: CONTACT AREA PRE SILVER MIN. 3µm, CANTILEVER SPRING PLAIN, CONTACT BODY NI-PLATING MIN. 0.5µm, CONTACT AREA PRE-GOLD MIN. 0.6µm, OVER NICKEL, CRIMP AREA PRE-TIN, CANTILEVER SPRING PLAIN, Kontaktkoerper vernickelt min. 0.5µm, Kontaktzone vorvergoldet min. 0.6µm ueber Nickel, Crimpzone vorverzinkt; Ueberfederer blank.

AWG 12 TXL 828905-1 DR / oder 282536-1, AWG 12 GXL 638865-1, ATTENTION! CONSTRUCTION OF THE CONTACT CAVITY IN THE AREA OF THE SINGLE WIRE SEAL IS Ø6.4 +0.1 -0.05, Achtung! Die Kammer ist im Bereich der Einzeldichtung auf Ø6.4 +0.1 -0.05 auszulegen, PUNCHED WITH VOLATILIZING STAMPING-OIL, Gestanz mit verfluechtigendem Stanzloel.



Main specification table with columns: ORDER-NO., DESIGN, MATERIAL, SURFACE, DGB, INSULATION, SEE / siehe SECTION, SEE / siehe SECTION, SEE / siehe WIRE CRIMP, SEE / siehe SECTION, SEE / siehe SECTION, APPLICATION TOOL, HAND TOOL, ORDER-NO., ORDER-NO.



Bottom table with columns: TE ORDER-NO., TE ORDER-NO., DESIGN, MATERIAL, SURFACE, DGB, INSULATION, STRIP FORM, WIRE CRIMP, LOOSE PIECE, APPLICATION TOOL, HAND TOOL, TE ORDER-NO., TE ORDER-NO.

Footer containing: THIS DRAWING IS A CONTROLLED DOCUMENT, DIMENSIONS, MATERIAL, FINISH, DATE, DRAWING NO., SCALE, SHEET, and STC logo.

