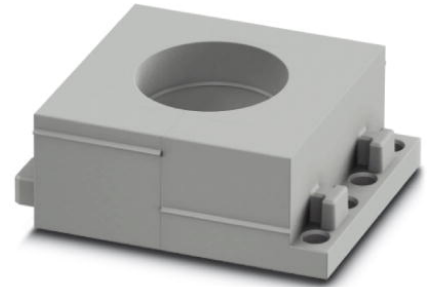


## CES-LTPG-GY-23


Order No.: 0801696



<http://catalog.phoenixcontact.net/phoenix/treeViewClick.do?UID=0801696>

Large, slotted cable sleeves suitable for cables with a diameter of 22 ... 23 mm, material: SEBS

### Commercial data

EAN	 4 046356 674997
sales group	B241
Pack	10 Pcs.
Customs tariff	85472000
Gross weight in pieces	0.02701 KG
Net weight per piece	0.02701 KG

### Product notes

WEEE/RoHS-compliant since:  
06/27/2011



<http://www.download.phoenixcontact.com>  
Please note that the data given here has been taken from the online catalog. For comprehensive information and data, please refer to the user documentation. The General Terms and Conditions of Use apply to Internet downloads.

### Product description

Slotted sleeves for accommodating pre-assembled cables and lines with a diameter of 22 ... 23 mm, can be used in CES sealing frames. When fitted, the sleeves also ensure strain relief according to DIN EN 50262.

## Technical data

### General data

Product description	Slotted sleeves for accommodating pre-assembled cables and lines with a diameter of 22 ... 23 mm, can be used in CES sealing frames. When fitted, the sleeves also ensure strain relief according to DIN EN 50262.
External cable diameter	22 mm ... 23 mm
Material	SEBS
Inflammability class according to UL 94	V0
Color	gray
Degree of protection	IP54
Ambient temperature (operation)	-40 °C ... 80 °C (static)

## Certificates / Approvals

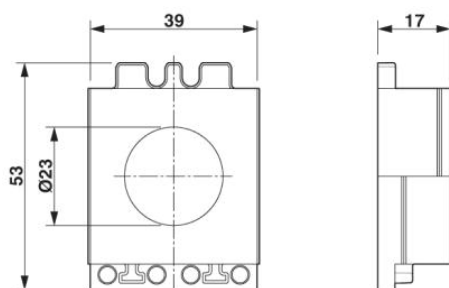
Certification

Certifications applied for:

Certification Ex:

## Drawings

Dimensioned drawing



Dimensional drawing

**Address**

PHOENIX CONTACT Deutschland GmbH  
Flachmarktstr. 8  
32825 Blomberg, Germany  
Phone +49 5235 3 12000  
Fax +49 5235 3 41200  
<http://www.phoenixcontact.de>



© 2012 Phoenix Contact  
Technical modifications reserved;