

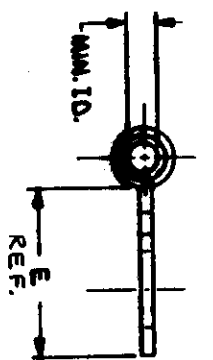
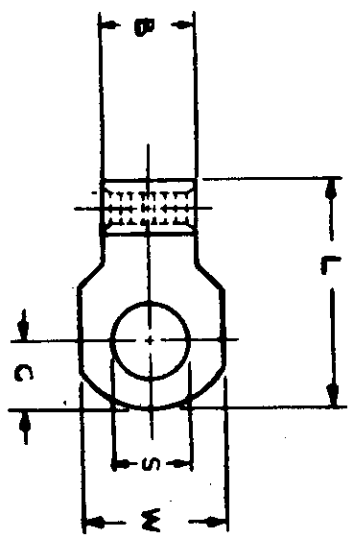
NOTES:

① MAT'L : COPPER
PLATING : ELECTRO-TIN (.0003 MIN.)

STUD SIZES : (+.005)

- 02 = .094
- 04 = .119
- 06 = .146
- 08 = .173
- 10 = .198
- 14 = .265
- 56 = .328
- 38 = .390

ALL DIMENSIONS = $\frac{\text{INCHES}}{M M}$



WIRE SIZE: 22-18 AWG.
25-1.5 MM²

FILE NO.	A - CD - 107 - 01	
REV	DESCRIPTION	DATE
A	"E" REF. WAS "E" MIN.	5-2-90

PART NUMBER	"W"	"C" MAX.	"L" MAX.	"B" MIN.	"E" REF.	"ID" MIN.	AVAILABLE "S" STUD SIZES	STOCK THK.	DIMENSIONAL TOLERANCES UNLESS OTHERWISE SPECIFIED	
									±	ANG.
A-142-	$\frac{.380}{9.65}$	$\frac{.187}{4.75}$	$\frac{.650}{16.51}$	$\frac{.245}{6.22}$	$\frac{.500}{12.70}$	$\frac{.057}{1.45}$	-06, -08, -10	$\frac{.032}{.81}$	±	±

TITLE: KRIMPTITE
FLAG RING TONGUE
TERMINAL



DWG. NO. **A** CUSTOMER'S DWG.

SCALE: **NES**
DRAWN BY: ENIF
CHKD. BY:
APPD. BY:

DATE: 2-3-87