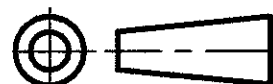


DO NOT SCALE

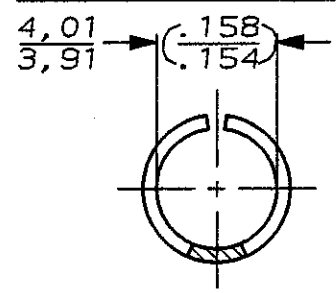
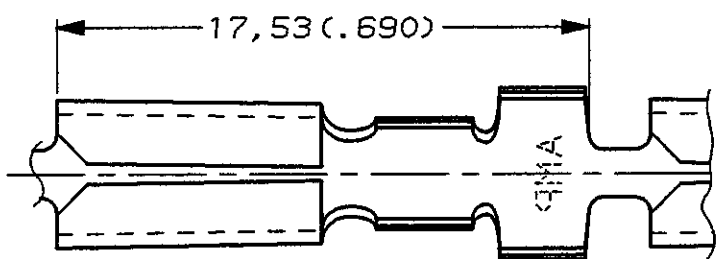
DIMENSIONS IN INCH

METRIC

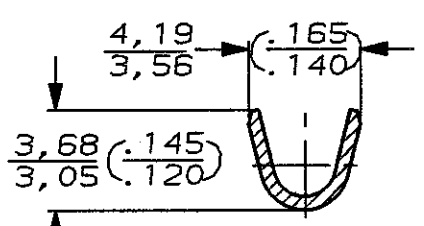
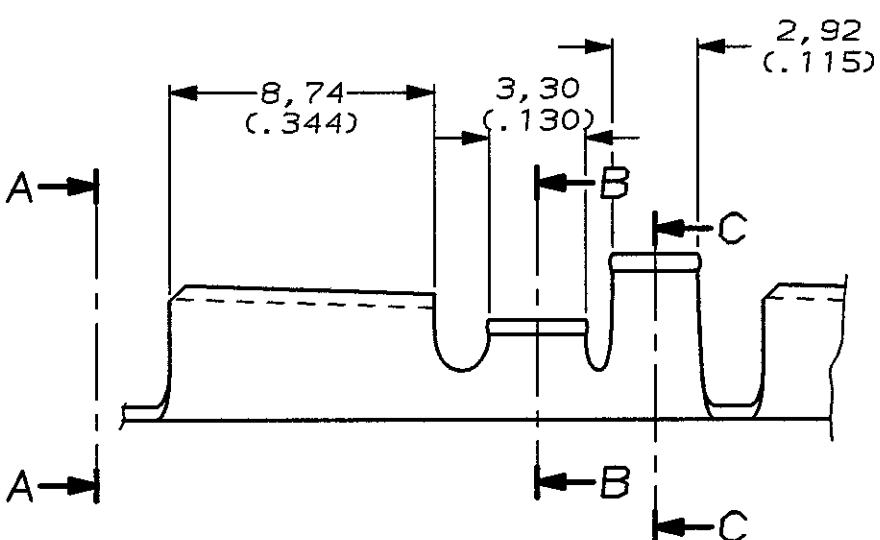
THIRD ANGLE
PROJECTION



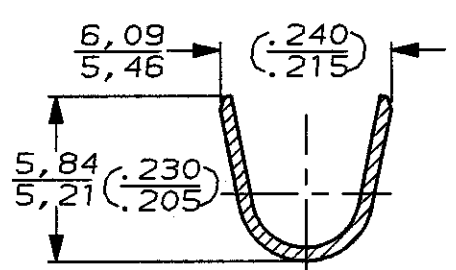
WIRE RANGE :
0,8-2,0mm² (18-14 AWG)
INSULATION RANGE :
3,30-4,45 (.130-.175)
DIA.



VIEW A-A



SECTION B-B



SECTION C-C

NOTES:

- 1 CONTINUOUS STRIP, ON REELS.
- 2 DIM'S IN BRACKETS ARE IN INCHES.
- 3 SPLICE-FREE.

TINPLATED	0,46 (.018) THK. BRASS	62734-4
SILVERPLATED	0,46 (.018) THK. BRASS	3 62734-3
SILVERPLATED	0,46 (.018) THK. BRASS	62734-2
NONE	0,46 (.018) THK. BRASS	62734-1
FINISH	MATERIAL	PARTNUMBER

-	-	-	-	-
-	-	-	-	-
-	-	-	-	-
-	-	-	-	-
-	-	-	-	-
D	EH-0359-96	M.V.A	A.B	14-03-96
C	H-10024	R.D.	R.D.	02-09-92
LTR.	REVISION RECORD	DR.	CHK.	DATE

CUSTOMER DRAWING FOR REFERENCE ONLY
WILL NOT BE UPDATED
© COPYRIGHT 19- BY AMP HOLLAND B.V.
ALL INTERNATIONAL RIGHTS RESERVED. AMP PRODUCTS MAY BE
COVERED BY U.S. AND FOREIGN AND/OR PATENTS PENDING.
THIS DRAWING IS UNPUBLISHED
RELEASED FOR PUBLICATION _____, 19____
AMP | AMP HOLLAND B.V.
's-Hertogenbosch,
The Netherlands.

NAME
.156 DIA. PIN RECEPTACLE

DR.:	R.DAAMEN	CHK.:	R.DLIKSTRA	APP.:	L.v.SOEEST	DWG.No.	REV.LTR.	SHEET	A4
DATE:	02-09-92	DATE:	M 01	DATE:	-	C-62734	D	1 OF 1	