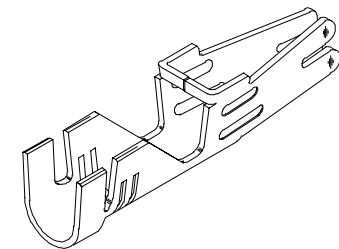
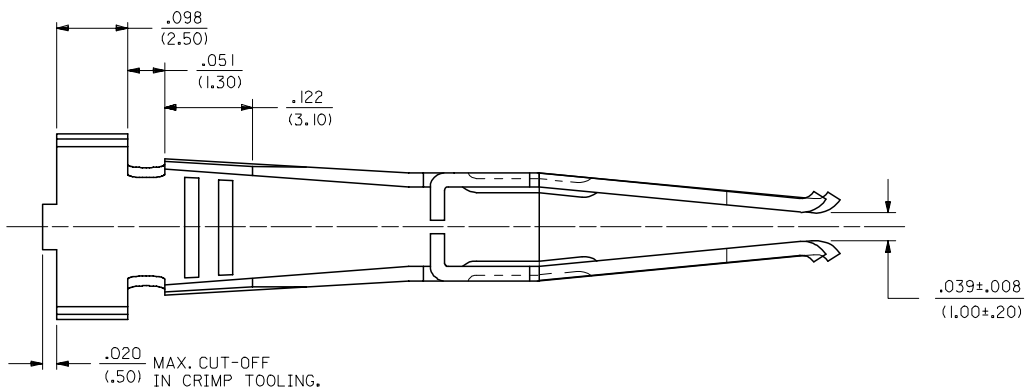
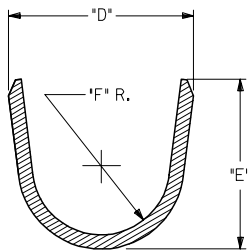
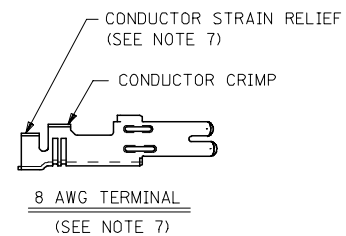
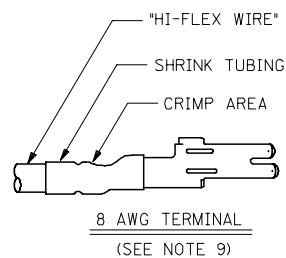
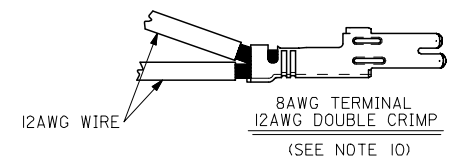
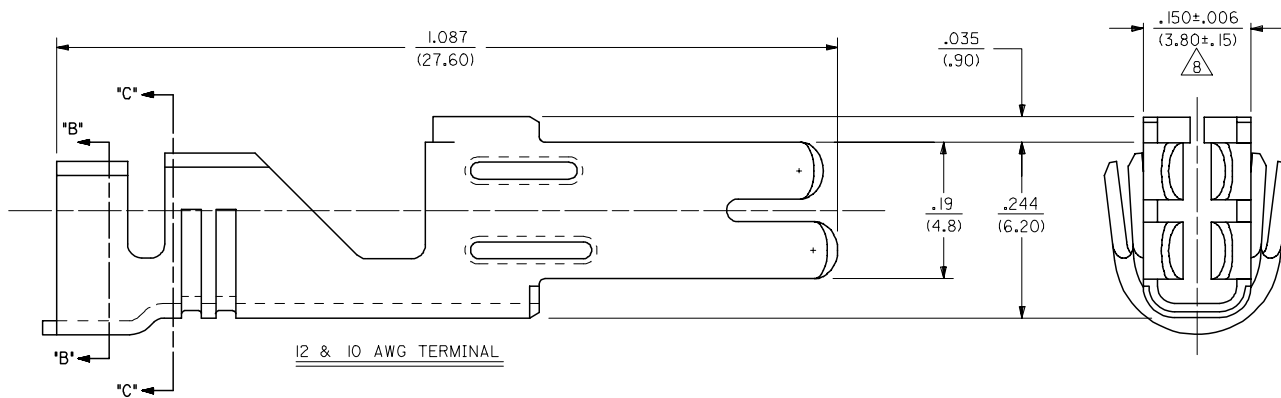


13 12 11 10 9 8 7 6 5 4 3 2 1

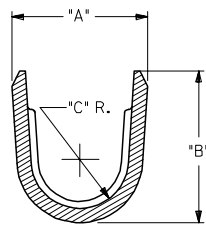
J
I
H
G
F
E
D
C
B
A



ISOMETRIC VIEW
(SCALE 4:1)



SECTION B-B



SECTION C-C
(BACKGROUND OMITTED)

REDRAWN IN ME10 EC NO: UCP2005-2769 DRAWN: JCOMERC 2005/06/17 CHKD: 2005/06/17 APPR: JCOMERC 2005/06/17 H1	QUALITY SYMBOLS ▽=0 ▽=0	GENERAL TOLERANCES (UNLESS SPECIFIED) <table border="1"> <thead> <tr> <th></th> <th>mm</th> <th>INCH</th> </tr> </thead> <tbody> <tr> <td>4 PLACES</td> <td>± .010</td> <td>± .0004</td> </tr> <tr> <td>3 PLACES</td> <td>± .015</td> <td>± .0006</td> </tr> <tr> <td>2 PLACES</td> <td>± 0.25</td> <td>± .010</td> </tr> <tr> <td>1 PLACE</td> <td>± 0.40</td> <td>± .016</td> </tr> <tr> <td colspan="3">ANGULAR ±1/2°</td> </tr> </tbody> </table>		mm	INCH	4 PLACES	± .010	± .0004	3 PLACES	± .015	± .0006	2 PLACES	± 0.25	± .010	1 PLACE	± 0.40	± .016	ANGULAR ±1/2°			DIMENSION STYLE IN/MM	SCALE 8:1	DESIGN UNITS METRIC	THIRD ANGLE PROJECTION
		mm	INCH																					
	4 PLACES	± .010	± .0004																					
	3 PLACES	± .015	± .0006																					
2 PLACES	± 0.25	± .010																						
1 PLACE	± 0.40	± .016																						
ANGULAR ±1/2°																								
DRAWN BY RJP	DATE 1/6/92	CHECKED BY RJP	DATE 1/6/92	TITLE FEMALE CRIMP TERMINAL, 12, 10 & 8AWG MINIFIT SR.																				
APPROVED BY RAS	DATE 1/6/92	MATERIAL NO. SEE CHART			DOCUMENT NO. SD-42815-*	SHEET NO. 1 OF 2																		
DRAFT WHERE APPLICABLE MUST REMAIN WITHIN DIMENSIONS							THIS DRAWING CONTAINS INFORMATION THAT IS PROPRIETARY TO MOLEX INCORPORATED AND SHOULD NOT BE USED WITHOUT WRITTEN PERMISSION																	

12 11 10 9 8 7 6 5 4 3 2 1

ITEM NUMBER	WIRE RANGE	DIM. A	DIM. B	DIM. C	DIM. D	DIM. E	DIM. F	MAX. INSULATION DIAMETER	PLATING
42815-0011	12 & 10 AWG	$.213 \pm .024$ (5.40 ± .60)	$.240 \pm .016$ (6.10 ± .40)	$.067$ R. (1.70)	$.232 \pm .024$ (5.90 ± .60)	$.260 \pm .016$ (6.60 ± .40)	$.087$ R. (2.20)	$.209$ DIA. (5.30)	OVERALL TIN
42815-0031	8 AWG	$.229 \pm .024$ (5.83 ± .60)	$.292 \pm .016$ (7.42 ± .40)	$.067$ R. (1.70)	$.236 \pm .024$ (6.00 ± .60)	$.216 \pm .016$ (5.50 ± .40)	$.087$ R. (2.20)	$.260$ DIA. (6.60)	
42815-0012	12 & 10 AWG	$.213 \pm .024$ (5.40 ± .60)	$.240 \pm .016$ (6.10 ± .40)	$.067$ R. (1.70)	$.232 \pm .024$ (5.90 ± .60)	$.260 \pm .016$ (6.60 ± .40)	$.087$ R. (2.20)	$.209$ DIA. (5.30)	SELECT GOLD
42815-0032	8 AWG	$.229 \pm .024$ (5.83 ± .60)	$.292 \pm .016$ (7.42 ± .40)	$.067$ R. (1.70)	$.236 \pm .024$ (6.00 ± .60)	$.216 \pm .016$ (5.50 ± .40)	$.087$ R. (2.20)	$.260$ DIA. (6.60)	

NOTES:

1) MATERIAL: COPPER ALLOY 151, .020/(.50) THICK.

2) PLATING:

1 = .000100/(.00254) MIN. *TIN OVER
.000050/(.00127) MIN. NICKEL.

2 = .000030/(.00076) MIN. SELECT GOLD IN CONTACT AREA.
.000100/(.00254) MIN. SELECT *TIN ON SOLDER TAILS
OVER .000050/(.00127) MIN. NICKEL.

* THE PRIMARY SHIPPING CARTON WILL BE LABELED
COMPLIANT TO RoHS DIRECTIVE 2002/95/EC
AND ELV ANNEX II OF DIRECTIVE 2000/53/EC.
CARTONS WITHOUT THIS LABEL MAY CONTAIN
PRODUCT WITH TIN-LEAD.

3) PRODUCT SPEC.: PS-42815-001

4) PART IS DESIGNED IN METRIC.

5) TERMINALS FOR USE WITH STRANDED WIRE ONLY.

6) ITEM NUMBERS PRECEDED BY AN 'X' IN THE CHART ARE NOT AVAILABLE.

7) THE 8 AWG TERMINAL HAS NO INSULATION CRIMP. THE SECONDARY CRIMP SECTION
ACTS AS A STRAIN RELIEF ON THE BARE CONDUCTOR ONLY. SEE MOLEX CRIMP
SPECIFICATION FOR DETAILS.

8) AFTER CRIMPING, THIS DIMENSION IS .140/(3.55) MINIMUM.

9) WHEN USING THE 8 AWG TERMINAL WITH "SUPERFLEX WIRE",
MOLEX STRONGLY RECOMMENDS THAT THE APPROPRIATELY
RATED HEAT SHRINK INSULATION BE APPLIED OVER THE WIRE
INSULATION AND CRIMP AREA, AS SHOWN, TO MINIMIZE WIRE
INSULATION CREEPAGE OUTSIDE OF HOUSING.

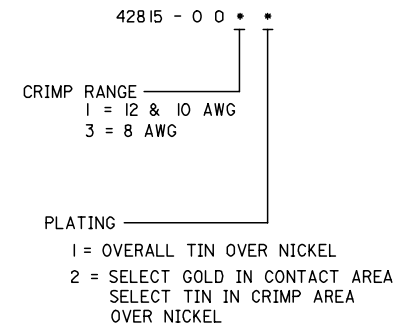
10) THE 8AWG TERMINAL WILL ALSO ACCOMODATE 2 I2AWG WIRES
SEE CRIMP SPEC FOR DETAILS.

11) CRIMP SPECS.:

638210000 FOR 10AWG & 12AWG

638300000 FOR 8AWG, 8AWG HI-FLEX & DOUBLE 12AWG

LEGEND:



SEE SHEET 1 EC NO: UCP2005-2769 DRAWN: JCOMERC CHKD: 2005/06/17 APPR: JCOMERC 2005/06/17	QUALITY SYMBOLS ▽=0 ▽=0	GENERAL TOLERANCES (UNLESS SPECIFIED)		DIMENSION STYLE IN/MM		SCALE 8:1	DESIGN UNITS METRIC	THIRD ANGLE PROJECTION	
		mm	INCH	DRAWN BY RJF	DATE 1/6/92	TITLE FEMALE CRIMP TERMINAL 10-12 AWG & 8 AWG MINIFIT SR. SERIES			
		4 PLACES ± --- ± ---	3 PLACES ± --- ± .010	CHECKED BY RJF	DATE 1/6/92				
2 PLACES ± 0.25 ± .016		1 PLACE ± 0.40 ± ---		APPROVED BY RAS	DATE 1/6/92	molex MOLEX INCORPORATED			
ANGULAR ±1/2°		DRAFT WHERE APPLICABLE MUST REMAIN WITHIN DIMENSIONS		SEE CHART		MATERIAL NO. SD-42815-*	DOCUMENT NO.	SHEET NO. 2 OF 2	
THIS DRAWING CONTAINS INFORMATION THAT IS PROPRIETARY TO MOLEX INCORPORATED AND SHOULD NOT BE USED WITHOUT WRITTEN PERMISSION									