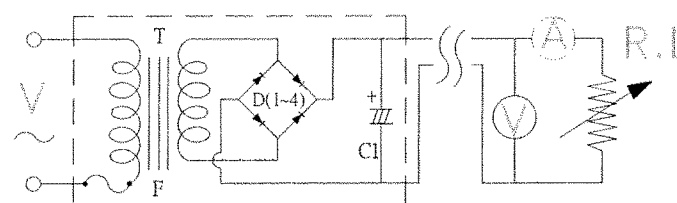
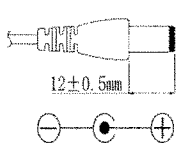
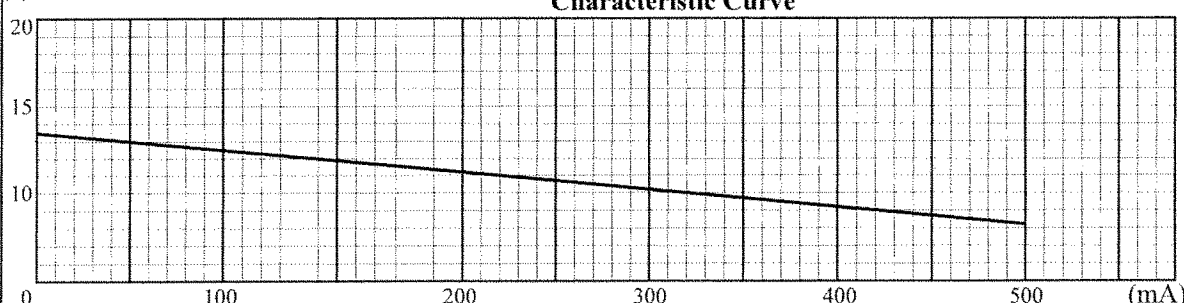


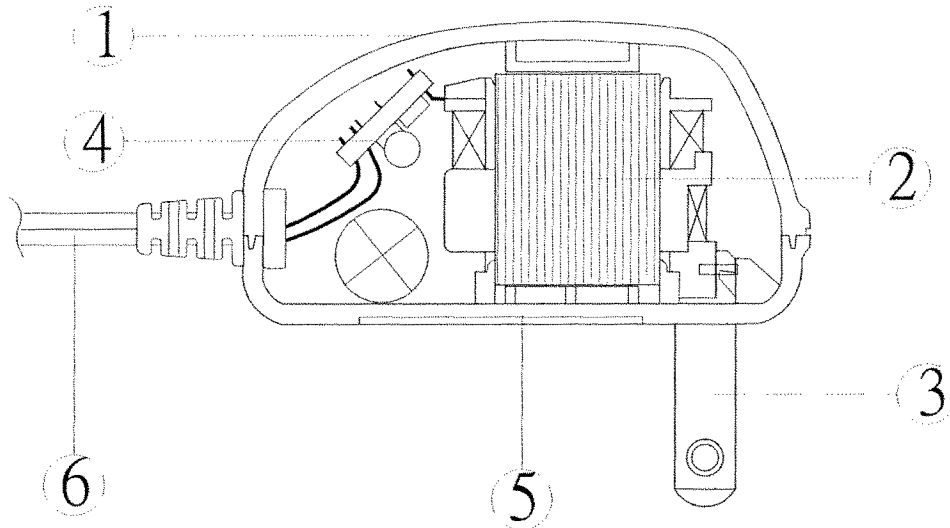
### TEST DATA

ITEM	SPEC	SAMPLE									
		1	2	3	4	5	6	7	8	9	10
Primary Exciting Current Input 120VAC, 60 Hz	60 mA max	36	36	37							
Primary Load Current Input 120VAC, 60 Hz	95 mA max	80	80	80							
Secondary No Load DC Voltage	13.5V ±5%	13.37	13.3	13.7							
Secondary DC Voltage Load 500 mA	9V ±5%	9.1	9.09	9.12							
Secondary Voltage Load mA	V ± %										
Secondary Voltage Load mA	V ± %										
Secondary Voltage Load mA	V ± %										
Secondary Voltage Load mA	V ± %										
Ripple Voltage Load 500 mA (PK-PK)	2.5V max	1.8	1.8	1.8							
Hi-Pot Test 3 mA for 3Sec.	Pri. to Sec.	2K VAC	OK	OK	OK						
	Pri. to Core	2K VAC	OK	OK	OK						
	Sec. to Core	1.5K VAC	OK	OK	OK						
Temperature Rise: 70°C MAX measured By Resistance Method (Primary Winding)											
Core Film: SPLIT Core: EI-35											
Testing Circuit: <div style="display: flex; justify-content: space-around; align-items: flex-start;"> <div style="text-align: center;"> <p>1000uF/16V</p>  </div> <div style="text-align: center;"> <p>Output Plug Drawing: PLUG: 5.5X2.1mm</p>  </div> </div>											
Output conductor length:		6 ft min (AWG#22)									
Input conductor length:		ft min (AWG#)									
(V) <b>Characteristic Curve</b>											
											

## DC Adaptor Specifications

---

### Internal Construction Drawing and Parts List (Unit: Set or EA)

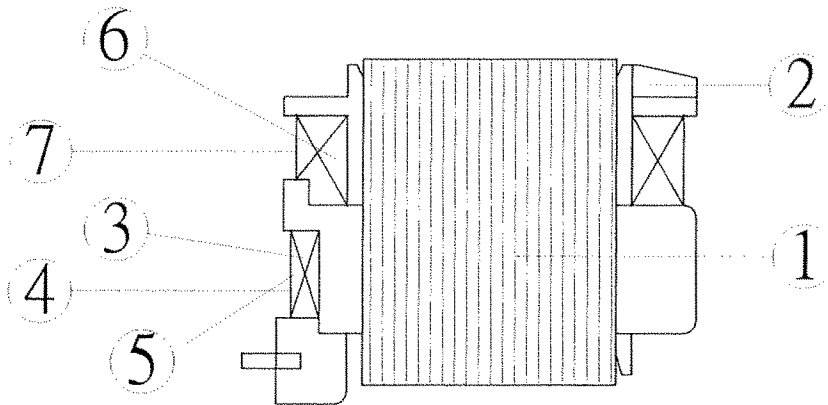


Part Name	Specification	Q'ty
1. Enclosure	Noryl SE1 94V-1 105°C	
	Noryl SE-100 94V-1 85°C	
	Noryl PX1700 94V-1 80°C	
	940(f1) 94V-0 130°C	
2. Transformer	EI-35	1
3. Blade	Ni plated brass	2
<b>4. Print Wiring Board Assembly</b>		
Print Wiring Board	04V0 94V-0 130°C	1
	11 94V-0 105°C	
	13 94V-0 130°C	
	BF-3 94V-0 130°C	
Diode	1A 400V IN4004	4
Capacitor	1000uf 16V 85°C	1
5. Name Plate	Polyester Film	1
6. Output Cord	AWG#22 6FT min	1



## DC Adaptor Specifications

### Construction Drawing and Details of Transformer

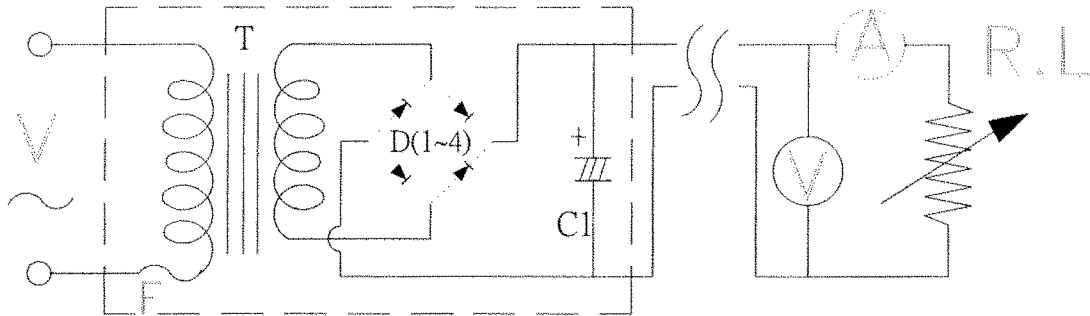


Part Name	Material & Type	Spec or Q'ty
1. Core	Silicon Steel	0.5mm
2. Bobbin	Polybutylene Terephthalate	0.71mm
	1403G6	
	PETP(QMFZ2)	
	FR-530, FR530L	
3. Primary Winding	Polyurethane Enameled	mm turn ohm
	Copper wire	
4. Primary Outer Winding	Mylar Tape	0.025mmx2T
5. Thermal Fuse)	M30 2A 125°C 250V AC	1PC
6. Secondary Winding	Polyurethane Enameled	mm turn ohm
	Copper Wire	
7. Secondary Outer Winding	Mylar Tape	0.025mmx2T

## DC Adaptor Specifications

---

### Circuit Diagram



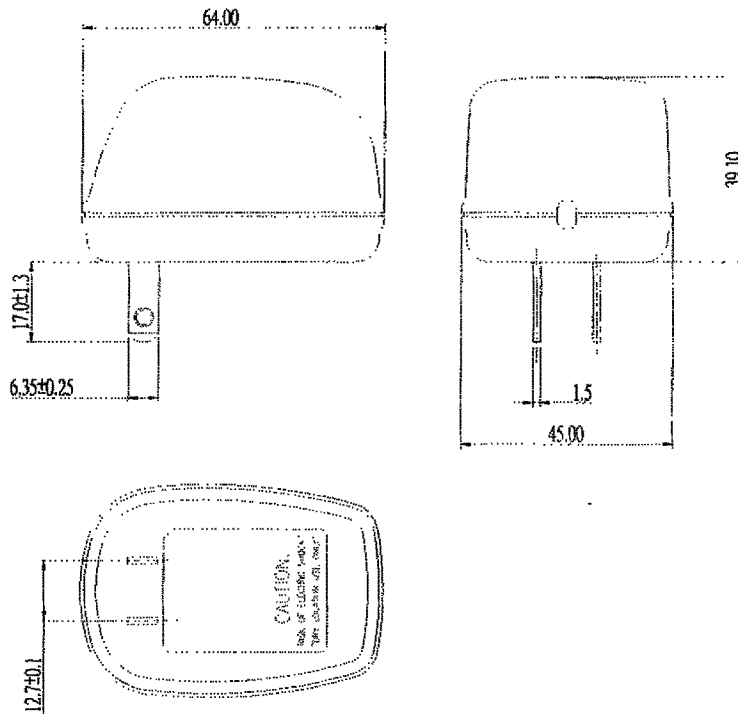
Symbol	Part Name	Note
T	Transformer	EI-35
D(1-4)	Diode	1A 400V IN4004
C	Capacitor	1000uF 16V 85°C
F	Thermal	125°C 2A 250V

---

## DC Adaptor Specifications

---

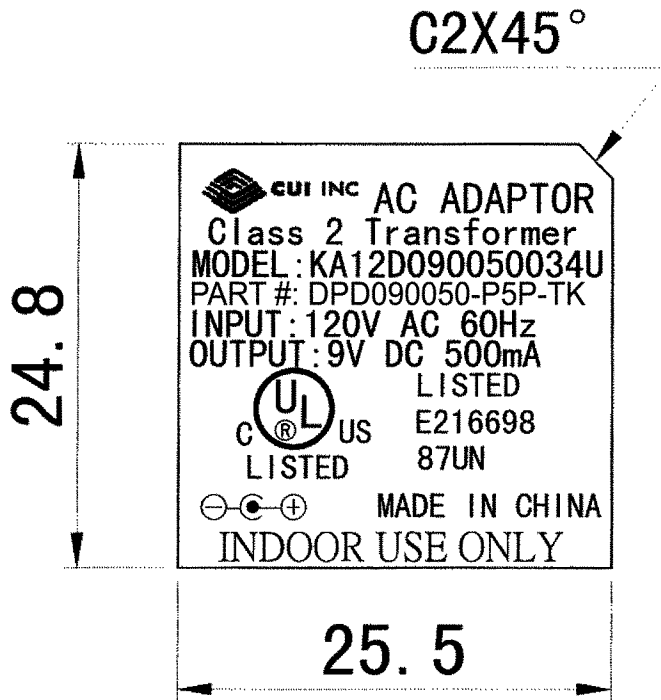
### Appearance Drawing (Unit:mm)



## DC Adaptor Specifications

---

### Dimension of Nameplate (Unit:mm)



Material: Polyester Film

T: 0.25mm