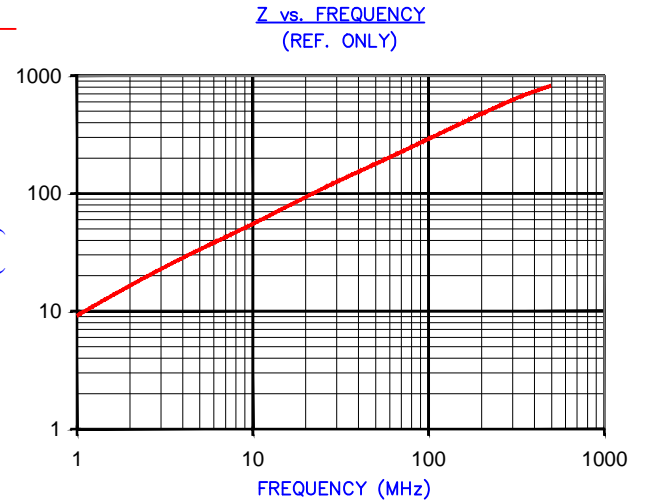


DETAIL "A"
CHAMFER
SCALE=4.5:1



**UNCONTROLLED
DOCUMENT**

| IMPEDANCE (Z) | | | |
|-----------------|--------|---------|---------|
| Frequency | 25 MHz | 100 MHz | 300 MHz |
| Nominal (REF) | 114 Ω | 298 Ω | 588 Ω |
| Minimum | - Ω | 238 Ω | - Ω |



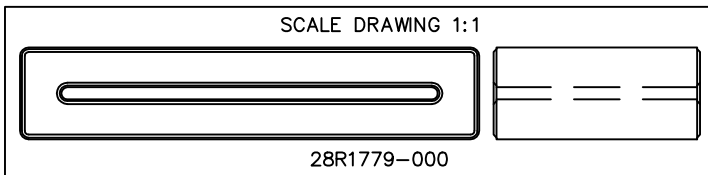
FERRITE CORE DIMENSIONS (SPEC): mm [in]

| | | | |
|---|---------------|---|------------------------------|
| A | 63.50 [2.500] | ± | 1.27 [.050] |
| B | 52.07 [2.050] | ± | 1.02 [.040] |
| C | 28.58 [1.125] | ± | 0.64 [.025] |
| D | 12.70 [.500] | ± | +0.89 [.035] -0.51 [.020] |
| E | 1.68 [.066] | ± | 0.51 [.020] |

WEIGHT/1000 101.20 kgs [223.10 Lbs]

NOTES: UNLESS OTHERWISE SPECIFIED

1. COSMETIC SPECIFICATION REFER TO WI-QA-038.



| DIMENSIONS ARE IN mm[INCHES]. | | | | This print is the property of Laird Tech. and is loaned in confidence subject to return upon request and with the understanding that no copies shall be made without the written consent of Laird Tech. All rights to design or invention are reserved. | | Laird | |
|-------------------------------|---|----------|-----|---|-------------------|-----------------------------|-----------------|
| K | UPDATE COMPANY LOGO | 01/02/13 | QIU | PROJECT/PART NUMBER: 28R1779-000 | | | REV K |
| J | UPDATE MIN Z SPECS & COMPANY LOGO | 07/27/07 | TMB | DATE: 08/04/92 | SCALE: 1.5 : 1 | MATERIAL: FERRITE | |
| H | UPDATE Z SPECS & ADD TEST REF# | 08/19/05 | TMB | CAD # 28R1779-000-K | TOOL # R1779 | | |
| G | CHANGE PRINT FORMAT CHANGE Z SPECS REMOVE NOTE 1 | 05/19/03 | TMB | | | | |
| F | ADD ZRX CURVE TO PRINT REVISE PART LAYOUT FORMAT REVISE ELECTRICAL TESTING FORMAT, NOTES, AND WEIGHT/1000 kgs [Lbs] | 09/10/02 | TMB | | | | |
| REV | DESCRIPTION | DATE | INT | | | | |