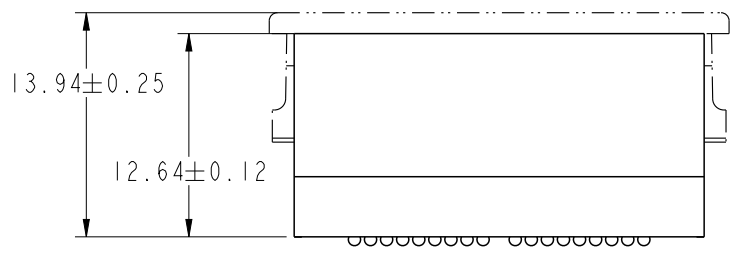
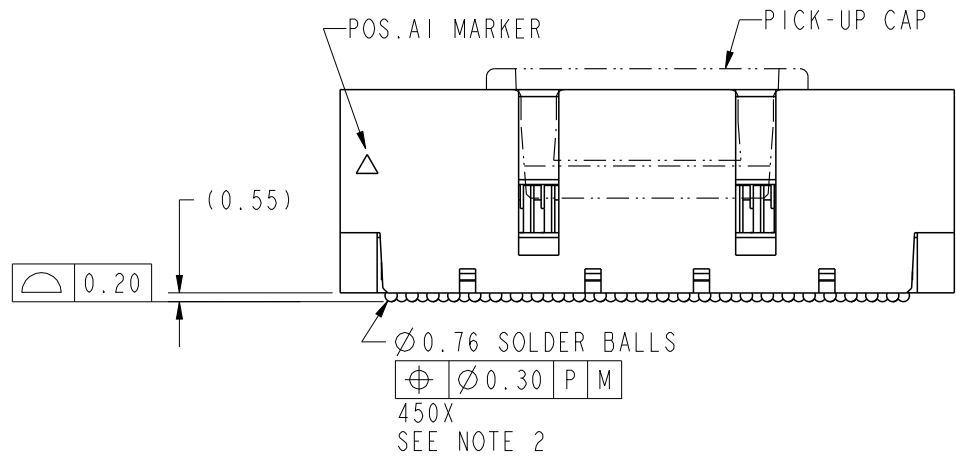
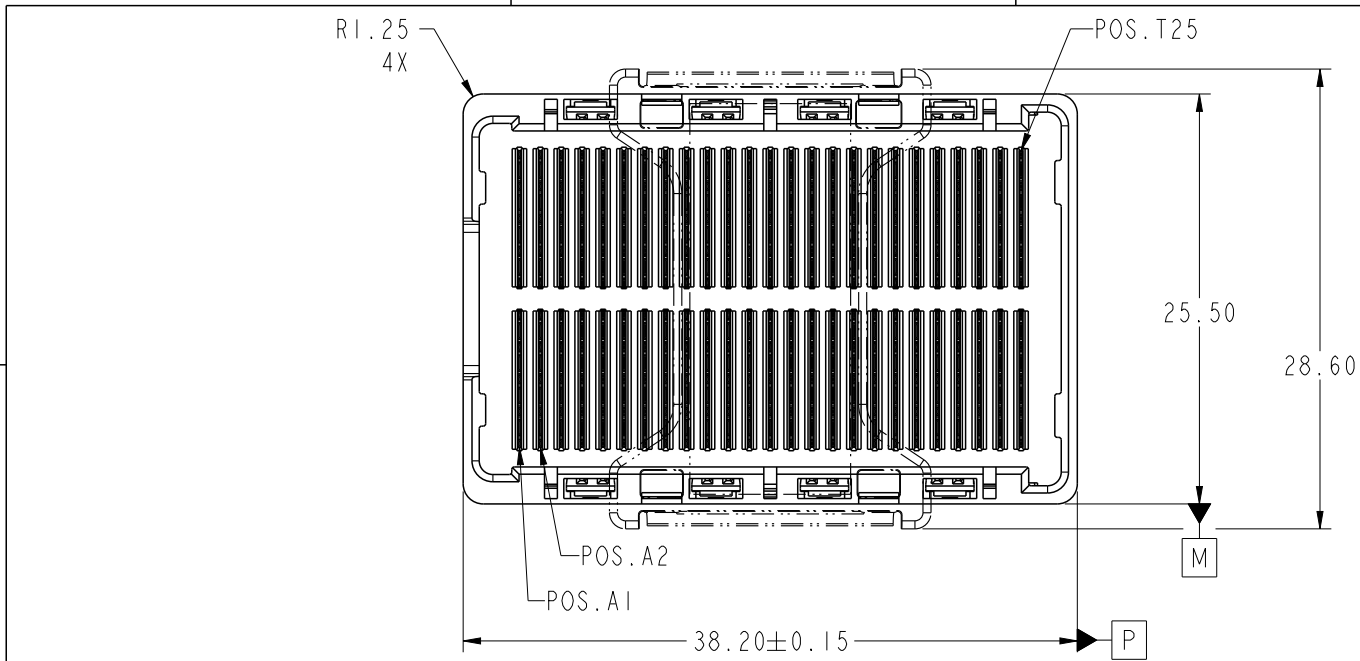


rev	ecn no	dr	date
A	V05-0321	TAB	04/08/05
B	V05-1009	LP	11/7/05
C	V06-0239	LP	3/27/06
D	V06-0558	LP	2006/06/21
E	V07-0440	LP	2007-07-09
F	V09-0071	PK	2009-02-24



spec ref	-	dr	Bill Lin	2010/02/02	projection 	mm 	size	A4	scale	1:1
tolerance std	ASME Y14.5	eng	Nickor Zuo	2011/06/13			ecn no	ELX-DG-003943-1		
TOLERANCES UNLESS OTHERWISE SPECIFIED		chr	Alex Cao	2011/06/24			product family	GIG-Array		rel level
surface	✓	appr	Pei-Ming Zheng	2011/06/27	GIG-Array		rel level	Released		
	linear	0.X	±0.30		GIG-Array		13mm PLUG ASSY. 200 SIG. POS.	10055142	rev	G
		0.XX	±0.10							
		0.XXX	±0.05							
	angular	0°	±2°	www.fci.com	cat. no.	Product - Customer Drw		sheet 1 of 5		

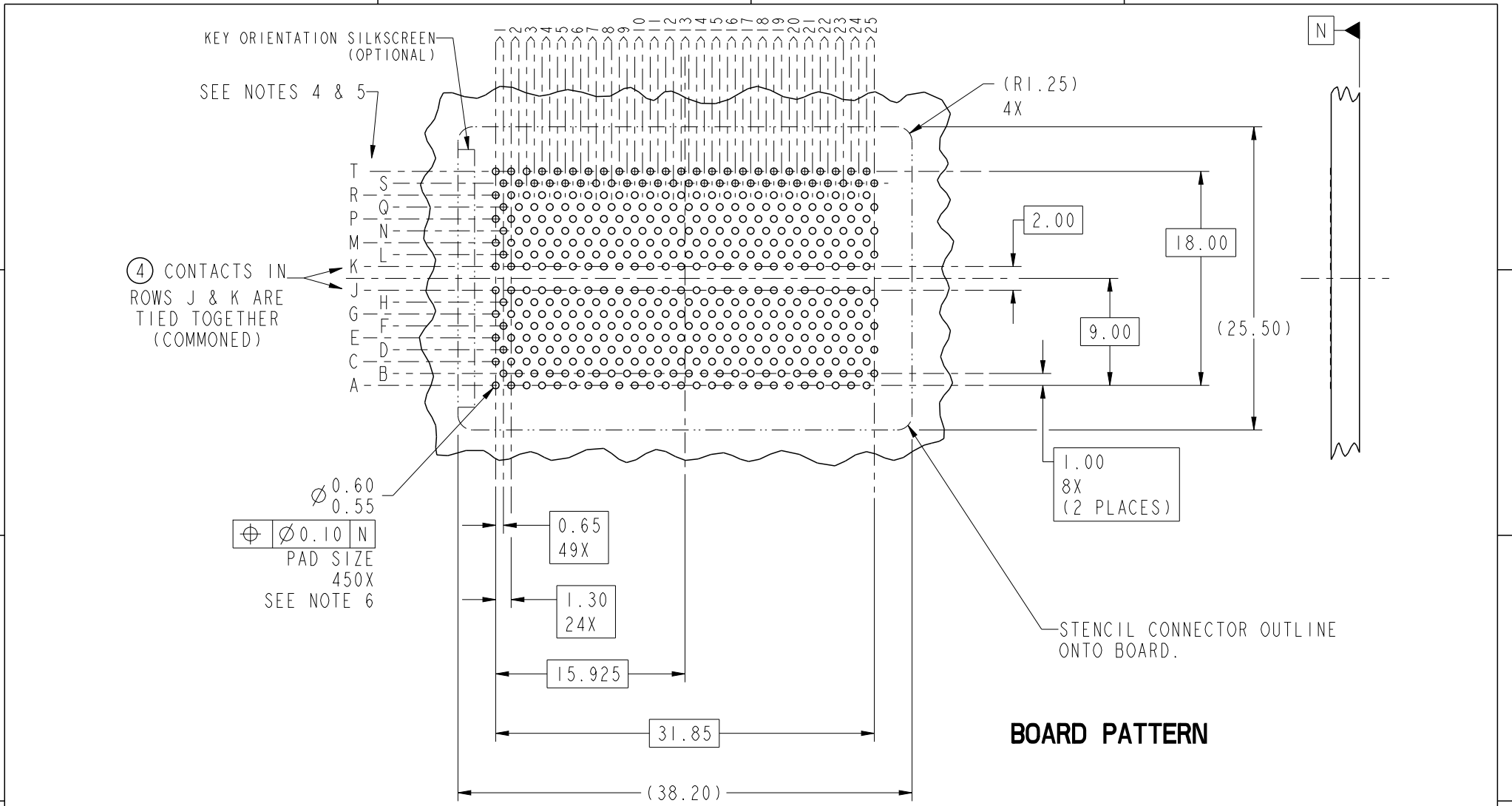


Copyright FCI.

ProjE File - REV C - 2009-06-09



Copyright FCI.



BOARD PATTERN

spec ref	-	dr	Bill Lin	2010/02/02	projection	mm	size	A4	scale	1:1												
tolerance std	ASME Y14.5	eng	Nickor Zuo	2011/06/13			ecn no		ELX-DG-003943-1													
TOLERANCES UNLESS OTHERWISE SPECIFIED		chr	Alex Cao	2011/06/24			rel level		Released													
surface	<table border="1"> <tr><td>linear</td><td>0.X</td><td>±0.30</td></tr> <tr><td></td><td>0.XX</td><td>±0.10</td></tr> <tr><td></td><td>0.XXX</td><td>±0.05</td></tr> <tr><td>angular</td><td>0°</td><td>±2°</td></tr> </table>	linear	0.X	±0.30		0.XX	±0.10		0.XXX	±0.05	angular	0°	±2°	appr	Pei-Ming Zheng	2011/06/27	product family		GIG-Array		rev	G
linear	0.X	±0.30																				
	0.XX	±0.10																				
	0.XXX	±0.05																				
angular	0°	±2°																				
		www.fci.com			title GIG-Array 13mm PLUG ASSY. 200 SIG. POS.		dwg no 10055142		sheet 2 of 5													
cat. no.					Product - Customer Drw			sheet 2 of 5														

PrdE File - REV C - 2009-06-09

1

2

3

4

A

B

C

D

A

B

C

D

D1
SIGNAL/GROUND

C1
GROUND

B1
SIGNAL/GROUND

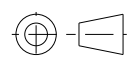

A1
GROUND

A2
GROUND

A3
GROUND

B2-B3
DIFFERENTIAL PAIR
TYPICAL

PLUG INTERFACE DESCRIPTION

spec ref		-		dr	Bill Lin	2010/02/02	projection 	mm ←→	size	A4	scale	1:1		
tolerance std	TOLERANCES UNLESS OTHERWISE SPECIFIED			eng	Nickor Zuo	2011/06/13			ecn no	ELX-DG-003943-1				
ASME Y14.5				chr	Alex Cao	2011/06/24		rel level		Released				
-				appr	Pei-Ming Zheng	2011/06/27			product family		GIG-Array			
surface	✓	linear	0.X	±0.30		title GIG-Array 13mm PLUG ASSY. 200 SIG. POS.	dwg no 10055142	rev G	www.fci.com		cat. no.	Product - Customer Drw	sheet 3 of 5	
			0.XX	±0.10										
			0.XXX	±0.05										
-		angular	0°	±2°										

PreE File - REV C - 2009-06-09

2

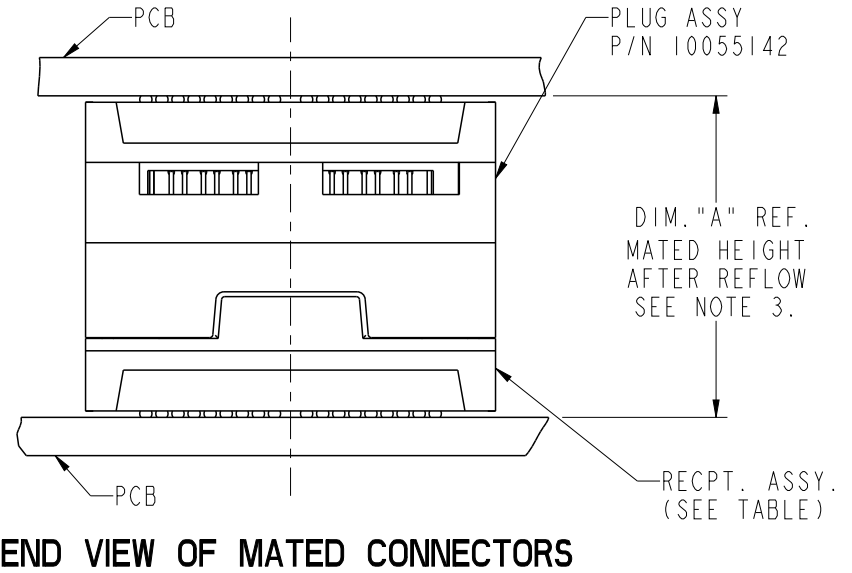
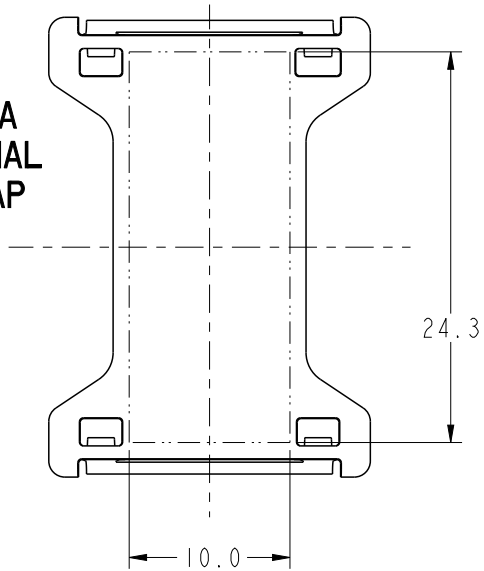
3

4



Copyright FCI.

FLAT AREA
FOR OPTIONAL
PICK-UP CAP



END VIEW OF MATED CONNECTORS

DIM. "A"	RECPT. ASSY. P/N
28	55741
18	55740



Copyright FCI.

spec ref		-		dr	Bill Lin	2010/02/02	projection 	mm 	size	A4	scale	1:1
tolerance std	ASME Y14.5	TOLERANCES UNLESS OTHERWISE SPECIFIED		eng	Nickor Zuo	2011/06/13			ecn no	ELX-DG-003943-1		
				chr	Alex Cao	2011/06/24				rel level	Released	
surface	✓	linear	0.X	±0.30	 www.fci.com	title GIG-Array 13mm PLUG ASSY. 200 SIG. POS.	dwg no 10055142	rev G				
		0.XX	±0.10	cat. no.					Product - Customer Drw	sheet 4 of 5		
		0.XXX	±0.05									
		angular	0°	±2°								

PRODUCT NUMBER	SOLDER BALL COMPOSITION	CONTACT PLATING PERFORMANCE LEVEL
10055142-001	STANDARD (EUTECTIC)	PERFORMANCE-BASED PLATING, QUALIFIED TO MEET THE REQUIREMENTS OF FCI PRODUCT SPECIFICATION GS-12-192, INCLUDING TELCORDIA CENTRAL OFFICE
10055142-001LF	LEADFREE	
10055142-201	STANDARD (EUTECTIC)	Au over Ni
10055142-201LF	LEADFREE	

NOTES:

- ① MAT'L:
HOUSING: LCP
CONTACT: COPPER ALLOY
PLATING (CONTACT): Au OVER Ni.
UL RATING: 94 V-0
SOLDER BALL: (SEE TABLE) EUTECTIC
SnPb OR LEADFREE 95.5 Sn/4Ag/0.5Cu
- ② SOLDER BALLS WILL NOT BE PERFECT SPHERICAL SHAPE DUE TO REFLOW ATTACHMENT.
- ③ MATED HEIGHT EFFECTED BY CUSTOMERS' PCB PAD SIZE, PLATING, SOLDER REFLOW PROFILE & SOLDER PASTE.
- ④ CONTACTS IN ROWS A,C,E,G,J,K,M,P,R AND T ARE SINGLE BEAM CONTACTS, TYPICALLY USED AS GROUND PINS. (NOTE: CONTACTS IN ROWS J & K ARE TIED TOGETHER [COMMONED])
- ⑤ CONTACTS IN ROWS B,D,F,H,L,N,Q AND S ARE DUAL BEAM CONTACTS, TYPICALLY USED AS SIGNAL PINS.
- ⑥ SPECIFIED POSITIONAL TOLERANCE DEFINES PAD TO PAD LOCATION WITHIN LAND PATTERN. POSITIONAL TOLERANCE OF LAND PATTERN TO FUDICIAL MARKS OR PCB DATUMS SHALL BE DEFINED BY CUSTOMER. FOR RECOMMENDED PRODUCT APPLICATION AND PCB DESIGN DETAILS, SEE DOC. NO. GS-20-016.
- ⑦ FOR PROPER APPLICATION FOLLOW FCI APPLICATION SPECIFICATION GS-20-033 LEADFREE SOLDER BALLS WILL NOT SOLDER PROPERLY IN A LEADED SOLDER PROCESS DUE TO A HIGHER REFLOW TEMPERATURE, LEAD FREE PRODUCT IS THEREFORE NOT BACKWARDS COMPATIBLE WITH LEADED OR SOME SOLDERING APPLICATIONS, REFERENCE FCI APPLICATION SPECIFICATION.
- ⑧ THIS PRODUCT MEETS THE EUROPEAN UNION DIRECTIVES AND OTHER COUNTRY REGULATIONS AS DESCRIBED IN GS-22-008 PRODUCT MEETING THIS DIRECTIVE IS IDENTIFIED IN THE LOT CODE NUMBER MARKED ON EACH PART BY HAVING AN "X" IN THE SEVENTH CHARACTER POSITION.



spec ref	-	dr	Bill Lin	2010/02/02	projection		size	A4	scale	1:1		
tolerance std	TOLERANCES UNLESS OTHERWISE SPECIFIED	eng	Nickor Zuo	2011/06/13		mm	ecn no	ELX-DG-003943-1				
ASME Y14.5		chr	Alex Cao	2011/06/24				product family	GIG-Array	rel level	Released	
-		appr	Pei-Ming Zheng	2011/06/27	www.fci.com	title	GIG-Array				13mm PLUG ASSY. 200 SIG. POS.	dwg no
surface		linear	0.X	±0.30				cat. no.	Product - Customer Drw	sheet 5 of 5		
-	angular	0°	±2°									