

5

4

3

2

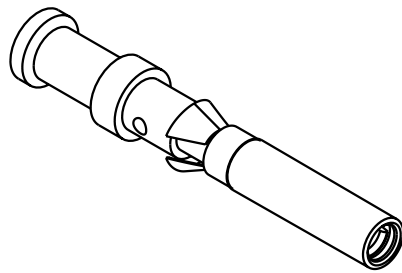
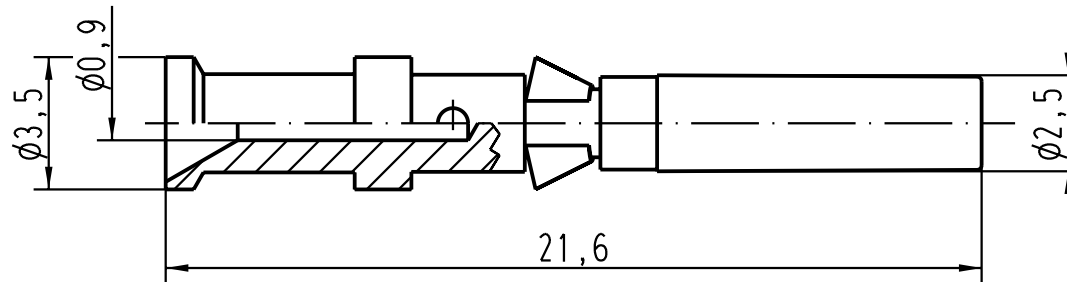
1

D



C

B

A



Leiterquerschnitt/ wire gauge: 0,14-0,37mm²/ AWG 26-22

		All Dimensions in mm Original Size DIN A 4		Techn. Character.		Nicht tolerierte Masse/ Free size tolerances		
						Massstab/ Scale 5:1	R15-Kontaktbuchse Crimpkontakt (Fe) vergoldet/ crimp contact (Fe) gold plated	
				Detail.	Dat. 24.09.03			Loe.
				Insp.				KR
				Stand.				
410702				HARTING Electric GmbH & Co. KG D-32339 Espelkamp			TB 09 15 000 6271	
Mod.		Dat.		Name				Blatt/ page
							Sub.	