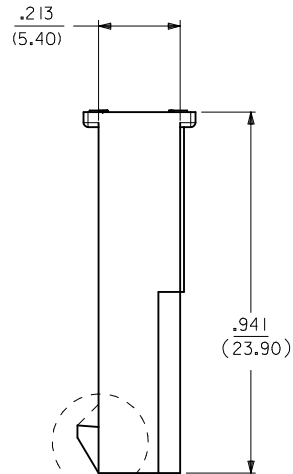
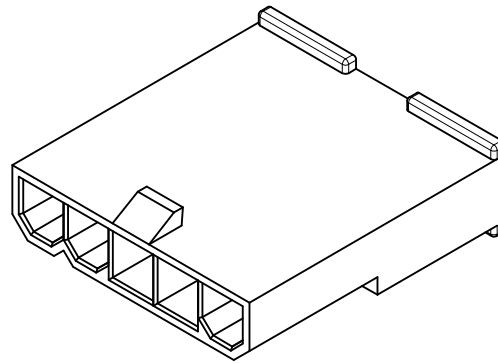


5 CKT WITHOUT
MOUNTING EARS SHOWN



LOCK OPTION:



POSITIVE LOCK PASSIVE LOCK

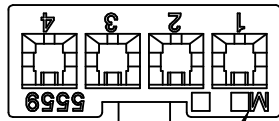
CKT SIZE	DIM A	DIM B	DIM C	DIM D
2	.165 (4.20)	.378 (9.60)	.394 (10.00)	.591 (15.00)
4	.496 (12.60)	.709 (18.00)	.724 (18.40)	.921 (23.40)
5	.661 (16.80)	.874 (22.20)	.890 (22.60)	1.087 (27.60)
6	.827 (21.00)	1.039 (26.40)	1.055 (26.80)	1.252 (31.80)
7	.992 (25.20)	1.205 (30.60)	1.220 (31.00)	1.417 (36.00)
8	1.157 (29.40)	1.370 (34.80)	1.386 (35.20)	1.583 (40.20)
9	1.323 (33.60)	1.535 (39.00)	1.551 (39.40)	1.748 (44.40)
10	1.488 (37.80)	1.701 (43.20)	1.717 (43.60)	1.913 (48.60)
11	1.654 (42.00)	1.866 (47.40)	1.882 (47.80)	2.079 (52.80)
12	1.819 (46.20)	2.031 (51.60)	2.047 (52.00)	2.244 (57.00)

NOTES:

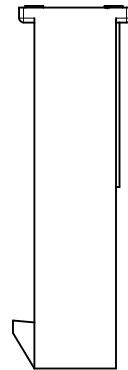
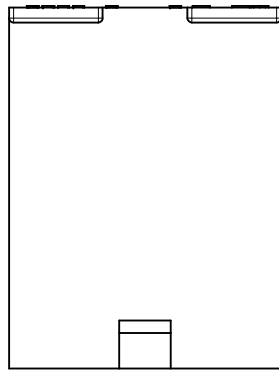
- MATERIAL: BLANK=NYLON 6/6, UL 94V-2, COLOR: NATURAL.
210=NYLON 6/6, UL 94V-0, COLOR: NATURAL.
400=NYLON 6/6, UL 94 V-0, COLOR: BLACK.
- FINISH: NOTE APPLICABLE
- PRODUCT SPECIFICATION: PS-5556-001
- PACKAGING SPECIFICATION: BULK PER PK-5559-003
- THIS PART MATES WITH RECEPTACLE NO. 5557.
- THIS PART IS FOR USE WITH MOLEX MALE TERMINAL NO. 5558-*
- PANEL MOUNT VERSION IS FOR USE WITH .031/.079/1.0.80/2.00 THICK PANELS.
- PANEL SHOULD BE PUNCHED IN THE DIRECTION OF CONNECTOR INSERTION.
- FACTORY ID MAY BE LOCATED ON EARS.
- THIS PART CONFORMS TO CLASS B REQUIREMENTS OF COSMETIC SPECIFICATION PS-45499-002.
- PART IS NOT DESIGNED FOR CURRENT SHARING.
- PARTS ARE NOT TO BE MATED OR UNMATED WHILE CIRCUITS ARE LIVE.
- WIRES ARE TO BE DRESSED IN SUCH A MANNER TO ALLOW THE TERMINALS TO FLOAT FREELY IN THE POCKET.

ADD 2 CKT EC NO: UCP2015-1291 DRVN: NGUYEN CHKD: BELL APPR: FSMITH 2014/11/12 2014/11/12 2015/02/09	QUALITY SYMBOLS ▽=0 ▽=0 ▽=0	GENERAL TOLERANCES (UNLESS SPECIFIED)		DIMENSION STYLE IN/MM		SCALE 4:1	DESIGN UNITS METRIC	THIRD ANGLE PROJECTION		
		4 PLACES ± --- ± ---	3 PLACES ± --- ± .010	2 PLACES ± 0.25 ± .015	1 PLACE ± 0.38 ± ---	0 PLACE ± ±	DRAWN BY KSS	DATE 2/19/89	TITLE MINI-FIT JR. SERIES PLUG (SINGLE ROW)	
		DRAFT WHERE APPLICABLE MUST REMAIN WITHIN DIMENSIONS		ANGULAR ±1/2°		APPROVED BY FSMITH		DATE 2011/03/10	DOCUMENT NO. SD-5559-NLP*	
		SIZE C		SEE CHART		MATERIAL NO.		SHEET NO. 1 OF 3		

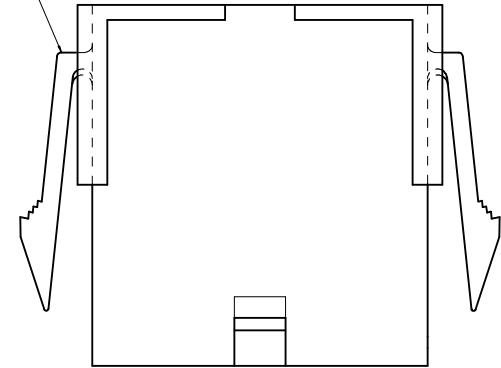
THIS DRAWING CONTAINS INFORMATION THAT IS PROPRIETARY TO MOLEX INCORPORATED AND SHOULD NOT BE USED WITHOUT WRITTEN PERMISSION



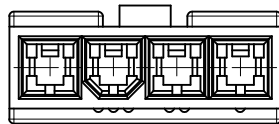
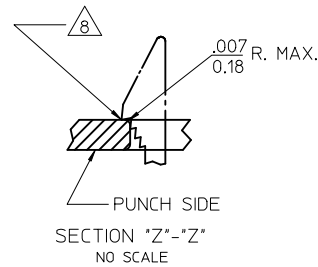
FACTORY ID
SEE NOTE 9



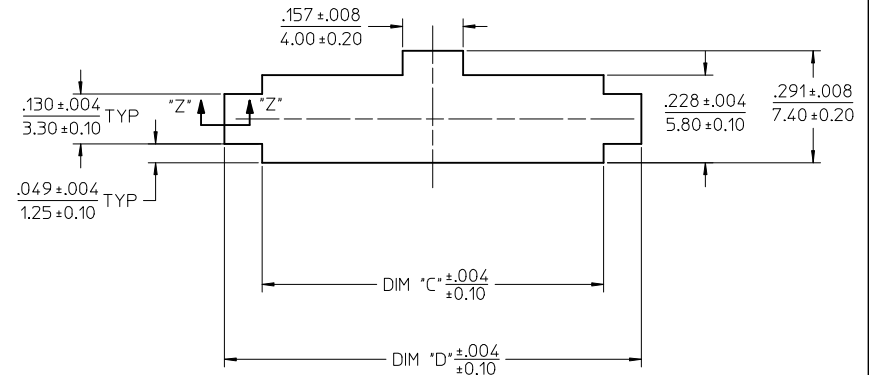
SEE NOTE 9



WITH MOUNTING EARS



4 CKT WITHOUT
MOUNTING EARS SHOWN



RECOMMENDED PANEL CUT-OUT
(SEE NOTE 7 & 8)



2 CIRCUIT



6 CIRCUIT

POLARIZATION

SEE SHEET 1 EC NO: UCP2015-1291 DRAWINGUYEN 2014/11/12 CHKD:JBELL 2014/11/12 APPR:FSMITH 2015/02/09 J9	QUALITY SYMBOLS ▽=0 ▽=0 ▽=0	GENERAL TOLERANCES (UNLESS SPECIFIED) mm INCH 4 PLACES ± --- ± --- 3 PLACES ± --- ± .010 2 PLACES ± 0.25 ± .015 1 PLACE ± 0.38 ± --- 0 PLACE ± ±	DIMENSION STYLE IN/MM DRAWN BY DATE KSS 2/19/89 CHECKED BY DATE RJF 2/19/89 APPROVED BY DATE FSMITH 2011/03/10	SCALE 4:1 DESIGN UNITS METRIC	THIRD ANGLE PROJECTION	
	DRAFT WHERE APPLICABLE MUST REMAIN WITHIN DIMENSIONS		MATERIAL NO. SEE CHART	TITLE MINI-FIT JR. SERIES PLUG (SINGLE ROW)	SHEET NO. 2 OF 3	
			ANGULAR ±1/2°	DOCUMENT NO. SD-5559-NLP*	molex	
	THIS DRAWING CONTAINS INFORMATION THAT IS PROPRIETARY TO MOLEX INCORPORATED AND SHOULD NOT BE USED WITHOUT WRITTEN PERMISSION					

13		12		11		10		9		8		7		6		5		4		3		2		1																													
TOOLED	PART NO	ENG NO		CKT SIZE	MOUNTING OPTION	LOCK OPTION	MATERIAL SEE NOTE I		TOOLED	PART NO	ENG NO		CKT SIZE	MOUNTING OPTION	LOCK OPTION	MATERIAL SEE NOTE I		TOOLED	PART NO	ENG NO		CKT SIZE	MOUNTING OPTION	LOCK OPTION	MATERIAL SEE NOTE I																												
J	YES	46999-0655	5559-02P2		2	W/EARS	POSITIVE	94V-2																																													
	YES	46999-0656	5559-02P3		2	W/O EAR	POSITIVE	94V-2				NO		NO E.D.P.	5559-04P4		4	W/EARS	PASSIVE	94V-2																																	
	YES	46999-0657	5559-02P2-2 I0		2	W/EARS	POSITIVE	94V-0				NO		NO E.D.P.	5559-04P5		4	W/O EAR	PASSIVE	94V-2																																	
	YES	46999-0658	5559-02P3-2 I0		2	W/O EAR	POSITIVE	94V-0				NO		NO E.D.P.	5559-04P4-2 I0		4	W/EARS	PASSIVE	94V-0																																	
	O	39-01-4042	5559-04P2		4	W/EARS	POSITIVE	94V-2				NO		NO E.D.P.	5559-04P5-2 I0		4	W/O EAR	PASSIVE	94V-0																																	
I	YES	39-01-4046	5559-04P3		4	W/O EAR	POSITIVE	94V-2				YES		50-29-1599	5559-05P4-2 I0		5	W/EARS	PASSIVE	94V-0																																	
	YES	39-01-4043	5559-04P2-2 I0		4	W/EARS	POSITIVE	94V-0				NO		NO E.D.P.	5559-05P5-2 I0		5	W/O EAR	PASSIVE	94V-0																																	
	YES	39-01-4047	5559-04P3-2 I0		4	W/O EAR	POSITIVE	94V-0				NO		NO E.D.P.	5559-05P5-400		5	W/O EAR	PASSIVE	94V-0																																	
	YES	46999-0561	5559-04P3-400		4	W/O EAR	POSITIVE	94V-0				NO		NO E.D.P.	5559-06P4		6	W/EARS	PASSIVE	94V-2																																	
	YES	39-01-4052	5559-05P2		5	W/EARS	POSITIVE	94V-2				NO		NO E.D.P.	5559-06P5		6	W/O EAR	PASSIVE	94V-2																																	
H	YES	39-01-4056	5559-05P3		5	W/O EAR	POSITIVE	94V-2				NO		NO E.D.P.	5559-06P4-2 I0		6	W/EARS	PASSIVE	94V-0																																	
	YES	39-01-4053	5559-05P2-2 I0		5	W/EARS	POSITIVE	94V-0				NO		NO E.D.P.	5559-06P5-2 I0		6	W/O EAR	PASSIVE	94V-0																																	
	YES	39-01-4057	5559-05P3-2 I0		5	W/O EAR	POSITIVE	94V-0				NO		NO E.D.P.	5559-07P4		7	W/EARS	PASSIVE	94V-2																																	
	YES	50-30-4446	5559-05P3-400		5	W/O EAR	POSITIVE	94V-0				NO		NO E.D.P.	5559-07P5		7	W/O EAR	PASSIVE	94V-2																																	
	YES	39-01-4062	5559-06P2		6	W/EARS	POSITIVE	94V-2				NO		NO E.D.P.	5559-07P4-2 I0		7	W/EARS	PASSIVE	94V-0																																	
	YES	39-01-4066	5559-06P3		6	W/O EAR	POSITIVE	94V-2				NO		NO E.D.P.	5559-07P5-2 I0		7	W/O EAR	PASSIVE	94V-0																																	
G	YES	39-01-4063	5559-06P2-2 I0		6	W/EARS	POSITIVE	94V-0				NO		NO E.D.P.	5559-08P4		8	W/EARS	PASSIVE	94V-2																																	
	YES	39-01-4067	5559-06P3-2 I0		6	W/O EAR	POSITIVE	94V-0				NO		NO E.D.P.	5559-08P5		8	W/O EAR	PASSIVE	94V-2																																	
	NO	39-01-4072	5559-07P2		7	W/EARS	POSITIVE	94V-2				NO		NO E.D.P.	5559-08P4-2 I0		8	W/EARS	PASSIVE	94V-0																																	
	NO	39-01-4076	5559-07P3		7	W/O EAR	POSITIVE	94V-2				NO		NO E.D.P.	5559-08P5-2 I0		8	W/O EAR	PASSIVE	94V-0																																	
	NO	39-01-4073	5559-07P2-2 I0		7	W/EARS	POSITIVE	94V-0				NO		NO E.D.P.	5559-09P4		9	W/EARS	PASSIVE	94V-2																																	
F	NO	39-01-4077	5559-07P3-2 I0		7	W/O EAR	POSITIVE	94V-0				NO		NO E.D.P.	5559-09P5		9	W/O EAR	PASSIVE	94V-2																																	
	NO	39-01-4082	5559-08P2		8	W/EARS	POSITIVE	94V-2				NO		NO E.D.P.	5559-09P4-2 I0		9	W/EARS	PASSIVE	94V-0																																	
	NO	39-01-4086	5559-08P3		8	W/O EAR	POSITIVE	94V-2				NO		NO E.D.P.	5559-09P5-2 I0		9	W/O EAR	PASSIVE	94V-0																																	
	NO	39-01-4083	5559-08P2-2 I0		8	W/EARS	POSITIVE	94V-0				NO		NO E.D.P.	5559-10P4		10	W/EARS	PASSIVE	94V-2																																	
	NO	39-01-4087	5559-08P3-2 I0		8	W/O EAR	POSITIVE	94V-0				NO		NO E.D.P.	5559-10P5		10	W/O EAR	PASSIVE	94V-2																																	
E	NO	39-01-4092	5559-09P2		9	W/EARS	POSITIVE	94V-2				NO		NO E.D.P.	5559-10P4-2 I0		10	W/EARS	PASSIVE	94V-0																																	
	NO	39-01-4096	5559-09P3		9	W/O EAR	POSITIVE	94V-2				NO		NO E.D.P.	5559-10P5-2 I0		10	W/O EAR	PASSIVE	94V-0																																	
	NO	39-01-4093	5559-09P2-2 I0		9	W/EARS	POSITIVE	94V-0				NO		NO E.D.P.	5559-11P4		11	W/EARS	PASSIVE	94V-2																																	
	NO	39-01-4097	5559-09P3-2 I0		9	W/O EAR	POSITIVE	94V-0				NO		NO E.D.P.	5559-11P5		11	W/O EAR	PASSIVE	94V-2																																	
	NO	39-01-4102	5559-10P2		10	W/EARS	POSITIVE	94V-2				NO		NO E.D.P.	5559-11P4-2 I0		11	W/EARS	PASSIVE	94V-0																																	
	NO	39-01-4106	5559-10P3		10	W/O EAR	POSITIVE	94V-2				NO		NO E.D.P.	5559-11P5-2 I0		11	W/O EAR	PASSIVE	94V-0																																	
D	NO	39-01-4103	5559-10P2-2 I0		10	W/EARS	POSITIVE	94V-0				NO		NO E.D.P.	5559-12P4		12	W/EARS	PASSIVE	94V-2																																	
	NO	39-01-4107	5559-10P3-2 I0		10	W/O EAR	POSITIVE	94V-0				NO		NO E.D.P.	5559-12P5		12	W/O EAR	PASSIVE	94V-2																																	
	NO	39-01-4112	5559-11P2		11	W/EARS	POSITIVE	94V-2				NO		NO E.D.P.	5559-12P4-2 I0		12	W/EARS	PASSIVE	94V-0																																	
	NO	39-01-4116	5559-11P3		11	W/O EAR	POSITIVE	94V-2				NO		NO E.D.P.	5559-12P5-2 I0		12	W/O EAR	PASSIVE	94V-0																																	
	NO	39-01-4113	5559-11P2-2 I0		11	W/EARS	POSITIVE	94V-0				NO		NO E.D.P.																																							
	NO	39-01-4117	5559-11P3-2 I0		11	W/O EAR	POSITIVE	94V-0				NO		NO E.D.P.																																							
C	NO	39-01-4122	5559-12P2		12	W/EARS	POSITIVE	94V-2				NO		NO E.D.P.																																							
	NO	39-01-4126	5559-12P3		12	W/O EAR	POSITIVE	94V-2				NO		NO E.D.P.																																							
	NO	39-01-4123	5559-12P2-2 I0		12	W/EARS	POSITIVE	94V-0				NO		NO E.D.P.																																							
	NO	39-01-4127	5559-12P3-2 I0		12	W/O EAR	POSITIVE	94V-0				NO		NO E.D.P.																																							
B	*O* = OBSOLETE LEGEND BASE NO ——— 5559-*** P * - * ——— MATERIAL OPTION: SEE NOTE I CIRCUIT SIZE (04-12) ——— MOUNTING AND LOCK OPTION: 2=WITH EARS, POSITIVE LOCK 3=WITHOUT EARS, POSITIVE LOCK 4=WITH EARS, PASSIVE LOCK 5=WITHOUT EARS, PASSIVE LOCK PLUG ———																																																				
A	<table border="1"> <tr> <td rowspan="4"> SEE SHEET 1 EC NO: UCP2015-1291 DRAWING: NGUYEN 2014/11/12 CHKD: BELL 2014/11/12 APPR: FSM/TH 2015/02/09 REV: J9 </td> <td> QUALITY SYMBOLS ▽=0 ▽=0 ▽=0 </td> <td> GENERAL TOLERANCES (UNLESS SPECIFIED) <table border="1"> <tr> <th></th> <th>mm</th> <th>INCH</th> </tr> <tr> <td>4 PLACES</td> <td>± ---</td> <td>± ---</td> </tr> <tr> <td>3 PLACES</td> <td>± ---</td> <td>± .010</td> </tr> <tr> <td>2 PLACES</td> <td>± 0.25</td> <td>± .015</td> </tr> <tr> <td>1 PLACE</td> <td>± 0.38</td> <td>± ---</td> </tr> <tr> <td>0 PLACE</td> <td>±</td> <td>±</td> </tr> </table> </td> <td> DIMENSION STYLE IN/MM DRAWN BY: KSS DATE: 2/19/89 CHECKED BY: RJF DATE: 2/19/89 APPROVED BY: FSM/TH DATE: 2011/03/10 </td> <td> SCALE: 1:1 DESIGN UNITS: METRIC THIRD ANGLE PROJECTION </td> <td> TITLE: MINI-FIT JR. SERIES PLUG (SINGLE ROW) molex MATERIAL NO. SEE CHART DOCUMENT NO. SD-5559-NLP* SHEET NO. 3 OF 3 </td> </tr> <tr> <td colspan="2"> ANGULAR ±1/2° </td> <td colspan="2"> DRAFT WHERE APPLICABLE MUST REMAIN WITHIN DIMENSIONS </td> <td colspan="2"> THIS DRAWING CONTAINS INFORMATION THAT IS PROPRIETARY TO MOLEX INCORPORATED AND SHOULD NOT BE USED WITHOUT WRITTEN PERMISSION </td> </tr> </table>																							SEE SHEET 1 EC NO: UCP2015-1291 DRAWING: NGUYEN 2014/11/12 CHKD: BELL 2014/11/12 APPR: FSM/TH 2015/02/09 REV: J9	QUALITY SYMBOLS ▽=0 ▽=0 ▽=0	GENERAL TOLERANCES (UNLESS SPECIFIED) <table border="1"> <tr> <th></th> <th>mm</th> <th>INCH</th> </tr> <tr> <td>4 PLACES</td> <td>± ---</td> <td>± ---</td> </tr> <tr> <td>3 PLACES</td> <td>± ---</td> <td>± .010</td> </tr> <tr> <td>2 PLACES</td> <td>± 0.25</td> <td>± .015</td> </tr> <tr> <td>1 PLACE</td> <td>± 0.38</td> <td>± ---</td> </tr> <tr> <td>0 PLACE</td> <td>±</td> <td>±</td> </tr> </table>		mm	INCH	4 PLACES	± ---	± ---	3 PLACES	± ---	± .010	2 PLACES	± 0.25	± .015	1 PLACE	± 0.38	± ---	0 PLACE	±	±	DIMENSION STYLE IN/MM DRAWN BY: KSS DATE: 2/19/89 CHECKED BY: RJF DATE: 2/19/89 APPROVED BY: FSM/TH DATE: 2011/03/10	SCALE: 1:1 DESIGN UNITS: METRIC THIRD ANGLE PROJECTION	TITLE: MINI-FIT JR. SERIES PLUG (SINGLE ROW) molex MATERIAL NO. SEE CHART DOCUMENT NO. SD-5559-NLP* SHEET NO. 3 OF 3	ANGULAR ±1/2°		DRAFT WHERE APPLICABLE MUST REMAIN WITHIN DIMENSIONS		THIS DRAWING CONTAINS INFORMATION THAT IS PROPRIETARY TO MOLEX INCORPORATED AND SHOULD NOT BE USED WITHOUT WRITTEN PERMISSION	
SEE SHEET 1 EC NO: UCP2015-1291 DRAWING: NGUYEN 2014/11/12 CHKD: BELL 2014/11/12 APPR: FSM/TH 2015/02/09 REV: J9	QUALITY SYMBOLS ▽=0 ▽=0 ▽=0	GENERAL TOLERANCES (UNLESS SPECIFIED) <table border="1"> <tr> <th></th> <th>mm</th> <th>INCH</th> </tr> <tr> <td>4 PLACES</td> <td>± ---</td> <td>± ---</td> </tr> <tr> <td>3 PLACES</td> <td>± ---</td> <td>± .010</td> </tr> <tr> <td>2 PLACES</td> <td>± 0.25</td> <td>± .015</td> </tr> <tr> <td>1 PLACE</td> <td>± 0.38</td> <td>± ---</td> </tr> <tr> <td>0 PLACE</td> <td>±</td> <td>±</td> </tr> </table>		mm	INCH	4 PLACES	± ---	± ---	3 PLACES	± ---	± .010	2 PLACES	± 0.25	± .015	1 PLACE	± 0.38	± ---	0 PLACE	±	±	DIMENSION STYLE IN/MM DRAWN BY: KSS DATE: 2/19/89 CHECKED BY: RJF DATE: 2/19/89 APPROVED BY: FSM/TH DATE: 2011/03/10	SCALE: 1:1 DESIGN UNITS: METRIC THIRD ANGLE PROJECTION	TITLE: MINI-FIT JR. SERIES PLUG (SINGLE ROW) molex MATERIAL NO. SEE CHART DOCUMENT NO. SD-5559-NLP* SHEET NO. 3 OF 3																														
		mm	INCH																																																		
	4 PLACES	± ---	± ---																																																		
	3 PLACES	± ---	± .010																																																		
2 PLACES	± 0.25	± .015																																																			
1 PLACE	± 0.38	± ---																																																			
0 PLACE	±	±																																																			
ANGULAR ±1/2°		DRAFT WHERE APPLICABLE MUST REMAIN WITHIN DIMENSIONS		THIS DRAWING CONTAINS INFORMATION THAT IS PROPRIETARY TO MOLEX INCORPORATED AND SHOULD NOT BE USED WITHOUT WRITTEN PERMISSION																																																	