



# Series 8 Elevator Socket w/Bifurcated Contacts & Solder Pin Tails

## FEATURES

- Ideal for Elevating Devices (Displays, Switches, etc.) to Desired Level with 0.260 to 1.250 [6.60 to 31.75] Height Extension

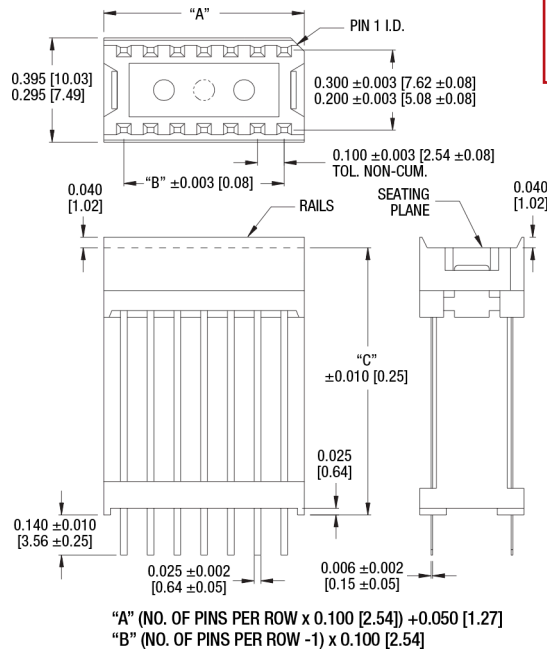
## GENERAL SPECIFICATIONS

- **STANDARD SOCKET BODY & SPACER:** black UL 94V-0 glass-filled 4/6 Nylon
- **BIFURCATED CONTACTS:** Grade A spring-tempered Phosphor Bronze per QQ-B-750
- **CONTACT PLATING:** 50-130µ [1.27-3.30µ] matte Sn per ASTM B545-97(2004)e1 over 50µ [1.27µ] Ni per SAE AMS-QQ-N-290B; -OR- 50-130µ [1.27-3.30µ] 90/10 Sn/Pb per MIL-T-10727 Type 1 over 50µ [1.27µ] Ni per SAE AMS-QQ-N-290B; -OR- 10µ [0.25µ] min. Au per MIL-G-45204 over 50µ [1.27µ] Ni per SAE AMS-QQ-N-290B. (Consult factory for availability)
- **CONTACT CURRENT RATING:** 1 amp
- **INSERTION FORCE:** 110g/pin average
- **WITHDRAWAL FORCE:** 75g/pin average
- **OPERATING TEMPERATURE:** -67°F to 221°F [-55°C to 105°C] Sn and Sn/Pb plating; -67°F to 257°F [-55°C to 125°C] Au plating
- **ACCEPTS:** flat leads up to 0.014 thick x 0.020 wide [0.36-0.51], round leads up to 0.020 [0.51] dia.
- **SOCKET ACCEPTS:** lead lengths from seating plane 0.075-0.160 [1.91-4.06]

## MOUNTING CONSIDERATIONS

- **SUGGESTED PCB HOLE SIZE:** 0.035 ±0.002 [0.89 ±0.05] dia.

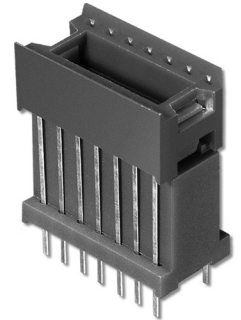
Part No.	Dim. "C"
10-28440-10	0.440 [11.18]
14-8260-10	0.260 [6.60]
14-8350-10	0.350 [8.89]
14-8400-10	0.400 [10.16]
14-8435-10	0.440 [11.18]
14-8470-10	0.470 [11.94]
14-8510-10	0.510 [12.95]
14-8620-10	0.620 [15.75]
14-8770-10	0.770 [19.56]
14-8870-10	0.870 [22.10]
14-81000-10	1.000 [24.40]
14-81100-10	1.100 [27.94]
14-81187-10	1.180 [29.97]
14-81250-10	1.250 [31.75]
16-8430-10	0.430 [10.92]
16-8480-10	0.480 [12.19]
16-8700-10	0.700 [17.78]
16-8810-10	0.810 [20.57]
16-81250-10	1.250 [31.75]



## ORDERING INFORMATION

**XX-X8 XXXX-1XXX XX**

- Optional Rails  
WR = Without Rails
- Plating  
10 = Sn  
10TL = Sn/Pb  
11 = Au (Consult Factory)
- Seating Plane Height  
(See Table, Dim "C")
- Row-to-Row Spacing  
8 = 0.300 [7.62] centers  
(14- & 16-pin)  
28 = 0.200 [5.08] centers  
(10-pin only)
- No. of Pins  
(10, 14, 16)



ALL DIMENSIONS: INCHES [MILLIMETERS]

ALL TOLERANCES: ±0.005 [0.13] UNLESS OTHERWISE SPECIFIED

FOR COLLET CONTACTS ON 0.200 [5.08] CENTERS, SEE [DATA SHEET 13007](#)

FOR COLLET CONTACTS ON 0.300 [7.62] CENTERS, SEE [DATA SHEET 13008](#)

CONSULT FACTORY FOR OTHER SIZES AND CONFIGURATIONS

CUSTOMIZATION: ARIES SPECIALIZES IN CUSTOM DESIGN AND PRODUCTION. SPECIAL MATERIALS, PLATINGS, SIZES, AND CONFIGURATIONS CAN BE FURNISHED, DEPENDING ON QUANTITY.

ARIES RESERVES THE RIGHT TO CHANGE PRODUCT GENERAL SPECIFICATIONS WITHOUT NOTICE

PRINTOUTS OF THIS DOCUMENT MAY BE OUT-OF-DATE AND SHOULD BE CONSIDERED UNCONTROLLED



**ARIES**  
ELECTRONICS, INC.

2609 Bartram Road • Bristol, PA 19007-6810 USA

TEL 215-781-9956 • FAX 215-781-9845

WWW.ARIESELEC.COM • INFO@ARIESELEC.COM



13006  
Rev. 1.2  
1 of 1