



ENTERPRISE-CLASS
CELLULAR ROUTERS FOR
RUGGED APPLICATIONS



DIGI TRANSPORT® WR44 R

All-in-one cellular router with advanced routing and VPN features, designed specifically for use in rugged environments

The Digi TransPort WR44 R is a rugged, all-in-one 4G LTE Advanced mobile communications solution with true enterprise-class routing, security and firewall. Featuring a heavy-duty cast aluminum enclosure, it offers a flexible interface design with an optional integrated Wi-Fi access point (with multi SSID), USB, serial and 4-port Ethernet switch, as well as a variety of configuration options including GPS and CAN support.

These routers are ideal for transportation and mobile applications. Flexible power options include 9-36 VDC locking barrel or automotive Molex connectors for direct integration into vehicle applications. Also ideal for mobile

applications is the cellular to Wi-Fi autoswitch feature, which uses the highest speed/lowest cost WAN network available.

All Digi TransPort products offer an advanced routing, security and firewall feature set including stateful inspection firewall and integrated VPN. Enterprise class protocols incorporate BGP, OSPF and VRRP+. Advanced features allow the Digi TransPort to be used as a component of a PCI compliant network.

Digi Remote Manager® provides easy setup, configuration and maintenance of large installations of Digi TransPort and third-party devices.

BENEFITS

- Rugged, enterprise-class cellular routers with advanced dynamic routing, security and firewall features
- Heavy-duty cast aluminum enclosure for reliable performance in rugged environments
- Integrated 802.11 ac/a/b/g/n; a/n Wi-Fi access point (optional) and 4-port Ethernet switch
- Flexible interfaces including GPS and CAN with DC power options
- Cellular to Wi-Fi autoswitch feature automatically uses the highest speed/lowest cost WAN network available
- Digi Remote Manager® provides mass configuration, device management and troubleshooting tools

RELATED PRODUCTS



Digi TransPort®
WR11 XT



Digi TransPort®
WR21



Digi TransPort®
WR44 RR

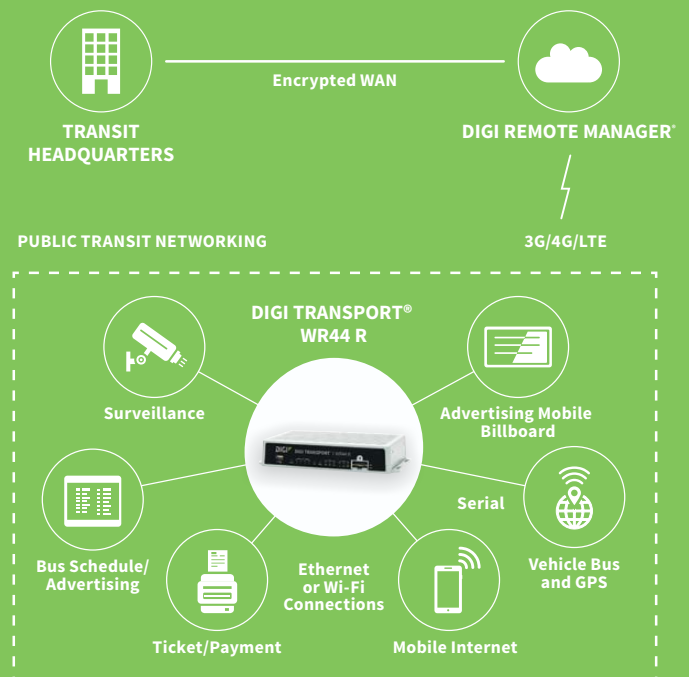


Accessories



Digi Remote
Manager®

APPLICATION EXAMPLE



SPECIFICATIONS

Digi TransPort® WR44 R

WIRELESS INTERFACES

CELLULAR*

LTE - NORTH AMERICA/EMEA (M8)	LTE Advanced CAT 6: 700(B12,B13,B29)/800(B20,B26)/850(B5)/900(B8)/AWS(B4)/1800(B3)/1900(B2,B25)/2100(B1)/2300(B30)/2500(B41)/2600(B7) 3G HSPA+: 850/900/AWS/1800/1900/2100 MHz Transfer rate (max): 300 Mbps down, 150 Mbps up Approvals: PTCRB, AT&T, Verizon, Vodafone (pending)
LTE - ANZ/LATAM (L9)	LTE-Advanced CAT 6: 700(B28)/850(B5,B18,B19)/900(B8)/1500(B21)/1800(B3)/1900(B39)/2100(B1)/2600(B7,B38)/2300(B40)/2500(B41) 3G HSPA+: 800/850/900/1700/2100 MHz Transfer rate (max): 300 Mbps down, 150 Mbps up
LTE - EMEA/APAC (M2)	LTE CAT 3: 450(B31)/800(B20)/1800(B3)/2600 (B7) HSPA+: 900/2100 MHz EDGE: 900/1800 MHz Transfer rate (max): 100 Mbps down, 50 Mbps up
CONNECTOR	(2) 50 Ω SMA (Center pin: female)
SIM SLOTS	(2) Mini-SIM (2FF)
SIM SECURITY	SIM slot cover plate

WI-FI**

STANDARD	802.11 ac/a/b/g/n 2.4/5 GHz
MODES	Access point, client and support for multiple SSID
TRANSMIT POWER	20 dBm + 1.0/-1.5 dBm
RECEIVE SENSITIVITY	54 Mbps / <-72 dBm and 11 Mbps / -90 dBm
SECURITY	Open or shared key authentication; WEP (64- and 128-bit) encryption; WPA/WPA2 with RADIUS (WPA enterprise and pre-shared keys)
CONNECTORS	(2) 50 Ω RP-SMA (center pin: male)

GPS**

CHANNELS	50
SENSITIVITY	-163 dB
PROTOCOL	NMEA 0183 V2.3 sentence output; +3.3 VDC active antenna drive; NMEA stream to local serial port or over TCP/IP
NAVIGATION	Galileo ready
AUGMENTATION	SBAS
COLD START	< 27 seconds TTFF (90%)
HORIZONTAL ACCURACY	< 2.5 meters (90%)
VELOCITY ACCURACY	0.1m/s
CONNECTOR	(1) 50 Ω SMA (Center pin: female)
ADDITIONAL FEATURES	Send GPS via UDP/IP, TCP/IP (up to two destinations) or serial; Customize and/or send data using Python; GPS status query; Time source capable

WIRED INTERFACES

SERIAL

PORTS	(1) DB-9; DCE
STANDARD	RS-232
SIGNAL SUPPORT	TXD, RXD, RTS, CTS, DTR, DCD, DSR, RI
FLOW CONTROL	Software (XON/XOFF), hardware supported

ETHERNET

PORTS	(4) RJ-45; 10/100 Mbps (auto-sensing)
-------	---------------------------------------

USB

PORTS	(1) USB 2.0 Type A
-------	--------------------

OTHER

EXPANSION CARDS	Option of fleet expansion card
-----------------	--------------------------------

* Transfer rates are network operator dependent.

** Optional hardware.

SPECIFICATIONS

Digi TransPort® WR44 R

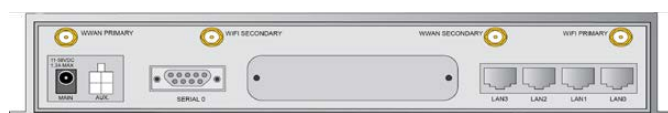
SOFTWARE	
REMOTE MANAGEMENT	Digi Remote Manager® (cloud based); SNMP v1/v2c/v3 (user installed/managed)
LOCAL MANAGEMENT	Web interface (HTTP/HTTPS); CLI (Telnet, SSH, SMS, Serial port)
MANAGEMENT/TROUBLESHOOTING TOOLS	FTP, SFTP, SCP, protocol analyzer with PCAP for Wireshark, event logging with Syslog and SMTP, NTP/SNTP
MEMORY	128 MB NAND Flash/64 MB DDR2 SDRAM
POWER	
INPUT	9 – 36 VDC
CONSUMPTION	15W max, 8.5W typical
CONNECTOR	Locking barrel and 4-pin terminal block (2 pins are used for power; the other 2 pins are used for I/O)
PHYSICAL	
DIMENSIONS (L X W X H)	5.5 in x 10 in x 1.9 in (140 mm x 254 mm x 48 mm)
WEIGHT	2.4 lbs (1.1 kg)
STATUS LEDS	Power, LAN, Wi-Fi, Serial, WWAN (Link, Act, SIM), signal strength
MATERIAL/RATING	Aluminum alloy / IP30
MOUNTING	(4) mounting slots on the unit's flange
ENVIRONMENTAL	
OPERATING TEMPERATURE	Non-Wi-Fi variants: -40° C to +70° C; Single-Wi-Fi variants: -20° C to +70° C; Dual-Wi-Fi variants: -20°C to +60°C; (Reduced cellular performance may occur above +60° C)
STORAGE TEMPERATURE	-40° C to +85° C
RELATIVE HUMIDITY	0% to 95% (non-condensing) @ 25° C
ETHERNET ISOLATION	1.5 kV RMS
SERIAL PORT PROTECTION (ESD)	15 kV
APPROVALS	
CELLULAR	PTCRB, NAPRD.03, GCF-CC, R&TTE, EN 301 511
CDMA/EV-DO	CDG TIA/EIA-690, CDG TIA/EIA-98-E
SAFETY	UL 60950, CSA 22.2 No. 60950, EN60950
EMISSIONS/IMMUNITY	CE, FCC Part 15 Class B, AS/NZS CISPR 22, EN55024, EN55022 Class B
INDUSTRY	EN 300 019-2-5 (specification for environmental tests for ground vehicle installations - covers temperature, humidity, vibration and shock)
WARRANTY	
PRODUCT WARRANTY	3 years

ENTERPRISE SOFTWARE

DESCRIPTION

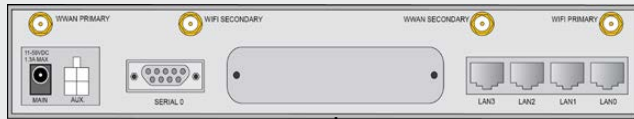
PROTOCOLS	HTTP, HTTPS, FTP, SFTP, SSL, SMTP, SNMP (v1/v2c/v3), SSH, Telnet and CLI for web management; Remote management via Digi Remote Manager; SMS management, protocol analyzer, ability to capture PCAP for use with Wireshark; DynDNS; Dynamic DNS client compatible with BIND9/No-IP/DynDNS
SECURITY/VPN	Stateful inspection firewall with scripting, address and port translation; VPN: IPSec with IKEv1, IKEv2, NAT Traversal; SSL, SSLv2, FIPS 197, open VPN client and server; PPTP, L2TP; (5) VPN tunnels (upgradable to a maximum of 200); Cryptology: SHA-1, MD5, RSA; Encryption: DES, 3DES and AES up to 256-bit; Authentication: RADIUS, TACACS+, SCEP for X.509 certificates; Content filtering (via 3rd party); MAC address filtering; VLAN support; Ethernet port isolation
ROUTING/FAILOVER	IP pass-through; NAT, NATP with IP port forwarding; Ethernet bridging; GRE; Multicast routing; Routing protocols: PPP, PPPoE, RIP (v1, v2) OSPF, SRI, BGP, iGMP routing (multicast); RSTP (Rapid Spanning Tree Protocol); IP failover: VRRP, VRRP+TM; Automatic failover/failback to second GSM network/standby APN
OTHER PROTOCOLS	DHCP; Dynamic DNS client compatible with BIND9/No-IP/DynDNS; QoS via TOS/DSCP/WRED; Modbus UDP/TCP to serial; X.25 including XOT, SNA/IP, TPAD and PAD; Protocol switch; Modbus bridging for connecting diverse field assets

PRODUCT IMAGES

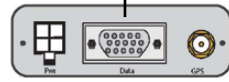


SPECIFICATIONS

Connector | Specification



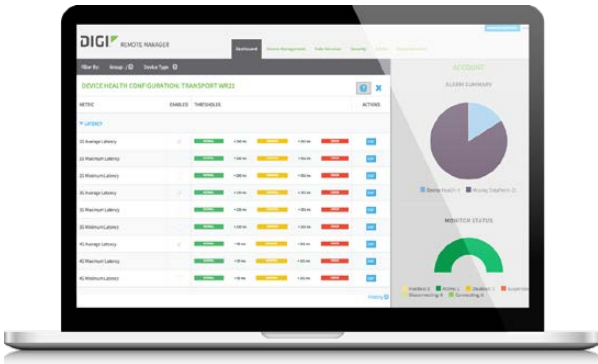
FLEET (F1)



(1) 4-pin, (1) 15-pin, (1) SMA

Flexible transportation/fleet focused applications requiring CAN bus, J1708, GPS, Non-isolated digital I/O, Ignition Sense, 3-Axis accelerometer, and power control of Digi TransPort interfaces. Fully programmable via Python for embedded Digi TransPort applications.

DIGI REMOTE MANAGER®



CAPABILITIES

- Centralized management of remote devices over 3G/4G/LTE
- Define standard configurations and automatically monitor individual devices for PCI security compliance
- Report and alert on performance statistics, including connection history, signal quality, latency, data usage and packet loss
- No servers or applications to operate and maintain
- Complete tasks for your entire device network in minutes
- Edit configurations and update firmware for your individual devices or groups
- Monitor the status and location of your remote device via a web browser
- Active or deactivate cellular lines and monitor data to ensure you never incur overage charges

INFRASTRUCTURE

- Hosted in a commercial-grade SAS 70-certified environment
- Superior availability, operating to 99.9% or greater
- Open APIs available to support application development

SECURITY

- Certified SSAE-16 and ISO27001 facilities
- Over 175 Security Controls in place to protect your data
- Enables compliance with security frameworks like PCI, HIPAA, NIST and more
- Earned SkyHigh's Cloud Trust Program highest ranking of Enterprise-Ready

PART NUMBERS

DIGI TRANSPORT WR44 R

WR44-M800-AE1-RF	4G LTE North America/EMEA	Wi-Fi, Antennas not Included
WR44-M8F1-AE1-RF		Wi-Fi, GPS, CAN, Antennas not Included
WR44-L900-AE1-RF	4G LTE LATAM/ANZ	Wi-Fi, Antennas not Included
WR44-L9F1-AE1-RF		Wi-Fi, GPS, CAN, Antennas not Included
WR44-M2F1-NE1-RF	4G LTE EMEA/APAC (450MHz)	Wi-Fi, GPS, CAN, Antennas not included

PART NUMBERS

ACCESSORIES*

76000982	Accessory Kit (CANBus Serial Cable, Power Cord, and 14-pin I/O Connector)
----------	---

*Sold separately, unless otherwise noted.

DIGI SERVICE AND SUPPORT / You can purchase with confidence knowing that Digi is always available to serve you with expert technical support and our industry leading warranty. For detailed information visit www.digi.com/support.

© 1996-2018 Digi International Inc. All rights reserved.
All trademarks are the property of their respective owners.

DIGI INTERNATIONAL WORLDWIDE HQ
877-912-3444 / 952-912-3444 / www.digi.com

DIGI INTERNATIONAL GERMANY
+49-89-540-428-0

DIGI INTERNATIONAL JAPAN
+81-3-5428-0261 / www.digi-intl.co.jp

DIGI INTERNATIONAL SINGAPORE
+65-6213-5380

DIGI INTERNATIONAL CHINA
+86-21-50492199 / www.digi.com.cn



91001643
D10/1217