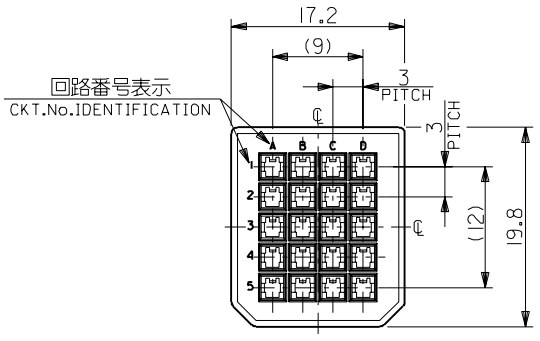
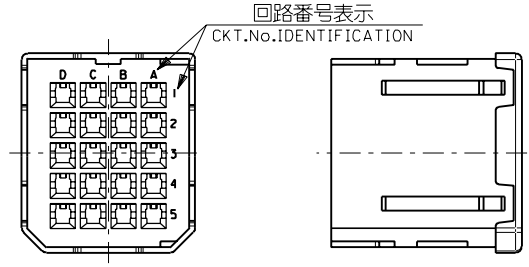
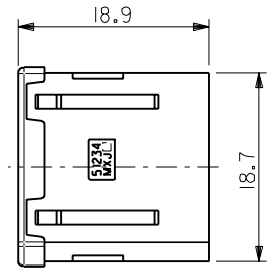


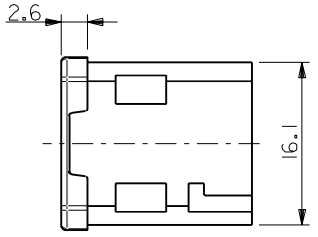
DWG. NO. SD-51234-005



嵌合側
MATING SIDE



電線挿入側
WIRE SIDE



注記
NOTES

1. 材質
MATERIAL
ガラス入りPBT樹脂 UL94V-0 色:黒
HOUSING : PBT G.F. UL94V-0 COLOR : BLACK
2. 適用端子 : 56116-8*90 , 56117-8*90
56118-8*90 , 56119-8*90
APPLICABLE CRIMP PIN : 56116-8*90 , 56117-8*90
56118-8*90 , 56119-8*90
3. 適用シエルボディ : 56380-2000
APPLICABLE SHELL BODY : 56380-2000
4. 適用シエルカバー : 56381-2000
APPLICABLE SHELL COVER : 56381-2000
5. 嵌合相手 : 51238-201*
MEET WITH : 51238-201*

<誤嵌合防止キー(極性)タイプ> <POLARITY KEY TYPE>

51234-2001	51234-2002	51234-2003	51234-2004	51234-2005
STANDARD TYPE	A TYPE	B TYPE	C TYPE	D TYPE

C-4	D	51234-2005	51234-**0*	20
C-3	C	51234-2004		
B-3	B	51234-2003		
B-2	A	51234-2002		
—	STANDARD	51234-2001		
POLARITY POSITION (CIRCUIT No.)	POLARITY TYPE	MATERIAL No.	MODEL No.	CIRCUIT

DO NOT SCALE DRAWING

EC NO. DRWN: CHK: APPR:	EC NO. DRWN: CHK: APPR:	EC NO. DRWN: CHK: APPR:	REVISED 01/10/04 EC NO. J2002-0786 DRWN: S.AKIYAMA CHK: J.MIYAZAWA APPR: Y.O.ITO	EC NO. JD2001-1040 DRWN: S.AKIYAMA CHK: J.MIYAZAWA APPR: H.IKESUGI	MATERIAL 材料 #	GENERAL TOLERANCES: (UNLESS SPECIFIED) 一般公差	SCALE 2-1	DESIGN UNITS mm INCH	THIRD ANGLE PROJECTION	DIMENSIONS: mm INCH	SHT	REV			
			A	0	注記参照 SEE NOTES	10 UNDER 未満 ±0.2	DRAWN BY & DATE S. Akiyama 1/01/25	mm INCH	mm ONLY	mm ONLY					
					FINISH 仕上げ #	10 OVER 30 UNDER 未満 ±0.25	CHECKED BY & DATE J. Miyazawa / Y. Ito	mm ONLY	mm ONLY	mm ONLY					
					WIRE RANGE 適用電線範囲 #	30 OVER 以上 ±0.3	APPROVED BY & DATE S. Akiyama	mm ONLY	mm ONLY	mm ONLY					
					INS. RANGE 被覆外径 #	ANGLE 角度 ±3°	CAD FILE NAME 51234005.S01	mm ONLY	mm ONLY	mm ONLY					
TITLE: COMPACT ROBOT CONN. (CRC) PLUG PIN HS'G										MATERIAL NO. SEE CHART		DRAWING NO. SD-51234-005		SHEET NO. 1 OF 1	
MOLEX INCORPORATED										THIS DRAWING CONTAINS INFORMATION THAT IS PROPRIETARY TO MOLEX INCORPORATED AND SHOULD NOT BE USED WITHOUT WRITTEN PERMISSION.					
										SIZE B		EN-02J(097) MXJ-54			

51234005.S01