

ATLANTIC VERSION TERMINATOR INTERFACE ADAPTER	PART NUMBER	REVISION	DESCRIPTION	FEED TYPE	APPLICATOR STYLE CONVERSION CHART						
					CONVERT TO	PART NUMBERS REQUIRED					
	2151924-1	A	FINE CRIMP HEIGHT ADJUST	MECHANICAL	PNEUMATIC FEED	2119950-1	1338685-1	5-18022-5	2119641-1	2119799-1	2063440-1
					SERVO LATCH PLATE	2119951-1	-	8-2151924-5	1901094-3	2-1752354-0	2168400-6 (QUANTITY 2)
					SMART APPLICATOR	2161326-1	-	8-2151924-4	-	-	-
	2151924-2	A	FINE CRIMP HEIGHT ADJUST	PNEUMATIC	MECHANICAL FEED	2119949-1	1338685-1	5-18022-5	2119653-1	-	-
					SERVO LATCH PLATE	2119951-1	-	8-2151924-5	1901094-3	2-1752354-0	2168400-6 (QUANTITY 2)
					SMART APPLICATOR	2161326-1	-	8-2151924-4	-	-	-
	2151924-5	A	FINE CRIMP HEIGHT ADJUST	SERVO LATCH PLATE <sup>4</sup>	MECHANICAL FEED	2119949-1	1338685-1	5-18022-5	2119653-1	-	-
PNEUMATIC FEED					2119950-1	1338685-1	5-18022-5	2119641-1	2119799-1	2063440-1	
2151924-6	A	NON-CRIMP HEIGHT ADJUST	SERVO LATCH PLATE <sup>4</sup> <sup>12</sup>	-	-	-	-	-	-	-	
2151924-7	A	FINE CRIMP HEIGHT ADJUST	NONE	-	-	-	-	-	-	-	
7-2151924-7	A	CRIMP TOOLING KIT	-	-	-	-	-	-	-	-	

APPLICATOR DATA		
CRIMP	SIZE	TYPE
WIRE	1.58 mm [.062]	F
INSUL	2.29 mm [.090]	O

APPLICATOR INSTRUCTIONS  
408-10389

TERMINAL DATA: TE TERMINAL		TE CRIMP SPECIFICATION	
TERMINAL NAME: EMAX SOCKET CONTACT F-CRIMP			
WIRE STRIP LENGTH		INSULATION DIAMETER RANGE	
3.40-4.00 mm [.134-.157 IN]		Ø1.00-1.60 mm [.039-.063 IN]	
TERMINAL APPLICATION SPECIFICATION	114-18079		
	114-18050		
TERMINALS APPLIED			
TE TERMINAL	TE TERMINAL	TE TERMINAL	TE TERMINAL
2120770-1 <sup>3</sup>	2120686-1 <sup>4</sup>		

WIRE SIZE	CRIMP HEIGHT mm [INCH]	CRIMP HEIGHT REFERENCE SETTING
0.50mm2	1.06 +/- 0.05 [.042 +/- .002]	7.3
0.37mm2	0.99 +/- 0.05 [.039 +/- .002]	8.2
0.25mm2	0.93 +/- 0.05 [.037 +/- .002]	8.8
0.20mm2	0.91 +/- 0.05 [.036 +/- .002]	9.0

- <sup>1</sup> RECOMMENDED SPARE PARTS
- <sup>2</sup> GREASE BEARING SURFACES LIGHTLY
- 3. LUBRICATE DAILY PER THE APPLICATOR INSTRUCTION SHEET SUPPLIED WITH THE APPLICATOR.
- <sup>4</sup> APPLICATOR SPECIFIC DATA TO BE ENTERED INTO BLANK MEMORY CHIP AT ASSEMBLY. SEE BELOW FOR PART NUMBER:  
MECHANICAL FEED WITH "SMART APPLICATOR" CONVERSION: 8-2151924-4  
PNEUMATIC FEED WITH "SMART APPLICATOR" CONVERSION: 8-2151924-4  
SERVO FEED WITH "FINE CRIMP HEIGHT ADJUST": 8-2151924-5  
SERVO FEED WITH "NON-CRIMP HEIGHT ADJUST": 8-2151924-6
- 5. ADJUSTMENT OF THE STRIPPER MAY BE REQUIRED WHEN MOVING THE APPLICATOR BETWEEN BENCH AND LEADMAKER APPLICATIONS.
- <sup>6</sup> APPLY PART NUMBER 1-23419-5 LOCTITE TO THREADS OF ITEMS 62 & 242. FOR -6 ONLY APPLY PART NUMBER 1-23419-5 LOCTITE TO THREADS OF ITEMS 37 & 242.
- <sup>7</sup> GREASE THREADS, GROOVE AND O-RING ON ITEMS 35 & 252.
- <sup>8</sup> MAGNET, ITEM 166 MUST BE ORIENTED CORRECTLY IN ORDER TO PROPERLY ACTUATE THE COUNTER.
- <sup>9</sup> CRIMP HEIGHT REFERENCE SETTING WAS THE SETTING USED WHEN THE APPLICATOR WAS QUALIFIED AT THE FACTORY. ADJUSTMENT MAY BE NECESSARY WHEN RUNNING APPLICATOR IN THE FIELD.
- <sup>10</sup> SPARE FEED CAM STORAGE LOCATION REFER TO INSTRUCTION SHEET FOR ADDITIONAL INFORMATION.
- <sup>11</sup> TO CONVERT THE APPLICATOR TO A NON-CARRIER CUTTING STYLE, REMOVE ITEM 13 AND ATTACH TO THE LOCATION ON THE BACK SIDE OF THE HOUSING. REFER TO INSTRUCTION SHEET FOR ADDITIONAL INFORMATION.
- <sup>12</sup> WHEN ASSEMBLING A NON CRIMP HEIGHT ADJUST APPLICATOR (-6) USE SHIMS FROM ITEM 260 TO ACHIEVE A NOMINAL SHIM HEIGHT OF 4.74.
- <sup>13</sup> USE ITEM 34 WITH TERMINAL 2120770-1.
- <sup>14</sup> USE ITEM 272 WITH TERMINAL 2120686-1.
- <sup>15</sup> WIRE CRIMP INFORMATION OBTAINED FROM 114-18079. INSULATION CRIMP INFORMATION OBTAINED FROM 114-18050.

<sup>6</sup> THIS APPLICATOR IS SPECIFIC FOR USE IN A STRIPPER SEAL TERMINATING UNIT.

\*WARNING  
ON INSTALLATION, SET WIRE DISC, ITEM 40 TO LARGEST WIRE SIZE SETTING. USE OF SETTINGS BELOW MINIMUM REQUIRED CRIMP HEIGHT SETTING WILL CAUSE DAMAGE TO CRIMP TOOLING.

<sup>4</sup>	-	1	1	1	1	1	2-1752356-0	SUPPORT, TERMINAL		272			
	-	2	2	2	2	2	2168083-1	SCR, SKT HD CAP, RoHS, M3 X 8.0		269			
	-	1	1	1	1	1	1633782-2	FENCE		267			
	-	-	1	-	-	-	2119957-2	APPLICATOR SHIM PACK		260			
	-	1	-	1	1	1	8-21084-0	O-RING, .676 ID, .070 DIA. MAT.		252			
	-	-	-	-	-	-	2119640-1	PUSH ROD, AIR FEED		250			
	-	-	-	-	1	-	2079988-1	BUSHING, LCH5-12, MISUMI		249			
	-	-	-	-	1	-	2119641-1	FEED CAM, AIR FEED		248			
	-	1	-	1	1	1	2119798-1	DETENT PIN		247			
	-	1	-	1	1	1	1-22279-3	SPRING, COMPRESSION		246			
	-	-	1	-	-	-	2119758-1	RAM, AMP STYLE, SIDE FEED, NON-ADJ.		245			
	-	1	1	1	1	1	2119082-9	CAM, SNAIL, INSULATION ADJUSTMENT		244			
	-	1	1	1	1	1	2079764-1	WASHER, WAVE SPRING, CREST-TO-CREST		243			
<sup>6</sup>	-	1	1	1	1	1	2119083-1	RETAINER, INSULATION DIAL		242			
	-77	-7	-6	-5	-2	-1	PART NO	DESCRIPTION		ITEM NO			

ATLANTIC VERSION  
Shown on sheets 1 of 4 & 2 of 4  
(Pacific version shown on sheets 3 of 4 & 4 of 4)

SET UP GAUGE	LOC	DIST	REVISIONS					
2119599-1	A	66	P	LTN	DESCRIPTION	DATE	OWN	APVD
			A		RELEASED	10JUL2013	RK	TE
			A1		ECR-13-014437	13SEP2013	XZ	TE

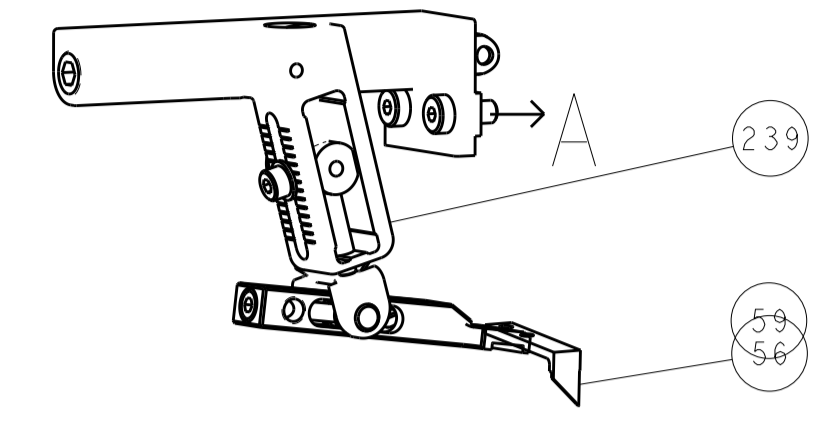
-	1	1	1	1	1	7-18023-7	SCR, SKT HD CAP M3 X 4.0		241	
-	-	2	2	-	-	2168400-6	SHCS, LOW HEAD, RoHS, M5 X 16		240	
-	-	-	-	-	1	2119580-1	MECHANICAL FEED ASSEMBLY		239	
-	-	-	-	-	1	2063440-1	AIR FEED MODULE		238	
-	-	1	1	-	-	2119740-2	TAG, IDENTIFICATION		213	
-	-	1	1	-	-	1901094-3	SPACER, FEEDER		198	
-	-	-	-	-	2	21045-3	RING, RETAIN, EXTERN, 3/16 CRESCENT		172	
-	1	1	1	1	1	994969-1	MAGNET, RARE EARTH HIGH ENERGY		166	
-	REF	REF	REF	REF	REF	994970-2	COUNTER, MAGNETIC		164	
-	-	-	-	-	1	240638-1	SPRING, FEED FINGER		163	
-	-	-	-	-	1	3-23627-7	PIN, RETAIN, GRVD, 3/16 X .854		137	
-	-	-	-	-	1	2119799-1	HOLDER, FEED FINGER, AF		136	
-	-	REF	REF	-	-	SEE NOTE 4	MEMORY CHIP, PROGRAMMED		135	
-	-	1	1	-	-	1633743-1	SERVO FEED LATCH ASM		133	
-	1	1	1	1	1	1-18028-2	WASHER, FLAT, REG M4		119	
-	-	REF	REF	-	-	2119944-1	FEED FINGER ASSEMBLY, SF		117	
-	1	1	1	1	1	1-690438-0	FRONT STRIP GUIDE		96	
-	2	2	2	2	2	2168083-1	SCR, SKT HD CAP, RoHS, M3 X 8.0		95	
-	1	1	1	1	1	455888-6	SPACER, CRIMPER		82	
-	2	2	2	2	2	18024-6	SCR, BTN SKT HD CAP (M4 X 8.0)		79	
-	1	1	1	1	1	1633470-3	EXTENSION PLATE		78	
-	1	1	1	1	1	2119956-1	DOCUMENTATION PACKAGE		71	
-	1	-	-	-	1	2119740-1	TAG, IDENTIFICATION		67	
-	2	2	2	2	2	2168078-1	SCREW, DRIVE, RH, RoHS, 2 x .188		66	
-	1	-	1	1	1	2119793-1	LIMITER, ADJUSTMENT BOLT		63	
<sup>6</sup>	-	3	-	3	3	992763-5	SCR, SET, SOC, CONE POINT, M3 X 4.0		62	
-	-	2	2	2	2	2-18032-5	SCR, SET, FLT POINT M5 X 20.0		61	
-	1	1	1	1	1	2079383-4	SCR, BHSC, RoHS (M4 X 8)		60	
						5-18022-5	SCR, HEX HD CAP, M4 X 6.0		59	
-	-	-	-	-	1	1338685-1	PAWL, FEED		56	
-	4	4	4	4	4	2168400-1	SHCS, LOW HEAD, RoHS, M4 X 12		54	
-	2	2	2	2	2	2168083-8	SCR, SKT HD CAP, RoHS, M4 X 16		53	
-	1	1	1	1	1	5018030-1	NUT, HEX, REG, RoHS, M3		52	
-	1	1	1	1	1	811242-5	BUMPER, HOLD DOWN		51	
-	1	1	1	1	1	690753-2	SPACER, TONKER		50	
-	-	-	-	-	1	2	18023-9	SCR, SKT HD CAP M4 X 6.0		49
-	-	-	-	-	-	1	2119652-1	FEED CAM, PRE FEED		48
-	-	-	-	-	-	1	2119653-1	FEED CAM, POST FEED		47
-	1	1	1	1	1	2-2119656-1	APPLICATOR BASIC ASSEMBLY, SF		46	
-	1	-	1	1	1	2119370-1	RAM, AMP STYLE, SIDE FEED		44	
-	1	1	1	1	1	2079383-7	SCR, BHSC, RoHS (M8 X 25)		41	
-	1	-	1	1	1	2119645-1	DISC, NUMBERED FA WIRE ADJUSTMENT		40	
-	1	-	1	1	1	2119957-1	APPLICATOR SHIM PACK		39	
-	1	1	1	1	1	2119644-1	RAM WASHER, PRECISION		38	
<sup>6</sup>	-	1	1	1	1	2119085-1	FA HEAD, ATLANTIC STYLE		37	
<sup>3</sup>	-	1	-	1	1	2119092-1	BOLT, ADJUSTMENT		35	
-	1	1	1	1	1	1-1752356-7	SUPPORT, TERMINAL		34	
-	2	2	2	2	2	2079383-8	SCR, BHSC, RoHS (M4 X 16)		33	
-	1	1	1	1	1	2161328-1	HEX HEAD, FLANGED, M5 X 8mm LONG		32	
-	1	1	1	1	1	1320908-9	SPACER, STRIP GUIDE		30	
-	1	1	1	1	1	2119959-3	ASSEMBLY, STRIP GUIDE		29	
-	1	1	1	1	1	1-455888-0	SPACER, CRIMPER		28	
-	2	2	2	2	2	22283-1	SPRING, COMPRESSION		27	
-	1	1	1	1	1	356835-1	LEVER, DRAG RELEASE		26	
-	1	1	1	1	1	240792-1	DRAG, TERMINAL		25	
-	1	1	1	1	1	1320928-4	STRIP GUIDE		24	
-	1	1	1	1	1	980371-4	SCR, SKT HD SHLDR 5.0 DIA X 6.0		23	
-	1	1	1	1	1	2168083-2	SCR, SKT HD CAP, RoHS, M4 X 8.0		21	
-	1	1	1	1	1	1-18028-2	WASHER, FLAT, REG M4		20	
-	1	1	1	1	1	2119533-1	STRIPPER, SIDE FEED		19	
-	1	1	1	1	1	2119806-1	INSERT, SHEAR		13	
-	1	1	1	1	1	3-22280-3	SPRING, COMPRESSION		12	
-	1	1	1	1	1	1-356885-4	STOP, SHEAR		11	
<sup>1</sup>	-	1	1	1	1	2119805-1	SHEAR HOLDER, FRONT		10	
<sup>1</sup>	-	1	1	1	1	454276-5	FLOATING SHEAR, FRONT		9	
<sup>1</sup>	1	1	1	1	1	1-1333202-0	ANVIL, COMBINATION		8	
-	1	1	1	1	1	240641-4	SPACER		7	
-	-	-	-	-	-	-	-		6	
-	1	1	1	1	1	2119757-4	DEPRESSOR, SHEAR		5	
-	1	1	1	1	1	238011-4	BLOCK, CRIMPER SPACER		4	
<sup>1</sup>	1	1	1	1	1	1633965-4	CRIMPER, INSULATION PREMIUM		3	
-	1	1	1	1	1	455888-4	SPACER, CRIMPER		2	
<sup>1</sup>	1	1	1	1	1	1-456403-3	CRIMPER, WIRE PREMIUM		1	
-77	-7	-6	-5	-2	-1	PART NO	DESCRIPTION		ITEM NO	

DIMENSIONS:		TOLERANCES UNLESS OTHERWISE SPECIFIED:		DWG		CHK		APVD		NAME	
mm	0 PLC ±0.5	1 PLC ±0.13	2 PLC ±0.013	3 PLC ±0.001	4 PLC ±0.0001	23APR2013	23APR2013	23APR2013	23APR2013	H. HUANG	L. ZHANG
MATERIAL:		FINISH:		WEIGHT:		SCALE:		SHEET:		REV:	
						1:2		1 OF 4		A1	

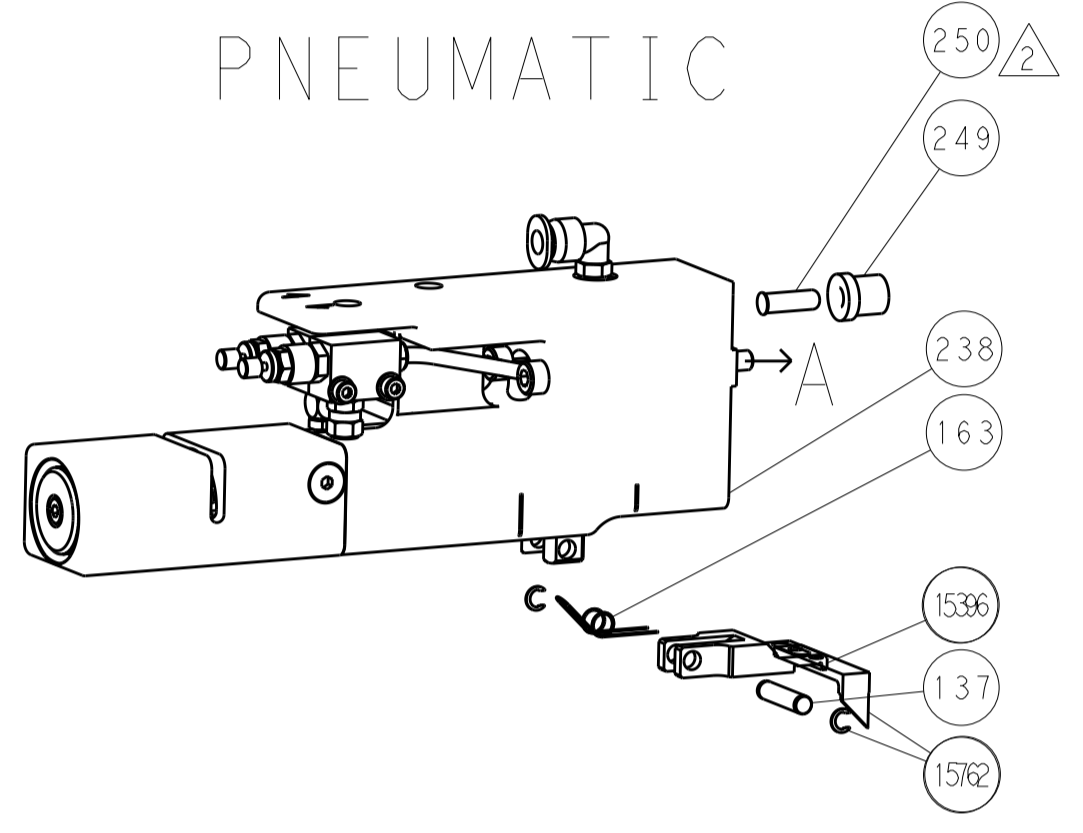
Customer Accessible Production Drawing

LOC		DIST		REVISIONS			
A	66	P	LTM	DESCRIPTION	DATE	OWN	APVD
		-		SEE SHEET 1			

### FEED TYPE MECHANICAL



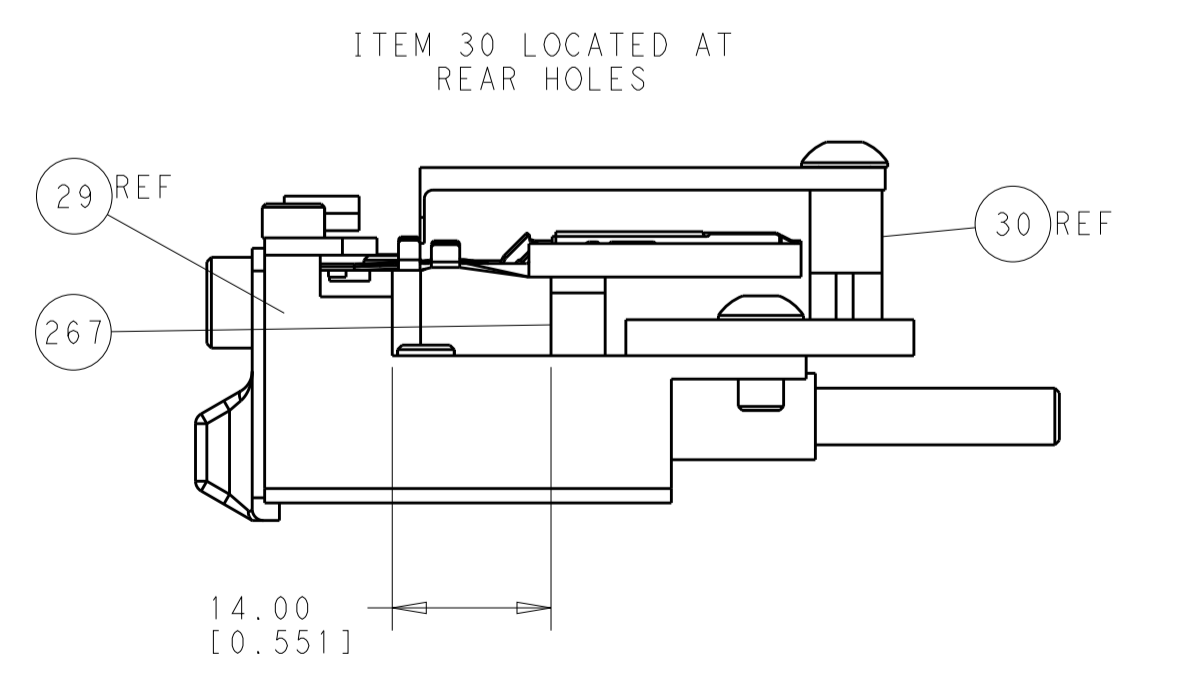
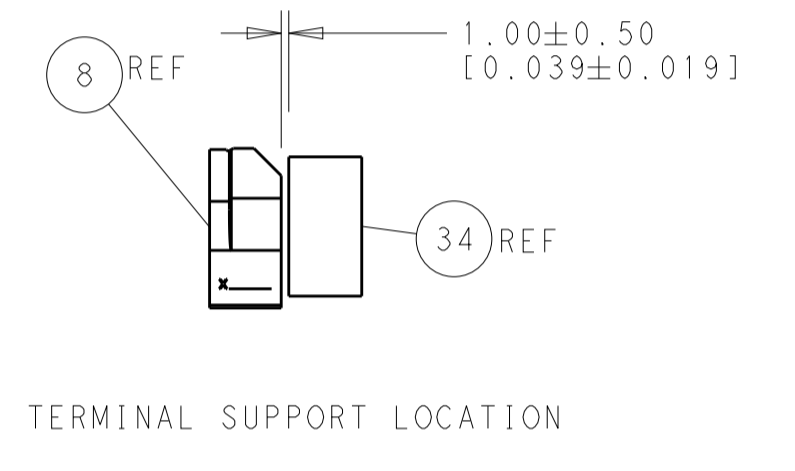
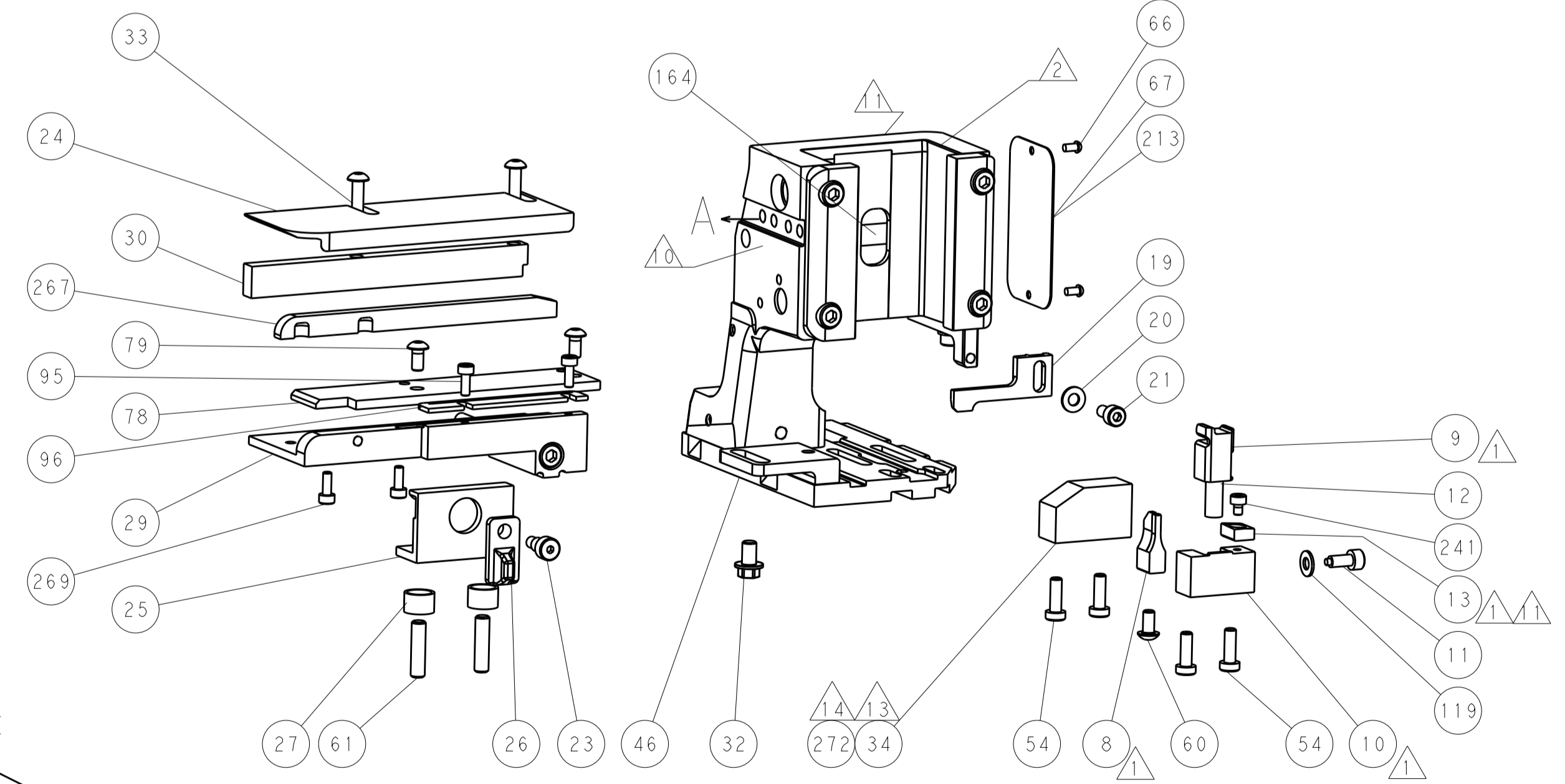
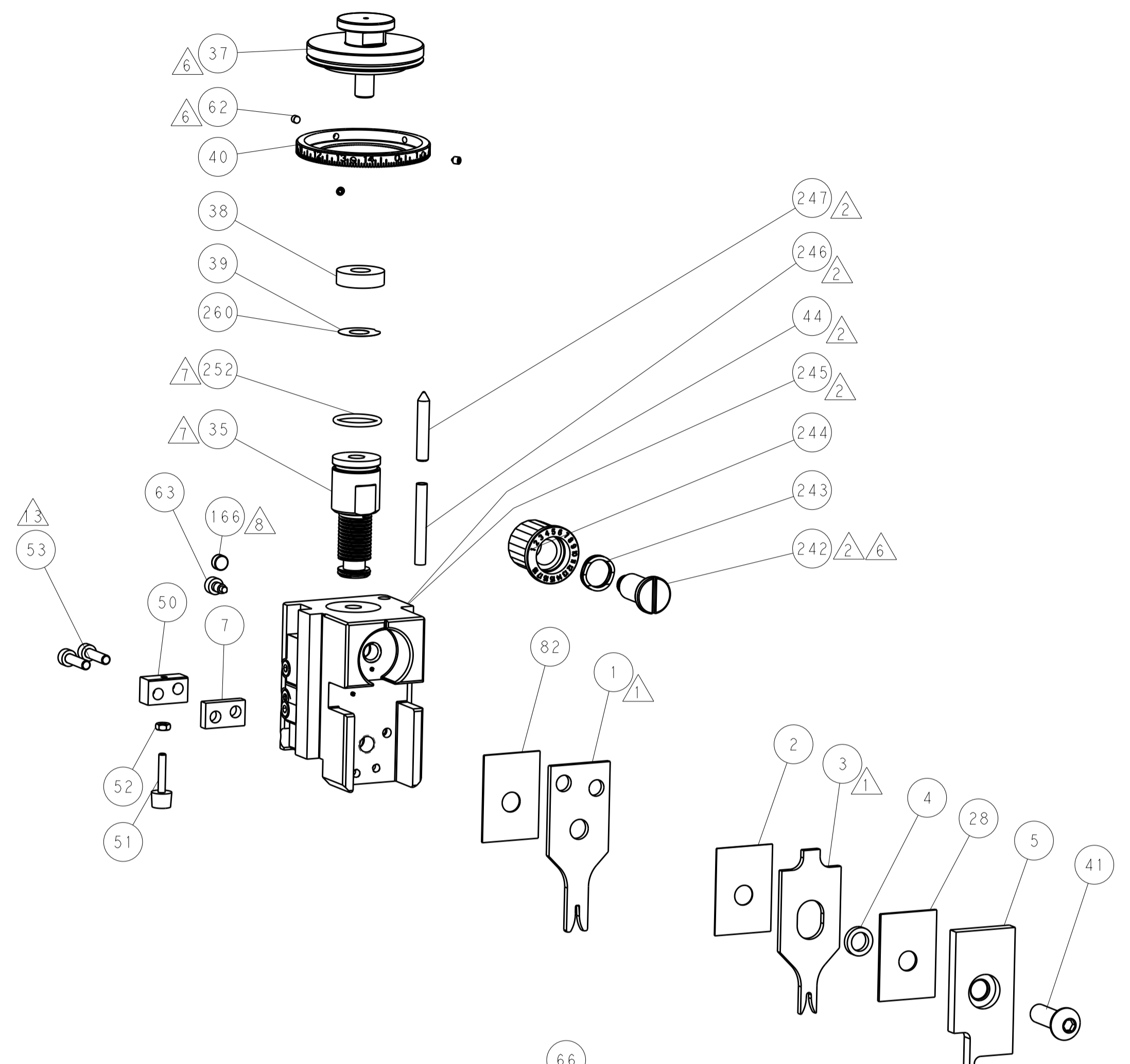
### PNEUMATIC



### SERVO LATCH PLATE



### CAM POSITIONS



**ATLANTIC VERSION**  
 Shown on sheets 1 of 4 & 2 of 4  
 (Pacific version shown on sheets 3 of 4 & 4 of 4)

DIMENSIONS:		TOLERANCES UNLESS OTHERWISE SPECIFIED:		DWN: R. HUANG 23APR2013		TE Connectivity	
mm	0 PLC ±0.5	1 PLC ±0.5	2 PLC ±0.13	3 PLC ±0.013	4 PLC ±0.0013	ANGLES ±0.0001	CHK: L. ZHANG 23APR2013
MATERIAL:				FINISH:		NAME: Ocean Side Feed Applicator	
WEIGHT:				SCALE: 1:2		SHEET 2 OF 4	
Customer Accessible Production Drawing				A1 00779 ©=2151924		REV: A1	

PACIFIC VERSION TERMINATOR INTERFACE ADAPTER	PART NUMBER	REVISION	DESCRIPTION	FEED TYPE	APPLICATOR STYLE CONVERSION CHART						
					CONVERT TO	PART NUMBERS REQUIRED					
	2-2151924-1	A	FINE CRIMP HEIGHT ADJUST	MECHANICAL	PNEUMATIC FEED	2119950-1	1338685-1	5-18022-5	2119641-2	2119799-1	2063440-1
					SERVO LATCH PLATE	2119951-1	-	8-2151924-5	1901094-3	2-1752354-0	2168400-6 (QUANTITY 2)
					SMART APPLICATOR	2161326-1	-	8-2151924-4	-	-	-
	2-2151924-2	A	FINE CRIMP HEIGHT ADJUST	PNEUMATIC	MECHANICAL FEED	2119949-1	1338685-1	5-18022-5	2119653-2	-	-
					SERVO LATCH PLATE	2119951-1	-	8-2151924-5	1901094-3	2-1752354-0	2168400-6 (QUANTITY 2)
					SMART APPLICATOR	2161326-1	-	8-2151924-4	-	-	-
	2-2151924-5	A	FINE CRIMP HEIGHT ADJUST	SERVO LATCH PLATE	MECHANICAL FEED	2119949-1	1338685-1	5-18022-5	2119653-2	-	-
					PNEUMATIC FEED	2119950-1	1338685-1	5-18022-5	2119641-2	2119799-1	2063440-1
	2-2151924-7	A	FINE CRIMP HEIGHT ADJUST	NONE	-	-	-	-	-	-	-
	7-2151924-7	A	CRIMP TOOLING KIT	-	-	-	-	-	-	-	-

APPLICATOR DATA		
CRIMP	SIZE	TYPE
WIRE	1.58 mm [.062]	F
INSUL	2.29 mm [.090]	O
APPLICATOR INSTRUCTIONS 408-10389		

TERMINAL DATA: TE TERMINAL		TE CRIMP SPECIFICATION	
TERMINAL NAME: EMAX SOCKET CONTACT F-CRIMP			
WIRE STRIP LENGTH		INSULATION DIAMETER RANGE	
3.40-4.00 mm [1.34-.157 IN]		Ø1.00-1.60 mm [1.039-.063 IN]	
TERMINAL APPLICATION SPECIFICATION	114-18079		
	114-18050		
TERMINALS APPLIED			
TE TERMINAL	TE TERMINAL	TE TERMINAL	TE TERMINAL
2120770-1	2120686-1		

WIRE SIZE	CRIMP HEIGHT mm [INCH]	CRIMP HEIGHT REFERENCE SETTING
0.50mm2	1.06 +/- 0.05 [1.042 +/- .002]	7.3
0.37mm2	0.99 +/- 0.05 [1.039 +/- .002]	8.2
0.25mm2	0.93 +/- 0.05 [1.037 +/- .002]	8.8
0.20mm2	0.91 +/- 0.05 [1.036 +/- .002]	9.0

- RECOMMENDED SPARE PARTS
- GREASE BEARING SURFACES LIGHTLY
- LUBRICATE DAILY PER THE APPLICATOR INSTRUCTION SHEET SUPPLIED WITH THE APPLICATOR.
- APPLICATOR SPECIFIC DATA TO BE ENTERED INTO BLANK MEMORY CHIP AT ASSEMBLY. SEE BELOW FOR PART NUMBER:  
 MECHANICAL FEED WITH "SMART APPLICATOR" CONVERSION: 8-2151924-4  
 PNEUMATIC FEED WITH "SMART APPLICATOR" CONVERSION: 8-2151924-4  
 SERVO FEED WITH "FINE CRIMP HEIGHT ADJUST": 8-2151924-5
- ADJUSTMENT OF THE STRIPPER MAY BE REQUIRED WHEN MOVING THE APPLICATOR BETWEEN BENCH AND LEADMAKER APPLICATIONS.
- APPLY PART NUMBER 1-23419-5 LOCTITE TO THREADS OF ITEMS 62 & 242.
- GREASE THREADS, GROOVE AND O-RING ON ITEMS 139 & 152.
- MAGNET MUST BE ORIENTED CORRECTLY IN ORDER TO PROPERLY ACTUATE THE COUNTER.
- CRIMP HEIGHT REFERENCE SETTING WAS THE SETTING USED WHEN THE APPLICATOR WAS QUALIFIED AT THE FACTORY. ADJUSTMENT MAY BE NECESSARY WHEN RUNNING APPLICATOR IN THE FIELD.
- SPARE FEED CAM STORAGE LOCATION REFER TO INSTRUCTION SHEET FOR ADDITIONAL INFORMATION.
- TO CONVERT THE APPLICATOR TO A NON-CARRIER CUTTING STYLE, REMOVE ITEM 13 AND ATTACH TO THE LOCATION ON BACK SIDE OF THE HOUSING. REFER TO INSTRUCTION SHEET FOR ADDITIONAL INFORMATION.
- USE ITEM 34 WITH TERMINAL 2120770-1.
- USE ITEM 272 WITH TERMINAL 2120686-1.
- WIRE CRIMP INFORMATION OBTAINED FROM 114-18079.  
 INSULATION CRIMP INFORMATION OBTAINED FROM 114-18050.

THIS APPLICATOR IS SPECIFIC FOR USE IN A STRIPPER SEAL TERMINAING UNIT.

**\*WARNING**  
 ON INSTALLATION, SET WIRE DISC, ITEM 40 TO LARGEST WIRE SIZE SETTING. USE OF SETTINGS BELOW MINIMUM REQUIRED CRIMP HEIGHT SETTING WILL CAUSE DAMAGE TO CRIMP TOOLING.

-1	1	1	1	1	2-1752356-0	SUPPORT, TERMINAL	272
-2	2	2	2	2	2168083-1	SCR, SKT HD CAP, RoHS, M3 X 8.0	269
-1	1	1	1	1	1633782-2	FENCE	267
-1	1	1	1	1	2119782-1	FINE ADJUST HEAD ASM, PACIFIC STYLE	251
-	-	-	-	-	2119640-1	PUSH ROD, AIR FEED	250
-	-	-	-	-	2079988-1	BUSHING, LCH5-12, MISUMI	249
-1	1	1	1	1	1-22279-3	SPRING, COMPRESSION	246
-1	1	1	1	1	2119082-9	CAM, SNAIL, INSULATION ADJUSTMENT	244
-1	1	1	1	1	2079764-1	WASHER, WAVE SPRING, CREST-TO-CREST	243
-1	1	1	1	1	2119083-1	RETAINER, INSULATION DIAL	242
-1	1	1	1	1	7-18023-7	SCR, SKT HD CAP M3 X 4.0	241
-	-	-	-	-	2168400-6	SHCS, LOW HEAD, RoHS, M5 X 16	240
-77	-27	-25	-22	-21	PART NO	DESCRIPTION	ITEM NO

**PACIFIC VERSION**  
 Shown on sheets 3 of 4 & 4 of 4  
 (Atlantic version shown on sheets 1 of 4 & 2 of 4)

SET UP GAUGE	LOC	DIST	REVISIONS					
2119599-1	A	66	P	LTN	DESCRIPTION	DATE	OWN	APVD
			-	-	SEE SHEET 1	-	-	-

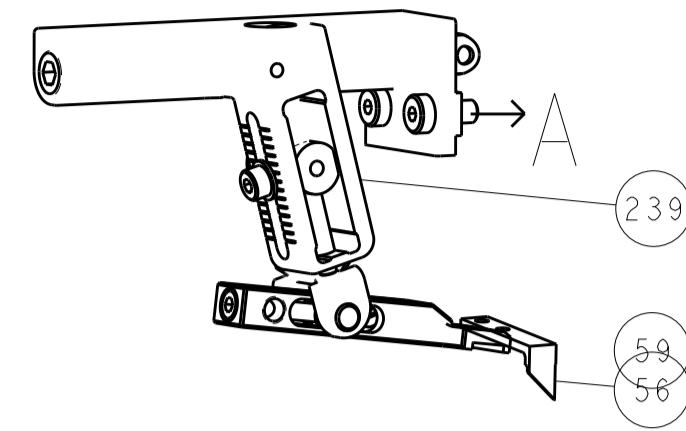
-	-	-	-	1	2119580-1	MECHANICAL FEED ASSEMBLY	239
-	-	-	1	-	2063440-1	AIR FEED MODULE	238
-	-	-	1	-	2119740-2	TAG, IDENTIFICATION	213
-	-	-	1	-	1901094-3	SPACER, FEEDER	198
-	-	-	2	-	21045-3	RING, RETAIN, EXTERN, 3/16 CRESCENT	172
-	1	1	1	1	994969-1	MAGNET, RARE EARTH HIGH ENERGY	166
-	REF	REF	REF	REF	994970-2	COUNTER, MAGNETIC	164
-	-	-	-	1	240638-1	SPRING, FEED FINGER	163
-	1	1	1	1	8-21084-1	O-RING, .801 ID, .070 DIA. MAT.	152
-	-	-	-	1	2119641-2	FEED CAM, AIR FEED	151
-	1	1	1	1	2119798-2	DETENT PIN	145
-	1	1	1	1	2079383-8	SCR, BHSC, RoHS (M4 X 16)	144
-	4	4	4	4	2168400-5	SHCS, LOW HEAD, RoHS, M4 X 20	143
-	-	-	-	1	2119653-2	FEED CAM, POST FEED	142
-	1	1	1	1	2-2119656-2	APPLICATOR BASIC ASSEMBLY, SF	141
-	1	1	1	1	2119650-1	RAM, ASIAN STYLE, SIDE FEED	140
-	1	1	1	1	2119092-2	BOLT, ADJUSTMENT	139
-	-	-	-	1	3-23627-7	PIN, RETAIN, GRVD, 3/16 X .854	137
-	-	-	-	1	2119799-1	HOLDER, FEED FINGER, AF	136
-	-	REF	-	-	SEE NOTE 4	MEMORY CHIP, PROGRAMMED	135
-	-	-	-	-	1633743-1	SERVO FEED LATCH ASM	133
-	1	1	1	1	1-18028-2	WASHER, FLAT, REG M4	119
-	-	REF	-	-	2119944-1	FEED FINGER ASSEMBLY, SF	117
-	1	1	1	1	1-690438-0	FRONT STRIP GUIDE	96
-	2	2	2	2	2168083-1	SCR, SKT HD CAP, RoHS, M3 X 8.0	95
-	1	1	1	1	455888-6	SPACER, CRIMPER	82
-	2	2	2	2	18024-6	SCR, BTN SKT HD CAP (M4 X 8.0)	79
-	1	1	1	1	1633470-3	EXTENSION PLATE	78
-	1	1	1	1	2119956-1	DOCUMENTATION PACKAGE	71
-	1	-	-	1	2119740-1	TAG, IDENTIFICATION	67
-	2	2	2	2	2168078-1	SCREW, DRIVE, RH, RoHS, 2 x .188	66
-	1	1	1	1	2119793-1	LIMITER, ADJUSTMENT BOLT	63
-	3	3	3	3	992763-5	SCR, SET, SOC, CONE POINT, M3 X 4.0	62
-	2	2	2	2	2-18032-5	SCR, SET, FLT POINT M5 X 20.0	61
-	-	-	-	-	5-18022-5	SCR, HEX HD CAP, M4 X 6.0	59
-	-	-	-	1	1338685-1	PAWL, FEED	56
-	2	2	2	2	2168083-8	SCR, SKT HD CAP, RoHS, M4 X 16	53
-	1	1	1	1	5018030-1	NUT, HEX, REG, RoHS, M3	52
-	1	1	1	1	811242-5	BUMPER, HOLD DOWN	51
-	1	1	1	1	690753-2	SPACER, TONKER	50
-	-	-	-	1	18023-9	SCR, SKT HD CAP M4 X 6.0	49
-	-	-	-	1	2119652-1	FEED CAM, PRE FEED	48
-	1	1	1	1	2079383-7	SCR, BHSC, RoHS (M8 X 25)	41
-	1	1	1	1	2119645-1	DISC, NUMBERED FA WIRE ADJUSTMENT	40
-	1	1	1	1	2119957-1	APPLICATOR SHIM PACK	39
-	1	1	1	1	2119644-1	RAM WASHER, PRECISION	38
-	1	1	1	1	1-1752356-7	SUPPORT, TERMINAL	34
-	2	2	2	2	2079383-8	SCR, BHSC, RoHS (M4 X 16)	33
-	1	1	1	1	2161328-1	HEX HEAD, FLANGED, M5 X 8mm LONG	32
-	1	1	1	1	1320908-9	SPACER, STRIP GUIDE	30
-	1	1	1	1	2119959-3	ASSEMBLY, STRIP GUIDE	29
-	1	1	1	1	1-455888-0	SPACER, CRIMPER	28
-	2	2	2	2	22283-1	SPRING, COMPRESSION	27
-	1	1	1	1	356835-1	LEVER, DRAG RELEASE	26
-	1	1	1	1	240792-1	DRAG, TERMINAL	25
-	1	1	1	1	1320928-4	STRIP GUIDE	24
-	1	1	1	1	980371-4	SCR, SKT HD SHLDR 5.0 DIA X 6.0	23
-	1	1	1	1	2168083-2	SCR, SKT HD CAP, RoHS, M4 X 8.0	21
-	1	1	1	1	1-18028-2	WASHER, FLAT, REG M4	20
-	1	1	1	1	2119533-1	STRIPPER, SIDE FEED	19
-	1	1	1	1	2119806-1	INSERT, SHEAR	13
-	1	1	1	1	3-22280-3	SPRING, COMPRESSION	12
-	1	1	1	1	1-356885-4	STOP, SHEAR	11
-	1	1	1	1	2119805-1	SHEAR HOLDER, FRONT	10
-	1	1	1	1	454276-5	FLOATING SHEAR, FRONT	9
1	1	1	1	1	1-1333202-0	ANVIL, COMBINATION	8
-	1	1	1	1	240641-4	SPACER	7
-	-	-	-	-	-	-	6
-	1	1	1	1	2119757-4	DEPRESSOR, SHEAR	5
-	1	1	1	1	238011-4	BLOCK, CRIMPER SPACER	4
1	1	1	1	1	1633965-4	CRIMPER, INSULATION O PREMIUM	3
-	1	1	1	1	455888-4	SPACER, CRIMPER	2
1	1	1	1	1	1-456403-3	CRIMPER, WIRE PREMIUM	1
-77	-27	-25	-22	-21	PART NO	DESCRIPTION	ITEM NO

DIMENSIONS:		TOLERANCES UNLESS OTHERWISE SPECIFIED:		DRAWN		CHK		APVD		NAME	
mm	0 PLC ±.5	1 PLC ±.5	2 PLC ±.5	3 PLC ±.5	4 PLC ±.5	5 PLC ±.5	6 PLC ±.5	7 PLC ±.5	8 PLC ±.5	9 PLC ±.5	10 PLC ±.5
	ANGLES ±.0001										
MATERIAL	FINISH	WEIGHT	SCALE	1:2	SHEET	3	OF	4	REV	A1	RESTRICTED TO

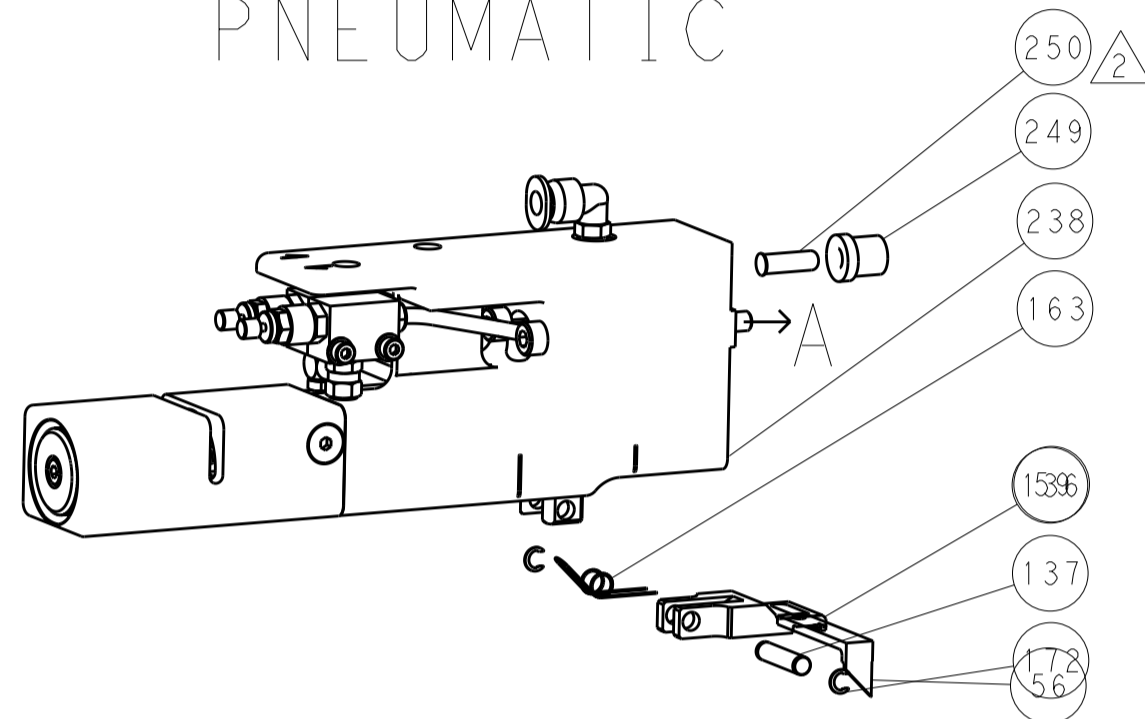
Customer Accessible Production Drawing

LOC		DIST		REVISIONS			
A	66	P	LTM	DESCRIPTION	DATE	DWN	APVD
		-		SEE SHEET 1			

# FEED TYPE MECHANICAL



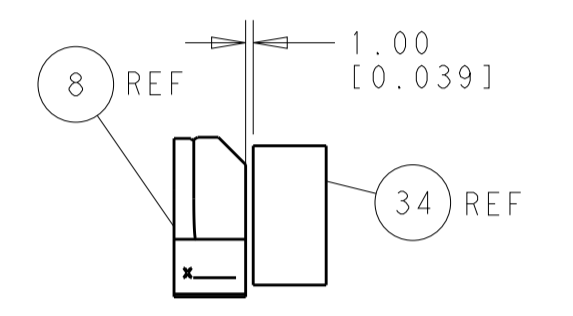
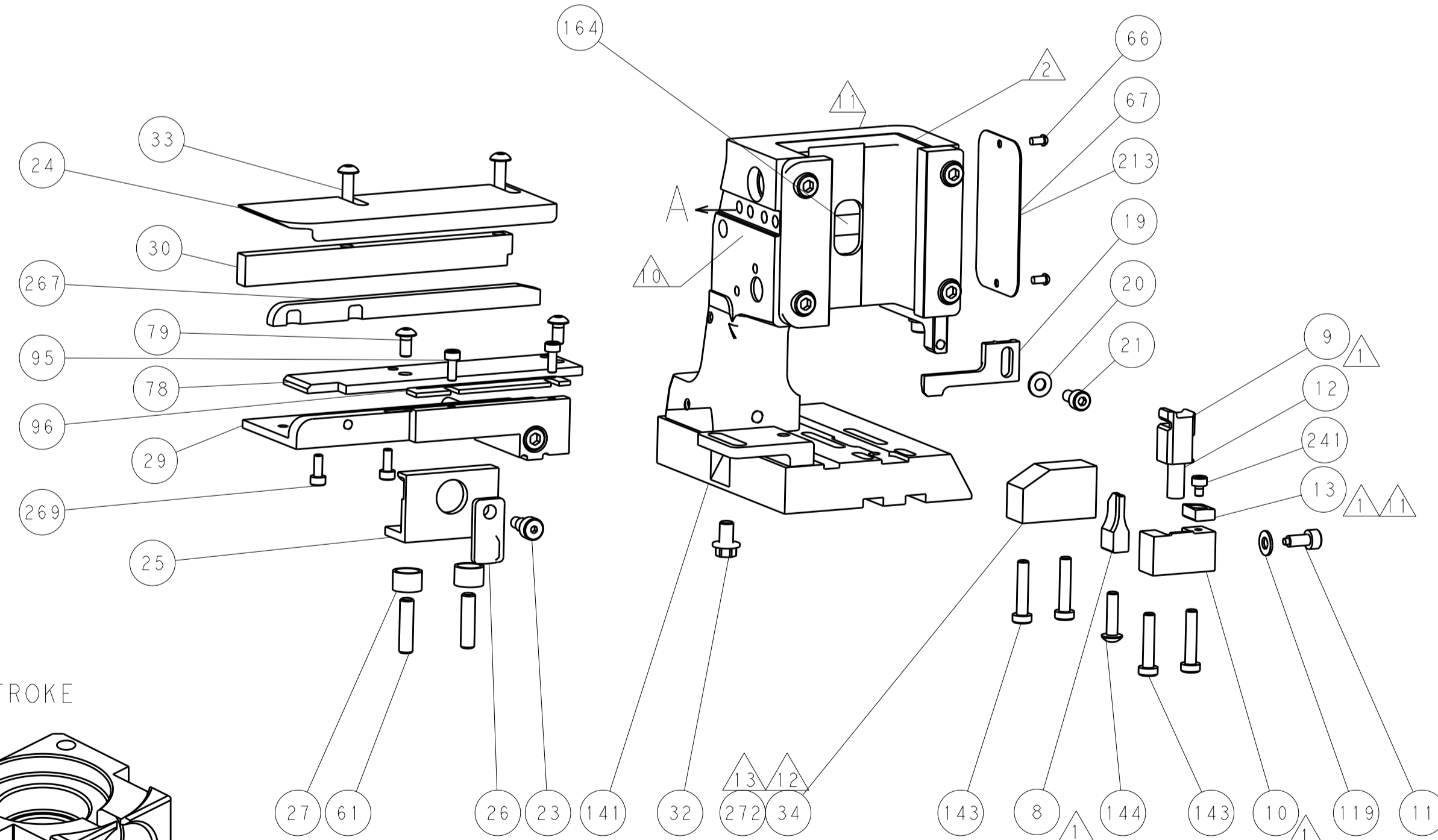
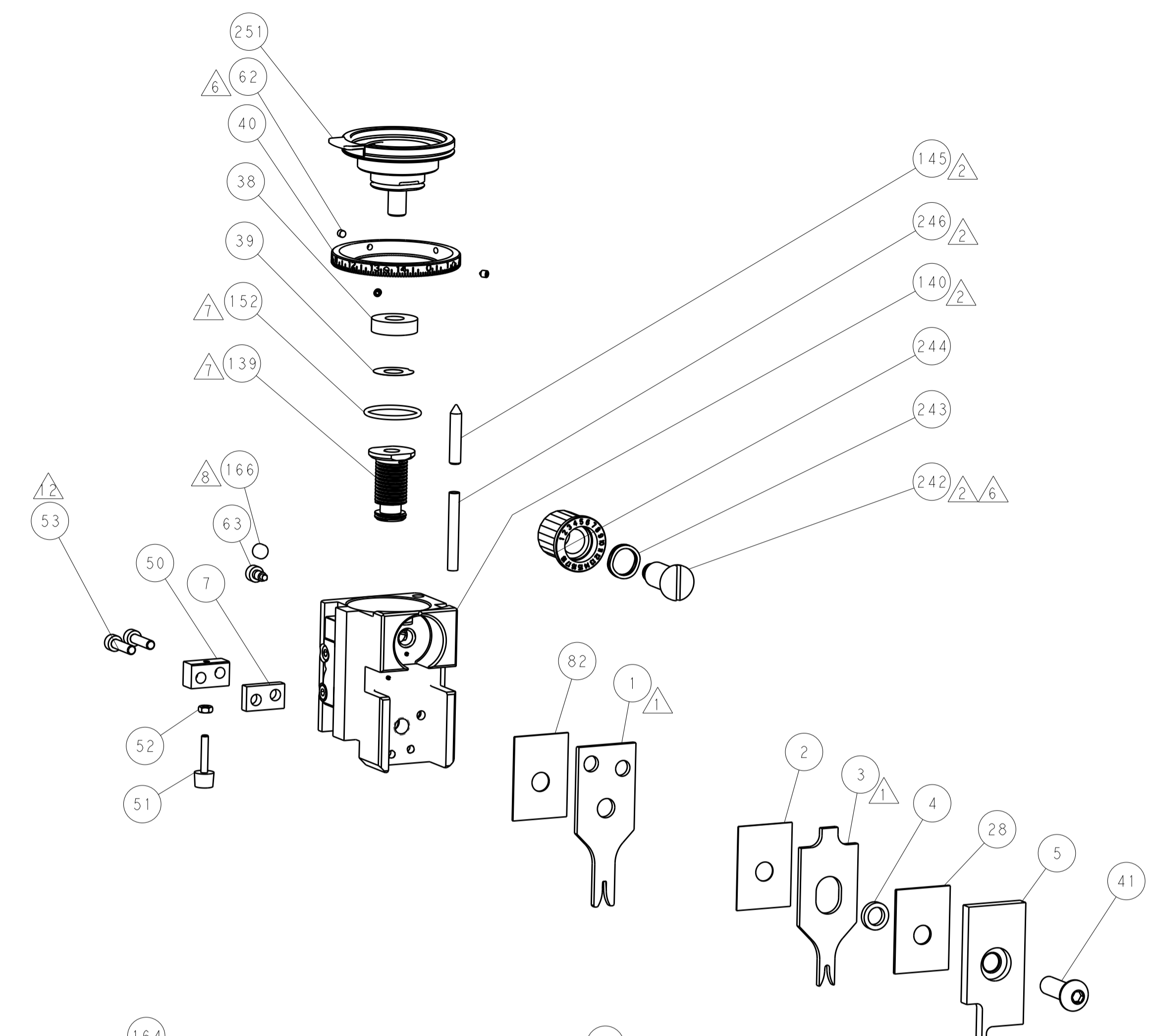
# PNEUMATIC



# SERVO LATCH PLATE

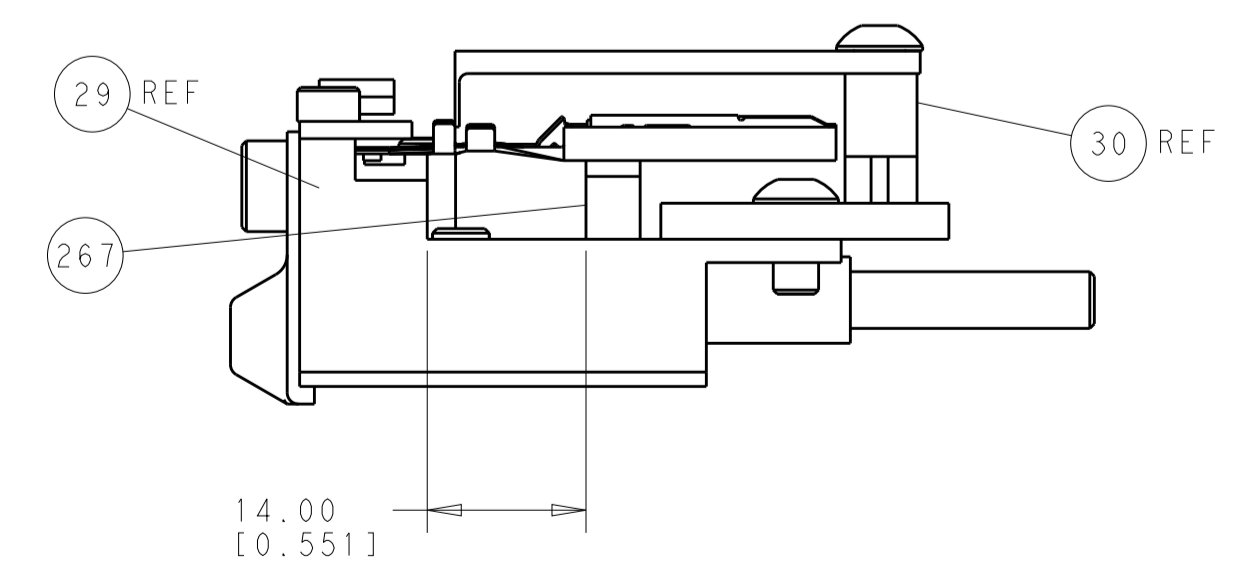


# CAM POSITIONS



TERMINAL SUPPORT LOCATION

ITEM 30 LOCATED AT REAR HOLES



**PACIFIC VERSION**  
 Shown on sheets 3 of 4 & 4 of 4  
 (Atlantic version shown on sheets 1 of 4 & 2 of 4)

DIMENSIONS:		TOLERANCES UNLESS OTHERWISE SPECIFIED:		DWG		NAME	
mm	0 PLC ±0.5	1 PLC ±0.5	2 PLC ±0.13	3 PLC ±0.013	4 PLC ±0.001	ANGLES ±	FINISH
MATERIAL				WEIGHT		SCALE	
-				-		1:2	

CHK: H. HUANG	23APR2013	TE Connectivity Harrisburg, PA 17105-3608
CHK: L. ZHANG	23APR2013	
APVD: H. GUO	23APR2013	Ocean Side Feed Applicator
Customer Accessible Production Drawing		SHEET 4 OF 4 REV A1