

REFERENCE SPECIFICATIONS

- MIL-DTL-24308
- IEC 352-5
- IEC-512 (TESTS PROCEDURE)

PHYSICAL CHARACTERISTICS

- INSULATOR MATERIAL:
- PBT COLOR BLACK-RAL 7001/STANDARD MATERIAL
- CONTACT MATERIAL: BRASS
- ACCESSORIES : BRASS

ELECTRICAL CHARACTERISTICS

- NOMINAL CURRENT: 2.5A
- CONTACT RESISTANCE : <10mΩ
- VOLTAGE PROOF : >750 V.r.m.s.
- RATED VOLTAGE : 300 V.r.m.s.
- INSULATION RESISTANCE: >5000MΩ
- CREEPAGE AND CLEARANCE DISTANCE: >1mm

MECHANICAL CHARACTERISTICS

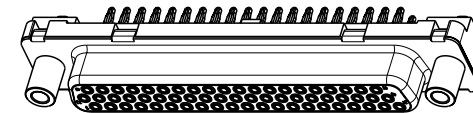
- RETENTION AGAINST TORQUE:
 - Threaded insert: 0.7 N.m minimum
 - Female screw lock: 0.5 N.m minimum
 - Insert L: threaded M3
 - Insert X: threaded UNC 4.40
 - Female screw V threaded UNC 4.40
- INSERTION AND WITH DRAWAL FORCE: <n x 3.40 N (n number of cts)
- GAUGE RETENTION FORCE : >0.20 N
- with gauge Ø0.99±0.005 / SURFACE ROUGHNESS:
 - Ra=0.10µ mini- 0.25µ maxi
- CONTACT RETENTION IN INSULATOR : mini I6N
- VIBRATIONS: 10-500Hz / 1.5 mm - 10g / 3 HRS/axis according with MIL std 1344 meth.2005 cond 2 interruption < 1µs

PERFORMANCE LEVELS

- INDUSTRIAL ATMOSPHERE TEST: 4 GASES available for contacts active area only
- BATELLE TEST :
 - Duration : 10 days
 - Mixed Gases: H2S=10 PPB±5 vol/vol +N2O=200ppb±50 vol/vol + CL2 =10ppb±3vol/vol + S2O=100ppb±30vol/vol

CD62S9 | C6GV00

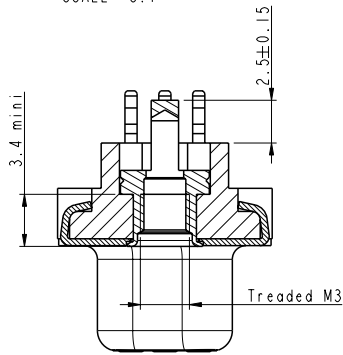
- Series
- Layout of contacts
- Contact definition:
 - S : socket
- Foot print 6.00
- Press-fit termination (machined contact)
- Plating definition :
 - 4 Standard class > 200 mating/unmating
 - 6 High performance class > 500 mating/unmating
- Front accessories definition : (see sheet 2)
 - GL : Harpoons + insert M3
 - GX : Harpoons + insert UNC 4-40
 - GV : Harpoons + female screw UNC 4-40
- Non RoHS compatible



Copyright FCJ

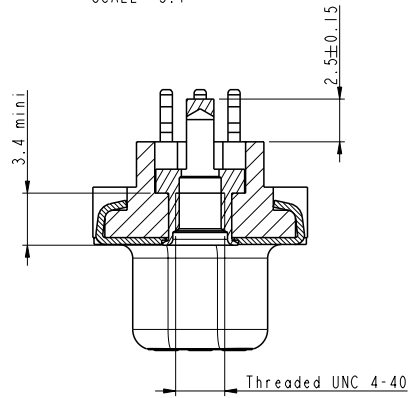
| | | | | | | | | |
|--------------------|-----------|------------|----------------|---------------------------------------|-----------------------------------|------------------|---------------|-------|
| www.fciconnect.com | | | | surface ISO 1302 ✓ | tolerance std ISO 406 ISO 1101 | projection mm | | |
| | | | | TOLERANCES UNLESS OTHERWISE SPECIFIED | | | | |
| Dr | P. CRON | 2006/10/11 | ANGULAR | 0.X | ±0.3 | size | A2 | Scale |
| Eng | M. PESSON | 2006/10/11 | LINEAR | 0.xx | ±0.1 | ECN | LS06-0160 | 2:1 |
| Chr | P. LEGARE | 2006/10/11 | 0° ±2° | 0.xxx | ±0.05 | | | |
| Appr | P. LEGARE | 2006/10/11 | Product family | D-SUB | | Spec ref | | |
| FCJ | | | | SOCKET COMPACT D 62 | | dag no | C01-8646-0689 | |
| | | | | WHITH STRAIGHT PRESS-FIT | | Rev. | C | |
| | | | | catalog no | sheet 1 of 3 | | | |

SECTION B-B
SCALE 5:1



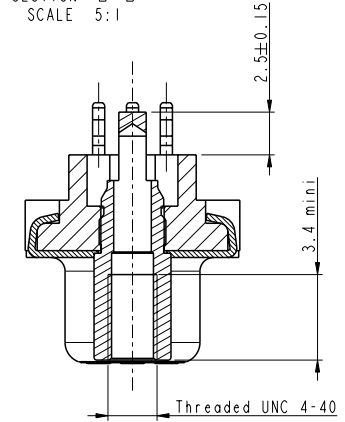
FRONT ACCESSORIES GL Insert M3

SECTION B-B
SCALE 5:1



FRONT ACCESSORIES GX Insert UNC 4-40

SECTION B-B
SCALE 5:1



FRONT ACCESSORIES GV Female screw UNC 4-40

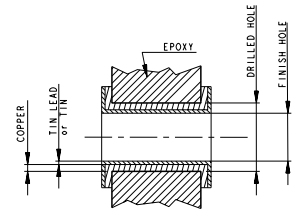
Tin lead version

| PART NUMBER | FRONT ACCESSORIES | PCB ACCESSORIES |
|---------------|-----------------------|----------------------------------|
| CD62S91C4GL00 | INSERT M3 | HAPOONS PCB to 1.6mm at 3.2mm |
| CD62S91C4GX00 | INSERT UNC 4-40 | HAPOONS PCB to 1.6mm at 3.2mm |
| CD62S91C4GV00 | FEMALE SCREW UNC 4-40 | HAPOONS PCB to 1.6mm at 3.2mm |
| CD62S91C6GL00 | INSERT M3 | HAPOONS PCB to 1.6mm at 3.2mm |
| CD62S91C6GX00 | INSERT UNC 4-40 | HAPOONS PCB to 1.6mm at 3.2mm |
| CD62S91C6GV00 | FEMALE SCREW UNC 4-40 | HAPOONS PCB to 1.6mm at 3.2mm |

| | | | | |
|-------------------------|------------|---------------------------------------|-----------------------------------|------------------|
| www.fciconnect.com | | surface ISO 1302 ✓ | tolerance std ISO 406 ISO 1101 | projection mm |
| | | TOLERANCES UNLESS OTHERWISE SPECIFIED | | |
| Dr P. CRON | 2006/10/11 | ANGULAR | 0.X ±0.3 | size A2 |
| Eng M. PESSON | 2006/10/11 | LINEAR | 0.XX ±0.1 | Scale 1:1 |
| Chr P. LEGARE | 2006/10/11 | 0° ±2° | 0.XXX ±0.05 | ECN LS06-0160 |
| Appr P. LEGARE | 2006/10/11 | Product family | D-SUB | Spec ref |
| FCI SOCKET COMPACT D 62 | | WHITH STRAIGHT PRESS-FIT | | Rev. C |
| catalog no | | C01-8646-0689 | | sheet 2 of 3 |

Copyright FCI. FCI

| METALLIZED HOLE DIMENSION | | HOLE PRESS-FIT CONTACT SnPb | HOLE PRESS-FIT CONTACT Sn | HOLE PRESS-FIT HARPOON SnPb | HOLE PRESS-FIT HARPOON Sn | HOLE PRESS-FIT CONTACT Cooper OSP | HOLE PRESS-FIT HARPOON Cooper OSP |
|-----------------------------------------|----------------------|-----------------------------|---------------------------|-----------------------------|---------------------------|-----------------------------------|-----------------------------------|
| P.C.B. HOLE DEFINITION (NOTE 1 et 2) | DRILL DIAMETER | ∅1.15 REF (NOTE-3) | ∅1.15 REF (NOTE-3) | ∅3.22 REF (NOTE-3) | ∅3.22 REF (NOTE-3) | ∅1.15 REF (NOTE-3) | ∅3.22 REF (NOTE-3) |
| | DRILLED HOLE | ∅1.12 - ∅1.18 | ∅1.12 - ∅1.18 | ∅3.19 - ∅3.25 | ∅3.19 - ∅3.25 | ∅1.12 - ∅1.18 | ∅3.19 - ∅3.25 |
| | COPPER PLATING | 25µ mini - 50µ maxi | 25µ mini - 50µ maxi | 25µ mini - 50µ maxi | 25µ mini - 50µ maxi | 25µ mini - 50µ maxi | 25µ mini - 50µ maxi |
| | TIN LEAD PLATING | 5µ mini - 15µ maxi | | 5µ mini - 15µ maxi | | | |
| | PUR TIN PLATED | | 0.8µ mini - 1.2µ maxi | | 0.8µ mini - 1.2µ maxi | | |
| | OSP PLATING (cooper) | | | | | 0.2µ mini - 0.5µ maxi | 0.2µ mini - 0.5µ maxi |
| | FINISH HOLE (note 4) | ∅0.94 - ∅1.09 | ∅1.00 - ∅1.09 | ∅3.02 - ∅3.20 | ∅3.08 - ∅3.20 | ∅1.01 - ∅1.09 | ∅3.09 - ∅3.20 |



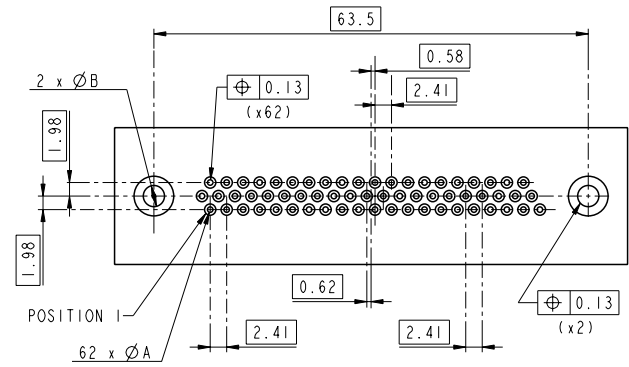
NOTE1: THESE DIMENSIONS MUST BE RESPECT TO SECURE PRESS-FIT PIN PERFORMANCES.

NOTE-2: ACCORDING TO IEC -352-5 SPEC.

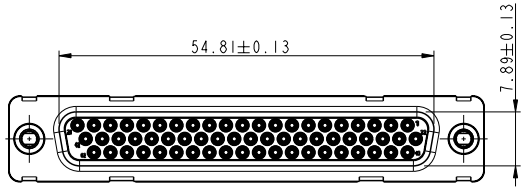
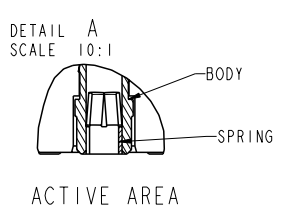
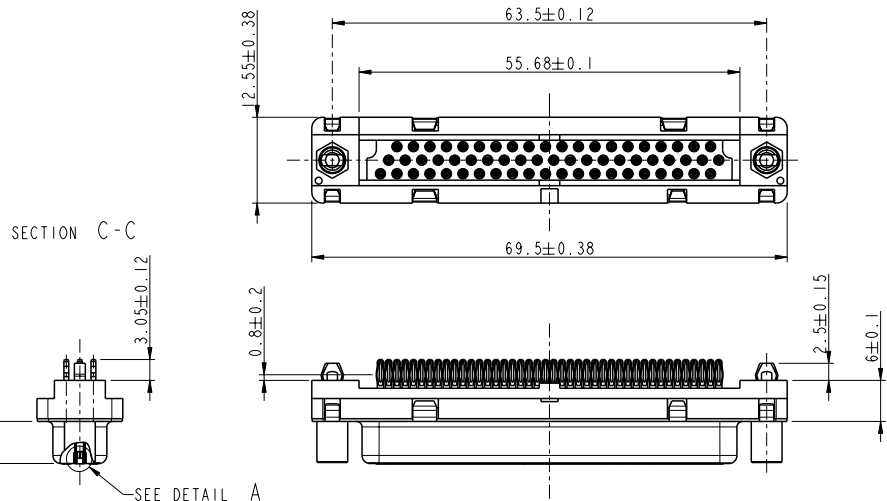
NOTE-3: MAJOR REQUIEREMENT FOR PRESS-FIT PIN PERFORMANCE

PLATING FOR TIN LEAD VERSIONS

- Contacts : gold over nickel on mating area tin lead over nickel on termination
- Shells bright pure tin over copper or zinc cr3
- Accessories with harpoon: bright pure tin over copper
- Other accessories: bright pure tin over copper or zinc cr3



PC card Drilling Dimensions (thickness 1.60 to 3.20 mm)



ACTIVE AREA

| | | | | | |
|-------------------------|------------|---------------------------------------|--------------------------------|----------------------|-----------|
| www.fciconnect.com | | surface ISO 1302 | tolerance std ISO 406 ISO 1101 | projection | mm |
| | | TOLERANCES UNLESS OTHERWISE SPECIFIED | | size A2 | Scale 1:1 |
| Dr P. CRON | 2006/10/11 | ANGULAR | 0.X ±0.3 | ECN | LS06-0160 |
| Eng M. PESSON | 2006/10/11 | LINEAR | 0.XX ±0.1 | Product family | D-SUB |
| Chr P. LEGARE | 2006/10/11 | 0° ±2° | 0.XXX ±0.05 | Spec ref | |
| Appr P. LEGARE | 2006/10/11 | Product family | | D-SUB | |
| FCJ SOCKET COMPACT D 62 | | WHITH STRAIGHT PRESS-FIT | | deg no C01-8646-0689 | Rev. C |
| catalog no | | | | sheet 3 of 3 | |

Copyright FCJ