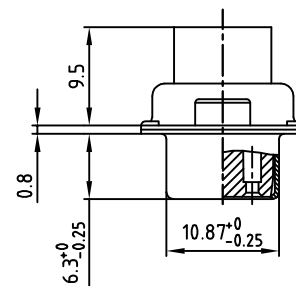
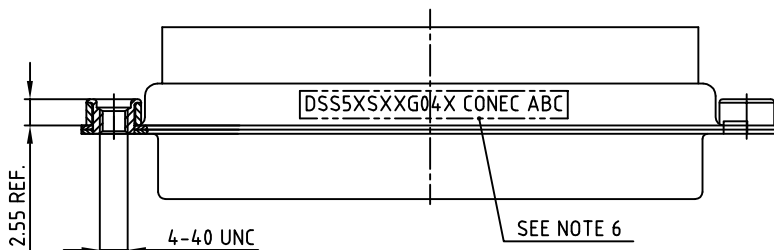
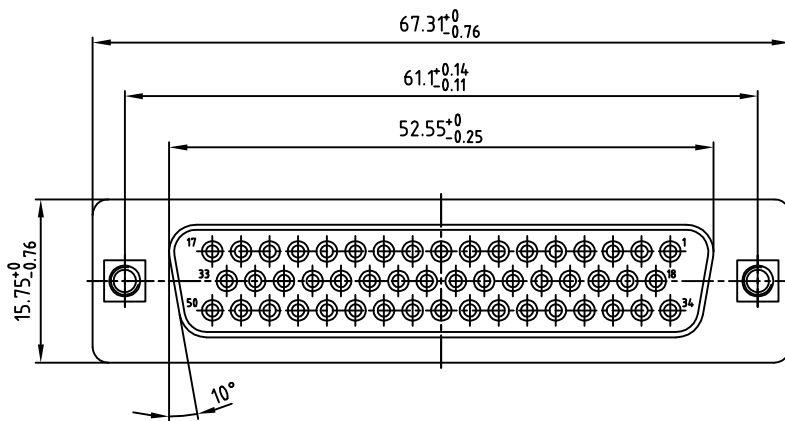


used for: D-SUB



NOTES:

1. METALSHELLS: STEEL; min. 315µm TIN over 40-80µm NICKEL
2. INSULATORS: PBT GF UL 94 V-0, BLACK
3. THREADED INSERTS: COPPER ALLOY; min. 200µm TIN over 80µm NICKEL
4. COLLARS: COPPER ALLOY; min. 200µm TIN over 80µm NICKEL
5. CONNECTOR WILL BE SUPPLIED WITHOUT CONTACTS
6. CONNECTOR IS PART MARKED: **DSS5XSXXG04X CONEC ABC**

Directive 2002/95/EC RoHS compliant

THIS DRAWING MAY NOT BE COPIED OR REPRODUCED IN ANY WAY, AND MAY NOT BE PASSED ON TO A THIRD PARTY, WITHOUT WRITTEN PERMISSION. OWNERSHIP AND COPYRIGHT OF CONEC GmbH DO NOT ALTER CAD DRAWING BY HAND	tolerance		dim. in mm	scale: 2:1
				material: SEE NOTES
	2011	date	name	title: D-SUB FEMALE 50pos. CRIMP STYLE with threaded insert
	drawn	14.10.	Henneboel	
	appd.	14.10.	Fischer	
	norm			
		d-old	dwg no:	
a	Original		16K1A2880	DIN-A 3 sh: 1/1
rev.	description	date	name	part no: DSS5XSXXG04X

