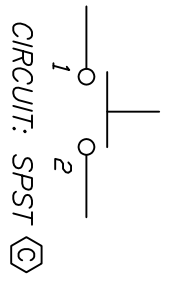
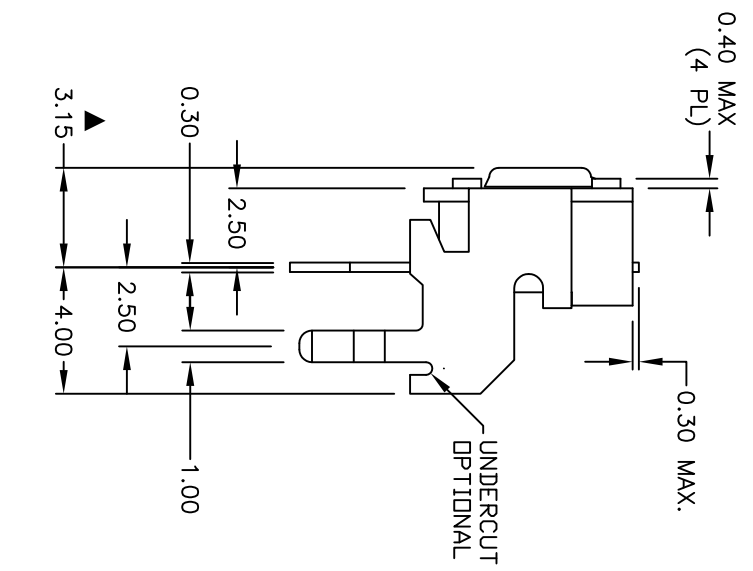
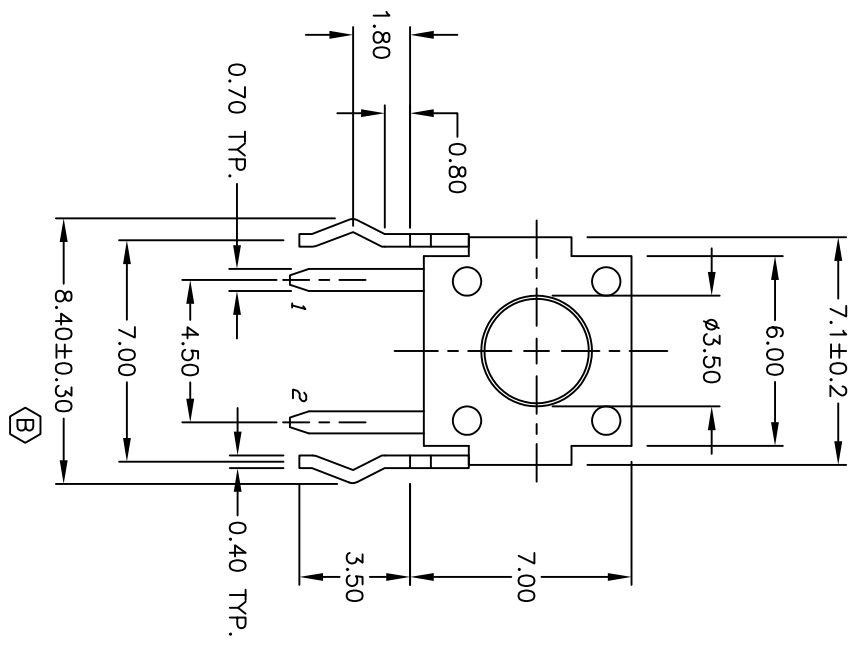


RECOMMENDED P.C.B. LAYOUT



NOTES:

1. ALL DIMENSIONS IN MM
2. GENERAL TOLERANCE: X.X=±0.4
X.XX=±0.25
3. TERM. NOS. FOR REF. ONLY
4. RATING: 50mA, @12V DC
5. TRAVEL: 0.25±0.1mm
6. OPERATING FORCE: 100±50gf
7. CONTACT RESISTANCE: 100 milliohms Max.
8. ELECTRICAL LIFE: 100,000 CYCLES MIN.
9. ▲ DESIGNATE MAJOR FEATURE
10. ACTUATOR COLOR: DARK GRAY
11. HOUSING COLOR: BLACK



C	20192	CORRECT NOTE & CIRCUIT	09/30/11	BMA
B	19502	CHANGED TOLERANCE	12/08/10	BGL
A	12370	RELEASED	12/10/02	CJB
REV.	ECN NO.	DESCRIPTION	DATE	CHKD

THE INFORMATION CONTAINED IN THIS DOCUMENT IS PROPRIETARY TO E-SWITCH AND IS NOT TO BE COPIED OR TRANSMITTED				
E-SWITCH®				
TL 1105W F100 Q				
SCALE	4:1	DATE	12/10/02	DR
				CJB
				DWG
				P021221
REV				C