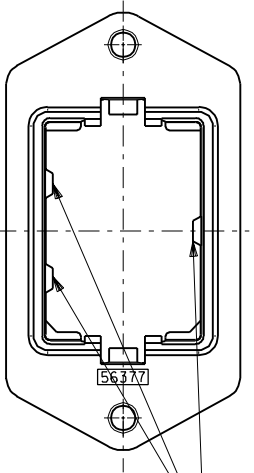
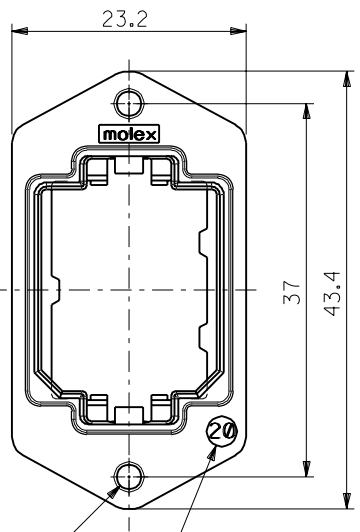
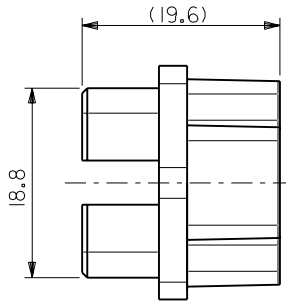
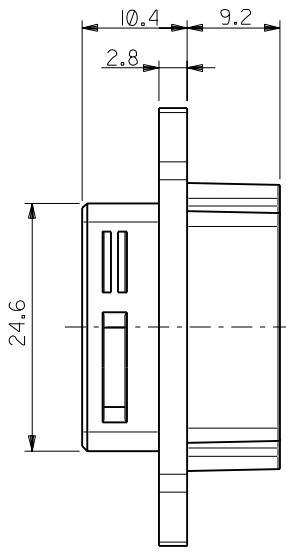


DWG. NO.
SD-56377-008

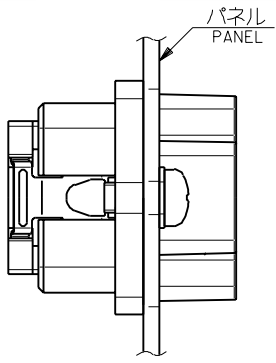


ハウジング挿入方向キー
POLARIZATIONS KEY FOR HOUSING

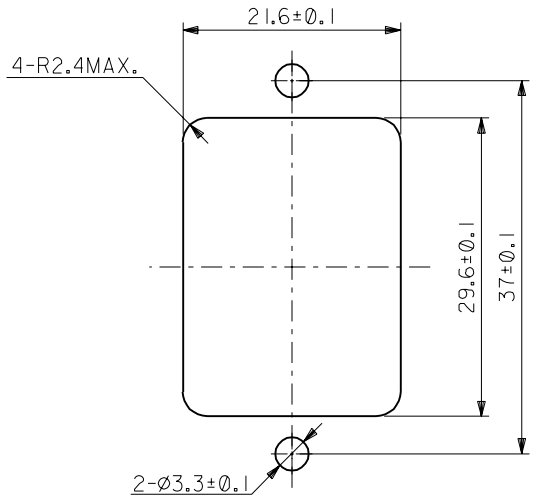


2-M3x0.5

SIZE IDENTIFICATION



パネル後面取り付け
REAR MOUNT TYPE



推奨パネル切り取り寸法 (後面取り付け)
RECOMMENDED PANEL OPENING (REAR MOUNTING)

注記
NOTES

1. 材質
MATERIAL
亜鉛合金, ニッケルメッキ
ZINC ALLOY, Ni PLATING
2. 適用ハウジングアッセンブリ: 51233-201* (PIN HS'G ASS'Y)
51238-201* (SOCKET HS'G ASS'Y)
APPLICABLE HOUSING ASS'Y: 51233-201* (PIN HS'G ASS'Y)
51238-201* (SOCKET HS'G ASS'Y)
3. 推奨ねじ締め付けトルク: 5~6 kgf・cm
RECOMMENDED SCREW TIGHTENING TORQUE: 5~6 kgf・cm

56377-2001	56377-****
------------	------------

MATERIAL.NO	MODEL.NO
-------------	----------

DIMENSIONS:		SHT	REV
<input type="checkbox"/> mm	<input type="checkbox"/> INCH	<input checked="" type="checkbox"/> mm	<input type="checkbox"/> ONLY
		REVISE ON CAD ONLY	

EC NO. DRWN: CHK: APPR:	EC NO. DRWN: CHK: APPR:	EC NO. DRWN: CHK: APPR:	REVISED 01/10/17 EC NO. J2002-0932 DRWN: S.AKIYAMA CHK: J.MIYAZAWA APPR: Y.O.IITO	RELEASED 01/02/09 EC NO. JD2001-1040 DRWN: S.AKIYAMA CHK: J.MIYAZAWA APPR: H.IKESUGI	DESCRIPTION
			A	0	

MATERIAL 材料	注記参照 SEE NOTES
FINISH 仕上げ	#
WIRE RANGE 適用配線範囲	#
INS. RANGE 被覆外径	#

GENERAL TOLERANCES: (UNLESS SPECIFIED) 一般公差	SCALE 2-1	DESIGN UNITS <input checked="" type="checkbox"/> mm <input type="checkbox"/> INCH	THIRD ANGLE PROJECTION <input checked="" type="checkbox"/> <input type="checkbox"/>
10 UNDER 未満	±0.2	DRAWN BY & DATE S. Akiyama / 01/17/25	
10 OVER 以上 30 UNDER 未満	±0.25	CHECKED BY & DATE J. Miyazawa / Y. Ito	
30 OVER 以上	±0.3	APPROVED BY & DATE H. Ikessugi / Y. Ito	
ANGLE 角度	±3°	CAD FILE NAME 56377008.S01	

TITLE: COMPACT ROBOT CONN. (CRC) RECEPTACLE SHELL		
MOLEX INCORPORATED		
MATERIAL NO. SEE CHART	DRAWING NO. SD-56377-008	SHEET NO. 1 OF 1
THIS DRAWING CONTAINS INFORMATION THAT IS PROPRIETARY TO MOLEX INCORPORATED AND SHOULD NOT BE USED WITHOUT WRITTEN PERMISSION.		

DO NOT SCALE DRAWING