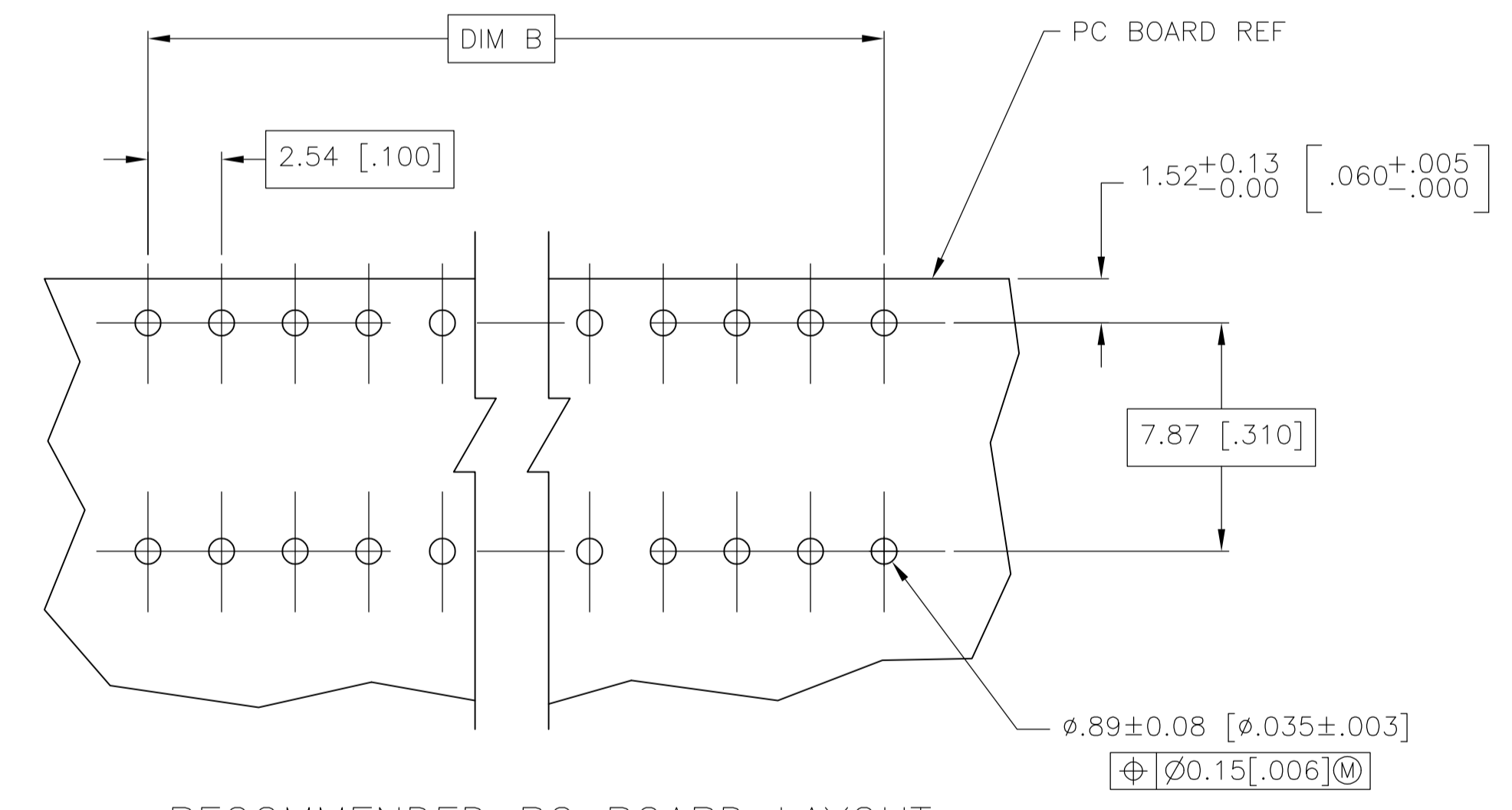
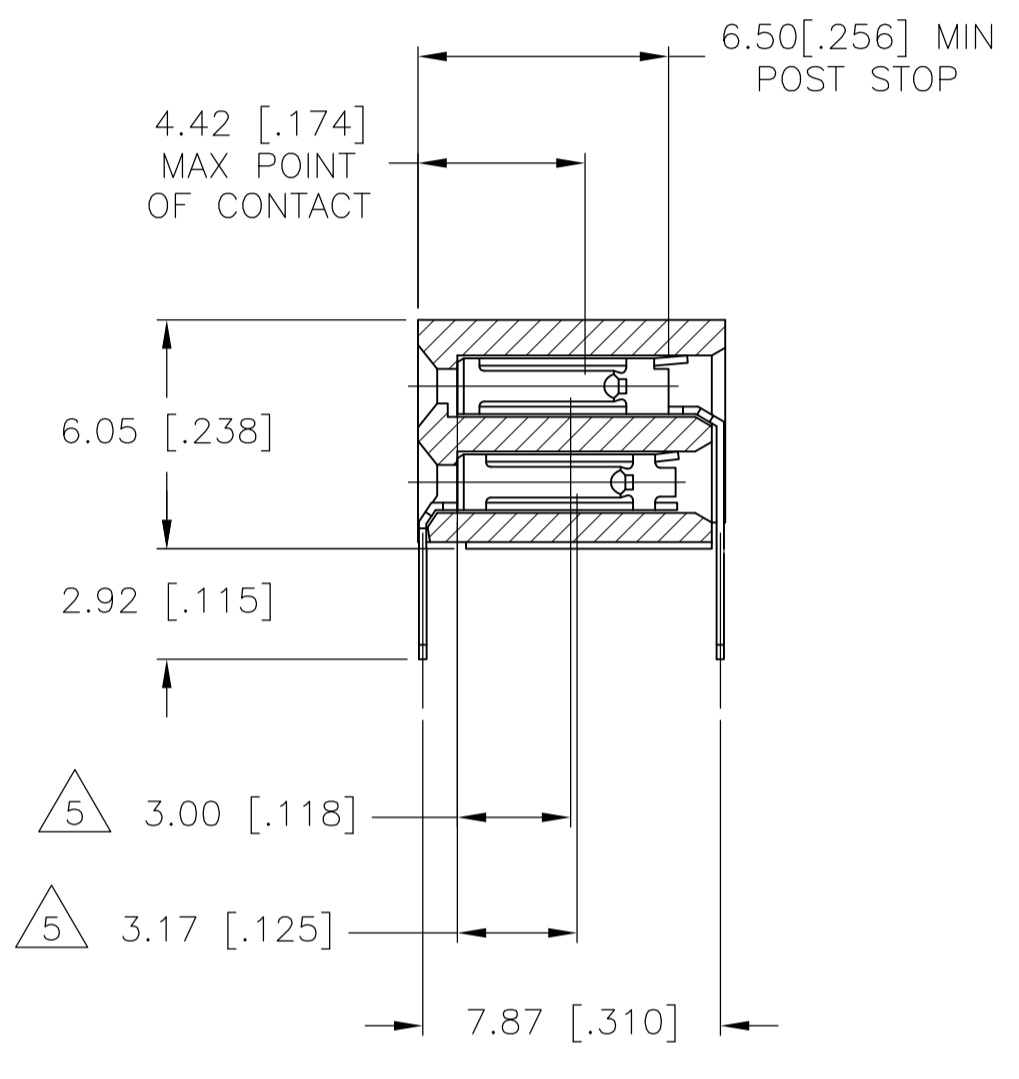
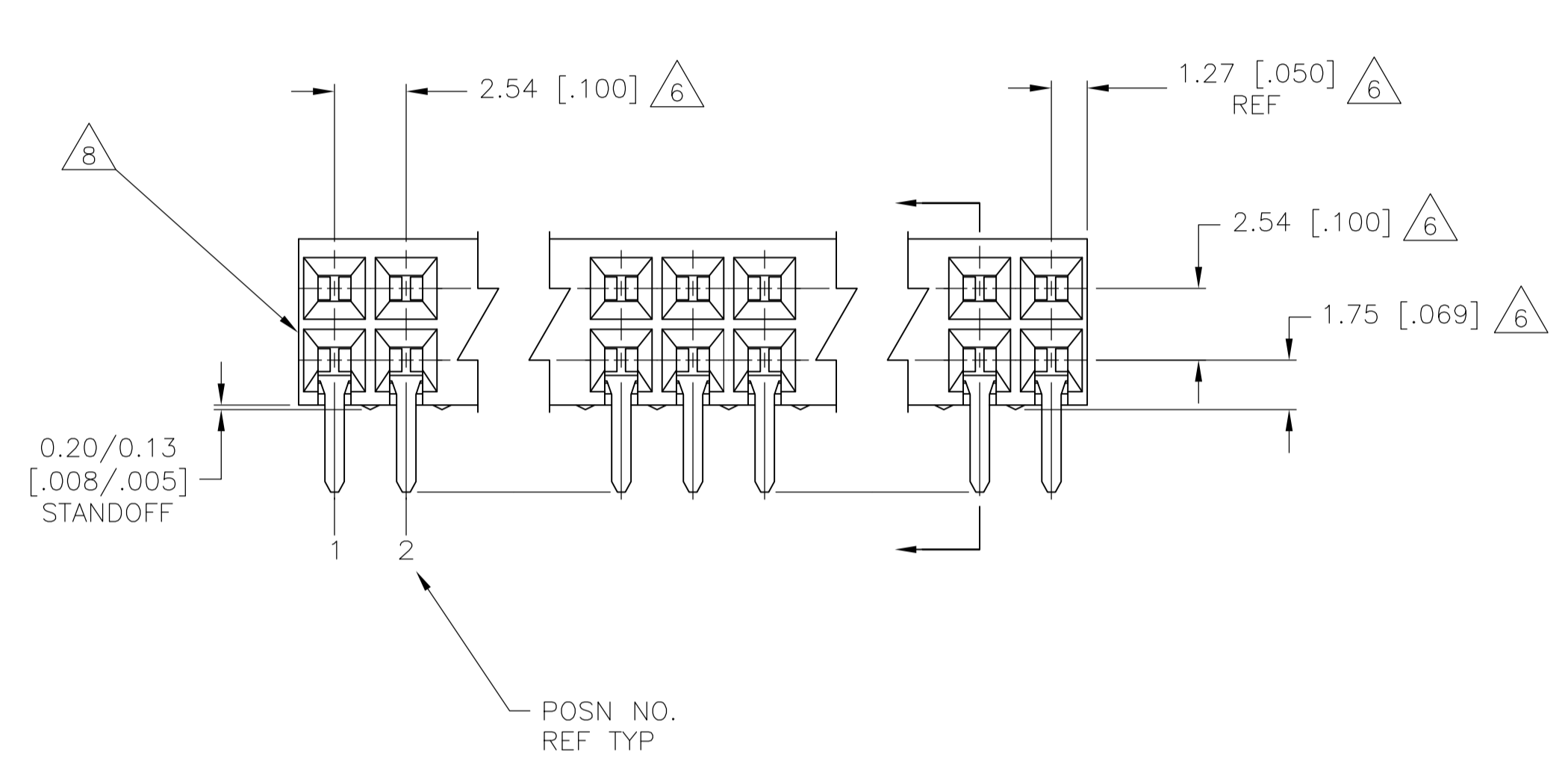
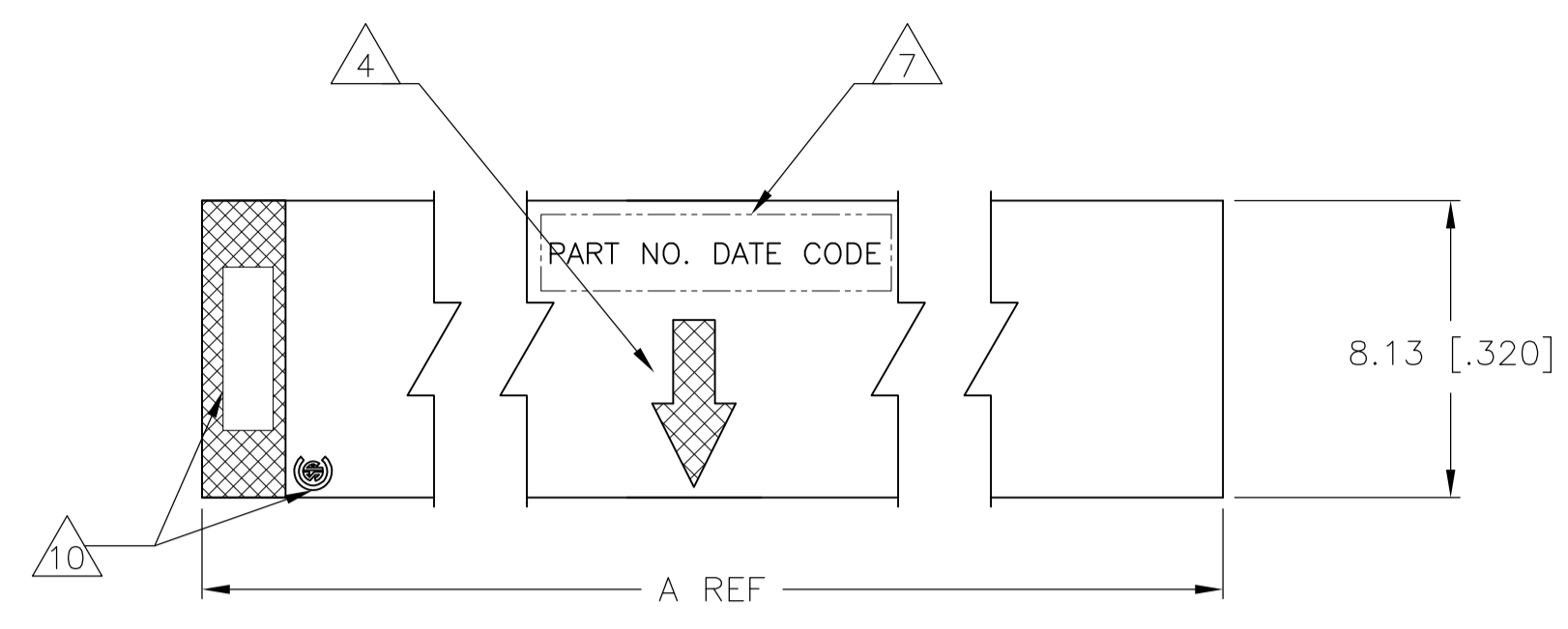


LOC		DIST		REVISIONS			
AD	00	F	LTR	DESCRIPTION	DATE	DMN	APVO
		Y4	REVISED	PER ECO-13-005565	29MAR13	KH	JO



RECOMMENDED PC BOARD LAYOUT

- 1 HOUSING MATERIAL: GLASS FILLED POLYESTER, COLOR- BLACK
- 2 CONTACT MATERIAL: PHOSPHOR BRONZE
- 3 CONTACT FINISH: 0.00254-0.00508[.000100-.000200] THK BRIGHT TIN-LEAD, ALL OVER 0.00127[.000050] NICKEL, ENTIRE CONTACT
- 4 MOLDED IN ARROW DESIGNATES THE MATING FACE OF THE CONNECTOR
- 5 POINT OF MEASUREMENT FOR PLATING THICKNESS OF CONTACT AREA
- 6 DIMENSIONS PERTAIN TO HOUSING CAVITY CENTERLINES
- 7 MARK PART NUMBER AND DATE CODE IN APPROXIMATE LOCATION SHOWN, EITHER END.
- 8 ALTERNATE LOCATION FOR DATE CODE FOR 4 AND 6 POSITION.
- 9 NO PART NUMBER MARKING REQUIRED FOR THIS PART.
- 10 TE LOGO AND CSA LOGO ARE MOLDED INTO HOUSING, THIS LOCATION.

NO.	POSN	DESCRIPTION	DATE	DMN	APVO
4					
6					
8					
10					
12					
14					
16					
18					
20					
22					
24					
26					
28					
30					
32					
34					
36					
38					
40					
42					
44					
46					
48					
50					
52					
54					
56					
58					
60					
62					
64					
66					
68					
70					
72					
74					
76					
78					
80					
82					
84					
86					
88					
90					
92					
94					
96					
98					
100					
102					
104					
106					
108					
110					
112					
114					
116					
118					
120					
122					
124					
126					
128					
130					
B		A		NO. OF POSN	ASSEMBLY PART NUMBER

THIS DRAWING IS A CONTROLLED DOCUMENT.

DR: R BROWN 03JUN02  
 CR: J OLSON 03JUN02  
 APVO: J OLSON 03JUN02

NAME: AMPMODU MOD II RECEPTACLE ASSEMBLY, HORIZONTAL, .100 CL, 2 ROW, CLOSED-ENTRY, SHORT POINT OF CONTACT, END-TO-END STACKABLE

PRODUCT SPEC: APPLICATION SPEC

SIZE: A1  
 CASE CODE: 00779  
 DRAWING NO: 102084

WEIGHT: --  
 CUSTOMER DRAWING

SCALE: 5:1  
 SHEET: 1 OF 1  
 REV: Y4

STE TE Connectivity