



FEATURES

- Vandal-proof protection of switching element by mechanical end stop of metal actuator
- Functional principle protected by utility model
- Long lifetime due to high mechanical load capacity
- Pleasant tactile feedback
- Wide range of possible designs

Type		Metallic Panel PCB	Metallic Panel flex	Metallic Trackball
Electrical Data				
Switching Voltage min.	[VDC]	20	20	
Switching Voltage max.	[VDC]	30 / 42	30 / 42	
Operating Voltage of Interface	[VDC]			5
Switching Current min.	[mA]	0.1	1	
Switching Current max.	[mA]	100	50	12
Lifetime electrical	[mill.]	2	1	2
Rated Breaking Capacity	[W]	1	0.6	
Insulation Resistance	[MΩ]	> 100	> 100	
Dielectric Strength	[V]	500	500	
Duration of Bounce	[ms]	< 5	< 5	
Mechanical Data				
Actuating Force	[N]	3	3	
Actuating Travel	[mm]	0.45	0.45	
Lifetime mechanical	[mill.]	2	2	2
IK Protection Class (Shock Protection)	[IK]	IK 07	IK 07	
Climatical Data				
Operating Temperature	[°C]	-25 to +85	-25 to +85	-10 to +55
Storage Temperature	[°C]	-40 to +85	-40 to +85	-20 to +80
IP Protection Class Front Side	[IP]	IP 40	IP 40	IP 65 static
IP Protection Class Contact Area	[IP]	IP 65	IP 65	
Other Data				
Lettering		Laser Lettered	Laser Lettered	

KEYPADS WITH STROKE

In addition to the standard types, additional versions as well as laser lettering are available on request. Starting with catalogue page 36 you will find an overview of the various designs.



Trackball Unit



12 key keypad



16 key keypad

Characteristics

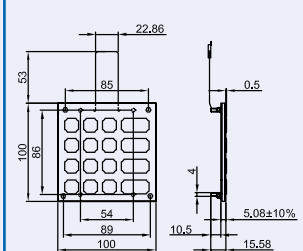
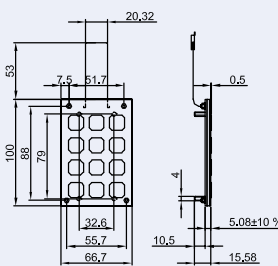
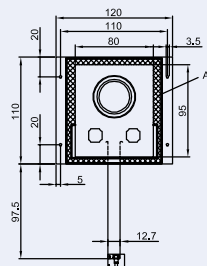
Mounting Dimensions [mm]	80.5 x 95.5	67.2 x 100.5	100.5 x 100.5
Type Metallic Panel	Metallic Trackball	Metallic Panel flex	Metallic Panel flex
Mounting Style	Rear Mounting	Front Mounting	Front Mounting
Material Front Panel, Keys	Stainless Steel	Stainless Steel	Stainless Steel
Material Contacts		Silver + Carbon	Silver + Carbon
Trackball / Touchpad	Ball Diameter 38 mm, Colour black, IP 65		
Terminal	Mini DIN for PS/2 Interface or JST Connector	AMP Jack Contacts R-2.54 mm	AMP Jack Contacts R-2.54 mm
Lettering	Standard Lettering / Customized Lettering on request		

Order Number

Interface / Lettering			
PS/2	1041.5000.500		
USB	1041.5000.501		
Numeric Keypad		1041.3500	
German			1041.3000
English			1041.3100

Drawing

A Mounting Frame
B Trackball
C Touchpad



KEYPADS WITH STROKE