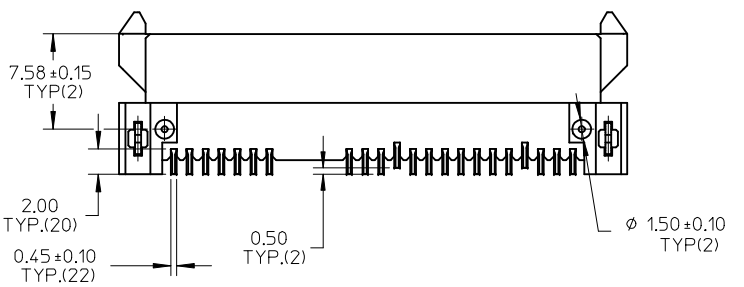


Detail1



NOTES:

1.MATERIAL:

HOUSING: LCP, GLASS FILLED, UL94V-0. COLOR: BLACK;
 FORKLOCK: COPPER ALLOY;
 TERMINALS: COPPER ALLOY.

2.TERMINAL PLATING:

CONTACT AREA:

(a) GOLD FLASH(0.025 MICRONS MINIMUM);
 (b) GOLD, THICKNESS=0.76 MICRONS MINIMUM;
 (c) GOLD, THICKNESS=0.38 MICRONS MINIMUM;
 SOLDER AREA: TIN, THICKNESS=2.00 MICRONS MINIMUM;
 UNDER PLATE: NICKEL, THICKNESS=1.27 MICRONS MINIMUM.

3.FORLOCK PLATING:

SOLDER AREA: TIN, THICKNESS=2.00 MICRONS MINIMUM;
 UNDER PLATING: NICKEL, THICKNESS=1.27 MICRONS MINIMUM.

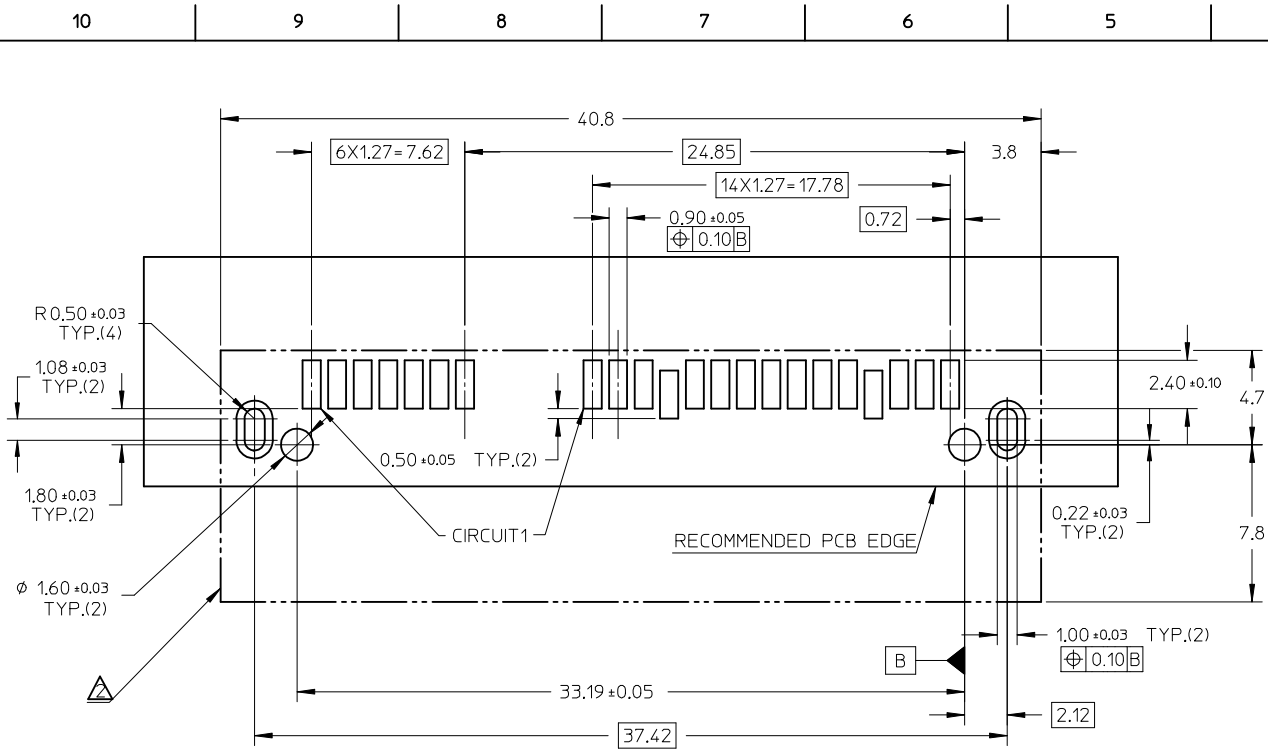
4.PRODUCT SPECIFICATION: PS-67492-001.

5.PACKAGING METHOD: 47018-400*, TAPE REEL, DETAIL REFER TO PK-47018-003,
 47018-210*, TAPE REEL, DETAIL REFER TO PK-47018-001;
 OTHERS, TRAY, DETAIL REFER TO PK-67492-001.

6.MATING PARTS: 87703/87672.

7.PRODUCT COMPLIANT TO RoSH DIRECTIVE 2002/95/EC AND 2000/53/EC.

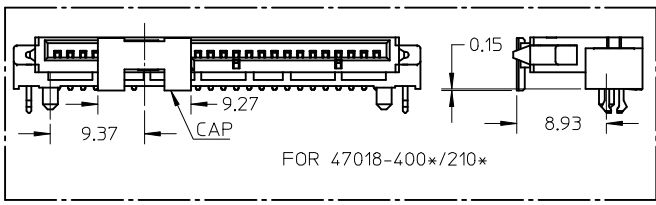
REVISED EC NO: SH2016-0027 DRW:GLLI CHKD: APPR:AYIN REV	DESCRIPTION 2015/12/08 2016/01/18	QUALITY SYMBOLS	GENERAL TOLERANCES (UNLESS SPECIFIED)		DIMENSION STYLE	SCALE	DESIGN UNITS	THIRD ANGLE PROJECTION	
		$F_A=0$	mm	INCH	MM ONLY	2:1	METRIC		
		$F_C=0$	4 PLACES ± --- ± ---	DRAWN BY	DATE	TITLE			
		$F_B=0$	3 PLACES ± --- ± ---	GLLI	2011/12/12	SERIAL ATA DOCKING CONNECTOR TOP MOUNT TYPE			
		ANGULAR ± 3 °	2 PLACES ± 0.25 ± ---	CHECKED BY	DATE	MOLEX INCORPORATED			
			1 PLACE ± 0.25 ± ---	APPROVED BY	DATE	SD-47018-001			
				XJSONG	2011/12/12	1 OF 2			
				MATERIAL NO.		DOCUMENT NO.			
				SEE SHEET 2		THIS DRAWING CONTAINS INFORMATION THAT IS PROPRIETARY TO MOLEX INCORPORATED AND SHOULD NOT BE USED WITHOUT WRITTEN PERMISSION			



RECOMMENDED P.C.B LAYOUT (COMPONENT SIDE)

NOTES:

1. RECOMMENDED P.C.B THICKNESS: 1.60+/-0.05.
- △ CONNECTOR PROFILE, ALL THE TRACE SHOULD BE AVOIDED THIS AREA.



PRODUCT	CONTACT PLATING SPEC	DIM'A'	DIM'B'	DIM'C'	DIM'D'	PACKAGE	REMARK
47018-2100	NOTES 2 (A) OF SHEET 1						PURE TIN
47018-2101	NOTES 2 (B) OF SHEET 1	2.55	4.30	9.65	3.65	TAPE REEL	(LIGHT TIN)
47018-2102	NOTES 2 (C) OF SHEET 1						WITH CAP
47018-4000	NOTES 2 (A) OF SHEET 1						PURE TIN
47018-4001	NOTES 2 (B) OF SHEET 1	3.40	5.15	10.50	4.50	TAPE REEL	(LIGHT TIN)
47018-4002	NOTES 2 (C) OF SHEET 1						WITH CAP
47018-2010	NOTES 2 (A) OF SHEET 1						PURE TIN
47018-2011	NOTES 2 (B) OF SHEET 1	2.55	4.30	9.65	3.65	TRAY	(MATTE TIN)
47018-2012	NOTES 2 (C) OF SHEET 1						
47018-2000	NOTES 2 (A) OF SHEET 1						PURE TIN
47018-2001	NOTES 2 (B) OF SHEET 1	2.55	4.30	9.65	3.65	TRAY	(LIGHT TIN)
47018-2002	NOTES 2 (C) OF SHEET 1						

REVISED EC NO: SH2016-0027 DRW: GLL1 CHKD: APPR: AYIN 2015/12/08 2016/01/18	QUALITY SYMBOLS $\nabla = 0$ $\nabla = 0$ $\nabla = 0$	GENERAL TOLERANCES (UNLESS SPECIFIED)		DIMENSION STYLE MM ONLY		SCALE 1:1	DESIGN UNITS METRIC	THIRD ANGLE PROJECTION	
		4 PLACES ± --- ± --- 3 PLACES ± --- ± --- 2 PLACES ± 0.25 ± --- 1 PLACE ± 0.25 ± ---	mm INCH	DRAWN BY GLL1	DATE 2011/12/12	TITLE SERIAL ATA DOCKING CONNECTOR TOP MOUNT TYPE			
		ANGULAR ± 3°	DRAFT WHERE APPLICABLE MUST REMAIN WITHIN DIMENSIONS	APPROVED BY XJSONG	DATE 2011/12/12	MOLEX INCORPORATED			
				MATERIAL NO. SEE TABLE	DOCUMENT NO. SD-47018-001	SHEET NO. 2 OF 2			